

NO. Z-1542

"B" to "E"

Desc. At the Southeast corner of Walnut and 1st Street

By George W. Blackmon, Jr. et al by Charles Sutherland

DOA	BODY	ACTION
<u>7-12-73</u>	<u>MAPC</u>	<u>denied</u>
<u>7-31-73</u>	<u>B.C.C.</u>	<u>denied</u>

file discarded 2-9-82

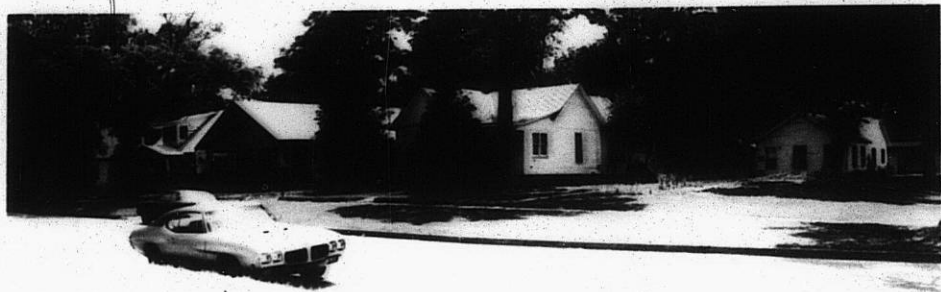
Resolution No. \_\_\_\_\_ Published \_\_\_\_\_ (T9-201)

2-1542

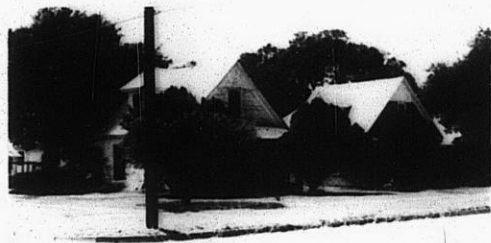
319

319

2-1542



1.



2.



3.



4.

349

34x