

NO. Z-1568

"A" to "RB" (5545)

Desc. At the Southeast corner of Ellis and Skinner

By Opal F. Williams by Martha R. Hodges

DOA                      BODY                      ACTION

9-27-73

MAPC

Appvd. subj. to submission of

11-13-73

BCC

Appvd.

site plan

file discarded 2-9-82

Ordinance

Resolution No. 32-989 Published 11-26-73 (T9-201)

Z-1568

311

312

Z-1568

1.



2.



3.



4.



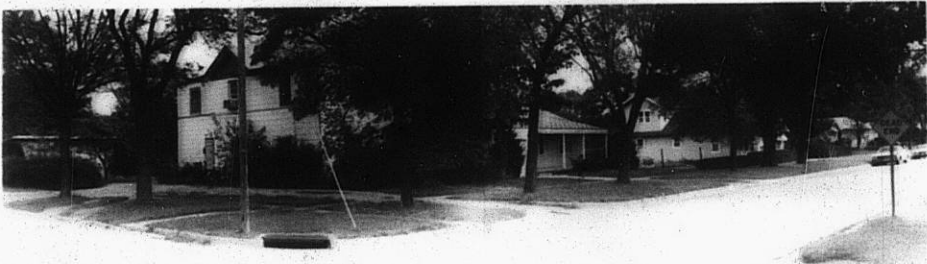
Z-1568

X 1568

X 1568



2.



3.



4.

Z-1568



5.

310

X 52