

NO. Z-1573

"B" to "BB" & "LC"

Desc. West side of Amidon North of the Arkansas River

By Marina Lake Drive, Inc. by Harry D. Bledsoe
DOA BODY ACTION

10-11-73

MAPC

Appvd suby to platting

10-30-73

BCC

Returned to MAPC

11-26-73

MAPC

Approve subject to conditions

Associated with DP-23 Amendment File #5

12-11-73

BCC

Denied

file discarded 2-9-82

Resolution No. _____ Published _____ (T9-201)

Z-1573

238

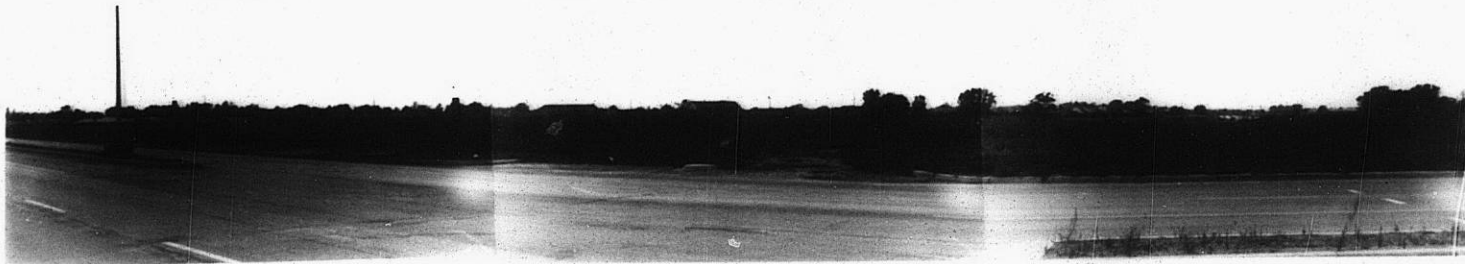
238

Z-1573

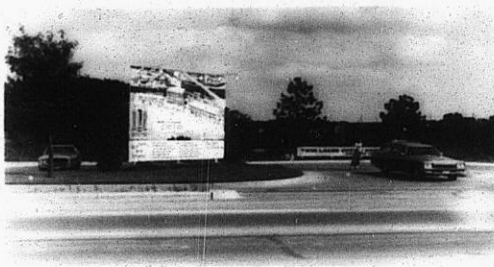
1.



2.



3.



4.



5.

34

34x