

NO. Z-1610

"A" to "BB"

Desc. Southeast corner of Central and Woodchuck

By John M. Roberts

DOA

BODY

ACTION

2-28-74

MAPC

not approved

3-19-74

BCC

denied

file discarded 2-9-82

Resolution No. _____

Published _____

(T9-201)

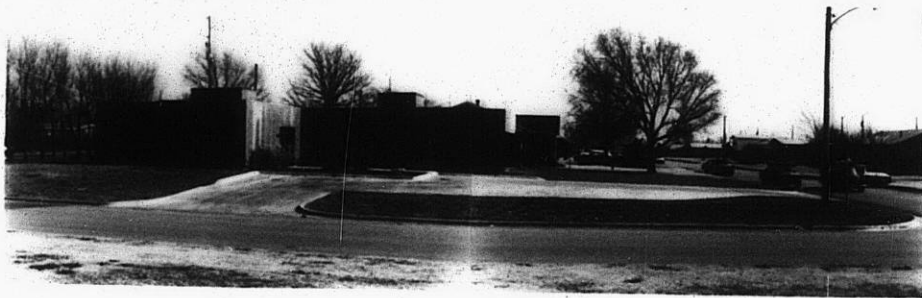
Z-1610

311

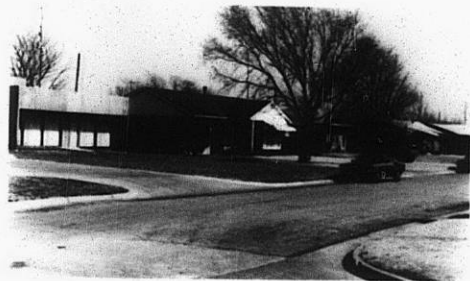
XBE

Z-1610

1.



2.



3.



4.



5.



3E

3E