

NO. 2-1626 5347 "B" to "LC"

Desc. Northwest corner of First and ~~Second~~ Seneca

By Robt. E. Burchfiel

| DOA | BODY | ACTION |
|----------------|------------|--------------------------------|
| 5-9-74 | MAPC | <i>App subject to platting</i> |
| <u>5-28-74</u> | <u>BCC</u> | <i>Approved as recommended</i> |

file discarded 2-9-82

Ordinance No. 33-816 Published 5-28-75 (T9-201)

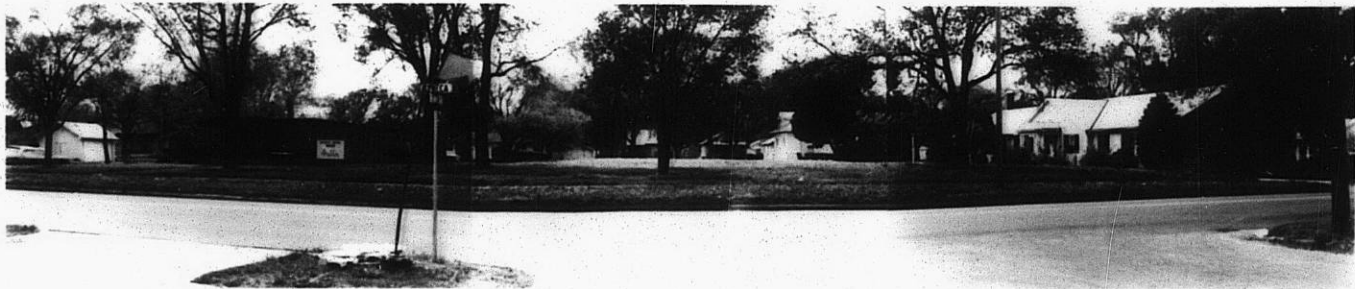
2-1626

319

34x

Z-1626

1.



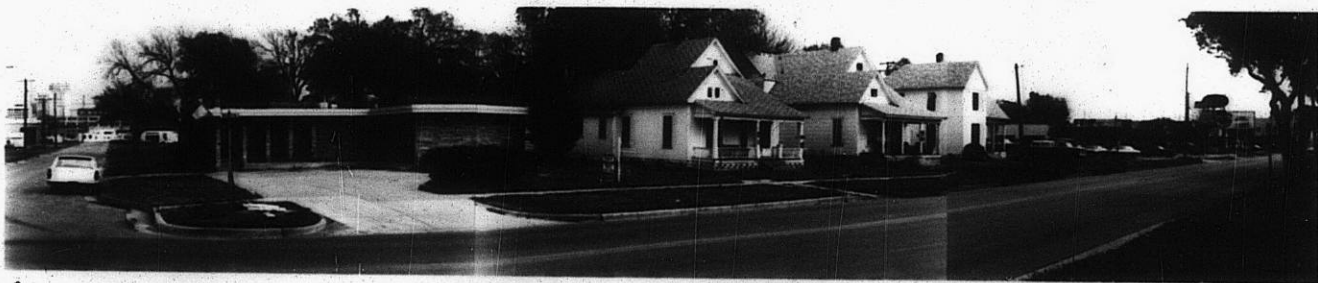
2.



3.

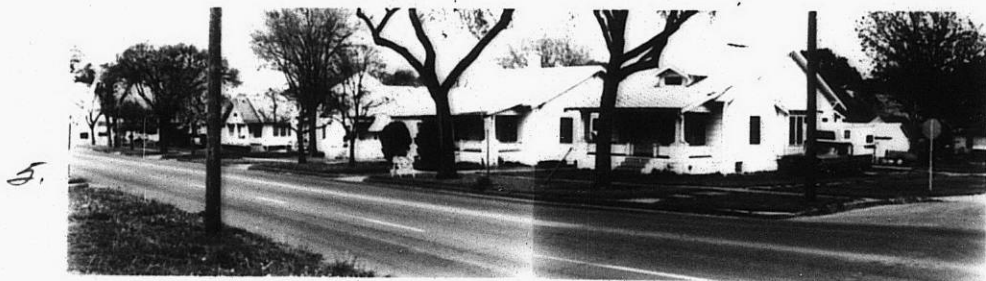
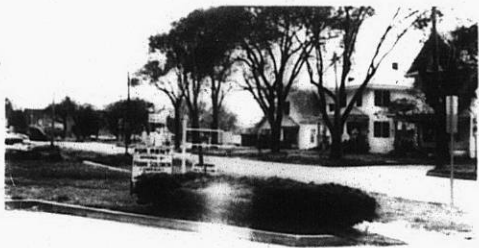


4.



3E

X3E



Z-1626



13

13

5.



6.



7.



Z-1626

8.

9.



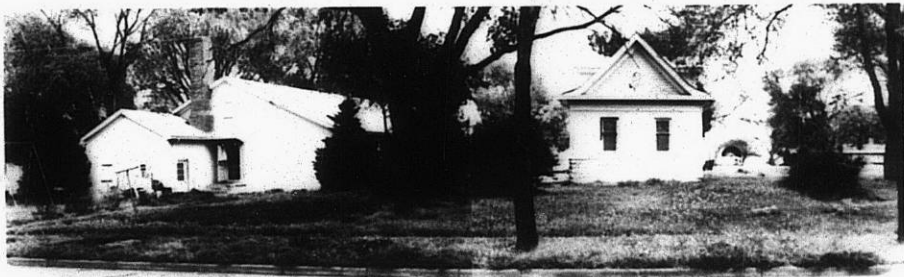
10.



11.



12.



55

55