

NO. Z-1632 5345 "AA" to "A"

Desc. Southwest corner of Lotus and Exposition

By Madelin Brenner by Tom Farris

DOA BODY ACTION

5-23-74 MAPC App subject to sidewalk guarantee

6-11-74 BCC Approved as recommended

file discarded 2-9-82

Ordinance No. 33.321 Published 2-21-74 (T9-201)

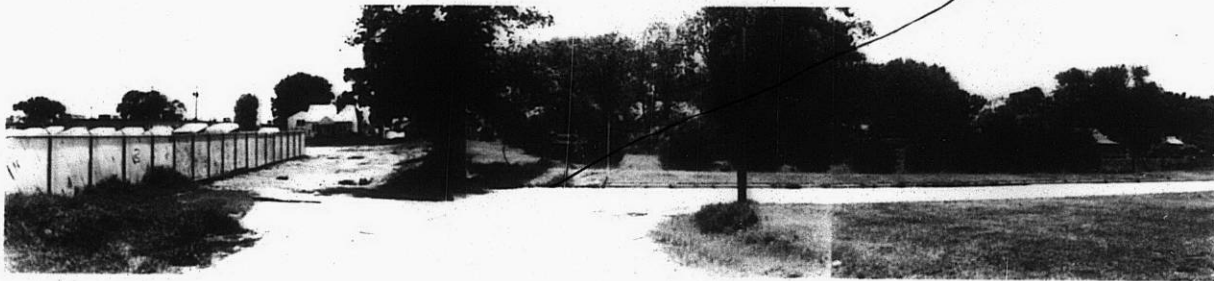
Z-1632

XTE

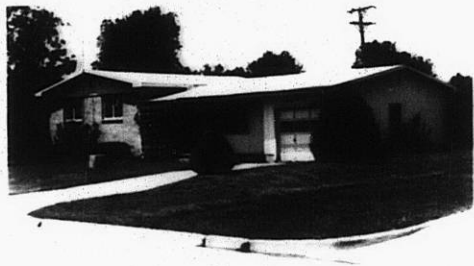
XTE

Z-1632

1.



2.



3.



4.



5.



3E

X 3E