

NO. Z-1721 5048 "AA" to "A"

Desc. Northeast corner Elm and Boyd

By William C. Pinkston by Redmond & Redmond

DOA	BODY	ACTION
-----	------	--------

7-24-75	MAPC	<i>App subject to lot split</i>
---------	------	---------------------------------

8-19-75	BCC	<i>Approved</i>
--------------------	-----	-----------------

file discarded 2-9-82

Ordinance No. 34-447 Published 6-4-76 (T9-201)

Z-1721

319

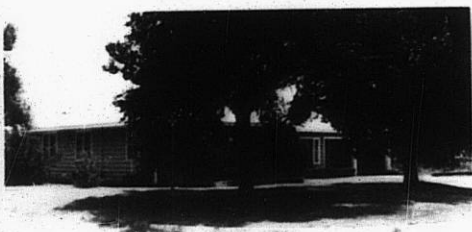
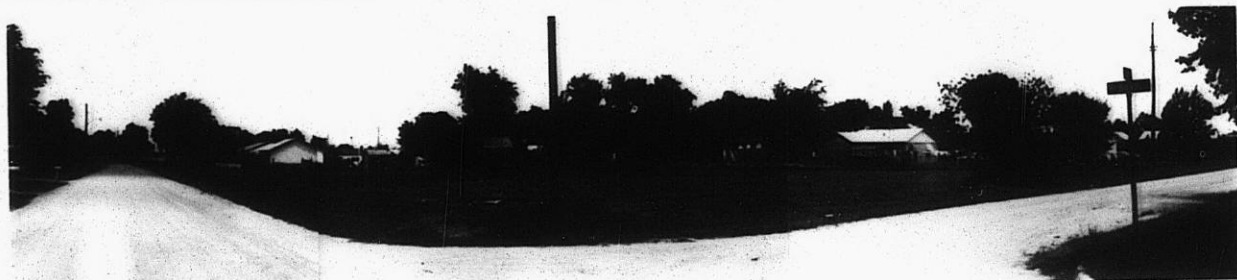
34X

Z-1721

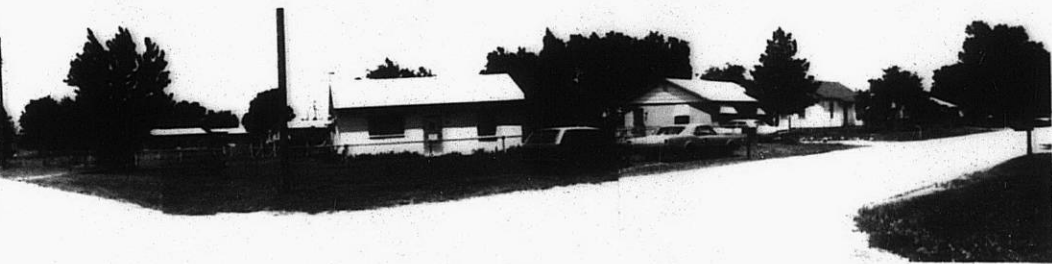
1.



2.



3.



4.

30

34x