

**A1 OVERALL PLANTING PLAN**

**LANDSCAPE NOTES**

1. REFERENCE 11.00-010 FOR GENERAL NOTES APPLICABLE TO THIS DRAWING.
2. ALL PLANTING BEDS ARE TO BE MULCHED WITH A 3" DEEP LAYER OF BROWN, DOUBLE GROUND, HARDWOOD, 1" DIAMETER IN SIZE OR SMALLER INSTALLED AT THE CONCLUSION OF ALL PLANTING OPERATIONS.
3. ALL TREES SHALL HAVE A MINIMUM 8"Ø DIAMETER MULCH RING WITH A CULTIVATED EDGE. REFERENCE DETAIL E2.04, C2/1LP4-101. MULCH SHALL BE A 3" LAYER OF BROWN, DOUBLE GROUND, HARDWOOD, 1" DIAMETER IN SIZE OR SMALLER INSTALLED AT THE CONCLUSION OF ALL PLANTING OPERATIONS.
4. ALL FOUNDATION AND FENCE NOT SURROUNDED BY PLANT BED OR CONCRETE SHALL CONTAIN A 1.5' WIDE MOW STRIP.

**LANDSCAPE REQUIREMENTS**

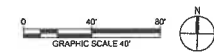
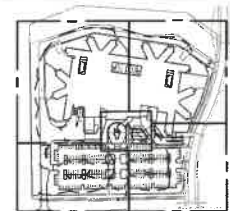
Item	Requirements	Required	Provided
Landscape Street	20 SF x 851 LF (adjusted)	18,000 SF	55,000 SF
Trees	1 shade tree/500 SF required yard	35	32 shade and 12 ornamental
Trees	1 shade tree/20 stalls minimum of 1/2 required parking lot	11	4 shade and 16 ornamental
Island Trees		6	16 ornamental

Notes:  
 Requirement is based on shade trees.  
 2 ornamental trees can be substituted for 1 shade tree.  
 Landscape buffer is in addition to screening fence/wall between residential and site.

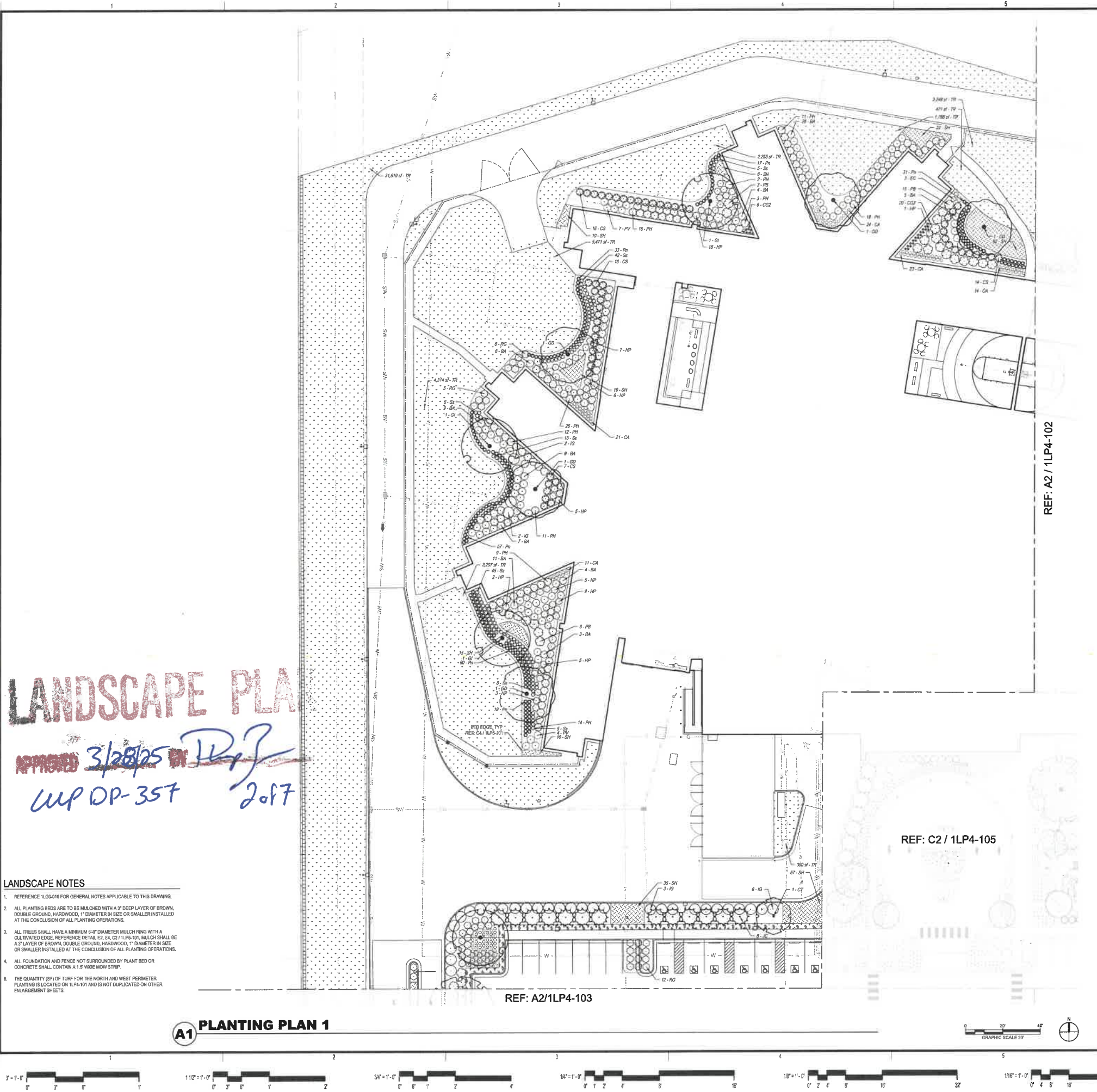
**LANDSCAPE PLAN**

APPROVED 3/28/05 *[Signature]*  
 CUP DP.357 1 of 7

**KEY PLAN**



DATE:	2024.12.19
PROJECT #:	23179
REVISION:	DATE:
POST BID ADD. #1	2024.12.19



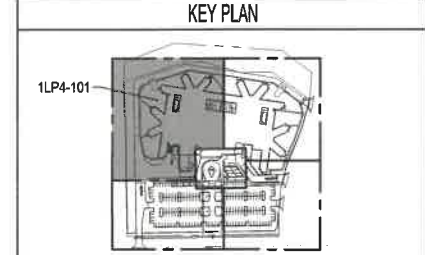
**LANDSCAPE PLAN**  
 APPROVED 3/28/25 BY [Signature]  
 WUP DP-357 2 of 7

- LANDSCAPE NOTES**
- REFERENCE 1LGG-010 FOR GENERAL NOTES APPLICABLE TO THIS DRAWING.
  - ALL PLANTING BEDS ARE TO BE MULCHED WITH A 3" DEEP LAYER OF BROWN, DOUBLE GROUND, HARDWOOD, 1" DIAMETER IN SIZE OR SMALLER INSTALLED AT THE CONCLUSION OF ALL PLANTING OPERATIONS.
  - ALL TREES SHALL HAVE A MINIMUM 6" DIAMETER MULCH RING WITH A CULTIVATED EDGE. REFERENCE DETAIL E2, E4, C2 / 1LPS-101. MULCH SHALL BE A 3" LAYER OF BROWN, DOUBLE GROUND, HARDWOOD, 1" DIAMETER IN SIZE OR SMALLER INSTALLED AT THE CONCLUSION OF ALL PLANTING OPERATIONS.
  - ALL FOUNDATION AND FENCE NOT SURROUNDED BY PLANT BED OR CONCRETE SHALL CONTAIN A 1.5" WIDE MOW STRIP.
  - THE QUANTITY (SQ) OF TURF FOR THE NORTH AND WEST PERIMETER PLANTING IS LOCATED ON 1LPS-101 AND IS NOT DUPLICATED ON OTHER ENLARGEMENT SHEETS.

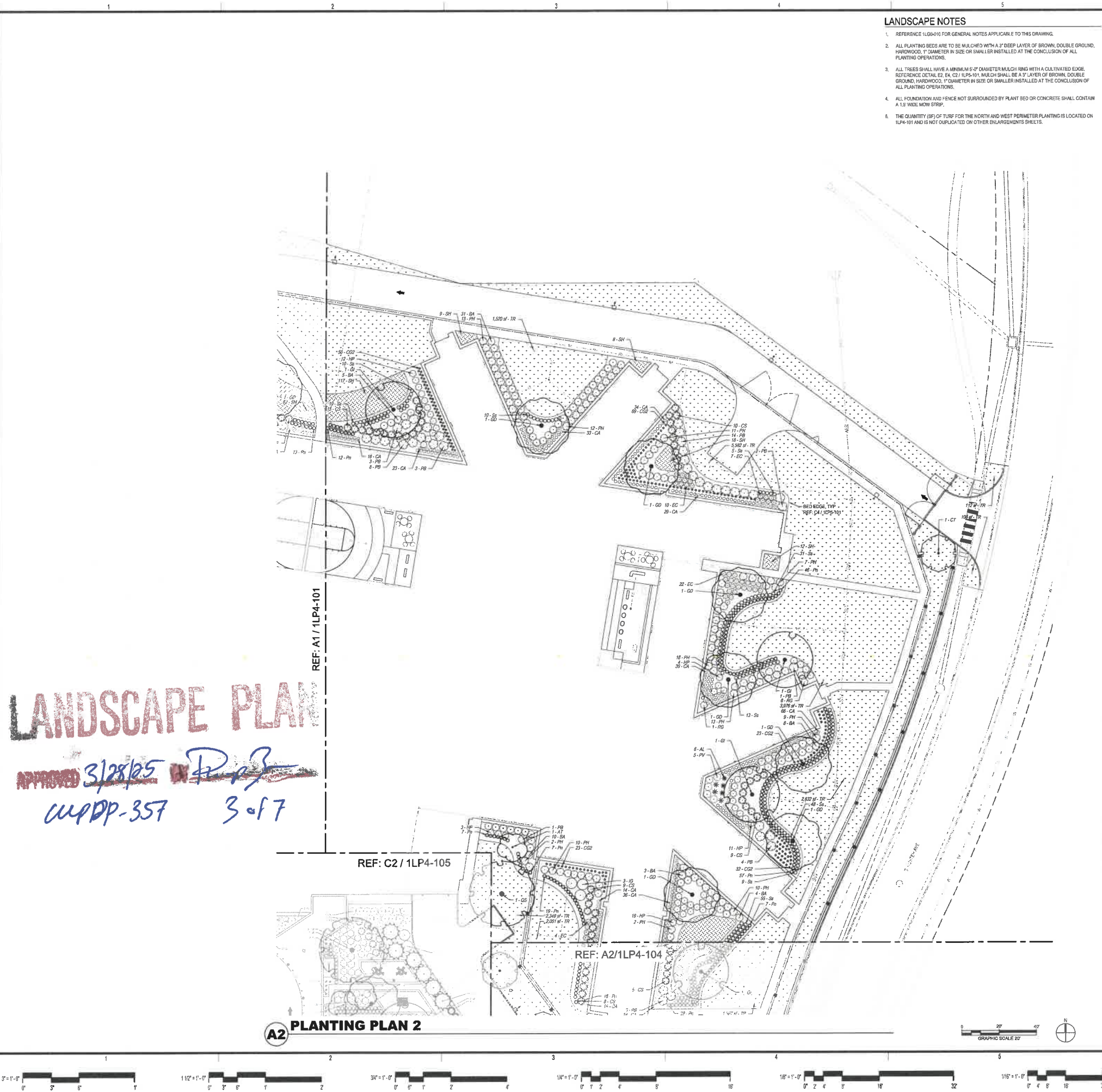
**A1 PLANTING PLAN 1**

**LANDSCAPE LEGEND**  
 NOTE: REFERENCE SHEET 1LGG-010 FOR PLANT QUANTITIES AND SIZING REQUIREMENTS

SYMBOL	CODE	QTY	BOTANICAL NAME	COMMON NAME
<b>EVERGREEN TREES</b>				
[Symbol]	EC	32	JUNIPERUS VIRGINIANA 'CANARY'	CANARY EASTERN REDCEDAR
[Symbol]	ET	38	JUNIPERUS VIRGINIANA 'TAYLOR'	TAYLOR EASTERN REDCEDAR
<b>ORNAMENTAL TREES</b>				
[Symbol]	AT	3	AMELANCHIERA ALBOPIEA 'FT. COCKER'	FT. DAMSEL™ DORNY SPRUCEBERRY
[Symbol]	CE	7	CERCIS CANADENSIS 'FOREST PANTY'	FOREST PANTY™ EASTERN REDBUD MULTI
[Symbol]	MS	8	MAIUS X 'SPRING SNOW'	SPRING SNOW CRANAPPLE
<b>SHADE TREES</b>				
[Symbol]	CT	22	CHLOROPHYTUM 'WONKEYS'	TIMELESS BEAUTY™ REDBUD HOLLOW
[Symbol]	GI	13	GLEDITSIA FRAGRANTISSIMA 'BOYCOLE'	BOYBEE HONEY LOCUST
[Symbol]	GO	14	GYMNOCLADUS DIODICUS 'ESPRESSO'	KENTUCKY COFFEETREE
[Symbol]	PH	11	PLATANUS OCCIDENTALIS	SYCAMORE
[Symbol]	OS	9	QUERCUS BEMURDII	SHAWARD OAK
<b>SHRUBS</b>				
[Symbol]	BA	175	BAPTISIA AUSTRALIS	BLUE WILD HIBISCUS
[Symbol]	CS	223	GERANIUM OCCIDENTALIS 'SNOODS'	SUGAR SHAGBUSH BUTT BUSH
[Symbol]	EC	410	EDONACEA X 'CHEYENNE SPIRIT'	CHEYENNE SPIRIT™ CORNFLOWER
[Symbol]	HP	154	HYPERICUM PUNCTATUM	SPOTTED ST. JOHNSWORT
[Symbol]	IG	56	ILEX GLABRA	INDEBBY HOLLY
[Symbol]	PH	234	PENSTEMON DIGITALIS 'HUSKER RED'	HUSKER RED™ BEAUFORTONGUE
[Symbol]	PH	18	PILOX 'SILKATA BLUE'	BLUE CREEPING PILOX
[Symbol]	PV	51	PILOX 'VIOLET PINWHEELS'	VIOLET PINWHEELS PILOX
[Symbol]	PS	132	PHYSCOPARUS OPALICUS 'MOND'	DIABOLO™ NINESTAR
[Symbol]	RG	258	RHIZ AROMATICA 'GRO LOW'	GRO LOW FRAGRANT SUMAC
<b>GRASSES &amp; PERENNIALS</b>				
[Symbol]	CA	476	CAREX ALBICANS	WHITE-FINGERED SEDGE
[Symbol]	CO	1,531	CAREX GRAYI	GRAY'S SEDGE
[Symbol]	PL	566	PANICUM VIRGATUM 'NORTHWIND'	NORTHWIND SWITCH GRASS
[Symbol]	SH	428	SCHIZOPYRUM BOOPHILUM 'STANDING Ovation'	STANDING Ovation™ LITTLE BLUESTEM
<b>ROOFTOP TERRACE</b>				
[Symbol]	AA	15	ARONIA MELANOCARPA 'LOW SCAPE MOUND'	LOW SCAPE MOUND™ CHOKERBERRY
[Symbol]	AL	16	ADYSSUM FILIFEMINA 'LADY IN RED'	LADY IN RED™ FERN
[Symbol]	BA	4	BAPTISIA AUSTRALIS	BLUE WILD HIBISCUS
[Symbol]	CR	8	CAMPIDIS RADICANS	TRUMPET CREEPER
[Symbol]	HL	2	HELIOPSIS X 'BLACK PEARL'	PRIMOR BLACK PEARL™ CORAL BELLS
[Symbol]	MJ	87	MONARDA DIDYMA 'JACOB CLINE'	JACOB CLINE™ BLUE BALM
<b>GROUND COVERS</b>				
[Symbol]	LS	1,558	LIRIOPE MUSCARI 'SILVERY SUNPROOF'	SILVERY SUNPROOF™ LILYTURF
<b>NATIVE GRASSES</b>				
[Symbol]	SH	673	SPOROBOLUS HETEROLEPIS	PRairie DROPSEED
<b>TURF</b>				
[Symbol]	TR	118,796 SF	TURF 500 BLEND	WONKEYS™ 10% KENTUCKY BLUE GRASS



DATE:	2024.12.19
PROJECT #:	23179
REVISION:	DATE
POST DIG. NO. #1	2024.12.19



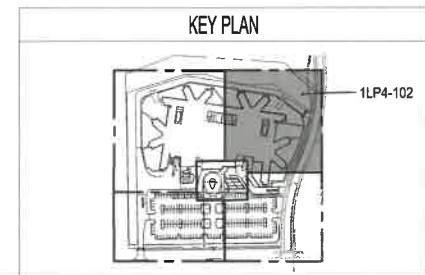
**LANDSCAPE NOTES**

1. REFERENCE 1LG04016 FOR GENERAL NOTES APPLICABLE TO THIS DRAWING.
2. ALL PLANTING BEDS ARE TO BE MULCHED WITH A 2" DEEP LAYER OF BROWN DOUBLE GROUND, HARDWOOD, 1" DIAMETER IN SIZE OR SMALLER INSTALLED AT THE CONCLUSION OF ALL PLANTING OPERATIONS.
3. ALL TREES SHALL HAVE A MINIMUM 5'-0" DIAMETER MULCH RING WITH A CULTIVATED EDGE. REFERENCE DETAIL EC-04, C2 / 1LP5-101. MULCH SHALL BE A 1" LAYER OF BROWN DOUBLE GROUND, HARDWOOD, 1" DIAMETER IN SIZE OR SMALLER INSTALLED AT THE CONCLUSION OF ALL PLANTING OPERATIONS.
4. ALL FOUNDATION AND FENCE NOT SURROUNDED BY PLANT BED OR CONCRETE SHALL CONTAIN A 1.5' WIDE MOW STRIP.
5. THE QUANTITY (SF) OF TURF FOR THE NORTH AND WEST PERIMETER PLANTING IS LOCATED ON 1LP4-101 AND IS NOT DUPLICATED ON OTHER ENLARGEMENTS SHEETS.

**LANDSCAPE LEGEND**

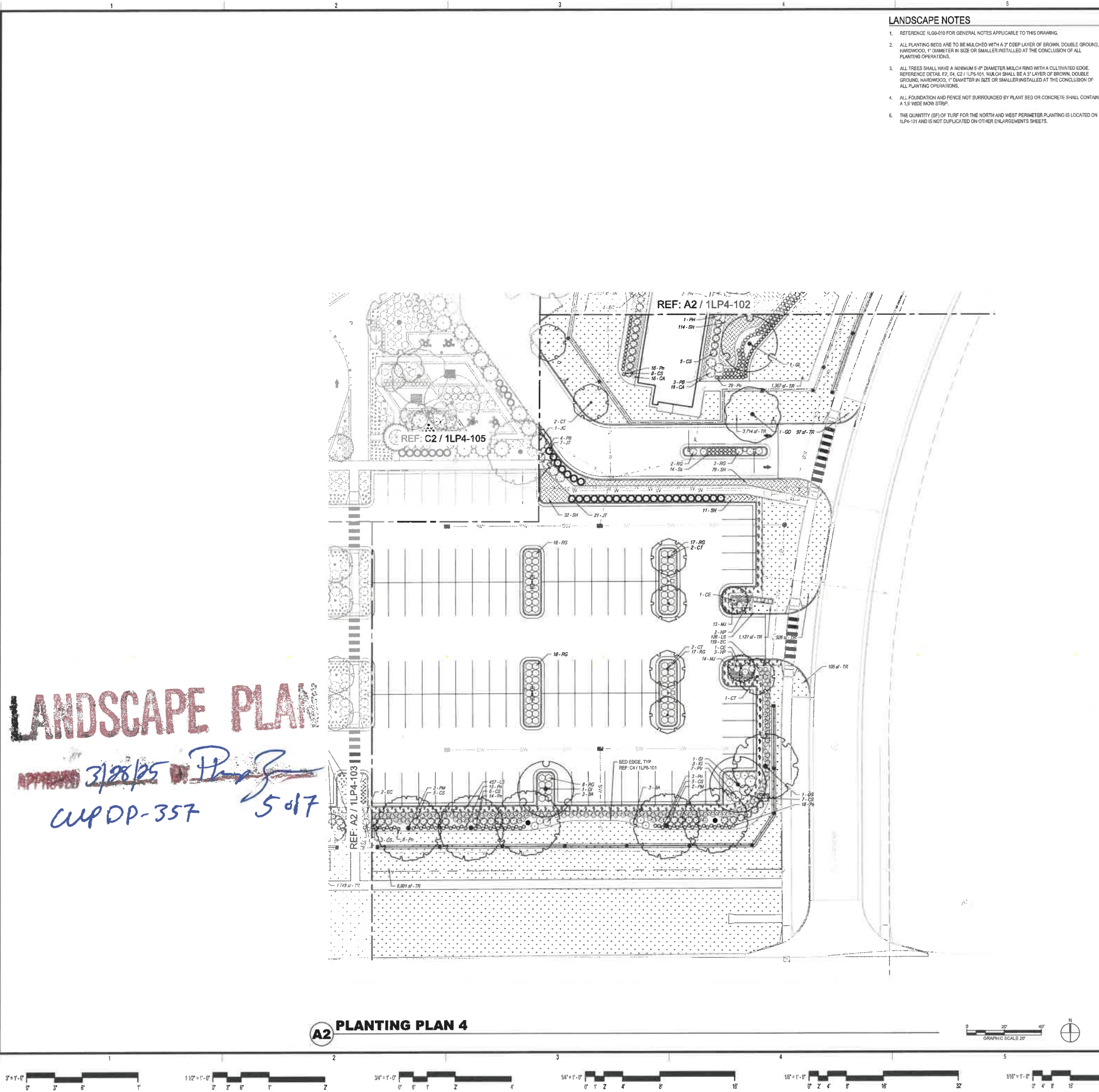
NOTE: REFERENCE SHEET 1LG0-010 FOR PLANT QUANTITIES AND SIZING REQUIREMENTS

SYMBOL	CODE	QTY	BOTANICAL NAME	COMMON NAME
<b>EVERGREEN TREES</b>				
[Symbol]	JC	32	JUNIPERUS VIRGINIANA 'CAMPERTY'	CAMPERTY EASTERN REDCEDAR
[Symbol]	JT	39	JUNIPERUS VIRGINIANA TAYLOR'	TAYLOR EASTERN REDCEDAR
<b>DECIDUOUS TREES</b>				
[Symbol]	AT	3	AMELANCHIER ARBOREA 'TFT COUNTY'	PINK DANDELION DONNY SERVICEBERRY
[Symbol]	CE	7	CERCIS CANADENSIS FOREST PANSY'	FOREST PANSY EASTERN REDBUD MULT
[Symbol]	MS	8	MALUS X SPRING SNOW'	SPRING SNOW CRABAPPLE
<b>SHADE TREES</b>				
[Symbol]	CT	22	CHILIPSS LINEARIS 'WOMEN'S'	TIMELESS BEAUTY DESERT WILLOW
[Symbol]	DI	13	DIQUETIA TRICANTHOS NEESII 'SIXCLOCK'	SIXCLOCK HONEY LOCUST
[Symbol]	GD	14	GYMNOCLADUS DIOODUS ESPRESSO'	KENTUCKY COFFEETREE
[Symbol]	PH	11	PLATANUS OCCIDENTALIS	SWYCARRE
[Symbol]	OS	8	QUERCUS BRANIFFOR	BRANIFF OAK
<b>SHRUBS</b>				
[Symbol]	BA	125	BAPTISIA AUSTRALIS	BLUE WILD INDIGO
[Symbol]	CS	223	CEPHALANTHUS OCCIDENTALIS 'SACROSS'	SUGAR SHACK BUTTONEUSH
[Symbol]	EC	443	ECHINACEA X CHEYENNE SPIRIT'	CHEYENNE SPIRIT CONEFLOWER
[Symbol]	EP	194	HYPERICUM PUNCTATUM	SPOTTED ST. JOHNSWORT
[Symbol]	IO	56	ILEX GLABRA	HINBERRY HOLLY
[Symbol]	PH	234	PENSTEMON DIGITALIS 'LADYBIRD REE'	LADYBIRD RED BEARTRONQUE
[Symbol]	PH	18	PHLOX SUBULATA 'SILK'	BLUE CREEPING PHLOX
[Symbol]	PV	51	PHLOX X VIOLET PRINCEBELLS'	VIOLET PRINCEBELLS PHLOX
[Symbol]	PR	182	PHYSCALOPUS OPULIFOLIUS 'MONDLO'	DIABOLO HIBISCUS
[Symbol]	RG	238	RHUS AROMATICA 'GRD LOW'	GRDLOW FRAGRANT SUMAC
<b>GRASSES &amp; PERENNIALS</b>				
[Symbol]	CA	478	CAREX ALBICANS	WHITE-TINGED SEDGE
[Symbol]	GD	1,001	CAREX GRAYI	GRAYS SEDGE
[Symbol]	IN	56	PANICUM VIRGATUM 'WORTHINSKY'	NORTHWIND SWITCH GRASS
[Symbol]	SK	428	SCHIZACHYRIUM SCOPARIUM 'STANDING OVATION'	STANDING OVATION LITTLE BLUESTEM
<b>ROCKY TERRACE</b>				
[Symbol]	AA	15	ARONIA MELANOCarpa 'LOW SCAPE MOUND'	LOW SCAPE MOUND CHOKEBERRY
[Symbol]	AL	16	ARISTIDA FLUXIFERNA 'LADY IN RED'	LADY IN RED FERN
[Symbol]	BA	4	BAPTISIA AUSTRALIS	BLUE WILD INDIGO
[Symbol]	CR	8	CAMPES RADICANS	TRUMPET CREEPER
[Symbol]	HL	2	HEUCHERA X BLACK PEARL'	PRINOR BLACK PEARL CORAL BELLS
[Symbol]	JU	67	MONARDA DIDYMA 'JACOB CLINE'	JACOB CLINE SEE BLM
<b>GROUND COVERS</b>				
[Symbol]	LS	1,354	LIRIOPE MISCARZI 'SILVER SUNSHINE'	SILVER SUNSHINE LILY TURF
<b>NATIVE GRASSES</b>				
[Symbol]	DI	673	SPOROBOLUS HETEROLEPIS	PRAIRIE DROPSEED
<b>TURF</b>				
[Symbol]	TR	118,796 SF	TURF 500 BLEND	90% FESCUE / 10% KENTUCKY BLUE GRASS



DATE	2024.12.19
PROJECT #	23179
REVISION	DATE
POST BID ADD. #1	2024.12.19





**LANDSCAPE NOTES**

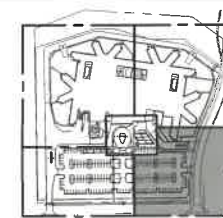
1. REFERENCE 1L60-010 FOR GENERAL NOTES APPLICABLE TO THIS DRAWING.
2. ALL PLANTING BEDS ARE TO BE MULCHED WITH A 3" DEEP LAYER OF BROWN, DOUBLE GROUND, HARDWOOD, 1" DIAMETER IN SIZE OR SMALLER INSTALLED AT THE CONCLUSION OF ALL PLANTING OPERATIONS.
3. ALL TREES SHALL HAVE A MINIMUM 6" 4" DIAMETER MULCH RING WITH A CULTIVATED EDGE. REFERENCE DETAIL E3, E4, C2 / 1LP4-101. MULCH SHALL BE A 3" LAYER OF BROWN, DOUBLE GROUND, HARDWOOD, 1" DIAMETER IN SIZE OR SMALLER INSTALLED AT THE CONCLUSION OF ALL PLANTING OPERATIONS.
4. ALL FOUNDATION AND FENCE NOT SURROUNDED BY PLANT BED OR CONCRETE SHALL CONTAIN A 1.5' WIDE MOW STRIP.
5. THE QUANTITY (SF) OF TURF FOR THE NORTH AND WEST PERIMETER PLANTING IS LOCATED ON 1LP4-101 AND IS NOT DUPLICATED ON OTHER ENLARGEMENTS SHEETS.

**LANDSCAPE LEGEND**

NOTE: REFERENCE SHEET 1L60-010 FOR PLANT QUANTITIES AND SIZING REQUIREMENTS

SYMBOL	CODE	QTY	BOTANICAL NAME	COMMON NAME
<b>EVERGREEN TREES</b>				
[Symbol]	32		JUNIPERUS VIRGINIANA 'CAHARTY'	CAHARTI EASTERN REDCEDAR
[Symbol]	39		JUNIPERUS VIRGINIANA TAYLOR	TAYLOR EASTERN REDCEDAR
<b>ORNAMENTAL TREES</b>				
[Symbol]	3		AMELANCHIER ALBOFLORA 'TIF COUNTY'	PINK DOGWOOD 'DOHNY SERVICEBERRY'
[Symbol]	7		CERCIS CANADENSIS 'FOREST PANSY'	FOREST PANSY/EASTERN REDBUD MAX
[Symbol]	8		MALUS X 'SPRING SNOW'	SPRING SNOW CRABAPPLE
<b>SHADE TREES</b>				
[Symbol]	22		CHLORIS LANCEOLATA 'MOMENT'	TIMBLESS BEAUTY/BIRDSEED WILLOW
[Symbol]	13		GLEITSIA TRICANTHOS 'NEEM'S WYCOLE'	WYCOLE HONEY LOCUST
[Symbol]	14		GYMNOCLADUS DIPOLOUS 'ESPRESSO'	KENTUCKY COFFEE TREE
[Symbol]	11		PLATANUS OCCIDENTALIS	BYGONORE
[Symbol]	9		QUERCUS SHAMBERGII	SHAMBERG OAK
<b>SHRUBS</b>				
[Symbol]	175		BAPTISA AUSTRALIS	BLUE WILD INDIGO
[Symbol]	223		CORNALANTHUS OCCIDENTALIS 'SACOSB'	SUGAR SHAGBEE BUTTERNUTSH
[Symbol]	443		ETHANAZEA X 'CHEYENNE SPIRIT'	CHEYENNE SPIRIT CONEFLOWER
[Symbol]	154		HYPERICUM PUNCTATUM	SPOTTED ST. JOHNSWORT
[Symbol]	58		ILEX CLUMOSA	HANDBERRY HOLLY
[Symbol]	234		PENTSTEMON DIGITALIS 'HUSKER RED'	HUSKER RED BEARDTONGUE
[Symbol]	18		PHLOX SUBULATA 'BLUE'	BLUE CREEPING PHLOX
[Symbol]	51		PHLOX X 'VIOLET PINKWHEELS'	VIOLET PINKWHEELS PHLOX
[Symbol]	192		PHYSCOPARUS OPALIFOLIUS 'MONROE'	CAROLINA MONROE
[Symbol]	258		RUUS AROMATICA 'GRO LOW'	GRO LOW FRAGRANT SUMAC
<b>GRASSES &amp; PERENNIALS</b>				
[Symbol]	478		CAREX ALBICANS	WHITE-FINGERED SEDGE
[Symbol]	1331		CAREX GRAYI	GRAY'S SEDGE
[Symbol]	586		PANICUM VIRGATUM 'NORTHERN'	NORTHERN SWITCH GRASS
[Symbol]	428		POKAZADYRIN SCOPARIUM STANDING OVATION'	STANDING OVATION LITTLE BLUESTEM
<b>ROOFTOP TERRACE</b>				
[Symbol]	15		RYDIA MELANOCARPA 'LOW SCAPE MOUND'	LOW SCAPE MOUND CHICKENBERRY
[Symbol]	16		ADYRUM FILIFEMINA 'LADY IN RED'	LADY IN RED FERN
[Symbol]	4		BAPTISA AUSTRALIS	BLUE WILD INDIGO
[Symbol]	8		CAMPIS RADICANS	TRUMPET CREEPER
[Symbol]	2		HEXCHERA X 'BLACK PEARL'	PEARL BLACK PEARL CORAL BELLS
[Symbol]	67		MONARDIA DIDYMA 'JACOB CLINE'	JACOB CLINE BEE BALM
<b>GROUND COVERS</b>				
[Symbol]	134		LIRIOPE MUSCARI 'SILVERY BIRNPROOF'	SILVERY BIRNPROOF LILY TURF
<b>NATIVE GRASSES</b>				
[Symbol]	672		SPOROBOLUS HETEROLEPIS	PRairie DROPSEED
<b>TURF</b>				
[Symbol]	114, 196 SF		TURF 300 BLEND	NON/PESDED 10% KENTUCKY BLUE GRASS

**KEY PLAN**



**PULSE+ DESIGN GROUP**  
422 Pennsylvania Ave., Suite 1050  
Kansas City, MO 64112  
pulsegroup.com



**TESSERE**  
3901 SOUTH CLUSTER AVENUE  
WICHITA, KANSAS 67221  
www.tessere.com  
© 2024 TESSERE

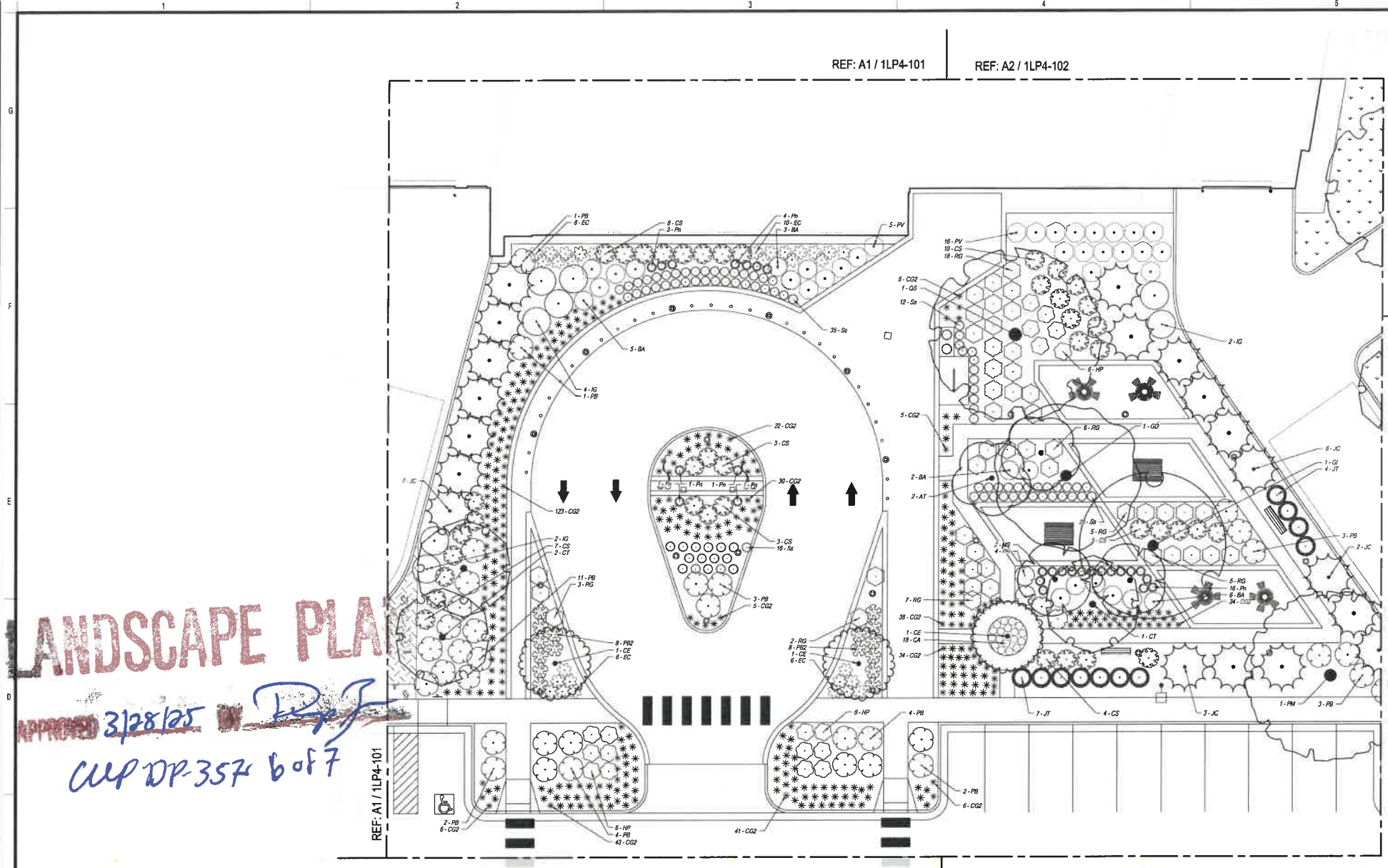


**SOUTH CENTRAL KANSAS REGIONAL PSYCHIATRIC HOSPITAL  
SEDGWICK COUNTY  
PERMIT DOCUMENTS**  
3901 SOUTH CLUSTER AVENUE  
WICHITA, KANSAS 67221

DATE:	2024.12.19
PROJECT #:	23179
REVISION:	DATE
6 POST 300 ADD. #1	2024.12.19

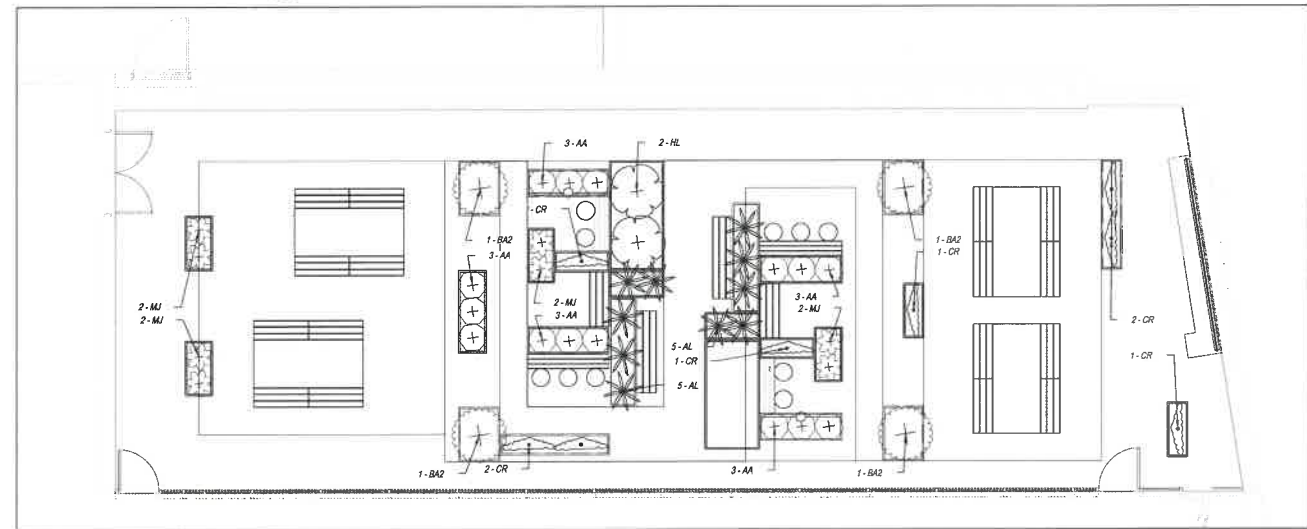
1LP4-104  
PLANTING PLAN 4

Autodesk Docs://23179P - Sedgewick County Mental Health Hospital/18170R24001\_A\_SCMHH\_V24.rvt  
12/17/2024 11:42:01 AM  
DRAWING SHEET # 070



**LANDSCAPE PLAN**  
APPROVED 3/28/25  
CUP DP-357 6 of 7

**C2 PLANTING PLAN 5 - VISITOR PLAZA**



**A1 LANDSCAPE LAYOUT PLAN 2B - STAFF ROOFTOP AMENITY**

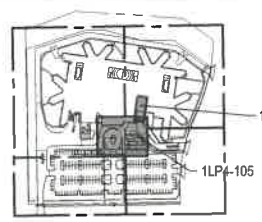
**LANDSCAPE LEGEND**  
NOTE: REFERENCE SHEET 1LGP-010 FOR PLANT QUANTITIES AND SIZING REQUIREMENTS

SYMBOL	CODE	QTY	BOTANICAL NAME	COMMON NAME
<b>EVERGREEN TREES</b>				
[Symbol]	JC	32	JUNIPERUS VIRGINIANA 'CAMPERT'	CAMPERT EASTERN REDCEDAR
[Symbol]	T	30	JUNIPERUS VIRGINIANA 'TAYLOR'	TAYLOR EASTERN REDCEDAR
<b>ORNAMENTAL TREES</b>				
[Symbol]	AT	3	AMELANCHIER ALBOPIEA 'TIFT COUNTY'	PINK DAWGEL™ DOWNY SERVICEBERRY
[Symbol]	CE	7	CERCIS CANADENSIS 'FOREST PANSY'	FOREST PANSY™ EASTERN REDBUD MULT.
[Symbol]	MS	8	MAIUS 'SPRING SNOW'	SPRING SNOW CRABAPPLE
<b>SHADE TREES</b>				
[Symbol]	CT	22	CHALOPSE LINEARIS 'MONHEIM'	TIMELESS BEAUTY™ DESERT WILLOW
[Symbol]	GR	13	QUERCUS TRICANTHOS 'NORMA 'SUNCOLE'	SUNBEE HONEY LOCUST
[Symbol]	GD	14	GYMNOCLADUS DIOCLOS 'ESPRESSO'	KENTUCKY COFFEETREE
[Symbol]	PH	11	PLATANUS OCCIDENTALIS	CYCANIDE
[Symbol]	GS	9	QUERCUS BERBERIDIS	SHENANDO OHK
<b>SHRUBS</b>				
[Symbol]	BA	175	BAPTISIA AUSTRALIS	BLUE WILD INDIGO
[Symbol]	CS	203	CERIALANTRIS OCCIDENTALIS 'SMOOTH'	BUGABO SHRUB BUTTERBUSH
[Symbol]	EC	443	ECHECARRIA 'CHEYENNE SPIRIT'	CHEYENNE SPIRIT™ JONERLOWER
[Symbol]	HP	154	HYPENICUM PUNCTATUM	SPOTTED ST. JOHNSWORT
[Symbol]	IG	56	ILEX GLABRA	INBERRY HOLLY
[Symbol]	PH	234	PENSTEMON DOTTAUS 'HUGGER RED'	HUGGER RED™ SCARLETROSE
[Symbol]	PR	18	PHLOX SUBULATA 'BLUE'	BLUE CREEPING PHLOX
[Symbol]	PV	51	PHLOX 'VIOLET PINKWHEELS'	VIOLET PINKWHEELS™ PHLOX
[Symbol]	PR	182	PHYSCOCARPUS OPALIFOLIUS 'MOND IT'	DIABLO™ NINEBARK
[Symbol]	RO	258	RHUS AROMATICA 'GRD LOW'	GRD LOW FRAGRANT SUNCAC
<b>GRASSES &amp; PERENNIALES</b>				
[Symbol]	CA	476	CAREX ALBICANS	WHITE-TINGED SEDGE
[Symbol]	CO	1301	CAREX GRAYI	GRAY'S SEDGE
[Symbol]	PI	596	PANICUM VIRGATUM 'NORTHWIND'	NORTHWIND™ SWITCH GRASS
[Symbol]	RI	428	SCISZACHYRIUM SCOPARIUM 'STANDING OVATION'	STANDING OVATION ON LITTLE BLUESTEM
<b>ROOFTOP TERRACE</b>				
[Symbol]	AA	15	ARONIA MELANOCARPA 'LOW SCAPE MOUND'	LOW SCAPE MOUND CHERRYBERRY
[Symbol]	AI	16	ADYTIUM FILIPPEANA 'LADY IN RED'	LADY IN RED FERN
[Symbol]	BA2	4	BAPTISIA AUSTRALIS	BLUE WILD INDIGO
[Symbol]	CR	8	CAMPIDIS RADICANS	TRUMPET CREEPER
[Symbol]	HL	2	HEUCHERA X BLACK PEARL	PRIMOR BLACK PEARL CORAL BELLS
[Symbol]	MJ	67	MONARDA DIDYMA 'JACOB CLINE'	JACOB CLINE BLUE SALM
<b>GROUND COVERS</b>				
[Symbol]	LS	1358	LINUM MURCARI 'SILVERY SUNPROOF'	SILVERY SUNPROOF™ LILYTURF
<b>NATIVE GRASSES</b>				
[Symbol]	SH	673	SPOROBOLUS HETEROLEPIS	PRAREE DROPPED
<b>TURF</b>				
[Symbol]	TR	118,796 SF	TURF 500 BLEND	500/500 BLEND™ KENTUCKY BLUEGRASS

**LANDSCAPE NOTES**

- REFERENCE 1LGP-010 FOR GENERAL NOTES APPLICABLE TO THIS DRAWING.
- ALL PLANTING BEDS ARE TO BE MULCHED WITH A 3" DEEP LAYER OF BROWN DOUBLE GROUND, HARDWOOD, 1" DIAMETER IN SIZE OR SMALLER INSTALLED AT THE CONCLUSION OF ALL PLANTING OPERATIONS.
- ALL TREES SHALL HAVE A MINIMUM 5-0" DIAMETER MULCH RING WITH A CULTIVATED EDGE. REFERENCE DETAIL C2, E4, C2 (1LP5-101). MULCH SHALL BE A 3" LAYER OF BROWN DOUBLE GROUND, HARDWOOD, 1" DIAMETER IN SIZE OR SMALLER INSTALLED AT THE CONCLUSION OF ALL PLANTING OPERATIONS.
- ALL FOUNDATION AND FENCE NOT SURROUNDED BY PLANT BED OR CONCRETE SHALL CONTAIN A 1.5' WIDE MOW STRIP.
- ALL PLANTERS TO RECEIVE PLANTING SOIL COMPOSED OF A MIXTURE OF TOPSOIL (45-50%), COARSE SAND (40-45%), AND CATEGORY "AA" OR "A" COMPOST (10%).
- THE QUANTITY (SF) OF TURF FOR THE NORTH AND WEST PERIMETER PLANTING IS LOCATED ON 1LP4-101 AND IS NOT DUPLICATED ON OTHER ENLARGEMENTS SHEETS.

**KEY PLAN**



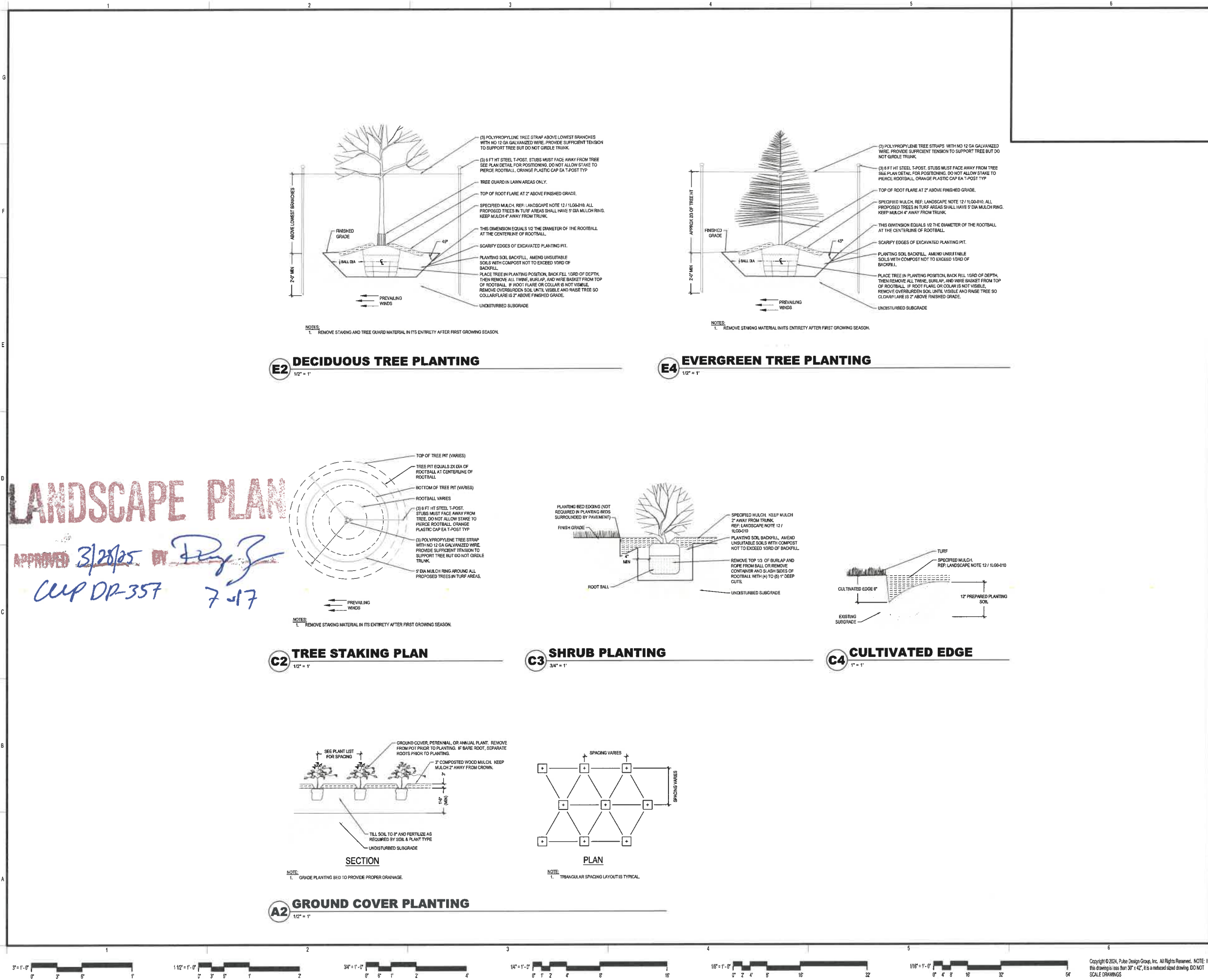
**PULSE+ DESIGN GROUP**  
462 Pennsylvania Ave., Suite 1050  
Kansas City, MO 64112  
pulsegroup.com

**TESSERE**  
LINDSEY S. TESSERE, L.S.  
Landscape Architect  
1001 South Quarter Avenue  
Wichita, Kansas 67217  
913.262.8807  
tessere@tessere.com  
© 2024 TESSERE

**SOUTH CENTRAL KANSAS REGIONAL PSYCHIATRIC HOSPITAL**  
**SEDGWICK COUNTY**  
**PERMIT DOCUMENTS**  
3901 SOUTH QUARTER AVENUE  
WICHITA, KANSAS 67217  
PFS240403

DATE: 2024.12.19  
PROJECT #: 23179  
REVISION: 6  
POST DD-ADD. #1  
DATE: 2024.12.19

**1LP4-105**  
PLANTING PLANS



# LANDSCAPE PLAN

APPROVED 3/28/25 BY *[Signature]*  
CUP DP-357 7-17



DATE:	2024.12.19
PROJECT #:	23179
REVISION	DATE