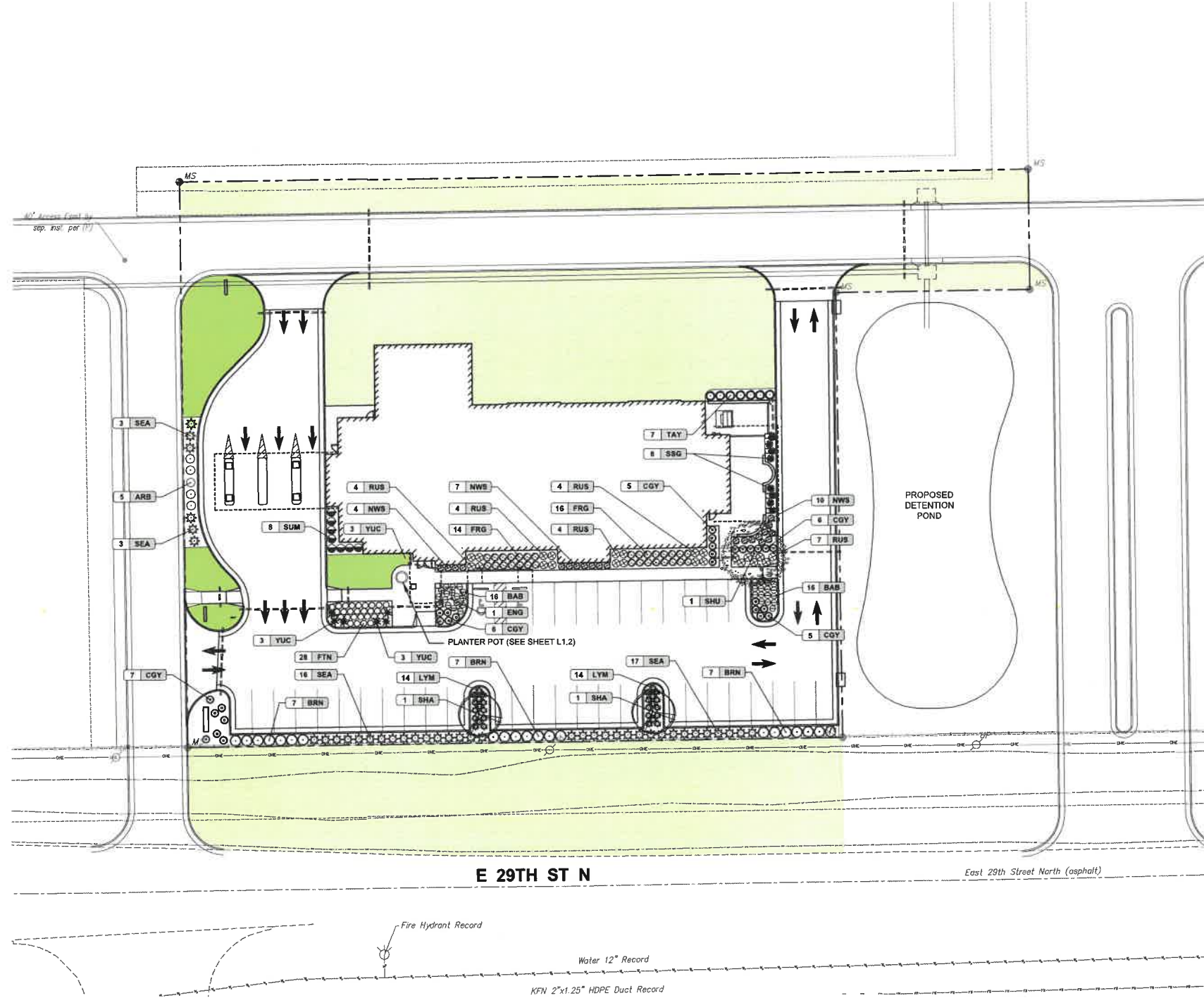


# LANDSCAPE PLAN

APPROVED 9/26/25 BY *[Signature]*  
 DP-359 1 of 2



**LEGEND**  
 FESCUE SOD  
 FESCUE SEED  
 IRRIGATION SLEEVES

E 29TH ST N

East 29th Street North (asphalt)

Fire Hydrant Record  
 Water 12" Record  
 KFN 2"x1.25" HDPE Duct Record

FOR MABCD USE ONLY



ALL WORK SHOWN ON THIS DRAWING IS THE EXCLUSIVE PROPERTY OF HUTTON DESIGN + BUILD. NO PART OF THIS DRAWING IS TO BE REPRODUCED OR TRANSMITTED IN ANY FORM OR BY ANY MEANS WITHOUT THE WRITTEN CONSENT OF HUTTON DESIGN + BUILD.

Project Number: 255223  
**COMMUNITY NATIONAL BANK & TRUST**  
**WICHITA HEADQUARTERS & BANKING CENTER**  
 11XXX E. 29th St. N.  
 Wichita, KS 67226

Issue:  
 BID & PERMIT  
 Date:  
 2025.09.04

REVISIONS	Description	Date
1		

PROFESSIONAL ENGINEERING CONSULTANTS, P.A.  
 333 SOUTH TOPEKA, WICHITA, KS 67202  
 316-262-2891 www.pcc.com  
**PEC**  
 REGISTRATION NUMBER: 255852-007

**L1.1**  
 LANDSCAPE PLAN

SAVED 9/30/2025 8:36:26 AM BY RYAN.OTT  
 PLOTTED 9/30/2025 9:24:35 AM BY RYAN.OTT  
 PROJECT: COMMUNITY NATIONAL BANK & TRUST WICHITA HEADQUARTERS & BANKING CENTER  
 WORKING MODELS/PEC/30-CIVIL/255852-007/L1.1 LANDSCAPE PLAN.DWG

# LANDSCAPE PLAN

APPROVED 9/26/25 BY *DRJ*

DP-359  
2 of 2

## GENERAL LANDSCAPE NOTES

- CONTRACTOR SHALL MAKE THEMSELVES FAMILIAR WITH ALL APPLICABLE SPECIFICATIONS RELATED TO THE LANDSCAPE.
- LANDSCAPE CONTRACTOR IS TO VERIFY THE LOCATION OF ALL UNDERGROUND UTILITIES (INCLUDING THOSE INDICATED ON THE PLAN) PRIOR TO INSTALLATION OF PLANT MATERIAL. UTILITIES CAN BE FLAGGED BY CALLING 811, OR 1-800-344-7233, OR ONLINE AT [www.kansasonline.com](http://www.kansasonline.com). DAMAGE TO UTILITIES SHALL BE AVOIDED DURING THE COURSE OF WORK. THE LANDSCAPE CONTRACTOR IS RESPONSIBLE FOR REPAIRING ANY AND ALL DAMAGE TO UTILITIES, STRUCTURES, SITE APPURTENANCES, ETC. WHICH OCCUR AS A RESULT OF THE LANDSCAPE CONSTRUCTION.
- LANDSCAPE CONTRACTOR SHALL COORDINATE WITH THE MASS GRADING CONTRACTOR TO INSURE THEY THOROUGHLY RIP AND ALLEVIATE ALL COMPACTED SOILS FROM THEIR HAULING AND PLACEMENT OPERATIONS.
- ALL WATER REQUIRED FOR LANDSCAPE OPERATIONS AND FOR ESTABLISHING LANDSCAPE ON THIS SITE WILL BE PROVIDED BY THE OWNER FROM ON-SITE SOURCES AND SUPPLIED TO THE LANDSCAPE CONTRACTOR AT NO CHARGE.
- PLANTING DATES FOR PLANT MATERIAL SHALL BE DURING THE MONTHS BETWEEN FEB. 15TH AND MAY 31ST OR SEPT. 15TH AND DEC. 15. PLANTING SHALL ONLY BE CONDUCTED WHEN THE GROUND IS NOT FROZEN, SNOW-COVERED, OR IN AN OTHERWISE UNSUITABLE CONDITION FOR PLANTING. DEVIATION FROM THE ABOVE PLANTING DATES WILL ONLY BE PERMITTED WITH APPROVAL FROM THE OWNER'S REPRESENTATIVE.
- MULCHED LANDSCAPE BED EDGES SHALL BE LINED WITH PRO-STEEL EDGING (OR APPROVED EQUAL) WHEN ADJACENT TO TURF AREAS.
- ALL SHRUB/PERENNIAL PLANTING BEDS SHALL BE TREATED WITH A PRE-EMERGENT HERBICIDE SUCH AS TRIFLORAL OR EQUAL. APPLY AS PER MANUFACTURER'S RECOMMENDATION. THE PRE-EMERGENT SHALL NOT BE APPLIED UNTIL AFTER ALL PLANTING AND MULCHING WITHIN THESE AREAS ARE COMPLETE. DO NOT DISTURB AREAS AFTER APPLICATION. WATER IN AS DIRECTED.
- INSTALL 4" MIN. DEPTH SMALL COLORADO EGG ROCK (OR APPROVED EQUAL) IN ALL PLANTING BED AREAS. ROCK SHALL BE PLACED ON DEWITT 5 OZ. LANDSCAPE FABRIC. ROCK IS AVAILABLE AT NORTH-RIDGE SAND, 6033 N. RIDGE ROAD, MAIZE, KANSAS.
- IF POSSIBLE, BASED ON TIME OF YEAR SITE IS READY FOR LANDSCAPING, PLANT TREES PRIOR TO ROUTING/INSTALLING IRRIGATION LINES AND SUSTAIN TEMPORARILY BY WATERING WITH IRR "GATOR" SLOW DRIP IRRIGATION BAGS OR BY HAND WATERING. FOLLOW TREE PLANTING WITH INSTALLATION OF IRRIGATION SYSTEM, THEN BY SODDING AND SEEDING (IF APPLICABLE).
- FESCUE SOD SHALL BE HARVESTED & PLACED BETWEEN THE DATES OF APRIL 1ST AND JUNE 15TH UNLESS OTHERWISE APPROVED BY THE OWNER'S REPRESENTATIVE. IT IS THE CONTRACTOR'S RESPONSIBILITY TO WATER ALL SOD UNTIL LANDSCAPE JOB IS COMPLETE.
- AREAS DENOTED AS 'SOD' SHALL BE PLANTED WITH THE FOLLOWING GRASS TYPE:  
SOD: KANSAS PREMIUM BLEND FESCUE
- ALL SOD AREAS SHALL BE INSTALLED AS FOLLOWS: AFTER FINAL GRADE IS ESTABLISHED AND ALL SOIL AREAS DRAIN AS INTENDED, AND ALL SURFACE IRREGULARITIES HAVE BEEN REMOVED, THOROUGHLY PREPARE SODBED BY TILLING TO A MINIMUM DEPTH OF 3" AND HARROWING. ROLL SOD FOLLOWING LAYING FOR GOOD SOD/SOIL CONTACT AND KEEP IN A MOIST (BUT NOT SATURATED) CONDITION FOR FIRST TWO WEEKS TO PROMOTE GOOD ROOTING. FERTILIZE WITH 1 LB. ACTUAL NITROGEN PER 1,000 S.F. AT TIME OF PLANTING.
- ALL LANDSCAPE AND TURF AREAS SHALL BE WATERED BY AN AUTOMATIC IRRIGATION SYSTEM. IRRIGATION SYSTEM SHALL BE EQUIPPED WITH A RAIN-SENSING DEVICE TO SHUT OFF THE SYSTEM DURING PERIODS OF ADEQUATE RAIN.
- COORDINATE LANDSCAPE PLANTING WITH IRRIGATION CONTRACTOR. THE TREE PLANTINGS SHALL BE IN PLACE OR STAKED BEFORE IRRIGATION LINE ROUTING BEGINS TO AVOID CONFLICTS. THE IRRIGATION SYSTEM SHALL BE COMPLETE AND FULLY FUNCTIONAL IN ALL LAWN AREAS BEFORE SOD/SEED IS PLACED.
- ALL PLANTS SHALL CONFORM TO ANSI Z60.1 FOR SIZE AND QUALITY STANDARDS.
- LABEL EACH PLANT WITH A SECURELY ATTACHED, WATERPROOF TAG BEARING LEGIBLE DESIGNATION OF BOTH BOTANICAL AND COMMON NAME. DO NOT REMOVE UNTIL AFTER PROVISIONAL ACCEPTANCE.
- SUBSTITUTION OF PLANT SPECIES FOR THOSE LISTED IN THE PLANT LIST IS NOT PERMISSIBLE. ONLY SIZE WILL BE CONSIDERED.
- ALL PLANTS MUST BE HEALTHY, VIGOROUS MATERIAL; FREE OF PEST AND DISEASES. ALL PLANTS MUST BE CONTAINER-GROWN OR BALLED AND BURLAPPED AS INDICATED IN THE PLANT LIST. ALL TREES SHALL BE STRAIGHT-TRUNKED, OR OF TYPICAL FORM TO THE SPECIES, FULL-HEADED AND MEET THE REQUIREMENTS AS SPECIFIED. ALL TREES MUST BE STAKED.
- STAKES AND GUYING SHALL BE REMOVED AT THE END OF ONE FULL GROWING SEASON.
- ALL PLANTS ARE SUBJECT TO THE APPROVAL OF THE LANDSCAPE ARCHITECT BEFORE, DURING, AND AFTER INSTALLATION. REJECTED PLANTS SHALL BE REMOVED IMMEDIATELY.
- ALL LANDSCAPE PLANTS SHALL BE GUARANTEED FOR ONE YEAR FOLLOWING INITIAL ACCEPTANCE. DEAD OR DEFICIENT PLANTINGS SHALL BE ACCEPTABLY REPLACED, IN PROPER PLANTING SEASON, ONE TIME AT NO COST TO THE OWNER. SOD AREAS MAY BE FINAL ACCEPTED AT TIME OF COMPLETION OF ESTABLISHMENT WITH NO FURTHER GUARANTEE REQUIRED.
- LANDSCAPE CONTRACTOR SHALL BE RESPONSIBLE FOR MAINTAINING, (INCLUDING WATERING AND MOWING), TURF AREAS UNTIL ACCEPTANCE OF THESE AREAS. WHEN READY, THE LANDSCAPE CONTRACTOR SHALL REQUEST INSPECTION OF ESTABLISHED SODDED/SEEDDED AREAS BY THE OWNER'S REPRESENTATIVE.
- TOPSOIL FOR ALL LANDSCAPE BEDS SHALL BE A MINIMUM OF EIGHTEEN INCHES (18") DEPTH. REFERENCE CIVIL GRADING PLAN AND ARCHITECTURAL DETAILS FOR INTENT TO MAINTAIN OFFSET BETWEEN BUILDING FINISHED FLOOR ELEVATION AND TOP OF GRADE/LANDSCAPING MATERIAL. DO NOT OVERFILL BEDS.
- INSTALL IRRIGATION SLEEVES IN THE LOCATIONS SHOWN ON THE PLANS. TWO SLEEVES ARE REQUIRED AT EACH LOCATION. (1) 1.5" AND (1) 4" PVC CLASS 200 SDR21. BOTH SHALL EXTEND 18" BEYOND THE BACK OF CURB OR SIDEWALK, BURIED 30" MINIMUM DEPTH, AND BE MARKED WITH A TEMPORARY T-POST MARKER AT EACH END.
- BARE SPOTS WITHIN THE SEEDDED AREAS SHALL BE RE-SEEDDED UNTIL A SATISFACTORY LAWN IS ESTABLISHED.

## PLANTER POT NOTES

MANUFACTURER: PLANTERS UNLIMITED  
MODEL: ROCCA BOWL  
SIZE: 50" DIAMETER x 17" HEIGHT  
MATERIAL: FIBERGLASS WITH 1/2" DRAINAGE HOLES  
COLOR: TO BE DETERMINED BY ARCHITECT

PLACE A 3" LAYER OF CLEAN WASHED GRAVEL IN THE BOTTOM OF PLANTER BEFORE ADDING THE PLANTING SOIL MIX. PLANTING SOIL MIX SHALL BE FERTILOME ULTIMATE POTTING MIX (OR APPROVED EQUAL).

## PLANT SCHEDULE

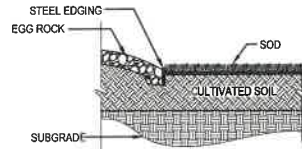
KEY	QTY	COMMON NAME	BOTANICAL NAME	SIZE & METHOD OF HANDLING	NOTES
<b>DECIDUOUS TREES</b>					
SHU	1	SHUMARD OAK	QUERCUS SHUMARDII	3" CAL / B&B	BRANCHING HT. 5' MIN.
ENG	1	ENGLISH OAK 'CRIMSON SPIRE'	QUERCUS x BMLANDORUM 'CRIMSCHMIDT'	2.5" CAL / B&B	
<b>ORNAMENTAL TREES</b>					
S-HA	2	SHANTUNG MAPLE	ACER TRUNCATUM	2" CAL / B&B	
<b>EVERGREEN TREES</b>					
ARB	5	EMERALD GREEN ARBORVITAE	THUJA OCCIDENTALIS 'SMARAGD'	7'-8' MIN. HT.	
TAY	7	TAYLOR JUNIPER	JUNIPERUS VIRGINIANA 'TAYLOR'	7'-8' MIN. HT.	
<b>DECIDUOUS SHRUBS</b>					
BRN	21	DWARF BURNING BUSH	EUONYMUS ALATUS 'COMPACTUS'	#3 CONT.	
<b>EVERGREEN SHRUBS</b>					
YUC	6	RED YUCCA	HESPERALOE PARVIFLORA 'BRAKE LIGHTS'	#3 CONT.	
CGY	29	'COLOR GUARD' YUCCA	YUCCA FILAMENTOSA 'COLOR GUARD'	#3 CONT.	
SEA	39	'SEA GREEN' JUNIPER	JUNIPERUS x PFITZERIANA 'SEA GREEN'	#3 CONT.	
<b>ORNAMENTAL GRASSES</b>					
NWS	21	'NORTHWIND' SWITCHGRASS	PANICUM VIRGATUM 'NORTHWIND'	#2 CONT.	
BAB	32	'BLONDE AMBITION' BLUE GRAMA	BOUTELOUA GRACILLIS 'BLONDE AMBITION'	#1 CONT.	
FRG	30	FEATHER REED GRASS	CALAMAGROSTIS x ACUTIFLORA 'KARL FOERSTER'	#2 CONT.	
FTN	28	DWARF FOUNTAIN GRASS	PENNISETUM ALOPECUROIDES 'HAMEL'	#1 CONT.	
LYM	33	'BLUE DUNE' LYME GRASS	ELYMUS ARENARIUS 'BLUE DUNE'	#2 CONT.	
SSG	8	'SHENANDOAH' SWITCHGRASS	PANICUM VIRGATUM 'SHENANDOAH'	#2 CONT.	
<b>PERENNIALS</b>					
RUS	23	RUSSIAN SAGE	PEROVSKIA ATRIPLICIFOLIA	#1 CONT.	
SUM	8	'SUM AND SUBSTANCE' HOSTA	HOSTA x 'SUM AND SUBSTANCE'	#1 CONT.	
<b>TURF GRASS</b>					
SOD	260 SF	FESCUE: GARDN WISE 'KANSAS PREMIUM BLEND'			SOD
SEED	27,500 SF	FESCUE: GARDN WISE 'KANSAS PREMIUM BLEND'		SEED AT 10 LBS. / 1,000 SF	SEED

\* PLANTER POT SHALL BE PLANTED WITH FIVE (5) BLUE DUNE LYME GRASS (ACCOUNTED FOR IN ABOVE SCHEDULE).

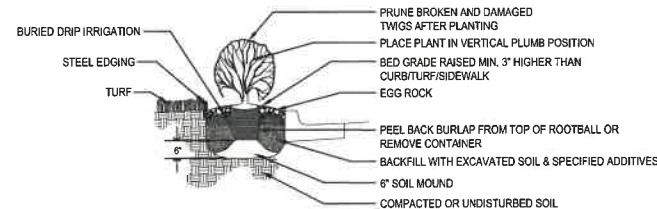
## LANDSCAPE ORDINANCE CALCULATIONS

FRONTAGE OF SITE = 272'. DEPTH OF LOT = 229'  
 SQUARE FOOTAGE FACTOR = 10 SQ. FT. PER LINEAR FOOT  
 REQUIRED LANDSCAPED STREET YARD = 272 x 10 = 2,720 SQ. FT.  
 LANDSCAPED STREET YARD PROVIDED = 4,079 SQ. FT.  
 STREET YARD TREES REQUIRED = 2,720/500 = 6 TREES  
 TREES PROVIDED = 4 TREES & 97 SHRUBS (2) = 6 TREE EQUIVALENT  
 PARKING STALLS PROVIDED = 37 STALLS  
 PARKING LOT TREES REQUIRED = 37/20 = 2 TREES  
 PARKING LOT TREES PROVIDED = 4 TREES

NOTE: ORNAMENTAL TREES ARE PLACED IN PARKING ISLANDS DUE TO EXISTING OVERHEAD POWER LINES.

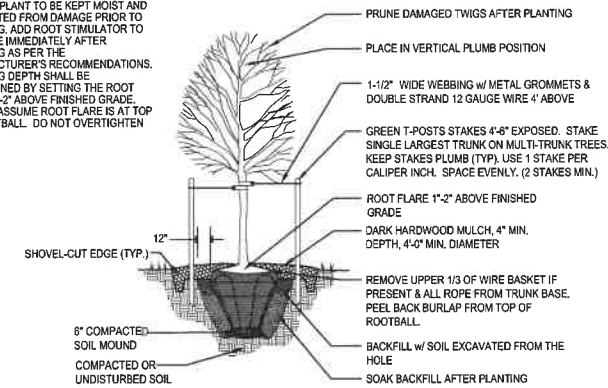


**BED EDGING AT TURF DETAIL**  
NOT TO SCALE



**SHRUB PLANTING DETAIL**  
NOT TO SCALE

NOTES:  
 BALL OF PLANT TO BE KEPT MOIST AND PROTECTED FROM DAMAGE PRIOR TO PLANTING. ADD ROOT STIMULATOR TO SURFACE IMMEDIATELY AFTER PLANTING AS PER THE MANUFACTURER'S RECOMMENDATIONS. PLANTING DEPTH SHALL BE DETERMINED BY SETTING THE ROOT FLARE 1"-2" ABOVE FINISHED GRADE. DO NOT ASSUME ROOT FLARE IS AT TOP OF ROOTBALL. DO NOT OVERTIGHTEN GUY.



**TREE PLANTING IN TURF AREA DETAIL**  
NOT TO SCALE

SAVED 9/30/2025 8:19:55 AM BY RYAN OTT  
 PLOTTED 9/30/2025 8:23:12 AM BY RYAN OTT  
 C:\D:\CADD\DWG\PROJECTS\125652-200\COMMUNITY NATIONAL BANK 25 GREENWICH PROJECT FILES\DESIGN WORKING MODELS\PECS\125652-200-LP102 LANDSCAPE DETAILS.DWG

FOR MARCO USE ONLY



ALL WORK SHOWN ON THIS DRAWING IS THE EXCLUSIVE PROPERTY OF HUTTON DESIGN + BUILD. NO PART OF THIS DRAWING OR ANY INFORMATION HEREON IS TO BE REPRODUCED OR TRANSMITTED IN ANY FORM OR BY ANY MEANS, ELECTRONIC OR MECHANICAL, INCLUDING PHOTOCOPYING, RECORDING, OR BY ANY INFORMATION STORAGE AND RETRIEVAL SYSTEM.

Project Number: 25223  
**COMMUNITY NATIONAL BANK & TRUST**  
**WICHITA HEADQUARTERS & BANKING CENTER**  
 1100X E. 28th St. N.  
 Wichita, KS 67226

Issue: BID & PERMIT  
 Date: 2025.09.04

#	Description	Date

PROFESSIONAL ENGINEERING CONSULTANTS, P.A.  
 200 S. GARDNER  
 WICHITA, KS 67202  
 316.262.0581 www.pec.com  
 PEC PROJECT NUMBER: 25223-007



**L1.2**  
 LANDSCAPE DETAILS