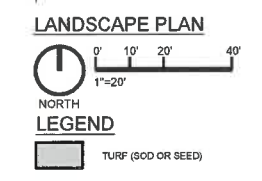
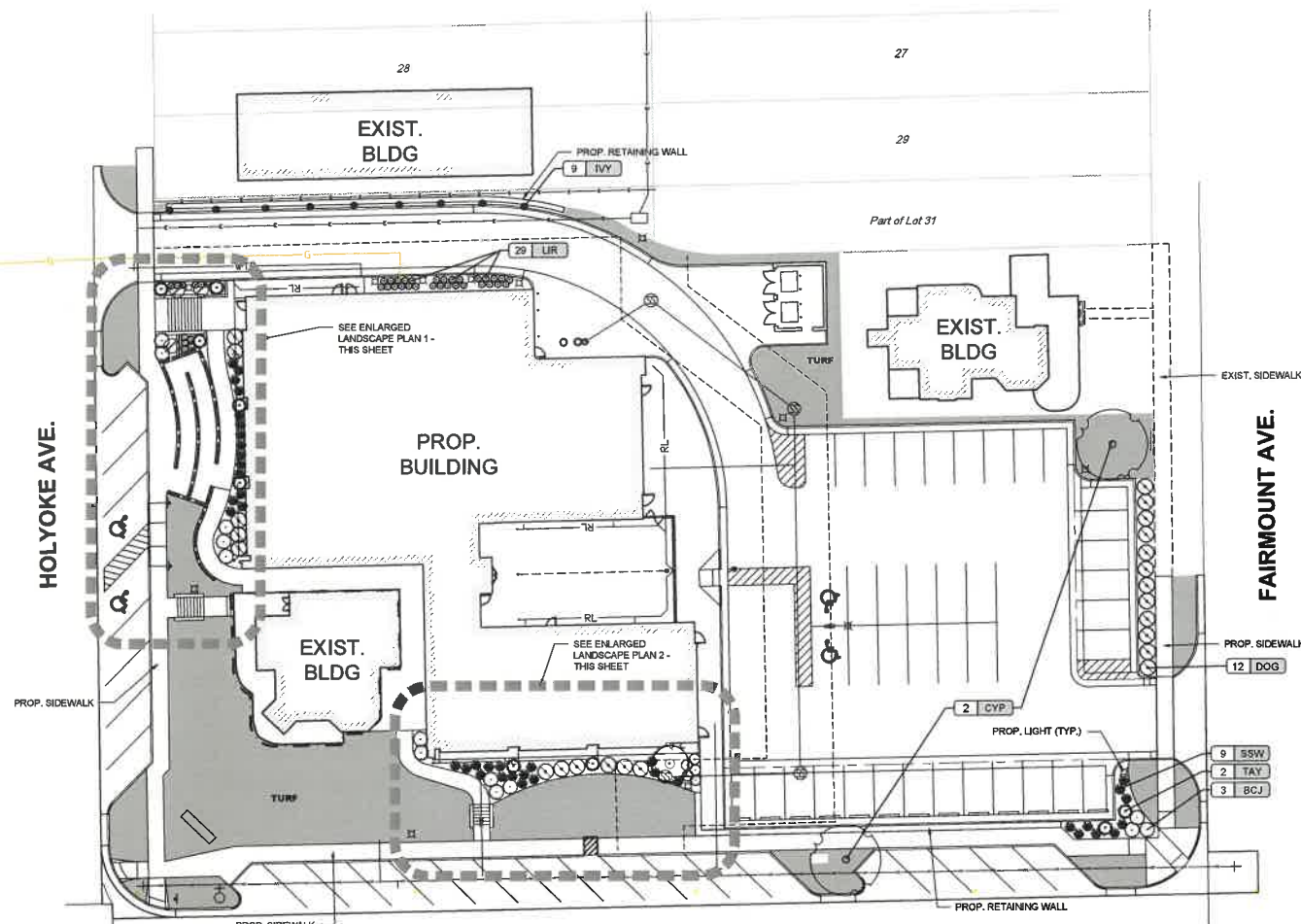
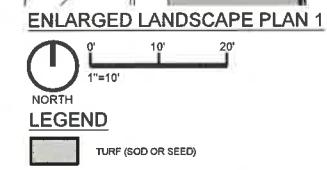
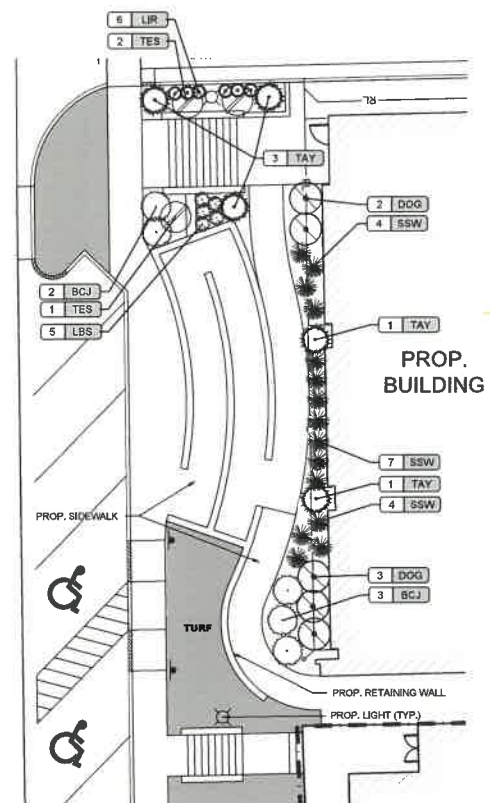


FOR MARCO USE ONLY

GENERAL LANDSCAPE NOTES:

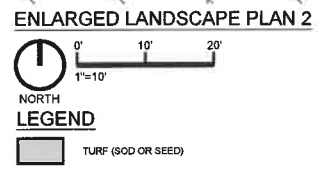
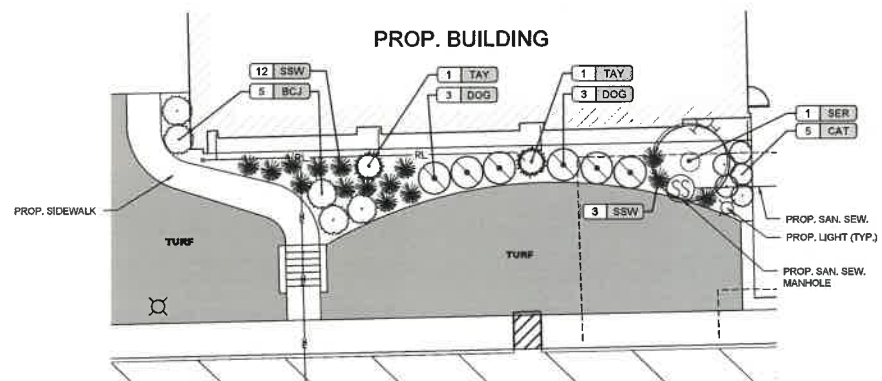
- CONTRACTOR SHALL MAKE THEMSELVES FAMILIAR WITH ALL APPLICABLE SPECIFICATIONS RELATED TO THE LANDSCAPE AND IRRIGATION.
- LANDSCAPE CONTRACTOR IS TO VERIFY THE LOCATION OF ALL UNDERGROUND UTILITIES (INCLUDING THOSE INDICATED ON THE PLAN) PRIOR TO INSTALLATION OF PLANT MATERIAL. UTILITIES CAN BE FLAGGED BY CALLING 811 OR 1-800-368-7233, OR ONLINE AT www.kansasonecall.com. DAMAGE TO UTILITIES SHALL BE AVOIDED DURING THE COURSE OF WORK. THE LANDSCAPE CONTRACTOR IS RESPONSIBLE FOR REPAIRING ANY AND ALL DAMAGE TO UTILITIES, STRUCTURES, SITE APPURTENANCES, ETC. WHICH OCCUR AS A RESULT OF THE LANDSCAPE CONSTRUCTION.
- LANDSCAPE CONTRACTOR SHALL COORDINATE WITH THE MASS GRADING CONTRACTOR TO INSURE THEY THOROUGHLY RIP AND ALLEVATE ALL COMPACTED SOILS FROM THEIR HAULING AND PLACEMENT OPERATIONS.
- ALL WATER REQUIRED FOR LANDSCAPE OPERATIONS AND FOR ESTABLISHING LANDSCAPE ON THIS SITE WILL BE PROVIDED BY THE OWNER FROM ON-SITE SOURCES AND SUPPLIED TO THE LANDSCAPE CONTRACTOR AT NO CHARGE.
- PLANTING DATES FOR PLANT MATERIAL SHALL BE DURING THE MONTHS BETWEEN FEB. 15TH AND MAY 31ST OR SEPT. 15TH AND DEC. 15. PLANTING SHALL ONLY BE CONDUCTED WHEN THE GROUND IS NOT FROZEN, SNOW-COVERED, OR IN AN OTHERWISE UNSUITABLE CONDITION FOR PLANTING. DEVIATION FROM THE ABOVE PLANTING DATES WILL ONLY BE PERMITTED WITH APPROVAL FROM THE OWNER'S REPRESENTATIVE.
- MULCHED LANDSCAPE BED EDGES SHALL BE LINED WITH PRO-STEEL EDGING (OR APPROVED EQUAL).
- SOIL GRADES ADJACENT TO BUILDINGS SHALL BE SIX (6) INCHES LOWER THAN BUILDING FINISH FLOOR ELEVATION. MULCH SHALL BE A MINIMUM OF 3" LOWER THAN FINISH FLOOR ELEVATION.
- IF POSSIBLE, BASED ON TIME OF YEAR SITE IS READY FOR LANDSCAPING, PLANT TREES PRIOR TO ROUTING/INSTALLING IRRIGATION LINES AND SUSTAIN TEMPORARILY BY WATERING WITH IRRIGATOR SLOW DRIP IRRIGATION BAGS OR BY HAND WATERING. FOLLOW TREE PLANTING WITH INSTALLATION OF IRRIGATION SYSTEM, THEN BY SODDING AND SEEDING (IF APPLICABLE).
- COORDINATE LANDSCAPE PLANTING WITH IRRIGATION CONTRACTOR. THE TREE PLANTINGS SHALL BE IN PLACE OR STAKED BEFORE IRRIGATION LINE ROUTING BEGINS TO AVOID CONFLICTS. THE IRRIGATION SYSTEM SHALL BE COMPLETE AND FULLY FUNCTIONAL IN ALL LAWN AREAS BEFORE SOD IS PLACED.
- ALL PLANTS SHALL CONFORM TO ANSI Z60.1 FOR SIZE AND QUALITY STANDARDS.
- EACH PLANT WITH A SECURELY ATTACHED, WATERPROOF TAG BEARING LEGIBLE DESIGNATION OF BOTH BOTANICAL AND COMMON NAME. DO NOT REMOVE UNTIL AFTER PROVISIONAL ACCEPTANCE.
- SUBSTITUTION OF PLANT SPECIES FOR THOSE LISTED IN THE PLANT LIST IS NOT PERMISSIBLE. ONLY SIZE WILL BE CONSIDERED.
- STAKES AND GLUING SHALL BE REMOVED AT THE END OF ONE FULL GROWING SEASON.
- ALL LANDSCAPE PLANTS SHALL BE GUARANTEED FOR ONE YEAR FOLLOWING INITIAL ACCEPTANCE. DEAD OR DEFICIENT PLANTINGS SHALL BE ACCEPTABLY REPLACED. IN PROPER PLANTING SEASON, ONE TIME AT NO COST TO THE OWNER. SOD AND SEED AREAS MAY BE FINAL ACCEPTED AT TIME OF COMPLETION OF ESTABLISHMENT. (SEE NOTES ABOVE), WITH NO FURTHER GUARANTEE REQUIRED.



PLANT SCHEDULE

KEY	QTY	COMMON NAME	BOTANICAL NAME	SIZE & METHOD OF HANDLING
DECIDUOUS TREES				
CYP	2	SHAWNEE BRAVE BALD CYPRESS	TAXODIUM DISTICHUM 'SHAWNEE BRAVE'	2.5" CAL / B&B
SER	1	AUTUMN BRILLIANCE SERVICEBERRY	AMELANCHIER x GRANDIFLORA 'AUTUMN BRILLIANCE'	CLUMP - 6' HT MIN.
ORNAMENTAL GRASSES / SHRUBS				
SSW	39	SHENANDOAH SMITCH GRASS	Panicum VIRGATUM 'SHENANDOAH'	#3 CONT.
LBS	5	STANDING OVATION LITTLE BLUESTEM	SCHIZACHYRIUM SCOPARILUM 'STANDING OVATION'	#1 CONT.
DECIDUOUS SHRUBS				
TES	3	TIGER EYES SUMAC	RHUS TYPHINA 'TIGER EYES'	#5 CONT.
DOG	23	IVORY HALO DOGWOOD	CORNUS ALBA 'BAIKHALO'	#5 CONT.
EVERGREEN TREES				
TAY	9	TAYLOR JUNIPER	JUNIPERUS VIRGINIANA	6' HT. MIN.
GROUNDCOVER / PERENNIALS				
LR	35	BIG BLUE LIRIOPE	LIRIOPE MUSCARI 'BIG BLUE'	#1 CONT.
IVY	9	BOSTON IVY	PARthenocissus TRICUSPIDATA	#1 CONT.
CAT	5	WALKERS LOW GATMINT	HEPETA RACEMOSA 'WALKERS LOW'	#1 CONT.
BCJ	13	BLUE CHIP JUNIPER	JUNIPERUS HORIZONTALIS 'BLUE CHIP'	#3 CONT.
TURF	925 SY	FESCUE TURF GRASS SEED OR SOD		

NOTE: CONTRACTOR SHALL ON SOD OR SEED DISTURBED AREAS THAT DO NOT RECEIVE HARDSCAPE OR OTHER LANDSCAPE TREATMENTS



LANDSCAPE CODE CALCULATIONS

LANDSCAPE STREET YARD REQUIRED:	300' E. 16TH STREET N.L.
1.15 REQUIRED SQUARE FOOTAGE FACTOR	4,500 SF LANDSCAPE STREET YARD REQUIRED
1.50' HOLYOKE	2,250 SF REQUIRED SQUARE FOOTAGE FACTOR
1.50' HOLYOKE	2,250 SF LANDSCAPE STREET YARD REQUIRED
5,750 SF = TOTAL LANDSCAPE STREET YARD REQUIRED	
LANDSCAPE STREET YARD PROVIDED:	6,695' TOTAL SQ. FT. PROVIDED
STREET YARD TREES REQUIRED:	5,750 / 500 = 12 STREET YARD TREES REQUIRED (UP TO 4 CAN BE SUBSTITUTED WITH SHRUBS)
TOTAL STREET YARD TREES PROVIDED:	2 SWIDE TREES + 1 ORNAMENTAL TREE + 9 EVERGREEN TREES + 40 SHRUBS = 115 TREES TOTAL
PARKING LOT SCREENING:	PROVIDED ON EAST SIDE OF PARKING LOT ADJACENT TO FAIRMOUNT AVE.



ALL WORK SHOWN ON THIS DIFFERENCE SHEET IS THE PROPERTY OF MARCO. THE CONTRACTOR SHALL BE RESPONSIBLE FOR THE CORRECT REPRESENTATION OF THE WORK SHOWN ON THIS DIFFERENCE SHEET.

Project Number: 245113
STORYTIME VILLAGE COMMUNITY LITERACY CENTER
 1704 N HOLYOKE WICHITA, KS 67208

Issue: FOR CONSTRUCTION
 Date: 11.07.25

REVISIONS
 Description Date

LANDSCAPE PLAN
 APPROVED 11/14/25 BY [Signature]
 PUD#78

L1.0
 LANDSCAPE PLAN