

RECOMMENDATION FROM MAPC TO BOARD OF CITY COMMISSIONERS

V-1230 - VACATION OF A PORTION OF THE PLATTED 15-FOOT BUILDING SETBACK ON LOT 7, BLOCK 6, HEDGECLIFF ADDITION, WICHITA, KANSAS, LOCATED ON THE EAST SIDE OF LINDEN, IN AN AREA SOUTH OF CHERRY CREEK DRIVE.

The Planning Commission recommends approval subject to all proceedings being without cost to the City, County, or any utility company.

Bayouth moved, Moore seconded and it carried unanimously. Banzer, Chisholm and Goebel were absent. Gardner not yet present. (11-3-83)

ACTION: Approve the vacation request as recommended by the Metropolitan Area Planning Commission and place the ordinance on first reading.

VACATION CASE DATA

Legal Description: The east 1 1/2 feet of the platted 15-foot building setback from Linden on Lot 7, Block 6, Hedgecliff Addition, Wichita, Kansas.

General Location: East side of Linden in an area south of Cherry Creek Drive.

Applicant: Bradley A. Pistotnik  
2134 Linden Court, 67207

Protestors (If any): None

(98170) (Published in The Daily Record 11 / 28, 1983)

ORDINANCE NO. 38-574

AN ORDINANCE VACATING A PORTION OF THE PLATTED BUILDING SETBACK FROM LINDEN ON LOT 7, BLOCK 6, HEDGECLIFF ADDITION, WICHITA, KANSAS.

BE IT ORDAINED BY THE GOVERNING BODY OF THE CITY OF WICHITA, KANSAS:

SECTION 1. That the portion of platted building setback described as follows, to-wit:

The east 1 1/2 feet of the platted 15-foot building setback from Linden on Lot 7, Block 6, Hedgecliff Addition, Wichita, Kansas; (MAPC NO. V-1230);

be and the same is hereby vacated in accordance with K.S.A. 13-443, subject, however, to the concurrence in such vacation by the Board of County Commissioners as by law provided.

SECTION 2. That it is hereby recommended to the Board of County Commissioners of Sedgwick County, Kansas, that said above described building setback be vacated by said Board in case a proper petition is filed under the provisions of K.S.A. 12-504, 12-505 and K.S.A. 12-506.

SECTION 3. That this Ordinance shall be in force and take effect from and after its passage and publication once in the official city paper.

PASSED AND APPROVED at Wichita, Kansas this 22<sup>nd</sup> day of November, 1983.

ATTEST:

Margalee Wright, Mayor

Donald C. Gisick, City Clerk

(SEAL)

V-1230

WILLIAM L. KROGER, L.S.  
JOHN E. LUNDBLAD, L.S.  
N. BRENT WOOTEN, P.E.

# BAUGHMAN COMPANY, P.A.

SURVEYING & ENGINEERING  
316-262-7271 • 330 LAURA • WICHITA, KANSAS 67211

State of Kansas )  
                  ) SS  
County of Sedgwick)

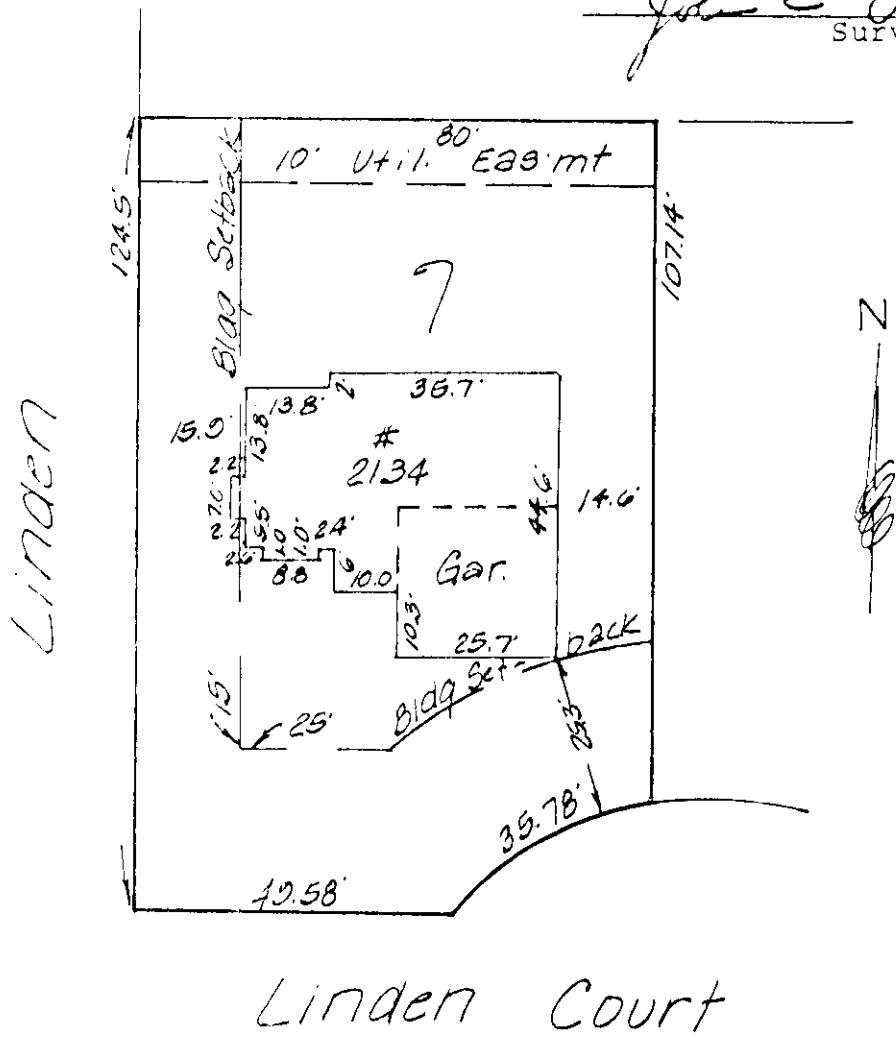
October 7, 1983

We, Baughman Company, P.A., Surveyors in aforesaid county and state do hereby certify that we did on this 7th day of October, 1983, survey Lot 7, Block 6, Hedgecliff Addition, Wichita, Kansas.

On said lot is house No. 2134 with an attached garage which is in the clear of all boundary lines. There are no encroachments on said lot by buildings on the adjacent lots.

The accompanying plat is a true and correct exhibit of said survey for mortgage title insurance.

*John E. Lundblad*  
Surveyor



Linden Court