

RECOMMENDATION FROM MAPC TO BOARD OF CITY COMMISSIONERS

V-1212 - VACATION OF CERTAIN UTILITY EASEMENTS AND ALLEYS IN BLOCKS 1 AND 3, PAYNE'S PARK ADDITION TO WICHITA, KANSAS.

The Planning Commission recommends approval subject to all proceedings being without cost to the County, or any utility company.

Bayouth moved, Hansen seconded and it carried unanimously. Gardner and Goebel were absent. (9-22-83).

ACTION: Approve the vacation request as recommended by the Metropolitan Area Planning Commission and place the ordinance on its first reading.

VACATION CASE DATA

Legal Description: The five-foot utility easements as platted on the rear of all lots in Block 1 and the rear of Lots 1 thru 12 in Block 3, Payne's Park Addition to Wichita, Kansas; AND the alley on the rear six feet of the east ten feet of Lot 2 and the rear six feet of Lots 3 thru 16 in Block 1, and the alley on the rear six feet of Lots 1 thru 12 in Block 3, all in Payne's Park Addition to Wichita, Kansas, said alleys having been dedicated in 1921, as per instrument recorded in Book 340 at Page 1 in the Sedgwick County Register of Deeds Office;

General Location: east of Sycamore in an area north of Maple.

Applicant: City of Wichita and Metropolitan Baptist Church, 455 N. Main.

Protestors (If any): None.

(97992) (Published in The Daily Record OCTOBER 14, 1983)

ORDINANCE NO. 38-529

AN ORDINANCE VACATING CERTAIN UTILITY EASEMENTS
AND ALLEYS IN BLOCKS 1 AND 3, PAYNE'S PARK ADDITION
TO WICHITA, KANSAS.

BE IT ORDAINED BY THE GOVERNING BODY OF THE
CITY OF WICHITA, KANSAS:

SECTION 1. That the utility easements and alleys described
as follows, to-wit:

The five-foot utility easements as platted
on the rear of all lots in Block 1 and the
rear of Lots 1 thru 12 in Block 3, Payne's
Park Addition to Wichita, Kansas; AND
The alley on the rear six feet of the east
ten feet of Lot 2 and the rear six feet of
Lots 3 thru 16 in Block 1, and the alley on
the rear six feet of Lots 1 thru 12 in Block
3, all in Payne's Park Addition to Wichita,
Kansas, said alleys having been dedicated
in 1921, as per instrument recorded in Book
340 at Page 1 in the Sedgwick County Register
of Deeds Office; (MAPC No. V-1212);

be and the same is hereby vacated in accordance with K.S.A. 13-443,
subject, however, to the concurrence in such vacation by the Board
of County Commissioners as by law provided.

SECTION 2. That it is hereby recommended to the Board of
County Commissioners of Sedgwick County, Kansas, that said above
described easements and alleys be vacated by said Board in case
a proper petition is filed under the provisions of K.S.A. 12-504,
12-505 and K.S.A. 12-506.

SECTION 3. That this Ordinance shall be in force and
take effect from and after its passage and publication once in
the official city paper.

PASSED AND APPROVED at Wichita, Kansas this 11TH
day of OCTOBER, 1983.

ATTEST:

Margalee Wright, Mayor

Donald C. Gisick, City Clerk

(SEAL)

92	94	98	100
124			

81	83	97	99

DOUGLAS

82	84	98	100

81	83	97	99

TEXAS AVE.

82	84	88

1
RESURVEY
5

OAK

82	84	88

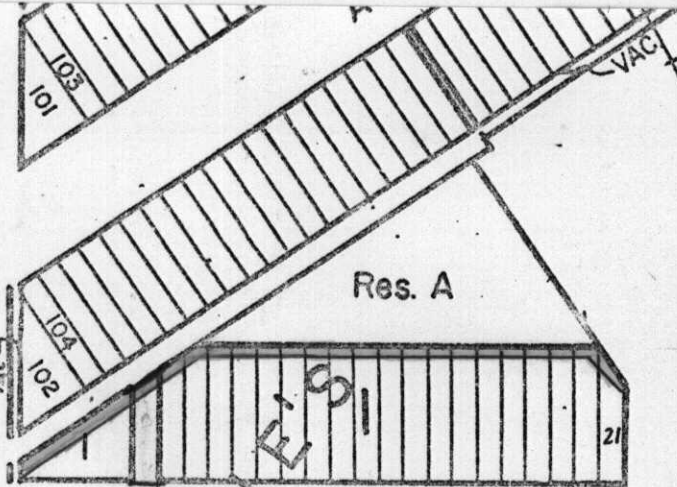
100	91	93	97	99

BURTON AVE.

35	34

35	34

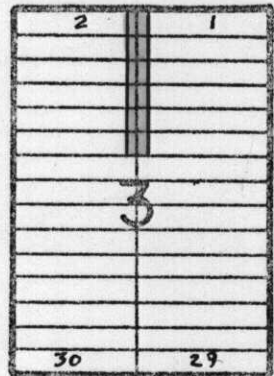
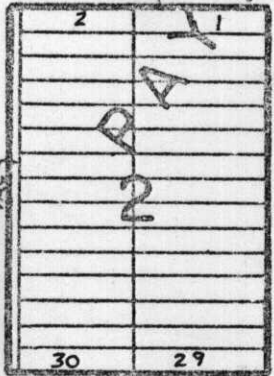
SYCAMORE



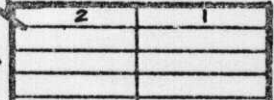
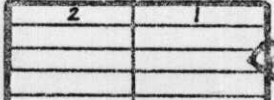
Res. A

N PATM E 91

VACATED B6C 7-13-83



VACATED B6C 7-13-83



VACATED B6C 7-13-83



N 101

MCLEAN BLVD.