

RECOMMENDATION FROM MAPC TO BOARD OF CITY COMMISSIONERS

V-1204 - VACATION OF A PORTION OF THE UTILITY AND DRAINAGE EASEMENT ON LOT 14, P & L 2ND ADDITION.

The Planning Commission recommends approval subject to:

1. Any relocation or reconstruction of utilities necessitated by this vacation shall be at the sole expense of the applicant.
2. All proceedings shall be without cost to the City, County, or any utility company.

Gardner moved, Parsons seconded and it carried unanimously. Goebel was absent. Moore not yet present. One vacancy. (8-11-83)

ACTION:

Approve the vacation request as recommended by the Metropolitan Area Planning Commission and place the ordinance on first reading.

VACATION CASE DATA

Legal Description: The east 10 feet of the west 30 feet of Lot 14, P & L 2nd Addition, Wichita, Kansas, except the north 35 feet thereof.

General Location: north of Navajo Lane in an area east of Hillside, if extended from the south.

Applicant: Kenneth D. King, et. al.
3235 Burtler, 67216

Protestors (If any): None

Attachments: Vacation Ordinance

(97839) (Published in The Daily Record Sept 2, 1983)

ORDINANCE NO. 38-497

AN ORDINANCE VACATING A PORTION OF THE PLATTED DRAINAGE AND UTILITY EASEMENT ON LOT 14, P & L 2ND ADDITION, WICHITA, KANSAS.

BE IT ORDAINED BY THE GOVERNING BODY OF THE CITY OF WICHITA, KANSAS:

SECTION 1. That the portion of the platted drainage and utility easement described as follows, to-wit:

The east ten feet of the west thirty feet of Lot 14, P & L 2nd Addition, Wichita, Kansas, except the north thirty-five feet thereof; (MAPC NO. V-1204);

be and the same is hereby vacated in accordance with K.S.A. 13-443, subject, however, to the concurrence in such vacation by the Board of County Commissioners as by law provided.

SECTION 2. That it is hereby recommended to the Board of County Commissioners of Sedgwick County, Kansas, that said above described easement be vacated by said Board in case a proper petition is filed under the provisions of K.S.A. 12-504, 12-505 and K.S.A. 12-506.

SECTION 3. That this Ordinance shall be in force and take effect from and after its passage and publication once in the official city paper.

PASSED AND APPROVED at Wichita, Kansas this 30th day of August, 1983.

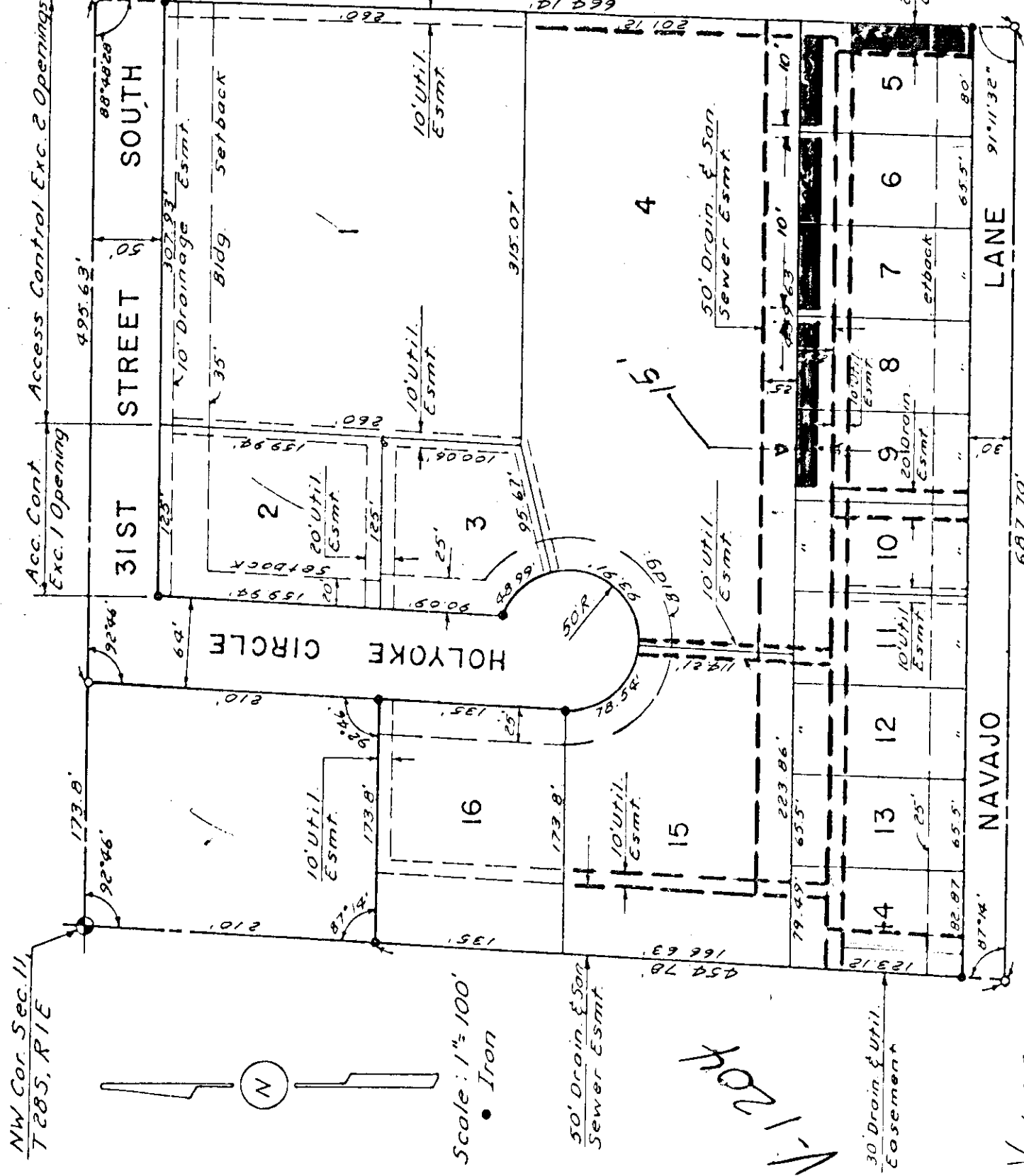
ATTEST:

Margalee Wright, Mayor

Donald C. Gisick, City Clerk

(SEAL)

FILE



NW Cor. Sec. 11
T 28S, R 1E



Scale: 1" = 100'
• Iron

50' Drain & Sewer
Easement

30' Drain & Util.
Easement

V-11204

V-1117

Acc. Cont
Exc. 1 Opening

31ST STREET SOUTH

HOLYOKE CIRCLE

NAVAJO LANE

495.63'

88°48'28"

307.93'

10' Drainage Easmt.

35' Bldg. Setback

20' Util. Easmt.

25'

125'

159.94'

100.05'

95.67'

50.09'

88.99'

16.54'

112.21'

112.21'

161.81'

10' Util. Easmt.

10' Util. Easmt.

10' Util. Easmt.

10' Util. Easmt.

10' Util. Easmt.

10' Util. Easmt.

10' Util. Easmt.

10' Util. Easmt.

10' Util. Easmt.

10' Util. Easmt.

10' Util. Easmt.

10' Util. Easmt.

10' Util. Easmt.

92°46'

92°46'

92°46'

92°46'

92°46'

92°46'

92°46'

92°46'

92°46'

92°46'

92°46'

92°46'

92°46'

92°46'

92°46'

92°46'

92°46'

92°46'

92°46'

92°46'

92°46'

92°46'

92°46'

92°46'

92°46'

92°46'

92°46'

92°46'

92°46'

92°46'

173.8'

173.8'

173.8'

173.8'

173.8'

173.8'

173.8'

173.8'

173.8'

173.8'

173.8'

173.8'

173.8'

173.8'

173.8'

173.8'

173.8'

173.8'

173.8'

173.8'

173.8'

173.8'

173.8'

173.8'

173.8'

173.8'

173.8'

173.8'

173.8'

173.8'

10' Util. Easmt.

10' Util. Easmt.

10' Util. Easmt.

10' Util. Easmt.

10' Util. Easmt.

10' Util. Easmt.

10' Util. Easmt.

10' Util. Easmt.

10' Util. Easmt.

10' Util. Easmt.

10' Util. Easmt.

10' Util. Easmt.

10' Util. Easmt.

10' Util. Easmt.

10' Util. Easmt.

10' Util. Easmt.

10' Util. Easmt.

10' Util. Easmt.

10' Util. Easmt.

10' Util. Easmt.

10' Util. Easmt.

10' Util. Easmt.

10' Util. Easmt.

10' Util. Easmt.

10' Util. Easmt.

10' Util. Easmt.

10' Util. Easmt.

10' Util. Easmt.

10' Util. Easmt.

10' Util. Easmt.

173.8'

173.8'

173.8'

173.8'

173.8'

173.8'

173.8'

173.8'

173.8'

173.8'

173.8'

173.8'

173.8'

173.8'

173.8'

173.8'

173.8'

173.8'

173.8'

173.8'

173.8'

173.8'

173.8'

173.8'

173.8'

173.8'

173.8'

173.8'

173.8'

173.8'

10' Util. Easmt.

10' Util. Easmt.

10' Util. Easmt.

10' Util. Easmt.

10' Util. Easmt.

10' Util. Easmt.

10' Util. Easmt.

10' Util. Easmt.

10' Util. Easmt.

10' Util. Easmt.

10' Util. Easmt.

10' Util. Easmt.

10' Util. Easmt.

10' Util. Easmt.

10' Util. Easmt.

10' Util. Easmt.

10' Util. Easmt.

10' Util. Easmt.

10' Util. Easmt.

10' Util. Easmt.

10' Util. Easmt.

10' Util. Easmt.

10' Util. Easmt.

10' Util. Easmt.

10' Util. Easmt.

10' Util. Easmt.

10' Util. Easmt.

10' Util. Easmt.

10' Util. Easmt.

10' Util. Easmt.

173.8'

173.8'

173.8'

173.8'

173.8'

173.8'

173.8'

173.8'

173.8'

173.8'

173.8'

173.8'

173.8'

173.8'

173.8'

173.8'

173.8'

173.8'

173.8'

173.8'

173.8'

173.8'

173.8'

173.8'

173.8'

173.8'

173.8'

173.8'

173.8'

173.8'

10' Util. Easmt.

10' Util. Easmt.

10' Util. Easmt.

10' Util. Easmt.

10' Util. Easmt.

10' Util. Easmt.

10' Util. Easmt.

10' Util. Easmt.

10' Util. Easmt.

10' Util. Easmt.

10' Util. Easmt.

10' Util. Easmt.

10' Util. Easmt.

10' Util. Easmt.

10' Util. Easmt.

10' Util. Easmt.

10' Util. Easmt.

10' Util. Easmt.

10' Util. Easmt.

10' Util. Easmt.

10' Util. Easmt.

10' Util. Easmt.

10' Util. Easmt.

10' Util. Easmt.

10' Util. Easmt.

10' Util. Easmt.

10' Util. Easmt.

10' Util. Easmt.

10' Util. Easmt.

10' Util. Easmt.

173.8'

173.8'

173.8'

173.8'

173.8'

173.8'

173.8'

173.8'

173.8'

173.8'

173.8'

173.8'

173.8'

173.8'

173.8'

173.8'

173.8'

173.8'

173.8'

173.8'

173.8'

173.8'

173.8'

173.8'

173.8'

173.8'

173.8'

173.8'

173.8'

173.8'

10' Util. Easmt.

10' Util. Easmt.

10' Util. Easmt.

10' Util. Easmt.

10' Util. Easmt.

10' Util. Easmt.

10' Util. Easmt.

10' Util. Easmt.

10' Util. Easmt.

10' Util. Easmt