

RECOMMENDATION FROM MAPC TO BOARD OF CITY COMMISSIONERS

V-1202 - VACATION OF A PORTION OF A UTILITY EASEMENT ON LOT 15, BLOCK B, McEWEN
FOURTH ADDITION, WICHITA, SEDGWICK COUNTY, KANSAS.

The Planning Commission recommends approval subject to:

1. Any relocation or reconstruction of utilities necessitated by this vacation shall be at the sole expense of the applicant.
2. All proceedings shall be without cost to the City, County, or any utility company.

Gardner moved, Goebel seconded and it carried unanimously. Chisholm and Hansen were absent. Moore not yet present. One vacancy. (7-28-83)

ACTION: Approve the vacation request as recommended by the Metropolitan Area Planning Commission and place the ordinance on first reading.

VACATION CASE DATA

Legal Description: The southerly 15 feet of the 10 ft. x 25 ft. stub utility easement platted on the rear of Lot 15, Block B, McEwen Fourth Addition, Wichita, Sedgwick County, Kansas.

General Location: north of Farmstead in an area east of Kevin.

Applicant: Andrew Pickens, etux
1137 Farmstead, 67208

Protestors (If any): None

Attachments: Vacation Ordinance

(97842) Published in The Daily Record Sept 2, 1983)

ORDINANCE NO. 38-495

AN ORDINANCE VACATING A PORTION OF A UTILITY EASEMENT ON LOT 15, BLOCK B, McEWEN FOURTH ADDITION, WICHITA, SEDGWICK COUNTY, KANSAS.

BE IT ORDAINED BY THE GOVERNING BODY OF THE CITY OF WICHITA, KANSAS:

SECTION 1. That the utility easement described as follows, to-wit:

The southerly 15 feet of the 10 ft. x 25 ft. stub utility easement platted on the rear of Lot 15, Block B, McEwen Fourth Addition, Wichita, Sedgwick County, Kansas; (MAPC NO. V-1202);

be and the same is hereby vacated in accordance with K.S.A. 13-443, subject, however, to the concurrence in such vacation by the Board of County Commissioners as by law provided.

SECTION 2. That it is hereby recommended to the Board of County Commissioners of Sedgwick County, Kansas, that said above described easement be vacated by said Board in case a proper petition is filed under the provisions of K.S.A. 12-504, 12-505 and K.S.A. 12-506.

SECTION 3. That this Ordinance shall be in force and take effect from and after its passage and publication once in the official city paper.

PASSED AND APPROVED at Wichita, Kansas this 30th day of AUGUST, 1983.

ATTEST:

Margalee Wright, Mayor

Donald C. Gisick, City Clerk

(SEAL)

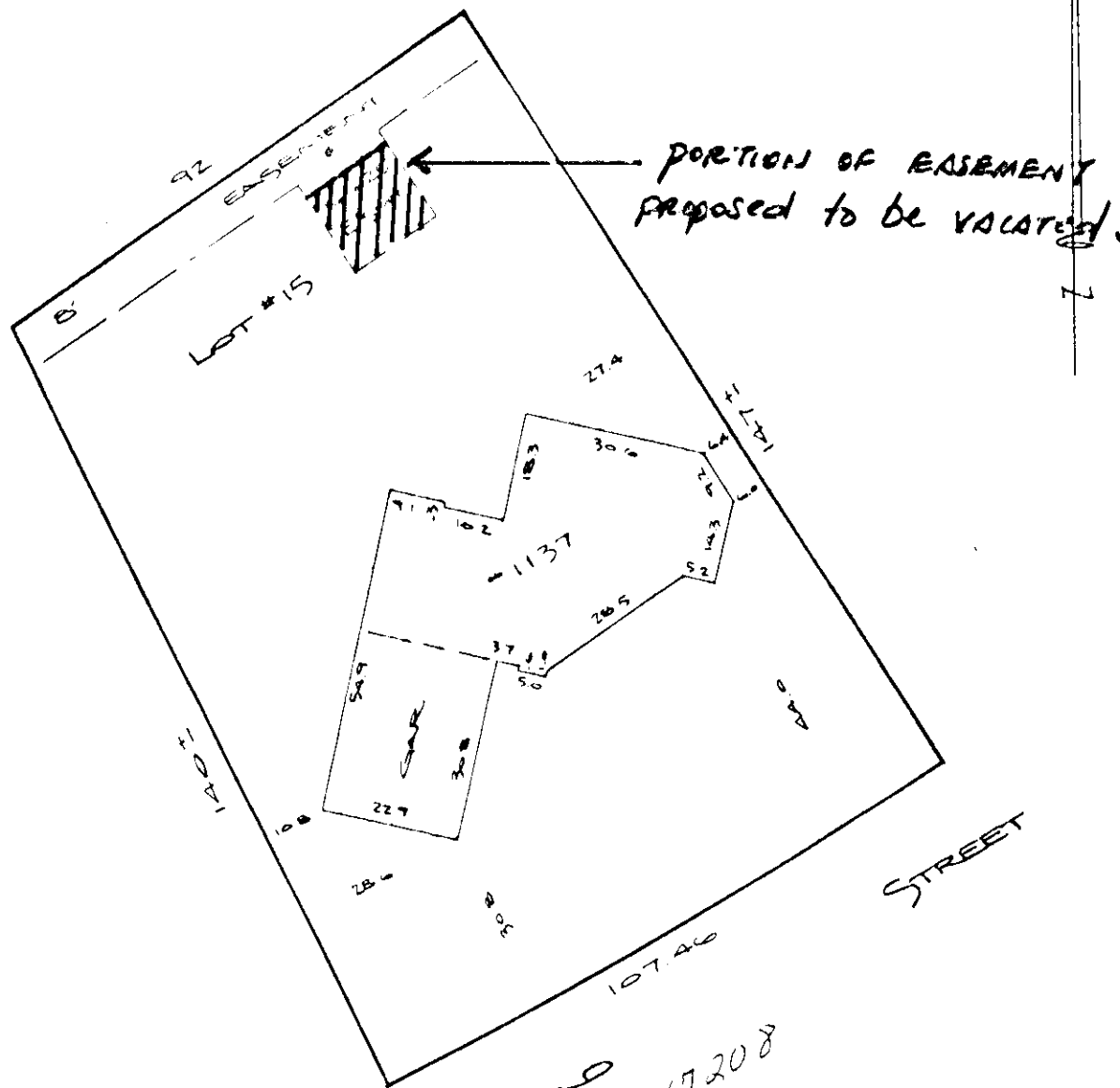


Dr. Andrew T. Pickens
1137 Farmstead
Wichita, Kansas 67208

Air Capitol Land Surveyors

2160 W 21st STREET
WICHITA, KANSAS 67203

[316] 838-9071



1137 FARMSTEAD
WICHITA, KANSAS 67208

V-1202