

RECOMMENDATION FROM METROPOLITAN AREA PLANNING' COMMISSION TO BOARD OF CITY COMMISSIONERS

REQUEST FOR VACATION

CASE NO. V- 1199

CONSIDERED BY:

SUBDIVISION COMMITTEE: 6-23-83

PLANNING COMMISSION: 6-30-83

REQUEST FOR VACATION OF: easement

LOCATION: east side of Classen in an area north of Wassall

LEGALLY DESCRIBED AS:

All the easement platted on the rear of Lot 25, Block 2, Classen Parked Addition, which is east of a line connecting a point on the north lot line 120 feet east of the northwest lot corner with a point on the south lot line 120 feet east of the southwest lot corner.

REASON FOR REQUEST: to be able to construct a garage

NAME OF APPLICANT:

Julias Medrano
2762 Classen
Wichita, Ks. 67216

REPRESENTATIVE FOR APPLICANT:

--

PROTESTORS, IF ANY:

--

PLANNING COMMISSION RECOMMENDATION: Approve the vacation request subject to:

- A. Any relocation or reconstruction of utilities necessitated by this vacation shall be at the sole expense of the applicant.
- B. All proceedings shall be without cost to the City, County, or any utility company.

Parsons moved, Chisholm seconded and it carried unanimously. Goebel, Hansen and Lofton were absent. One vacancy.

ATTACHMENTS: Ordinance Approved as to form by the Department of Law

ACTION: Approve the request as recommended by the Metropolitan Area Planning Commission and place the ordinance on its first reading.

97607) (Published in The Daily Record July 22, 1983)

ORDINANCE NO. 38-428

AN ORDINANCE VACATING A PORTION OF A UTILITY EASEMENT ON LOT 25, BLOCK 2, CLASSEN PARKED ADDITION TO SEDGWICK COUNTY, KANSAS.

BE IT ORDAINED BY THE GOVERNING BODY OF THE CITY OF WICHITA, KANSAS:

SECTION 1. That the utility easement described as follows, to-wit:

All the easement platted on the rear of Lot 25, Block 2, Classen Parked Addition to Sedgwick County, Kansas, which is east of a line connecting a point on the north lot line 120 feet east of the northwest lot corner with a point on the south lot line 120 feet east of the southwest lot corner; (MAPC NO. V-1199);

be and the same is hereby vacated in accordance with K.S.A. 13-443, subject, however, to the concurrence in such vacation by the Board of County Commissioners as by law provided.

SECTION 2. That it is hereby recommended to the Board of County Commissioners of Sedgwick County, Kansas, that said above described easement be vacated by said Board in case a proper petition is filed under the provisions of K.S.A. 12-504, 12-505 and K.S.A. 12-506.

SECTION 3. That this Ordinance shall be in force and take effect from and after its passage and publication once in the official city paper.

PASSED AND APPROVED at Wichita, Kansas this 19th
day of July, 1983

ATTEST:

Margalee Wright, Mayor

Donald C. Gisick, City Clerk

(SEAL)

June 29, 1983

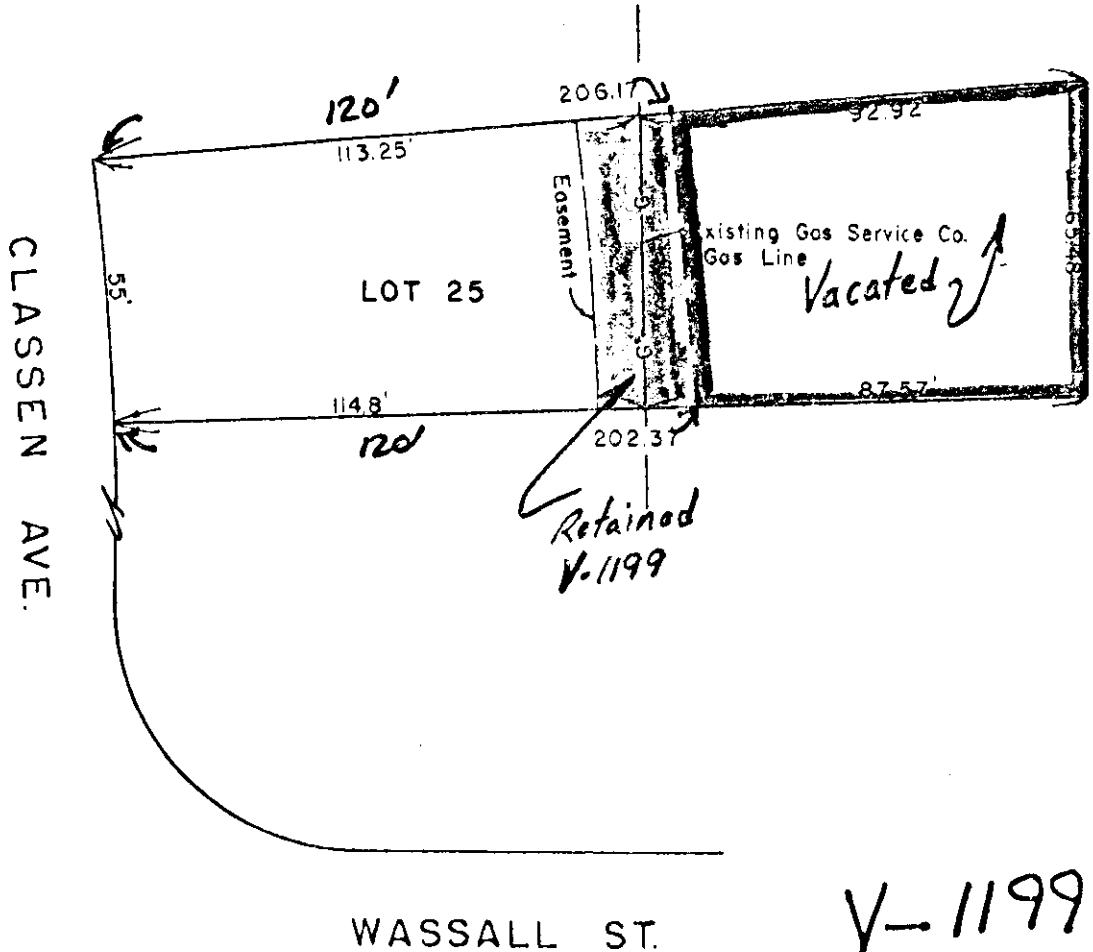
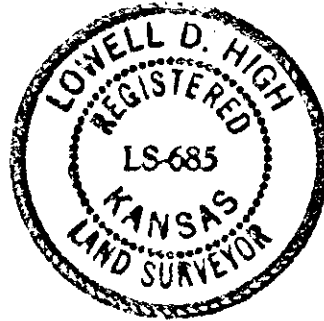
State of Kansas)
County of Sedgwick) SS

I, Lowell D. High, Land Surveyor in the State of Kansas do hereby certify that I did on the 29th day of June, 1983, locate the existing Gas Service Company gas line on the following described property:

Lot 25, Block 2, Classen Parked Addition in Sedgwick County, Kansas.

The accompanying plat is a true and correct exhibit of said survey.

Lowell D. High
Lowell D. High, L.S.



Attention:
Eric Wendt

V-1199