

RECOMMENDATION FROM MAPC TO BOARD OF CITY COMMISSIONERS

V-1187 - VACATION OF A PORTION OF HARRY DRIVE LOCATED BETWEEN AIRPORT ROAD AND HOOVER.

The Planning Commission recommends approval subject to:

- A. The applicant shall guarantee the construction of an industrial cul-de-sac for the remaining portion of Harry east of the portion being vacated.
- B. Appropriate easements shall be retained within the vacated street right-of-way to cover existing utilities and storm sewer.
- C. The applicant shall dedicate by separate instrument the right-of-way needed for relocated Harry Street (suggested name: Pueblo).
- D. The applicant shall make arrangements for the paving of the new street.
- E. The existing Harry Street shall not be closed until the new street is opened and paved.
- F. Appropriate intersection design for the new street shall be worked out with the City Engineer.
- G. Any relocation or reconstruction of utilities necessitated by this vacation shall be at the sole expense of the applicant.

Chisholm moved, Gardner seconded and it carried unanimously. One vacancy. (6-2-83)

ACTION:

Accept the dedication of right-of-way for the new street (Pueblo) and the temporary street easement covering the portion of Harry Street being vacated; place on first reading the ordinance providing for improvements at the intersections of Pueblo and Dugan and of Pueblo and Julia; approve the vacation request as recommended by the Planning Commission and place the vacation ordinance on first reading.

VACATION CASE DATA

Legal Description: Harry Street from the east line of Sierra Drive (west line extended south of Lot 3, Block D, Rolling Hills Mesa) to a line 100 feet west of the west line extended north of Lot 1, Block 1, Airport Industrial Park.

Applicant: The Wichita Airport Authority
attn: Monroe Funk, Director of Airport Engineering
and Planning
2173 Air Cargo Road
Wichita, Kansas 67209

Comments: To facilitate development of land west of Hoover between Harry and the A.T. & S.F. Railroad for general aviation purposes, the Wichita Airport Authority requests the vacation of a portion of Harry. A new road connecting Hoover with Sierra Drive is being dedicated just south of the railroad tracks. The Wichita Airport Authority, with funds from the FAA, will finance the entire cost of improving this new road with the exception of grading work at the intersections of Pueblo (the new road) with Dugan and Julia. This grading is work which the City is requesting at this time in preparation for a possible future collateral road system in connection with upgrading Kellogg to freeway standards. The cost of this grading work is estimated at around \$45,000. An ordinance authorizing City-at-large payment of these costs has been prepared for City Commission consideration. It is recommended that this ordinance be adopted.

Construction of a turnaround to terminate the remaining portion of Harry west of Eisenhower will also be paid for by the Wichita Airport Authority. The entire Harry Street right-of-way being vacated will be retained as a utility and storm sewer easement. Since Harry Street needs to be kept open to traffic until the new street is opened, a temporary street easement is being granted.

Protestors: John Kiser, Airparts Company, Inc., 5801 W. Harry, 67209
Jerry Brindle, Okanco Petroleum Co., Inc., 5909 W. Harry, 67209

(99013) (Published in the Daily Record JUNE 8, 1984)

ORDINANCE NO. 38-810

AN ORDINANCE VACATING A PORTION OF HARRY STREET BETWEEN SIERRA DRIVE AND EISENHOWER AVENUE IN WICHITA, SEDGWICK COUNTY, KANSAS.

BE IT ORDAINED BY THE GOVERNING BODY OF THE CITY OF WICHITA, KANSAS.

SECTION 1. That the portion of Harry Street described as follows, to-wit:

Harry Street from the east line of Sierra Drive (west line extended south of Lot 3, Block D, Rolling Hills Mesa) to a line 100 feet west of the west line extended north of Lot 1, Block 1, Airport Industrial Park, all in Wichita, Sedgwick County, Kansas; (MAPC NO. V-1187);

be and the same is hereby vacated in accordance with K.S.A. 13-443, subject however, to the concurrence in such vacation by the Board of County Commissioners as by law provided.

SECTION 2. That the entire right-of-way being vacated is hereby retained as an easement for utilities and storm sewers in accordance with K.S.A. 12-512(a).

SECTION 3. That it is hereby recommended to the Board of County Commissioners of Sedgwick County, Kansas, that said above described street be vacated by said Board in case a proper petition is filed under the provisions of K.S.A. 12-504, 12-505 and K.S.A. 12-506.

SECTION 4. That this Ordinance shall be in force and take effect from and after its passage and publication once in the official city paper.

PASSED AND APPROVED at Wichita, Kansas, this 5TH day of JUNE, 1984.

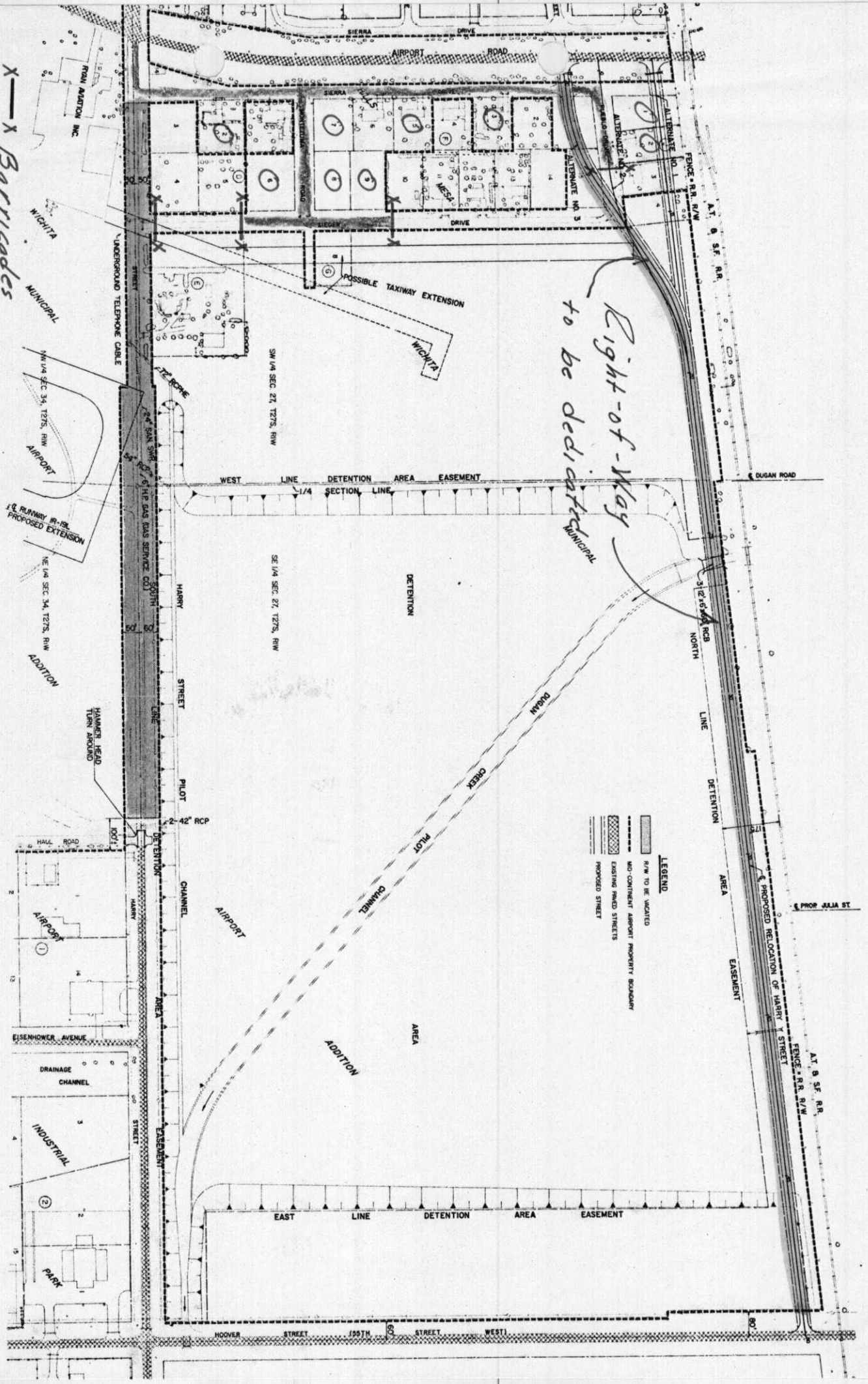
ATTEST:

Robert C. Knight, Mayor

Donald C. Gisick, City Clerk

(SEAL)

X — X Barricades
 O Lots not owned by WAA
 Local Streets to remain
 Open to traffic



*Right-of-Way
 to be dedicated
 MUNICIPAL*

LEGEND
 R/W TO BE VACATED
 MID-CONTINENT AIRPORT PROPERTY BOUNDARY
 EXISTING PAVED STREETS
 PROPOSED STREET