

RECOMMENDATION FROM MAPC TO BOARD OF CITY COMMISSIONERS

V-1258 - VACATION OF A UTILITY EASEMENT LOCATED EAST OF PAMELA CIRCLE  
IN AN AREA NORTH OF HARDYNER AVENUE.

The Planning Commission recommends approval subject to all proceedings being at the applicant's expense.

Bayouth moved, Goebel seconded and it carried unanimously. Banzer and Moore were absent. Gardner not yet present. (5-3-84)

ACTION: Approve the vacation as recommended by the Planning Commission and place the ordinance on first reading.

VACATION CASE DATA

Legal Description: The 10-foot utility easement centered on the lot line common to Lots 1 and 2, Rolling Hills Tenth Addition, Wichita, Kansas, except the east twenty feet thereof.

Applicant: Michael J. Boyd, et al  
128 S. Dellrose, 67218

(98928) (Published in the Daily Record MAY 25, 1984)

ORDINANCE NO. 38-799

AN ORDINANCE VACATING THE UTILITY EASEMENT CENTERED ON THE LOT LINE COMMON TO LOTS 1 AND 2, ROLLING HILLS TENTH ADDITION, WICHITA, KANSAS, EXCEPT THE EAST TWENTY FEET THEREOF.

BE IT ORDAINED BY THE GOVERNING BODY OF THE CITY OF WICHITA, KANSAS.

SECTION 1. That the utility easement described as follows, to-wit:

The 10-foot utility easement centered on the lot line common to Lots 1 and 2, Rolling Hills Tenth Addition, Wichita, Kansas, except the east twenty feet thereof; (MAPC NO. V-1258);

be and the same is hereby vacated in accordance with K.S.A. 13-443, subject however, to the concurrence in such vacation by the Board of County Commissioners as by law provided.

SECTION 2. That it is hereby recommended to the Board of County Commissioners of Sedgwick County, Kansas, that said above described easement be vacated by said Board in case a proper petition is filed under the provisions of K.S.A. 12-504, 12-505 and K.S.A. 12-506.

SECTION 3. That this Ordinance shall be in force and take effect from and after its passage and publication once in the official city paper.

PASSED AND APPROVED at Wichita, Kansas, this 22<sup>ND</sup> day of MAY, 1984.

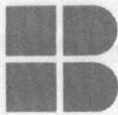
ATTEST:

Robert G. Knight, Mayor

Donald C. Gisick, City Clerk

(SEAL)

WILLIAM L. KORBER, L.S.  
 JOHN E. LUNDBLADE, L.S.  
 N. BRENT WOOTEN, P.E.



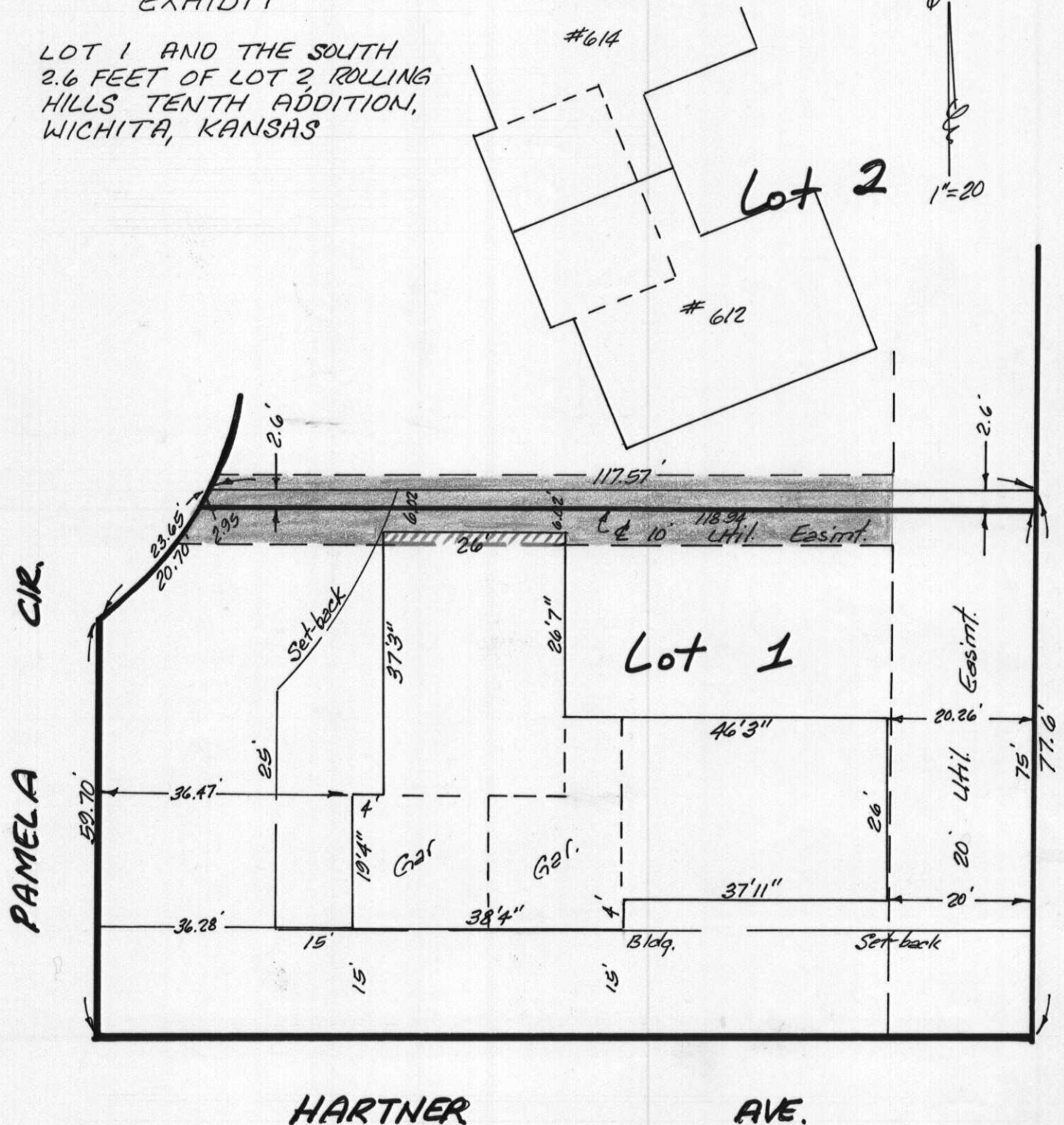
**BAUGHMAN COMPANY, P.A.**

SURVEYING & ENGINEERING

316/262-7271 • 330 LAURA • WICHITA, KANSAS 67211

EXHIBIT

LOT 1 AND THE SOUTH  
 2.6 FEET OF LOT 2, ROLLING  
 HILLS TENTH ADDITION,  
 WICHITA, KANSAS



8 MARCH 1984

V-1258