

WICHITA -- SEDGWICK COUNTY



METROPOLITAN AREA PLANNING
COMMISSION

CITY HALL — TENTH FLOOR
455 NORTH MAIN STREET
WICHITA, KANSAS 67202
(316) 268-4581

September 2, 1988

Mid-Kansas Engineering Consultants
3500 North Rock Road, #801
Wichita, Kansas 67226

Re: V-1559 - Golf Courses of America, Etal - requests
vacation of a utility easement located west of Rock
Road and south of Champion Court.

Gentlemen:

At the September 1, 1988 meeting of the Metropolitan Area Planning Commission, the above-referenced vacation request was approved subject to the conditions recommended by the Subdivision Committee and stated in our August 16, 1988 letter. This case will be scheduled for final public hearing before the Board of City Commissioners after all conditions in our letter of August 26, 1988 have been completed.

If you have any questions about this matter, please call.

Sincerely,

R. Timothy Bickhaus
Junior Planner

RTB:rme

cc: Golf Courses of America, Inc., Suite 300, 151 N. Main,
Wichita, 67202
S. Jim Farha, 818 N. Emporia, Suite 200, Wichita, 67214

FILE COPY

August 26, 1988

Mid-Kansas Engineering Consultants
3500 North Rock Road, #801
Wichita, Kansas 67226

RE: V-1559 - Golf Courses of America, Etal - Requests the
vacation of a utility easement located west of Rock Road
and south of Champion Court.

Gentlemen:

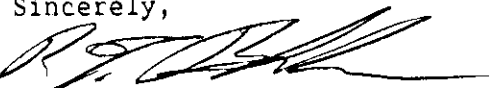
At the regular meeting of the Subdivision Committee of the Metropolitan Area Planning Commission, Thursday, August 25, 1988, the above-captioned vacation case was considered. The action of the Committee was to recommend that this vacation be approved subject to:

- A. Any relocation of utilities necessitated by this vacation shall be at the sole expense of the applicant.
- B. The Vacation order shall clearly state that this vacation shall not affect any platted utility easements which may be overlapped by the easement being vacated.
- C. The applicant shall make satisfactory arrangements with Southwestern Bell and K.G. & E. for relocation of these companies' facilities from the easement being vacated. Once arrangements have been made, letters so stating shall be obtained from the utility companies for the case file.

This matter will be forwarded to the Planning Commission for its consideration on Thursday, September 1, 1988, at the 1:30 p.m. meeting.

If you have any questions, please call.

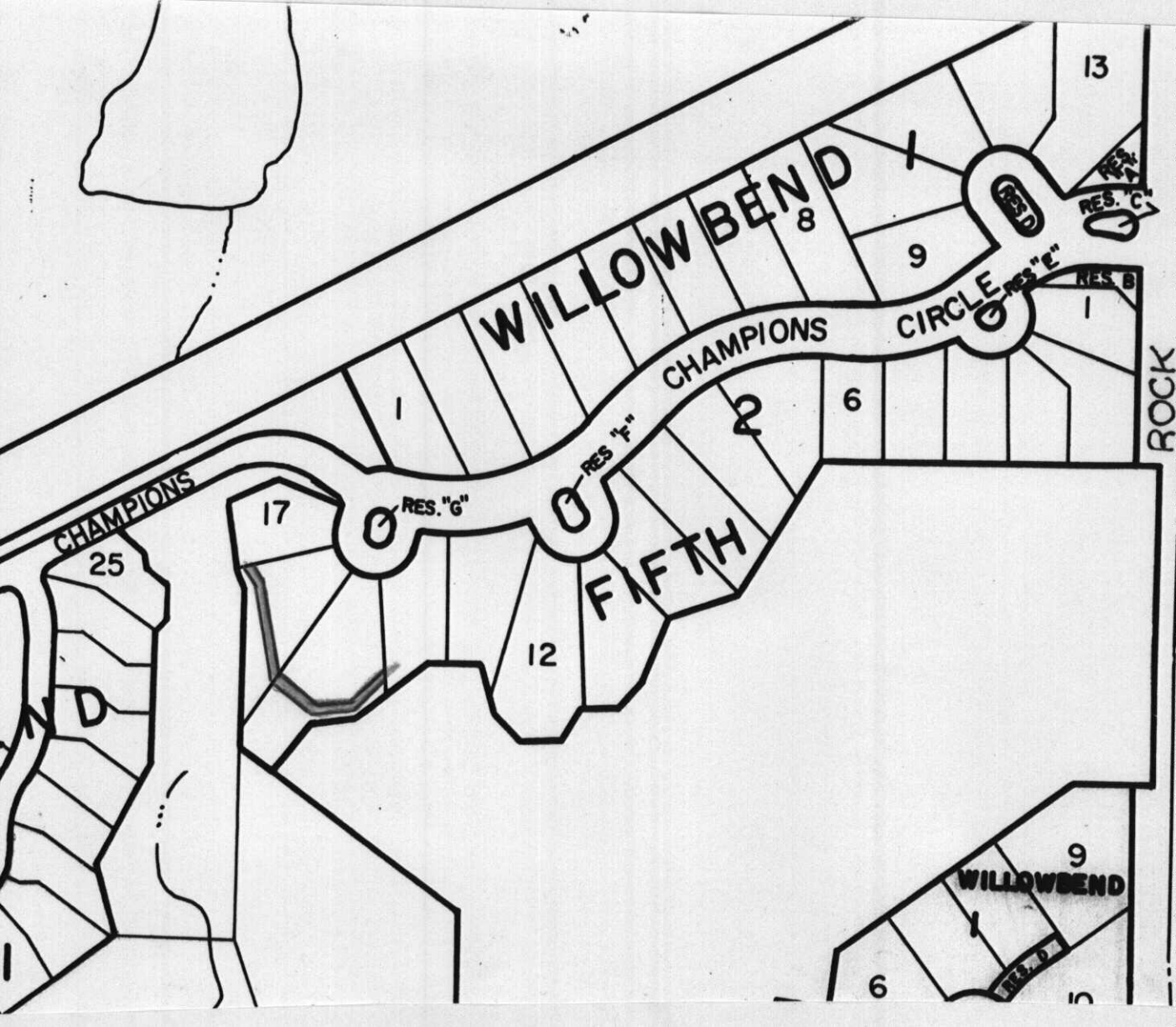
Sincerely,


R. Timothy Bickhaus
Junior Planner

FILE COPY

RTB:blw

cc: Golf Courses of America, Inc., Suite 300, 151 North Main, Wichita, 67202
S. Jim Farha, 818 North Emporia, Suite 200, Wichita, 67214



13

WILLOW BEND

CHAMPIONS CIRCLE

CHAMPIONS

RES. "F"

RES. "G"

FIFTH

ROCK

WILLOW BEND

CHAMPIONS

25

17

12

6

9

8

1

9

6

7

10

ND

1

RES. "C"

RES. "B"

RES. "D"

RES. "E"