

NEWMARKET SQUARE PHASE III ADDITION

AN ADDITION TO WICHITA, SEDGWICK COUNTY, KANSAS

FILE COPY

FINAL TRACING REC'D

7-17-09

FILE COPY

FINAL TRACING REC'D

7-17-09
July 2009 - 36

THIS ADDITION IS SUBJECT TO THE CONDITIONS OF PROTECTIVE OVERLAY #49.
THE STREET DEDICATION ALONG MAIZE ROAD IS HEREBY DEDICATED TO AND FOR THE USE OF THE PUBLIC.

EASEMENTS FOR THE CONSTRUCTION AND MAINTENANCE OF PUBLIC UTILITIES ARE HEREBY GRANTED TO THE CITY OF WICHITA.

ALL ABUTTER'S RIGHT OF ACCESS TO AND FROM MAIZE ROAD OVER AND ACROSS THE EAST PROPERTY LINE IS HEREBY GRANTED TO THE CITY OF WICHITA, PROVIDED HOWEVER THAT THERE SHALL BE ACCESS TO MAIZE ROAD AT ONE LOCATION AS SHOWN.

MINIMUM PAD ELEVATIONS (LOWEST OPENING) SHALL BE AS FOLLOWS:

BLOCK 1 CITY DATUM NGVD
LOTS 1-3 165.6 1353.0

A DRAINAGE PLAN HAS BEEN APPROVED FOR THIS PLAT. ALL DRAINAGE EASEMENTS, RIGHTS-OF-WAY, AND RESERVES SHALL REMAIN AT ESTABLISHED GRADES AND UNOBSTRUCTED TO ALLOW FOR THE CONVEYANCE OF STORM WATER, UNLESS MODIFIED WITH THE APPROVAL OF THE CITY ENGINEER.

KNOW ALL MEN BY THESE PRESENTS THAT WE, THE UNDERSIGNED PROPERTY OWNERS OF THE LAND AS ABOVE SET FORTH IN THE SURVEYOR'S CERTIFICATE, HAVE CAUSED THE LAND TO BE SURVEYED AND PLATTED INTO LOTS AND A BLOCK, THE SAME TO BE KNOWN AS NEWMARKET SQUARE PHASE III ADDITION, AN ADDITION TO WICHITA, SEDGWICK COUNTY, KANSAS.

OWNER:

BUILDING 25, LLC, A KANSAS LIMITED LIABILITY COMPANY

BY: Jerry D. Jones
JERRY D. JONES, VICE PRESIDENT

STATE OF KANSAS)
COUNTY OF SEDGWICK) SS

THIS INSTRUMENT WAS ACKNOWLEDGED BEFORE ME ON THIS 1st DAY OF July, 2009, BY JERRY D. JONES, VICE PRESIDENT OF BUILDING 25, LLC, A KANSAS LIMITED LIABILITY COMPANY.

Sarah E. Hattrup, NOTARY PUBLIC
SARAH E. HATTRUP

SARAH E. HATTRUP
Notary Public - State of Kansas
My Appl. Expires Dec 16, 2012

OWNER:

SOCORA VILLAGE COMPANY, A KANSAS CORPORATION

BY: Jerry D. Jones
JERRY D. JONES, VICE PRESIDENT

STATE OF KANSAS)
COUNTY OF SEDGWICK) SS

THIS INSTRUMENT WAS ACKNOWLEDGED BEFORE ME ON THIS 1st DAY OF July, 2009, BY JERRY D. JONES, VICE PRESIDENT OF SOCORA VILLAGE COMPANY, A KANSAS CORPORATION.

Sarah E. Hattrup, NOTARY PUBLIC
SARAH E. HATTRUP

SARAH E. HATTRUP
Notary Public - State of Kansas
My Appl. Expires Dec 16, 2012

MIDLAND LOAN SERVICES, INC., ATTORNEY-IN-FACT FOR U.S. BANK NATIONAL ASSOCIATION, AS TRUSTEE, IN TRUST FOR THE REGISTERED HOLDERS OF MERRILL LYNCH MORTGAGE TRUST 2008-C1, COMMERCIAL MORTGAGE PASS-THROUGH CERTIFICATES, SERIES 2008-C1, HOLDER OF A MORTGAGE ON THE ABOVE DESCRIBED PROPERTY, HEREBY CONSENTS TO THE PLATTING OF NEWMARKET SQUARE PHASE III, AN ADDITION TO WICHITA, SEDGWICK COUNTY, KANSAS.

BY: Larry S. Smith

STATE OF KANSAS)
COUNTY OF SEDGWICK) SS

THIS INSTRUMENT WAS ACKNOWLEDGED BEFORE ME ON THIS 9th DAY OF July, 2009, BY Larry S. Smith OF MIDLAND LOAN SERVICES, INC.

Ingrid Riley, NOTARY PUBLIC

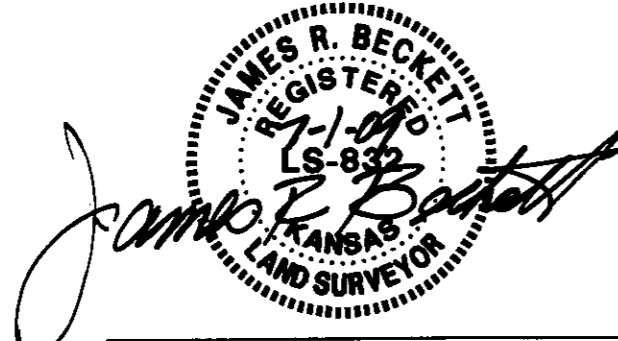
INGRID RILEY
Notary Public - State of Kansas
My Appl. Exp. 6/11/2010

STATE OF KANSAS)
COUNTY OF SEDGWICK) SS

WE, PROFESSIONAL ENGINEERING CONSULTANTS, P.A., ENGINEERS AND SURVEYORS IN AFORESAID STATE AND COUNTY, DO HEREBY CERTIFY THAT OF THIS 1st DAY OF July, 2009, WE HAVE SURVEYED AND PLATTED NEWMARKET SQUARE PHASE III ADDITION, AN ADDITION TO WICHITA, SEDGWICK COUNTY, KANSAS, INTO LOTS, AND A BLOCK, THE SAME BEING A RE-PLAT OF A PART OF LOT 26, BLOCK 7, EVERGREEN, AN ADDITION TO WICHITA, SEDGWICK COUNTY, KANSAS, AND DESCRIBED AS FOLLOWS:

A PART OF LOT 26, BLOCK 7, EVERGREEN, AN ADDITION TO WICHITA, SEDGWICK COUNTY, KANSAS; DESCRIBED AS FOLLOWS: BEGINNING AT THE NORTHEAST CORNER OF LOT 26, BLOCK 7, EVERGREEN, AN ADDITION TO WICHITA, SEDGWICK COUNTY, KANSAS; THENCE BEARING S01°24'27"W, ALONG THE EAST LINE OF SAID LOT 26, A DISTANCE OF 165.00 FEET; THENCE BEARING N88°35'33"W, A DISTANCE OF 54.31 FEET; THENCE BEARING N38°54'24"W, A DISTANCE OF 34.74 FEET; THENCE BEARING N88°35'33"W, A DISTANCE OF 60.00 FEET; THENCE BEARING N35°35'48"W, A DISTANCE OF 105.12 FEET; THENCE BEARING N76°06'25"W, A DISTANCE OF 66.20 FEET; THENCE BEARING S53°16'50"W, A DISTANCE OF 211.89 FEET; THENCE BEARING S35°35'48"E, A DISTANCE OF 202.45; THENCE BEARING S01°24'27"W, A DISTANCE OF 114.95 FEET; THENCE BEARING S88°35'33"E, A DISTANCE OF 114.98 FEET; THENCE BEARING N01°24'27"E, A DISTANCE OF 98.13 FEET; THENCE BEARING N89°48'16"E, A DISTANCE OF 28.50 FEET; THENCE BEARING S01°24'27"W, A DISTANCE OF 221.71 FEET; THENCE BEARING S88°35'33"E, A DISTANCE OF 166.06 FEET, TO THE EAST LINE OF SAID LOT 26; THENCE BEARING S01°24'27"W, A DISTANCE OF 83.75 FEET; THENCE BEARING S01°22'49"W, A DISTANCE OF 237.28 FEET, TO THE SOUTHEAST CORNER OF SAID LOT 26; THENCE BEARING N89°48'16"W, ALONG THE SOUTH LINE OF SAID LOT 26, A DISTANCE OF 1,150.37 FEET, TO THE SOUTHWEST CORNER OF SAID LOT 26; THENCE BEARING N01°24'27"E, ALONG THE WEST LINE OF SAID LOT 26, A DISTANCE OF 605.74 FEET, TO THE NORTH LINE OF SAID LOT 26; THENCE BEARING S80°35'33"E, ALONG THE NORTH LINE OF SAID LOT 26, A DISTANCE OF 158.99 FEET TO THE P.C. OF A CURVE TO THE LEFT WITH A RADIUS OF 467.00 FEET, THROUGH A CENTRAL ANGLE OF 45°00'00", AN ARC DISTANCE OF 366.78 FEET; THENCE BEARING N54°24'27"E, A DISTANCE OF 317.02 FEET, TO THE P.C. OF A CURVE TO THE RIGHT WITH A RADIUS OF 258.00 FEET, THROUGH A CENTRAL ANGLE OF 37°00'00", AN ARC DISTANCE OF 166.61 FEET; THENCE BEARING S88°35'33"E, A DISTANCE OF 238.06 FEET TO THE POINT OF BEGINNING.

ALL PUBLIC EASEMENTS LYING WITHIN THE ABOVE DESCRIBED TRACT OF LAND ARE HEREBY VACATED AND REPLATTED BY VIRTUE OF KSA 12-512(b) AMENDED.



JAMES R. BECKETT, R.L.S. NO. 832
PROFESSIONAL ENGINEERING CONSULTANTS, P.A.

WE, LEGACY BANK, HOLDER OF A MORTGAGE ON THE ABOVE DESCRIBED PROPERTY, DO HEREBY CONSENT TO THE PLATTING OF NEWMARKET SQUARE PHASE III ADDITION, AN ADDITION TO WICHITA, SEDGWICK COUNTY, KANSAS.

Todd M. Smalley
TODD M. SMALLLEY, VICE-PRESIDENT

STATE OF KANSAS)
COUNTY OF SEDGWICK) SS

THIS INSTRUMENT WAS ACKNOWLEDGED BEFORE ME ON THIS 10th DAY OF July, 2009, BY TODD M. SMALLLEY, VICE-PRESIDENT OF LEGACY BANK.

F. Lynn Holloway, NOTARY PUBLIC
F. LYNN HOLLOWAY

MY APPOINTMENT EXPIRES: 7/29/09

F. LYNN HOLLOWAY
Notary Public - State of Kansas
My Appl. Exp. 7/29/09

THIS PLAT OF NEWMARKET SQUARE PHASE III ADDITION HAS BEEN SUBMITTED TO AND APPROVED BY THE WICHITA-SEDGWICK COUNTY METROPOLITAN AREA PLANNING COMMISSION, WICHITA, KANSAS.

DATED THIS _____ DAY OF _____, 2009.

WICHITA-SEDGWICK COUNTY METROPOLITAN AREA PLANNING COMMISSION

_____, CHAIR

DARRELL DOWNING

_____, SECRETARY

JOHN L. SCHLEGEL

REVIEWED IN ACCORDANCE WITH K.S.A. 58-2005 ON THIS _____ DAY

OF _____, 2009.

TRICIA L. ROBELLO, LS #1246
DEPUTY COUNTY SURVEYOR
SEDGWICK COUNTY KANSAS

THIS PLAT IS APPROVED AND ALL DEDICATIONS SHOWN HEREON, IF ANY ARE ACCEPTED

BY THE CITY COUNCIL OF THE CITY OF WICHITA, KANSAS, THIS _____ DAY

OF _____, 2009.

_____, MAYOR

CARL BREWER

_____, CITY CLERK

KAREN SUBLETT

ENTERED ON TRANSFER RECORD THIS _____ DAY

OF _____, 2009.

_____, COUNTY CLERK

KELLY B. ARNOLD

THIS IS TO CERTIFY THAT THIS INSTRUMENT WAS FILED FOR RECORD IN THE

REGISTER OF DEEDS OFFICE AT _____, M., ON THE _____ DAY

OF _____, 2009.

_____, REGISTER OF DEEDS

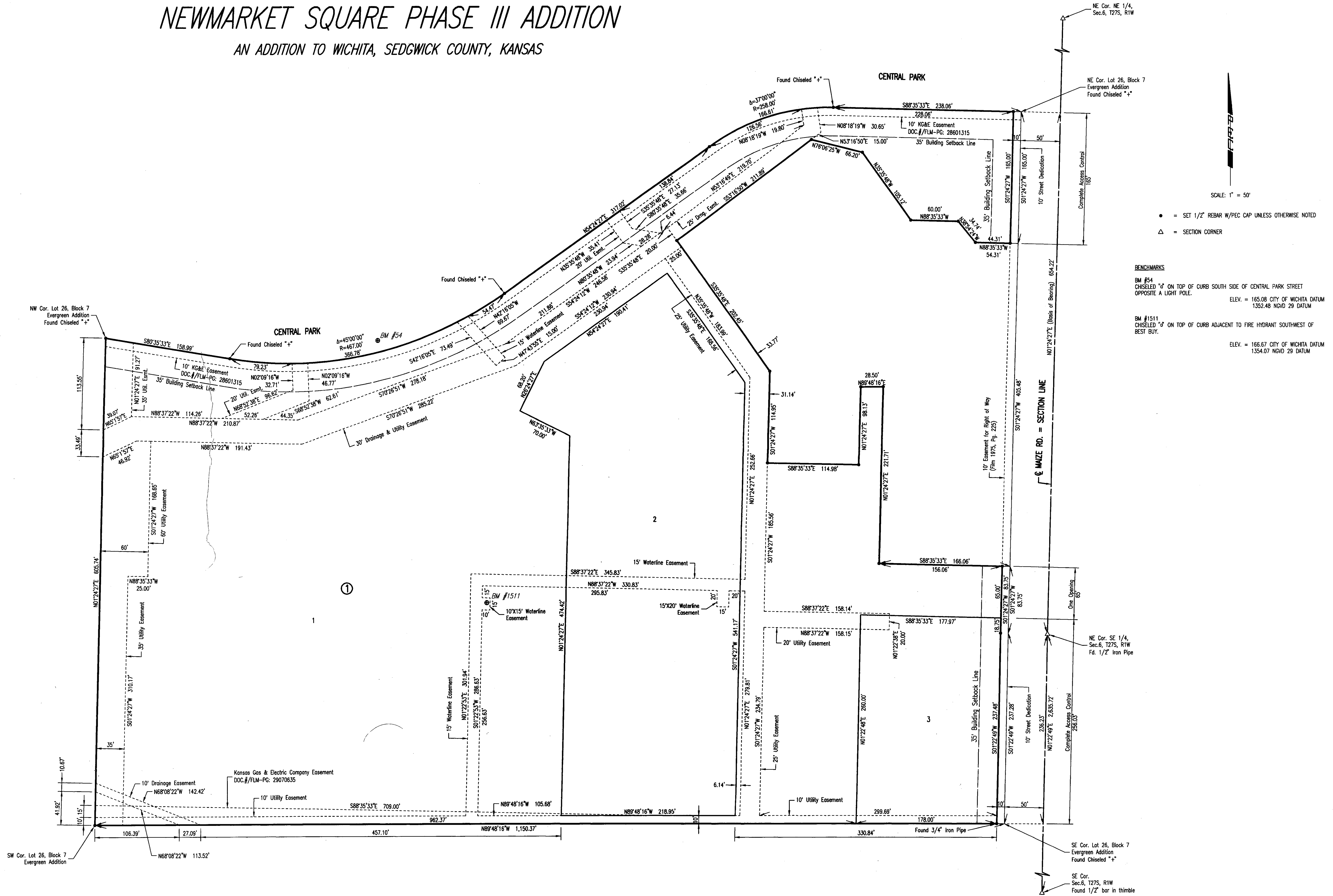
BILL WEEK

_____, DEPUTY

TONYA BUCKINGHAM

NEWMARKET SQUARE PHASE III ADDITION

AN ADDITION TO WICHITA, SEDGWICK COUNTY, KANSAS



SCALE: 1" = 50'

- = SET 1/2" REBAR W/PEC CAP UNLESS OTHERWISE NOTED
- △ = SECTION CORNER

BENCHMARKS

BM #54
CHISELED "d" ON TOP OF CURB SOUTH SIDE OF CENTRAL PARK STREET
OPPOSITE A LIGHT POLE.
ELEV. = 165.08 CITY OF WICHITA DATUM
1352.48 NGVD 29 DATUM

BM #1511
CHISELED "d" ON TOP OF CURB ADJACENT TO FIRE HYDRANT SOUTHWEST OF
BEST BUY.
ELEV. = 166.67 CITY OF WICHITA DATUM
1354.07 NGVD 29 DATUM