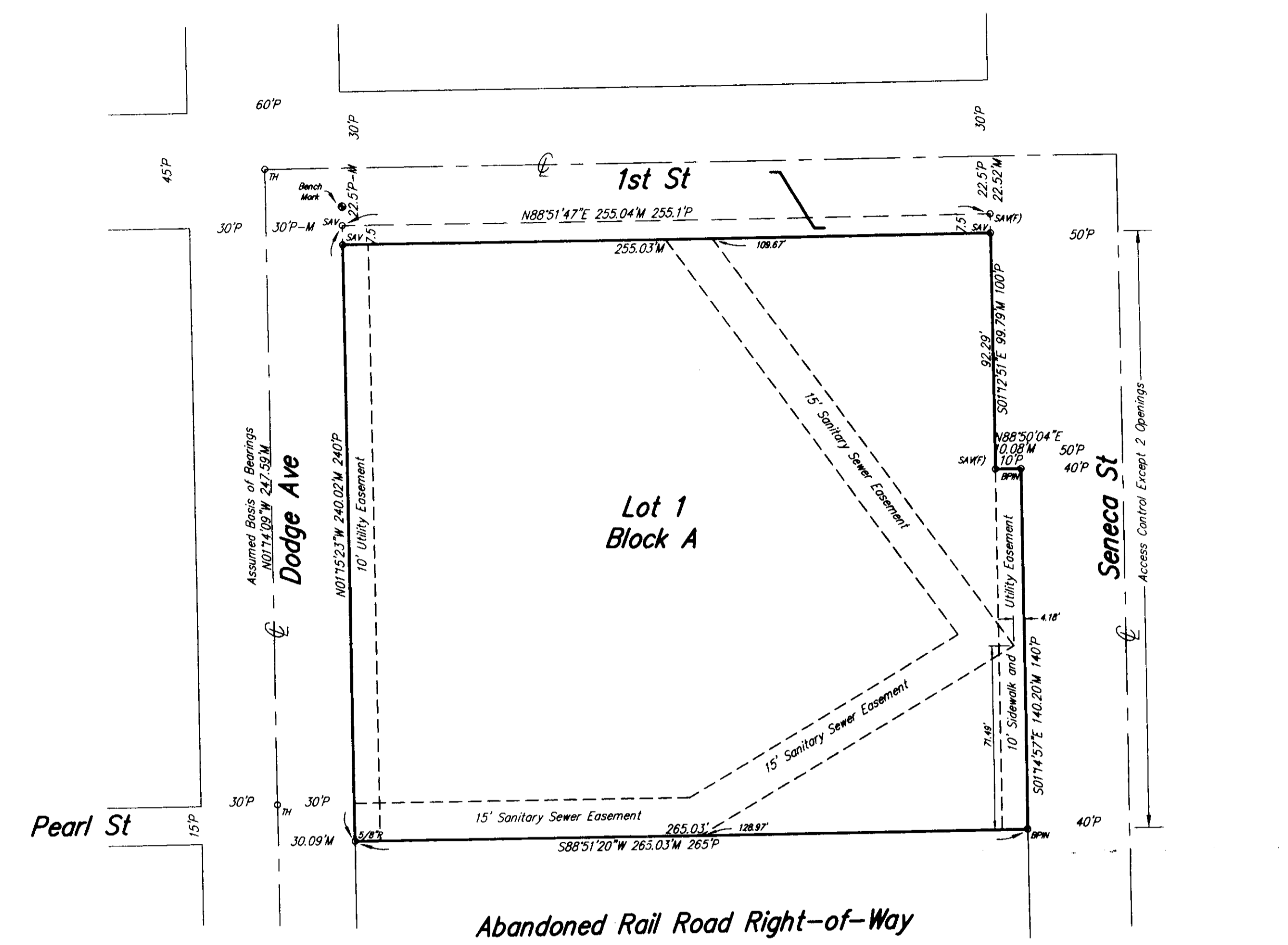


BRAUM 1ST ADDITION

Wichita, Sedgwick County, Kansas



State of Kansas) SS
Sedgwick County)

We, Savoy Company, P.A., Surveyors in aforesaid county and state do hereby certify that, under the supervision of the undersigned, we have surveyed and platted "BRAUM 1ST ADDITION", Wichita, Sedgwick County, Kansas and that the accompanying plat is a true and correct exhibit of the property surveyed, described as:

- Parcel 1: Lot 1, Joe's Addition, Wichita, Sedgwick County, Kansas
- Parcel 2: Lots 21, 23, 25, 27 and 29 on Seneca Street, in Martinson's 2nd Addition to West Wichita, Sedgwick County, Kansas together with the East Half of Vacated Alley adjoining said Lots 21, 23, 25, 27 and 29 on the west and together with Vacated Pearl Street as platted in said Martinson's 2nd Addition, adjoining said Lot 21 and said East Half of vacated alley on the South.
- Parcel 3: Lots 22, 24, 26, 28 and 30, Dodge Avenue, Martinson's 2nd Addition to West Wichita, Sedgwick County, Kansas, together with the West Half of vacated alley adjoining said Lots 22, 24, 26, 28 and 30 on the East and together with Vacated Pearl Street as platted in said Martinson's 2nd Addition, adjoining said Lot 22 and said West Half of vacated alley on the South.
- Parcel 4: Lots 32, 34, 36 and 38 on Dodge Avenue, Martinson's Sixth Addition to Wichita, Sedgwick County, Kansas, together with the West Half of Vacated North-South Alley lying East of Lots 32, 34, 36 and 38.

All Public easements and dedications being vacated by virtue of K.S.A. 12-512(b).

Savoy Company, P.A.
Date 22 July 2009 *Mark A. Savoy* Surveyor
Mark A. Savoy, PLS #1788

Know all men by these presents that We, the undersigned, have caused the land described in the surveyors certificate to be platted into a Lot, Block and Street to be known as "BRAUM 1ST ADDITION", Wichita, Sedgwick County, Kansas. The Street is hereby dedicated to and for the use of the public. The Sanitary Sewer Easement is hereby granted for the construction and maintenance of a Sanitary Sewer. The Utility Easement is hereby granted for the construction and maintenance of all public utilities. The sidewalk and utility easement is hereby granted as indicated for the construction of all public utilities and a public sidewalk. A drainage plan has been developed for this plat and all drainage easements, rights-of-way, or reserves shall remain at established grades, or as modified with the approval of the City Engineer, and unobstructed to allow for the conveyance of stormwater. Access Controls are hereby granted to

Retail Buildings, Inc.
Elaine Braum President
Elaine Braum

State of Oklahoma) SS
Oklahoma County)
15th day of July 2009, by Elaine Braum, President of Retail Buildings, Inc., on behalf of the corporation.

Teresa L. Bateman Notary Public
My App. t. Exp. 10-12-09 Teresa L. Bateman

This plat of "BRAUM 1ST ADDITION", Wichita, Sedgwick County, Kansas, has been submitted to and approved by the Wichita-Sedgwick County Metropolitan Area Planning Commission, Wichita, Kansas.

Dated this _____ day of _____, 2009.
Wichita-Sedgwick County Metropolitan Area Planning Commission

Darrell Downing Chairman

John L. Schlegel Secretary

This plat approved and all dedications shown hereon, accepted by the City Council of the City of Wichita, Kansas, this _____ day of _____, 2009.

Carl Brewer Mayor

Karen Sublett City Clerk

Reviewed in accordance with K.S.A. 58-2005 on this _____ day of _____, 2009.

Tricia L. Robello, LS #1246 Deputy County Surveyor
Sedgwick County Kansas

Entered on transfer record this _____ day of _____, 2009.

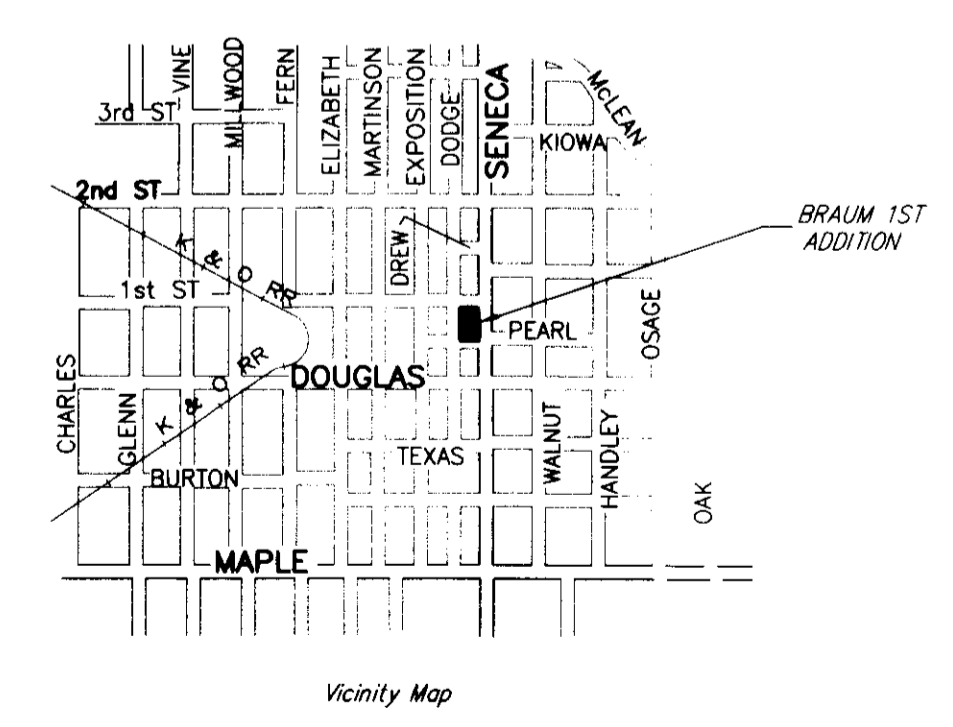
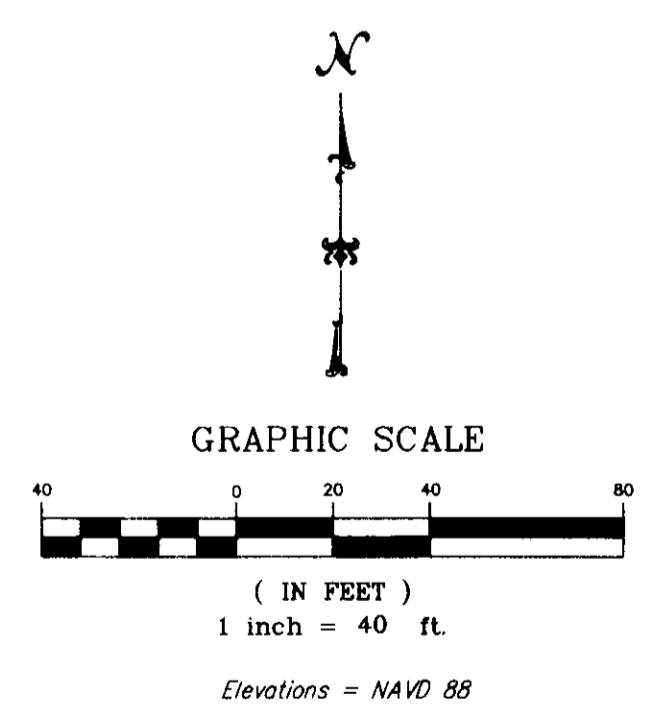
Kelly B. Arnold County Clerk

State of Kansas) SS
Sedgwick County)

This is to certify that this plat has been filed for record in the office of the Register of Deeds, this _____ day of _____, 2009, at _____ o'clock _____ M. and is duly recorded.

Bill Meek Register of Deeds

Tonya Buckingham Deputy



- SITE BENCH MARK: Square "□" cut top of curb 14.9' North of the NW Corner Lot 1, Blk A, Braum 1st Add Elevation = 1301.83 (NAVD 88)
- LEGEND:
P = Platted
M = Measured
C = Calculated
D = Described
- 5/8" R 5/8" REBAR (FOUND)
 - BPIN 1/2" REBAR W/BAUGHMAN CAP (FOUND)
 - MACON 1/2" REBAR W/MACON CAP (FOUND)
 - TH CITY OF WICHITA CONTROL (FOUND)
 - SAV 1/2" REBAR W/SAVY CAP (SET)
 - SAV(F) 1/2" REBAR W/SAVY CAP (FOUND)