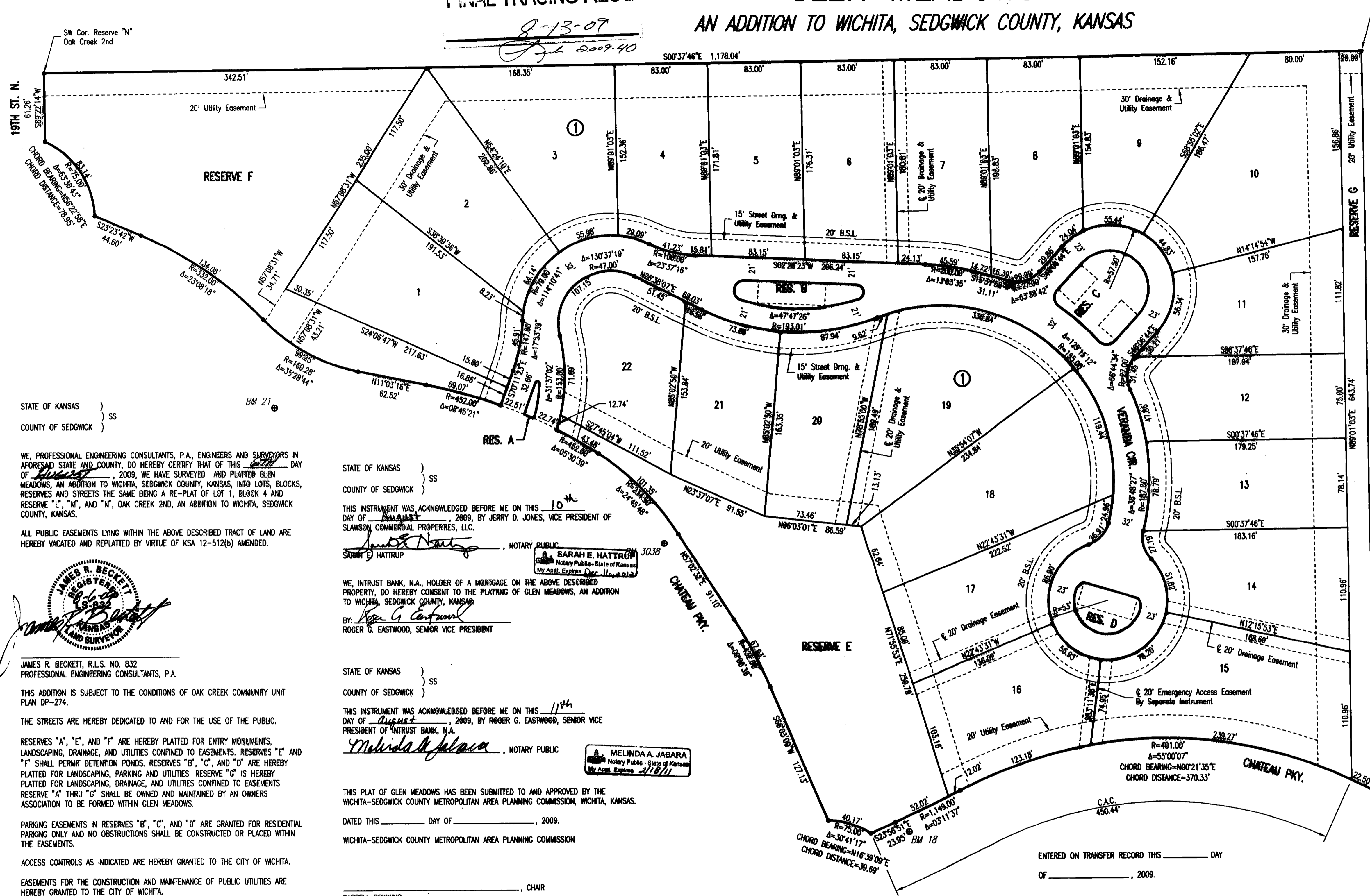


FINAL TRACING RECORD FILE COPY **GLEN MEADOWS**  
AN ADDITION TO WICHITA, SEDGWICK COUNTY, KANSAS



NW Cor. Lot 1, Block 4  
Oak Creek 2nd

SCALE: 1" = 50'

• = 1/2" REBAR W/PEC CAP UNLESS OTHERWISE NOTED

**BENCHMARKS**

BM 18  
CHISELED "d" ON CENTER FACE CURB INLET ON WEST SIDE CHATEAU PARKWAY, 600' SOUTH OF 21ST ST. NORTH NEAR NORTHWEST CORNER GLENGLATE WEST PLAT.  
ELEV. = 1378.64 NGVD29

BM 21  
CHISELED "d" ON WEST SIDE OF CONCRETE BASE FOR LIGHT POLE ON EAST SIDE CHATEAU PARKWAY, 1,200' SOUTH OF 21ST ST. NORTH NEAR SOUTHWEST CORNER GLENGLATE WEST PLAT.  
ELEV. = 1389.73 NGVD29

BM 3038  
CITY DISC ON WEST TOP OF CURB CHATEAU PARKWAY, 165' NORTH OF GLENGLATE COURT.  
ELEV. = 1384.11 NGVD29

MINIMUM OPENINGS	ELEVATION (CITY DATUM)	ELEVATION (NGVD29)
<b>BLOCK 1</b>		
LOTS 1-4	204.60	1392.00
LOT 5	203.60	1391.00
LOTS 6-9	203.10	1390.50
LOT 10, 22	200.60	1388.00
LOT 11	202.10	1389.50
LOT 12	198.60	1386.00
LOT 13	197.10	1384.50
LOTS 14-18	195.10	1382.50
LOT 19	194.10	1381.50
LOT 20	195.10	1382.50
LOT 21	196.60	1384.00

STATE OF KANSAS }  
COUNTY OF SEDGWICK } SS

WE, PROFESSIONAL ENGINEERING CONSULTANTS, P.A., ENGINEERS AND SURVEYORS IN AFORESAID STATE AND COUNTY, DO HEREBY CERTIFY THAT OF THIS 10th DAY OF August, 2009, WE HAVE SURVEYED AND PLATTED GLEN MEADOWS, AN ADDITION TO WICHITA, SEDGWICK COUNTY, KANSAS, INTO LOTS, BLOCKS, RESERVES AND STREETS THE SAME BEING A RE-PLAT OF LOT 1, BLOCK 4 AND RESERVE "L", "M", AND "N", OAK CREEK 2ND, AN ADDITION TO WICHITA, SEDGWICK COUNTY, KANSAS.

ALL PUBLIC EASEMENTS LYING WITHIN THE ABOVE DESCRIBED TRACT OF LAND ARE HEREBY VACATED AND REPLATTED BY VIRTUE OF KSA 12-512(b) AMENDED.



JAMES R. BECKETT, R.L.S. NO. 832  
PROFESSIONAL ENGINEERING CONSULTANTS, P.A.

THIS ADDITION IS SUBJECT TO THE CONDITIONS OF OAK CREEK COMMUNITY UNIT PLAN DP-274.

THE STREETS ARE HEREBY DEDICATED TO AND FOR THE USE OF THE PUBLIC.

RESERVES "A", "E", AND "F" ARE HEREBY PLATTED FOR ENTRY MONUMENTS, LANDSCAPING, DRAINAGE, AND UTILITIES CONFINED TO EASEMENTS. RESERVES "E" AND "F" SHALL PERMIT DETENTION PONDS. RESERVES "B", "C", AND "D" ARE HEREBY PLATTED FOR LANDSCAPING, PARKING AND UTILITIES. RESERVE "G" IS HEREBY PLATTED FOR LANDSCAPING, DRAINAGE, AND UTILITIES CONFINED TO EASEMENTS. RESERVE "A" THRU "G" SHALL BE OWNED AND MAINTAINED BY AN OWNERS ASSOCIATION TO BE FORMED WITHIN GLEN MEADOWS.

PARKING EASEMENTS IN RESERVES "B", "C", AND "D" ARE GRANTED FOR RESIDENTIAL PARKING ONLY AND NO OBSTRUCTIONS SHALL BE CONSTRUCTED OR PLACED WITHIN THE EASEMENTS.

ACCESS CONTROLS AS INDICATED ARE HEREBY GRANTED TO THE CITY OF WICHITA.

EASEMENTS FOR THE CONSTRUCTION AND MAINTENANCE OF PUBLIC UTILITIES ARE HEREBY GRANTED TO THE CITY OF WICHITA.

A DRAINAGE PLAN HAS BEEN APPROVED FOR THIS PLAT. ALL DRAINAGE EASEMENTS, RIGHTS-OF-WAY, AND RESERVES SHALL REMAIN AT ESTABLISHED GRADES AND UNOBSTRUCTED TO ALLOW FOR THE CONVEYANCE OF STORM WATER, UNLESS MODIFIED WITH THE APPROVAL OF THE CITY ENGINEER.

KNOW ALL MEN BY THESE PRESENTS THAT WE, THE UNDERSIGNED PROPERTY OWNERS OF THE LAND AS ABOVE SET FORTH IN THE SURVEYOR'S CERTIFICATE, HAVE CAUSED THE LAND TO BE SURVEYED AND PLATTED INTO LOTS, BLOCKS, RESERVES AND STREETS, THE SAME TO BE KNOWN AS GLEN MEADOWS, AN ADDITION TO WICHITA, SEDGWICK COUNTY, KANSAS.

OWNER:  
SLAWSON COMMERCIAL PROPERTIES, LLC  
BY: Jerry D. Jones  
JERRY D. JONES, VICE PRESIDENT

STATE OF KANSAS }  
COUNTY OF SEDGWICK } SS

THIS INSTRUMENT WAS ACKNOWLEDGED BEFORE ME ON THIS 10th DAY OF August, 2009, BY JERRY D. JONES, VICE PRESIDENT OF SLAWSON COMMERCIAL PROPERTIES, LLC.

Sarah E. Hatrup, NOTARY PUBLIC  
SARAH E. HATRUP

WE, TRUST BANK, N.A., HOLDER OF A MORTGAGE ON THE ABOVE DESCRIBED PROPERTY, DO HEREBY CONSENT TO THE PLATTING OF GLEN MEADOWS, AN ADDITION TO WICHITA, SEDGWICK COUNTY, KANSAS.

BY: Roger G. Eastwood  
ROGER G. EASTWOOD, SENIOR VICE PRESIDENT

STATE OF KANSAS }  
COUNTY OF SEDGWICK } SS

THIS INSTRUMENT WAS ACKNOWLEDGED BEFORE ME ON THIS 11th DAY OF August, 2009, BY ROGER G. EASTWOOD, SENIOR VICE PRESIDENT OF TRUST BANK, N.A.

Melinda A. Jabara, NOTARY PUBLIC  
MELINDA A. JABARA  
Notary Public - State of Kansas  
My Appl. Expires 2/18/11

THIS PLAT OF GLEN MEADOWS HAS BEEN SUBMITTED TO AND APPROVED BY THE WICHITA-SEDGWICK COUNTY METROPOLITAN AREA PLANNING COMMISSION, WICHITA, KANSAS.

DATED THIS \_\_\_\_\_ DAY OF \_\_\_\_\_, 2009.  
WICHITA-SEDGWICK COUNTY METROPOLITAN AREA PLANNING COMMISSION

\_\_\_\_\_, CHAIR  
DARRELL DOWNING

\_\_\_\_\_, SECRETARY  
JOHN L. SCHLEGEL

REVIEWED IN ACCORDANCE WITH K.S.A. 58-2005 ON THIS \_\_\_\_\_ DAY OF \_\_\_\_\_, 2009.

TRICIA L. ROBELLO, LS #1246  
DEPUTY COUNTY SURVEYOR  
SEDGWICK COUNTY KANSAS

THIS PLAT IS APPROVED AND ALL DEDICATIONS SHOWN HEREON, IF ANY ARE ACCEPTED BY THE CITY COUNCIL OF THE CITY OF WICHITA, KANSAS, THIS \_\_\_\_\_ DAY OF \_\_\_\_\_, 2009.

\_\_\_\_\_, MAYOR  
CARL BRINER

\_\_\_\_\_, CITY CLERK  
KAREN SMILETT

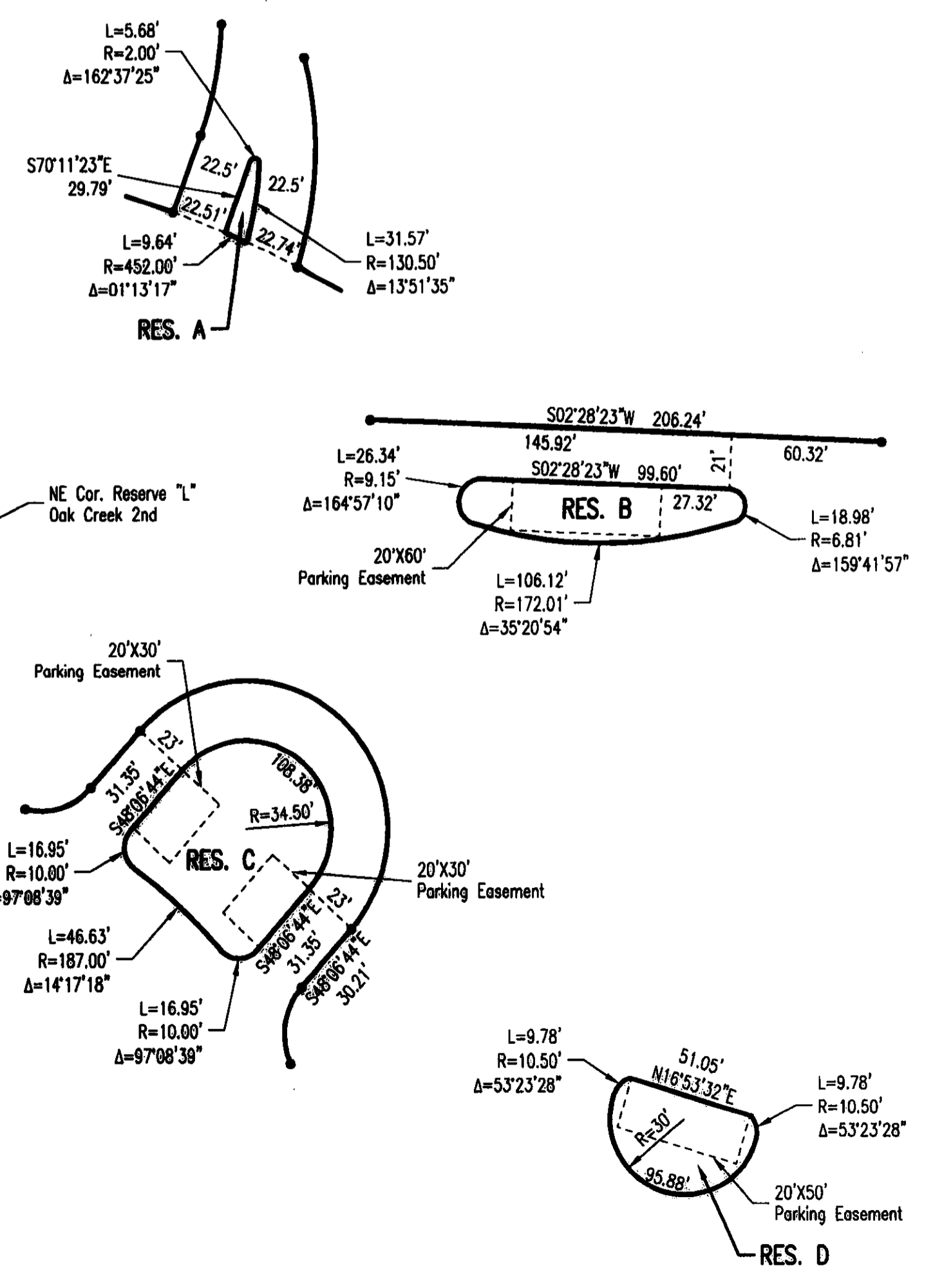
ENTERED ON TRANSFER RECORD THIS \_\_\_\_\_ DAY OF \_\_\_\_\_, 2009.

\_\_\_\_\_, COUNTY CLERK  
KELLY B. ARNOLD

THIS IS TO CERTIFY THAT THIS INSTRUMENT WAS FILED FOR RECORD IN THE REGISTER OF DEEDS OFFICE AT \_\_\_\_\_ M., ON THE \_\_\_\_\_ DAY OF \_\_\_\_\_, 2009.

\_\_\_\_\_, REGISTER OF DEEDS  
BILL MEEK

\_\_\_\_\_, DEPUTY  
TONNA BUSHNINGS



Plotted 08-06-2009 2:03:38 PM by ABE  
Plot Scale 1:50 08-06-2009 2:04:23 PM by ABE  
C:\Users\abe\Documents\2009\Glen Meadows\Glen Meadows.dwg