

# MOUNT CARMEL RIVER ADDITION CITY OF WICHITA, SEDGWICK COUNTY, KANSAS

FINAL TRACING REC'D

PART OF INDIAN HILLS 3RD ADDITION AND SNODGRASS 3RD ADDITION

4/12/08  
April 2008

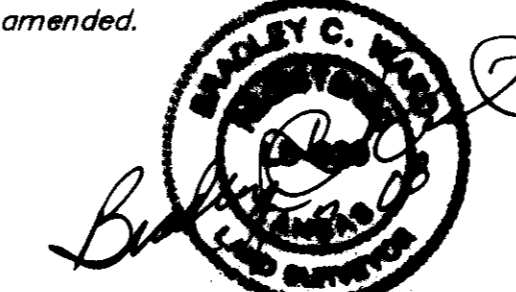
State of Kansas )  
County of Sedgwick ) ss

I, Bradley C. Ward, a registered land surveyor in aforesaid County and State, do hereby certify that this map or plat and the survey on which it is based was made in accordance with the Minimum Standards for Boundary Surveys. Said survey is true and correct to the best of my knowledge. All monuments were either found or set.

**LEGAL DESCRIPTION**  
A tract of land in the Northeast Quarter of Section 12, Township 27 South, Range 1 West, of the 6th Principal Meridian, Sedgwick County, Kansas, being more particularly described as:

Lot 8, Indian Hills 3rd Addition, to Wichita, Kansas and Lot 6, Snodgrass 3rd Addition, to Wichita, Kansas, and Beginning at the NW corner of Lot 8, Indian Hills 3rd Add., on an assumed bearing of N 41°20'27" E, a distance of 53.26 feet, to the high bank of the Arkansas river; thence S 72°16'54" E, a distance of 95.41', along said high bank, to a point that is the projection of the East line of Lot 6, Snodgrass 3rd Add.; thence S 0°00'20" E, a distance of 28.74 feet, to the Northeast corner of Lot 6, Snodgrass 3rd Add.; thence N 77°06'54" W, on the North line of said Lot 6, a distance of 65.84', to the Northwest corner of said Lot 6; thence S 0°12'12" E, on the West line of LOT 6, a distance of 34.19', to the Northeast corner of Lot 8, Indian Hills 3rd Add.; thence N 58°48'08" W, on the North line of said Lot 8, a distance of 71.93', to the Northwest corner of said Lot 8 or the point of beginning

All easements, rights-of-ways and reserves, except Mount Carmel Court and Pleasantview Circle, are hereby vacated by virtue of K.S.A. 12-512(b) amended.



Bradley C. Ward, L.S. #920  
Date 1-2-08

Know all men by these presents, that we, the undersigned, have caused the land described in the surveyor's certificate to be platted into a Lot, Block, and Reserve, to be known as MOUNT CARMEL RIVER ADDITION, Sedgwick County, Kansas. A drainage plan has been developed for the plat and all drainage easements, rights-of-way, or reserves shall remain at established grades or as modified with the approval of the applicable City or County Engineer, and unobstructed to allow for the conveyance of stormwater. Reserve "A" is hereby dedicated to the City of Wichita for drainage, riverbank maintenance, flood control, and river beautification. The land contained herein is held and shall be conveyed subject to any restrictions, reservations, and covenants on file or hereafter filed in the office of the Register of Deeds, of Sedgwick County, Kansas.

*[Signature]* 1/8/08  
Curtis J. Harshfield Date

State of Kansas )  
County of Sedgwick ) ss

This instrument was acknowledged before me on this 04 day of January, 2008, by Curtis J. Harshfield.

*[Signature]*  
Notary Public

My appointment expires: \_\_\_\_\_

We, Bank of America, by Mark Gleason, Asst. VP, holders of a mortgage on the above described property do hereby consent to the plat of Mount Carmel River Addition, City of Wichita, Sedgwick County, Kansas.

*[Signature]*  
Mark Gleason, Assistant Vice President

State of Kansas )  
County of Sedgwick ) ss

The foregoing instrument was acknowledged before me this 31st day of January, 2008, by Mark Gleason.

*[Signature]*  
Notary Public



My appointment expires: \_\_\_\_\_

State of Kansas )  
City of Wichita ) ss

This plat of Mount Carmel River Addition, Wichita, Sedgwick County, Kansas, has been submitted to and approved by the Wichita-Sedgwick County Metropolitan Area Planning Commission, Wichita, Kansas. Dated this \_\_\_\_\_ day of \_\_\_\_\_, 2007. Wichita-Sedgwick County Metropolitan Area Planning Commission.

\_\_\_\_\_, Chair  
M.S. Mitchell

\_\_\_\_\_, Secretary  
John L. Schlegel

State of Kansas )  
City of Wichita ) ss

This plat approved and all dedications shown hereon accepted by the City Council of the City of Wichita, Kansas, this \_\_\_\_\_ day of \_\_\_\_\_, 2008.

At the Direction of the City Council  
\_\_\_\_\_, Mayor  
Carl Brewer

\_\_\_\_\_, City Clerk  
Karen Sublett

\_\_\_\_\_, County Clerk  
Don Brace

Entered on transfer record this \_\_\_\_\_ day of \_\_\_\_\_, 2008.

\_\_\_\_\_, County Clerk  
Don Brace

State of Kansas )  
County of Sedgwick ) ss

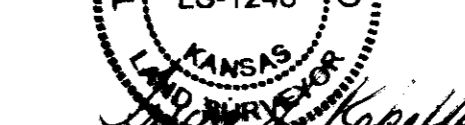
This is to certify that this instrument was filed for record in the Register of Deeds Office, at \_\_\_\_\_ on the \_\_\_\_\_ day of \_\_\_\_\_, 2008, and is duly recorded.

\_\_\_\_\_, Register of Deeds  
Bill Meek

\_\_\_\_\_, Deputy  
Tonya Buckingham

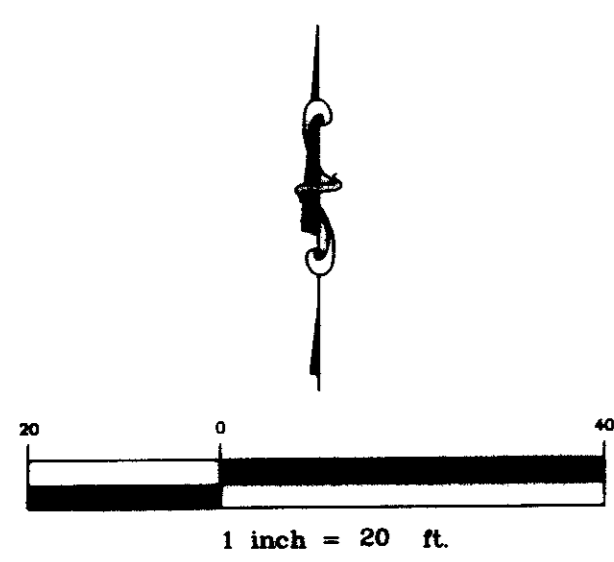
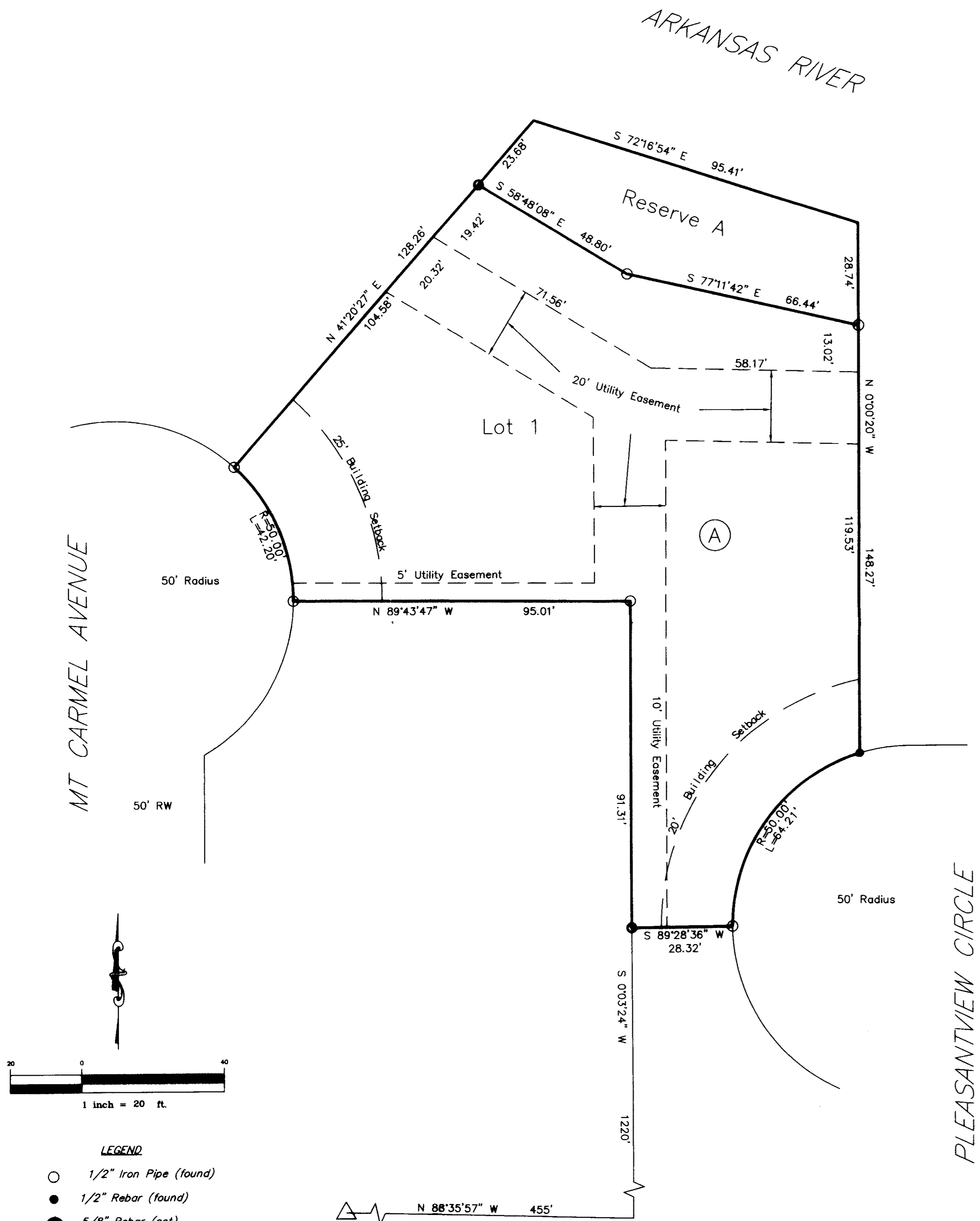
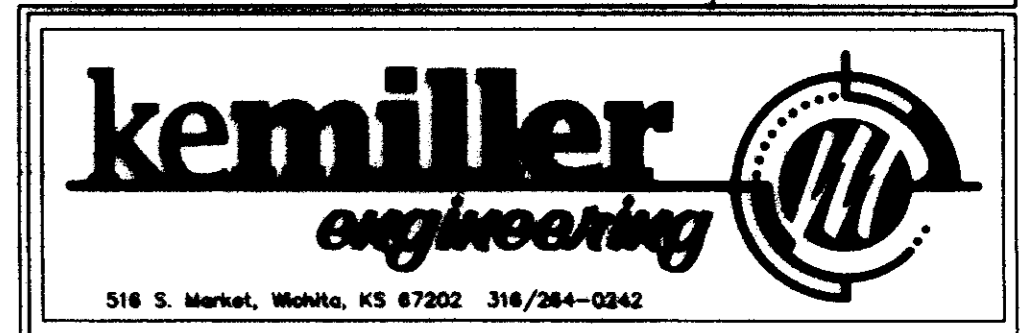
Reviewed in accordance with K.S.A. 58-2005 on this 11th day of February, 2008.

*[Signature]*  
Notary Public



Tricia L. Robello, L.S. #1246  
Deputy County Surveyor  
Sedgwick County, Kansas

Filename: 04136/Plat/Plat Topo.dwg Date Prepared: 1-07-08



- LEGEND**
- 1/2" Iron Pipe (found)
  - 1/2" Rebar (found)
  - ⊙ 5/8" Rebar (set)
  - B. Ward L.S. #920
  - P Platted
  - M Measured
  - C Calculated

N 88°35'57" W 455'  
SW Corner NE 1/4  
Sec. 12, T27s, R1W

**BENCHMARK**  
□ " cut on top of curb, west of the light pole at the south lot line of #1964 N. Mt. Carmel. Elevation=1313.45 MSL.