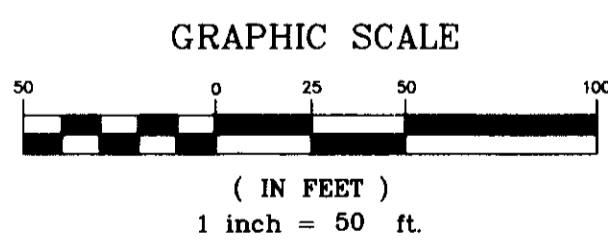
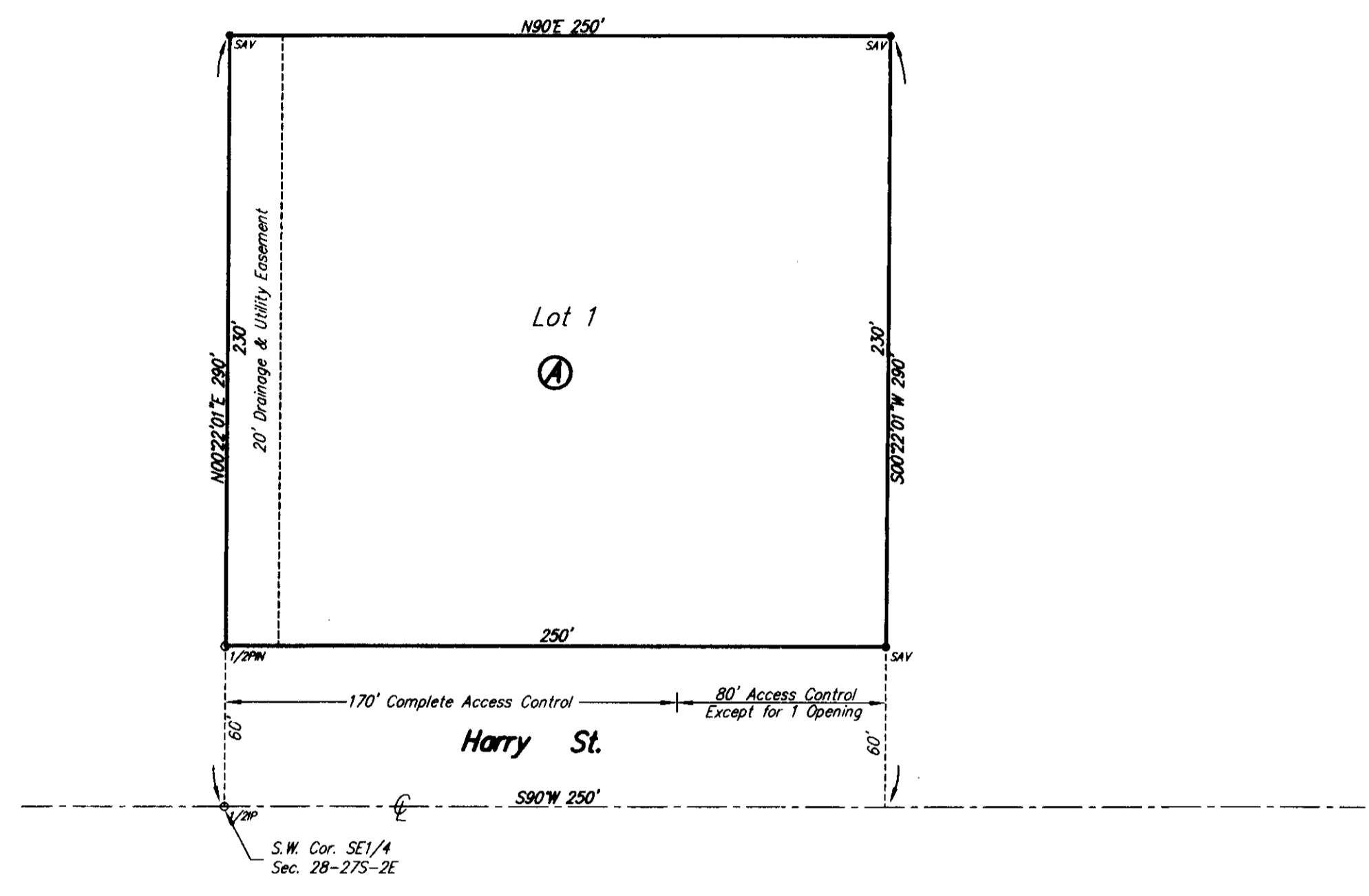


8-11-09
Sub 2008-40

TANNER ADDITION

Wichita, Sedgwick County, Kansas



SURVEY MARKER LEGEND
 1/2" = 1/2" IRON PIPE (FOUND)
 1/2" = 1/2" STEEL PIN (FOUND)
 SAV = 1/2" REBAR W/SAVOY CAP (SET)

State of Kansas) SS
 Sedgwick County)

We, Savoy Company, P.A., Surveyors in aforesaid county and state do hereby certify that, under the supervision of the undersigned, we have surveyed and platted "TANNER ADDITION", Wichita, Sedgwick County, Kansas and that the accompanying plat is a true and correct exhibit of the property surveyed, described as:

The west 250 feet of the south 290 feet of the SE1/4 of Section 28, Twp. 27-S, R-2-E of the 6th P.M., Sedgwick County, Kansas.

All Public easements and dedications being vacated by virtue of K.S.A. 12-512(b).

Savoy Company, P.A.

Date _____

 Mark A. Savoy RLS #1788 Surveyor

Know all men by these presents that We, the undersigned, have caused the land described in the surveyors certificate to be platted into a Lot, Block and Street to be known as "TANNER ADDITION", Wichita, Sedgwick County, Kansas. The drainage and utility easement is hereby granted as indicated for the construction and maintenance of all public utilities, and for drainage purposes. A drainage plan has been developed for this plat and all drainage easements, rights-of-way, or reserves shall remain at established grades, or as modified with the approval of the City Engineer, and unobstructed to allow for the conveyance of stormwater. Access Controls are hereby granted to the appropriate governing body (as indicated on the face of the plat)

Estate of Lela Virginia Tanner, deceased, Case No. 07 PR 608

Dale L. Tanner Executor

State of Kansas) SS
 Sedgwick County)

The foregoing instrument acknowledged before me, this 4th day of August 2009, by Dale L. Tanner, Executor of the Estate of Lela Virginia Tanner, deceased, Case No. 07 PR 608, on behalf of the Estate.

My App't. Exp. 12/30/2011

 Linda S. Hamby Notary Public

This plat of "TANNER ADDITION", Wichita, Sedgwick County, Kansas, has been submitted to and approved by the Wichita-Sedgwick County Metropolitan Area Planning Commission, Wichita, Kansas.
 Dated this _____ day of _____, 2008.

Wichita-Sedgwick County Metropolitan Area Planning Commission

 M. S. Mitchell Chairman

 John L. Schlegel Secretary

This plat approved and all dedications shown hereon, accepted by the City Council of the City of Wichita, Kansas, this _____ day of _____, 2009.

 Carl Brewer Mayor

 Karen Sublett City Clerk

Reviewed in accordance with K.S.A. 58-2005 on this _____ day of _____, 2009.

 Tricia L. Robello, LS #1246 Deputy County Surveyor
 Sedgwick County Kansas

Entered on transfer record this _____ day of _____, 2009.

 Kelly B. Arnold County Clerk

State of Kansas) SS
 Sedgwick County)

This is to certify that this plat has been filed for record in the office of the Register of Deeds, this _____ day of _____, 2009, at _____ o'clock _____ M. and is duly recorded.

 Bill Meek Register of Deeds

 Tanya Buckingham Deputy

