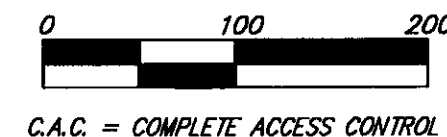
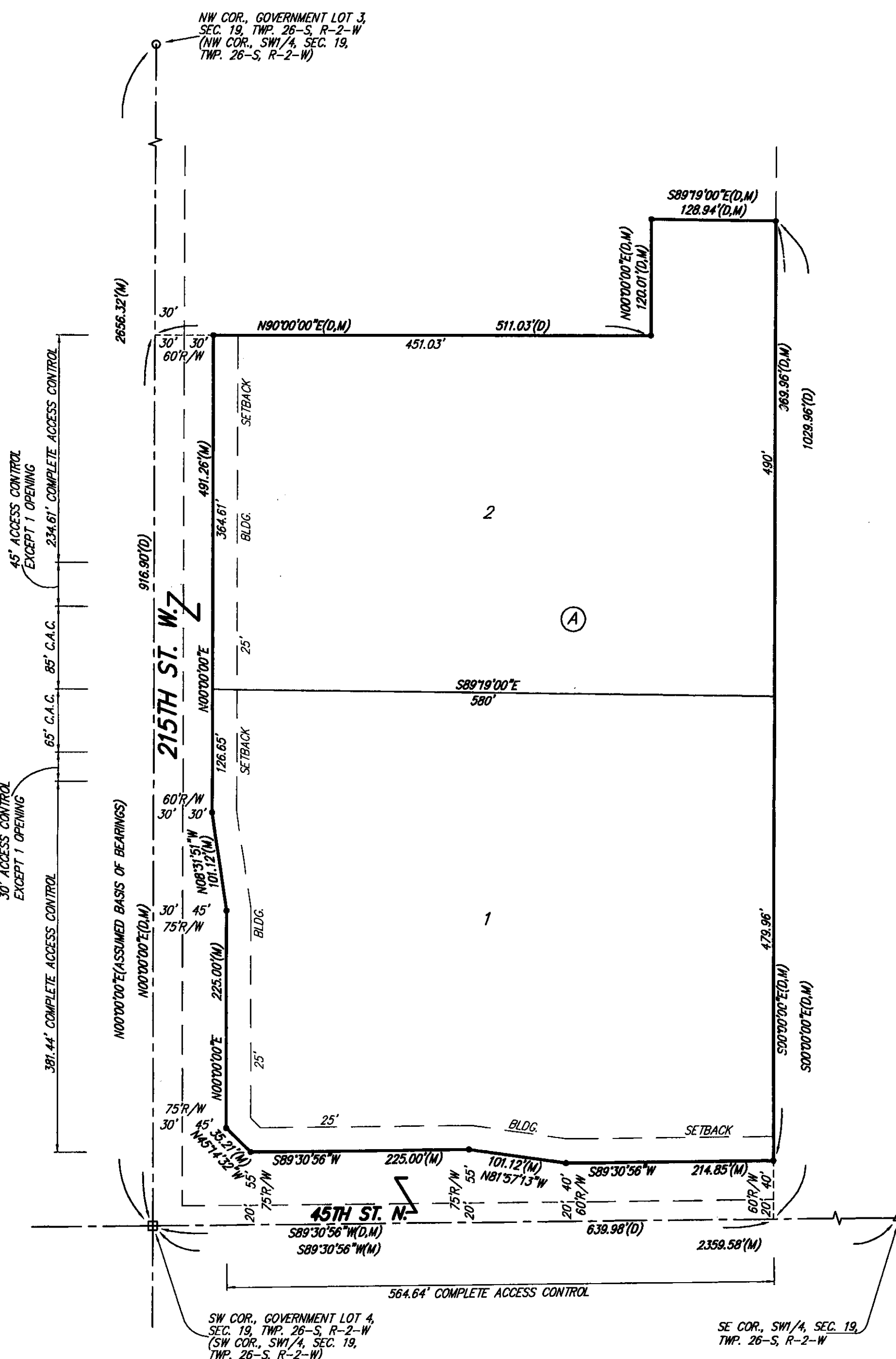


# FINAL TRACING REC'D BEYRLE ADDITION SEDGWICK COUNTY, KANSAS

8-25-08  
2008-144



- = #4 REBAR W/ "BAUGHMAN" CAP (SET)
  - = 1/2" IRON 24" DEEP (FOUND)
  - = 3/4" IRON IN CONC. (FOUND)
  - △ = 1/2" IRON OVER STONE (FOUND)
- (M) = MEASURED  
(D) = DESCRIBED

We, the undersigned holders of a mortgage on the above described property, do hereby consent to this plat of "BEYRLE ADDITION", Sedgwick County, Kansas.

American General Financial Services, Inc.

*Angela Krone*  
ANGELA KRONE

State of Kansas) SS The foregoing instrument acknowledged before me, this 12th day of March, 2008, by ANGELA KRONE, Branch Manager of American General Financial Services, Inc., on behalf of the corporation.

*Jennifer A. Simon*  
JENNIFER A. SIMON, Notary Public  
My App't. Exp. 10-23-11

JENNIFER A. SIMON  
NOTARY PUBLIC - State of Kansas  
My App't. Expires 10-23-11

We, the undersigned holders of a mortgage on the above described property, do hereby consent to this plat of "BEYRLE ADDITION", Sedgwick County, Kansas.

~~FME Capital LLC - a limited liability company~~  
Mortgage Electronic Registration Systems, Inc.

*Lorna L. Slaughter*  
LORNA L. SLAUGHTER, 8-13-08

State of Maryland) SS The foregoing instrument acknowledged before me, this 13th day of August, 2008, by Lorna L. Slaughter, Vice President of ~~FME Capital LLC - a limited liability company~~, on behalf of the ~~limited liability company~~ Mortgage Electronic Registration Systems, Inc. corporation.

*Sonia Beam*  
SONIA BEAM, Notary Public  
My App't. Exp. 09-12-2010

SONIA BEAM  
NOTARY PUBLIC  
STATE OF MARYLAND  
My App't. Expires 09-12-2010

State of Kansas) SS We, Baughman Company, P.A., Surveyors in aforesaid county and state do hereby certify that we have surveyed and platted "BEYRLE ADDITION", Sedgwick County, Kansas and that the accompanying plat is a true and correct exhibit of the property surveyed, described as follows: That part of Government Lot 4 in the SW1/4 of Sec. 19, Twp. 26-S, R-2-W of the 6th P.M., Sedgwick County, Kansas described as beginning at the SW corner of said SW1/4; thence N00°00'00"E (assumed) along the west line of said SW1/4, 916.90 feet; thence N90°00'00"E perpendicular to the west line of said SW1/4, 511.03 feet; thence N00°00'00"E parallel with the west line of said SW1/4, 120.01 feet; thence S89°19'00"E, 128.94 feet; thence S00°00'00"E parallel with the west line of said SW1/4, 1029.96 feet to a point on the south line of said SW1/4; thence S89°30'56"W along the south line of said SW1/4, 639.98 feet to the point of beginning, subject to road rights-of-way of record.

Existing public easements and dedications being vacated by virtue of K.S.A. 12-512(b).

Baughman Company, P.A.

SEDGWICK COUNTY, KANSAS  
L.S. 08-071  
2008  
SURVEYOR  
LAND SURVEYOR

*Michael G. Conrey*  
Michael G. Conrey

Know all men by these presents that we, the undersigned, have caused the land in the surveyors certificate to be platted into Lots, a Block, and Streets, to be known as "BEYRLE ADDITION", Sedgwick County, Kansas. The streets are hereby dedicated to and for the use of the public. Access controls shall be as depicted on the face of the plat and are hereby granted to the appropriate governing body.

*Joyce A. Beyrle*  
Joyce A. Beyrle

*Steve Beyrle*  
Steve Beyrle

Dennis L. Gruenbacher Revocable Trust dated June 21, 1999

*Dennis L. Gruenbacher*  
Dennis L. Gruenbacher, Co-Trustee

*Suzanne M. Gruenbacher*  
Suzanne M. Gruenbacher, Co-Trustee

Suzanne M. Gruenbacher Revocable Trust dated June 1, 1999

*Suzanne M. Gruenbacher*  
Suzanne M. Gruenbacher, Co-Trustee

*Dennis L. Gruenbacher*  
Dennis L. Gruenbacher, Trustee

State of Kansas) SS The foregoing instrument acknowledged before me, this 4th day of March, 2008, by Joyce A. Beyrle and Steve Beyrle, wife and husband.

*Marilyn S. Wilson*  
Marilyn S. Wilson, Notary Public  
My App't. Exp. 1-14-2012

MARILYN S. WILSON  
NOTARY PUBLIC - State of Kansas  
My App't. Expires

State of Kansas) SS The foregoing instrument acknowledged before me, this 20 day of March, 2008, by Dennis L. Gruenbacher and Suzanne M. Gruenbacher, Co-Trustees of the Dennis L. Gruenbacher Revocable Trust dated June 21, 1999, on behalf of the trust.

*Joyce Hommertzhelm*  
JOYCE HOMMERTZHELM, Notary Public  
My App't. Exp. 4-14-2009

JOYCE HOMMERTZHELM  
NOTARY PUBLIC  
STATE OF KANSAS  
My App't. Expires 4-14-2009

State of Kansas) SS The foregoing instrument acknowledged before me, this 30 day of March, 2008, by Suzanne M. Gruenbacher and Dennis L. Gruenbacher, Co-Trustees of the Suzanne M. Gruenbacher Revocable Trust dated June 1, 1999, on behalf of the trust.

*Joyce Hommertzhelm*  
JOYCE HOMMERTZHELM, Notary Public  
My App't. Exp. 4-14-2009

JOYCE HOMMERTZHELM  
NOTARY PUBLIC  
STATE OF KANSAS  
My App't. Expires 4-14-2009

This plat of "BEYRLE ADDITION", Sedgwick County, Kansas has been submitted to and approved by the Wichita-Sedgwick County Metropolitan Area Planning Commission, Wichita, Kansas.

Dated this \_\_\_\_\_ day of \_\_\_\_\_, \_\_\_\_\_  
Wichita-Sedgwick County Metropolitan Area Planning Commission

\_\_\_\_\_, Chair  
*M. S. Mitchell*

\_\_\_\_\_, Secretary  
*John L. Schlegel*

This plat approved and all dedications shown hereon accepted by the Board of Commissioners of Sedgwick County, Kansas, this \_\_\_\_\_ day of \_\_\_\_\_, 2008.

\_\_\_\_\_, Chairman  
*Thomas G. Winters*

ATTEST: \_\_\_\_\_, County Clerk  
*Don Brace*

Reviewed in accordance with K.S.A. 58-2005 on this \_\_\_\_\_ day of \_\_\_\_\_, 2008.

\_\_\_\_\_, Deputy County Surveyor  
*Tricia L. Robella, L.S. #1246*  
Sedgwick County, Kansas

Entered on transfer record this \_\_\_\_\_ day of \_\_\_\_\_, 2008.

\_\_\_\_\_, County Clerk  
*Don Brace*

State of Kansas) SS This is to certify that this plat has been filed for record in the office of the Register of Deeds, this \_\_\_\_\_ day of \_\_\_\_\_, 2008 at \_\_\_\_\_ o'clock \_\_\_\_\_ M; and is duly recorded.

\_\_\_\_\_, Register of Deeds  
*Bill Meek*

\_\_\_\_\_, Deputy  
*Tonya Buckingham*

Baughman Company, P.A.  
315 Ellis St. Wichita, KS 67211 P 316-262-7271 F 316-262-0149  
Baughman  
ENGINEERING | SURVEYING | PLANNING | LANDSCAPE ARCHITECTURE  
F:\PLAT\BEYRLE ADDITION\DWG\BEYRLE.DWG