

# CORNFIELD ADDITION

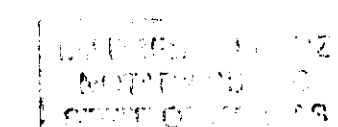
Wichita, Sedgwick County, Kansas

State of Kansas) SS  
Sedgwick County)

We, Ruggles & Bohm, P.A., Land Surveyors in aforesaid county and state, do hereby certify that, under the supervision of the undersigned, we have surveyed and platted "CORNFIELD ADDITION", Wichita, Sedgwick County, Kansas, and that the accompanying plat is a true and correct exhibit of the property surveyed, described as follows:

State of Kansas) SS  
Sedgwick County)

The foregoing instrument acknowledged before me, this 29<sup>th</sup> day of September, 2009, by John E. Elliott and Elena A. Elliott.



Andrew C. Wang Notary Public

My appointment expires 02-13-2011

This plat of "CORNFIELD ADDITION", Wichita, Sedgwick County, Kansas, has been submitted to and approved by the Wichita-Sedgwick County Metropolitan Area Planning Commission, Wichita, Kansas.

Dated this \_\_\_ day of \_\_\_, 2009.

Wichita-Sedgwick County Metropolitan Area Planning Commission

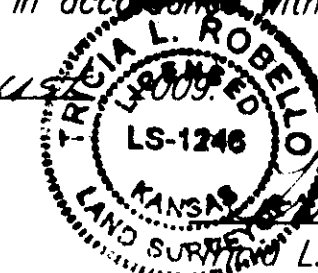
Chair  
Darrell Downing  
Secretary  
John L. Schlegel

This plat approved and all dedications shown herein accepted by the City Council of the City of Wichita, Kansas, this \_\_\_ day of \_\_\_, 2009.

At the Direction of the City Council

Mayor  
Carl Brewer  
City Clerk  
Karen Sublett

Reviewed in accordance with K.S.A. 58-2005 on this 24<sup>th</sup> day of August, 2009.



Deputy County Surveyor  
Sedgwick County Kansas  
L. Robello, LS #1246

Entered on transfer record this \_\_\_ day of \_\_\_, 2009.

County Clerk  
Kelly B. Arnold

State of Kansas) SS  
Sedgwick County)

This is to certify that this plat has been filed for record in the office of the Register of Deeds, this \_\_\_ day of \_\_\_, 2009, at \_\_\_ o'clock \_\_\_ M, and is duly recorded.

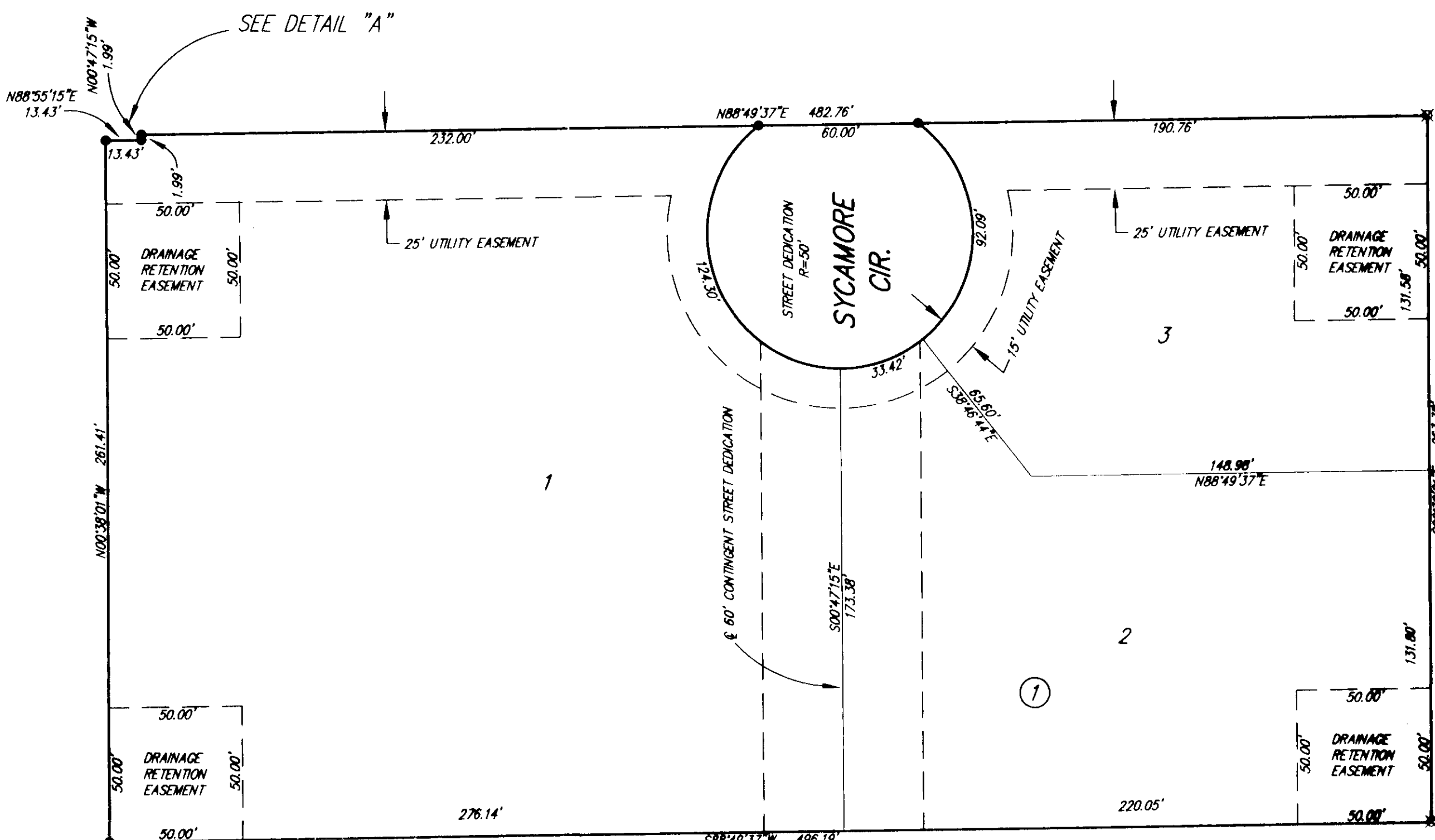
Register of Deeds  
Deputy  
Tonya Buckingham

D = Described  
C = Calculated  
M = Measured  
CD = Calculated from Described  
P = Plotted (South Seneca Gardens Second)

- SURVEY MARKER LEGEND
- 1/2" IRON PIPE IN THIMBLE (FOUND, ORIGIN UNKNOWN)
  - ⊙ 3/4" IRON PIPE IN THIMBLE (FOUND, ORIGIN UNKNOWN)
  - ⊘ 1/2" IRON PIPE (FOUND, ORIGIN UNKNOWN)
  - ⊙ 3/4" IRON PIPE (FOUND, ORIGIN UNKNOWN)
  - ⊗ 1/2" REBAR W/LS 950 CAP (FOUND)
  - 1/2" REBAR W/RUGGLES & BOHM CAP (SET)

BENCH MARK: CHISELED SQUARE ON THE TOP OF CURB AT THE EAST CURB RETURN AT THE NORTH EAST CORNER OF SYCAMORE AND 51ST ST. N. ELEVATION = 1271.31 (NAVD88)

BLOCK	LOT NO.	ELEVATION (N.A.V.D.)
1	1	1272.0
1	2	1271.7
1	3	1272.3



All public easements and dedications are hereby vacated by virtue of K.S.A. 12-512(b).

Ruggles & Bohm, P.A.

Thomas C. Ruggles  
8-19-09

Land Surveyor

Know all men by these presents that we, the undersigned, have caused the land described in the surveyor's certificate to be platted into Lots, a Block and a Street, to be known as "CORNFIELD ADDITION", Wichita, Sedgwick County, Kansas. The street is hereby dedicated to and for the use of the public. Utility Easements are hereby granted for the construction and maintenance of all public utilities. The contingent street dedication is hereby contingently dedicated as street right-of-way to become effective upon the platting of any adjacent subdivision having a street connecting thereto. The costs of constructing said street are to be borne by the person(s) or agency that owns said adjacent subdivision. Drainage Retention Easements are hereby granted for the construction and maintenance of storm water retention ponds. The Drainage Retention Easements will be maintained by the lot owners. A drainage plan has been developed for this plat; the property shall remain at established grades, or as modified with the approval of the City Engineer, and unobstructed to allow for the conveyance of storm water.

John E. Elliott  
John E. Elliott

Elena A. Elliott  
Elena A. Elliott

