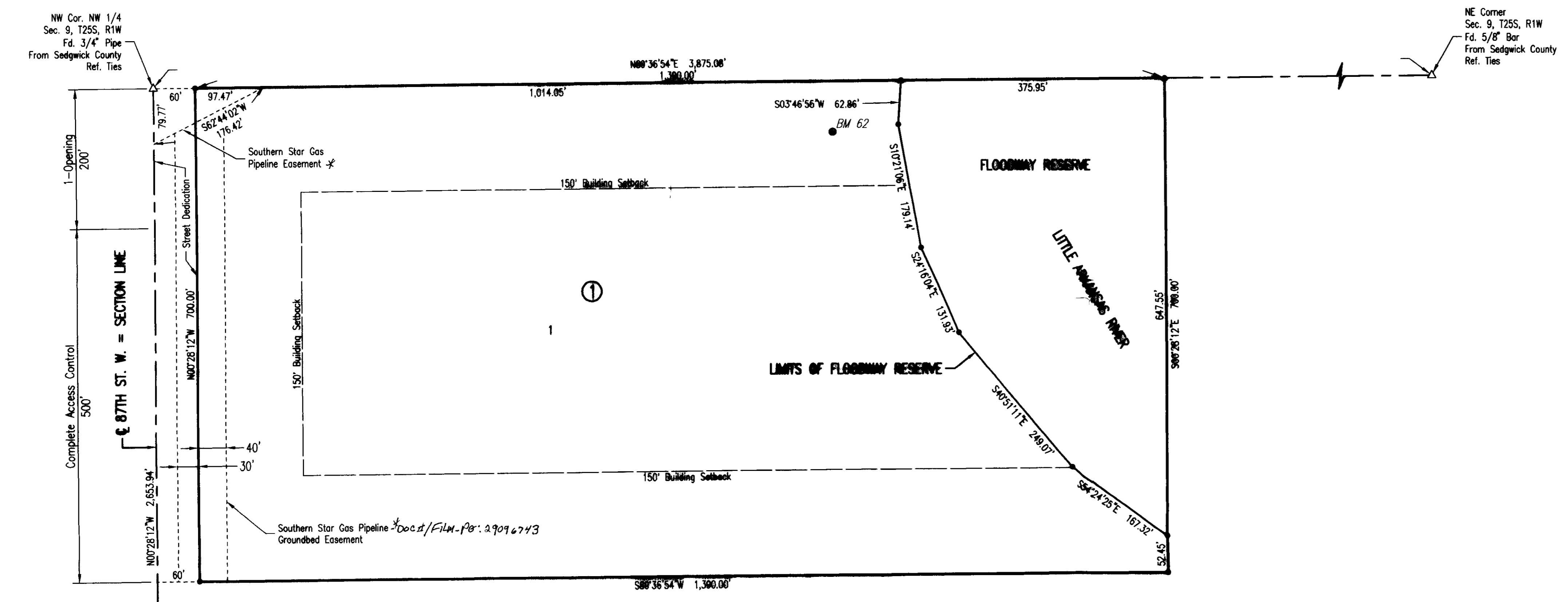


10-8-09  
FILE COPY

# ASR INTAKE SITE ADDITION

AN ADDITION TO SEDGWICK COUNTY, KANSAS



SCALE: 1" = 100'

● = 1/2" REBAR W/PEC CAP UNLESS OTHERWISE NOTED  
 △ = SECTION CORNER

**BENCHMARKS**  
 BM #62  
 A 30" TEE-POST SET 6" BELOW GRADE, LOCATED AT THE EXISTING WATER TREATMENT TEST FACILITY 60' NORTH OF THE NORTHEAST CORNER OF THE EXISTING CHAIN LINK FENCE ON THE NORTH SIDE OF THE PROPOSED NEW ROADWAY IN SEDGWICK COUNTY.

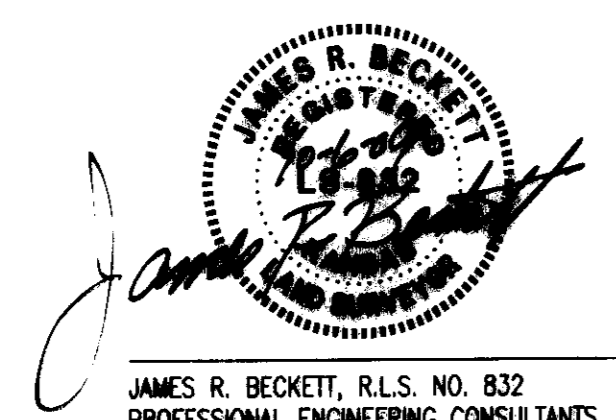
ELEV. 1367.46 NAVD88

MINIMUM PAD ELEVATIONS (LOWEST OPENING) SHALL BE AS FOLLOWS:	
BLOCK 1	NAVDB
LOT 1	1372.0
BASE FLOOD ELEVATION = 1370.0 NAVD88	

STATE OF KANSAS }  
 COUNTY OF SEDGWICK } SS

WE, PROFESSIONAL ENGINEERING CONSULTANTS, P.A., ENGINEERS AND SURVEYORS IN AFORESAID STATE AND COUNTY, DO HEREBY CERTIFY THAT ON THIS 8<sup>TH</sup> DAY OF OCTOBER, 2009, WE HAVE SURVEYED AND PLATTED ASR INTAKE SITE ADDITION, AN ADDITION TO SEDGWICK COUNTY, KANSAS, INTO A LOT, A BLOCK, AND A RESERVE. THE SAME BEING DESCRIBED AS FOLLOWS:

THE NORTH 700 FEET OF THE WEST 1,450 FEET OF THE NORTHWEST QUARTER OF SECTION 9, TOWNSHIP 25 SOUTH, RANGE 1 WEST, OF THE 6TH P.M., SEDGWICK COUNTY, KANSAS.



JAMES R. BECKETT, R.L.S. NO. 832  
 PROFESSIONAL ENGINEERING CONSULTANTS, P.A.

A DRAINAGE PLAN HAS BEEN APPROVED FOR THIS PLAT. ALL DRAINAGE EASEMENTS, RESERVES, AND RIGHTS-OF-WAY SHALL REMAIN AT ESTABLISHED GRADES AND UNOBSTRUCTED TO ALLOW FOR THE CONVEYANCE OF STORMWATER, UNLESS MODIFIED WITH THE APPROVAL OF THE COUNTY ENGINEER.

THIS ADDITION IS SUBJECT TO THE CONDITIONS OF THE INTAKE STRUCTURE CONDITIONAL USE PLAN CON 2009-12.

THE STREETS ARE HERBY DEDICATED TO AND FOR THE USE OF THE PUBLIC.

THE FLOODWAY RESERVE SHALL BE THE RESPONSIBILITY OF THE RESPECTIVE OWNER OF LOT 1, BLOCK 1, UNLIL SUCH TIME AS THE GOVERNING BODY EXERCISING JURISDICTION ELECTS TO ASSUME THE RESPONSIBILITY FOR THE MAINTENANCE AND IMPROVEMENT OF THE FLOODWAY, PROVIDED FURTHER THAT NO STRUCTURES SHALL BE CONSTRUCTED ON OR WITHIN SAID FLOODWAY, NOR SHALL ANY FILL, CHANGE OF GRADE, CREATION OF CHANNEL OR OTHER WORK BE CARRIED ON WITHOUT THE PERMISSION OF THE APPROPRIATE ENGINEER.

ACCESS CONTROLS AS INDICATED ARE HEREBY GRANTED TO THE APPROPRIATE GOVERNING BODY AND SHALL BE IN ACCORDANCE WITH THE SEDGWICK COUNTY ACCESS MANAGEMENT STANDARDS.

KNOW ALL MEN BY THESE PRESENTS THAT WE, THE UNDERSIGNED PROPERTY OWNERS OF THE LAND AS ABOVE SET FORTH IN THE SURVEYOR'S CERTIFICATE, HAVE CAUSED THE LAND TO BE SURVEYED AND PLATTED INTO A LOT, A BLOCK, AND A RESERVE. THE SAME TO BE KNOWN AS ASR INTAKE SITE ADDITION, AN ADDITION TO SEDGWICK COUNTY, KANSAS.

OWNER(S):  
 CITY OF WICHITA, KANSAS MUNICIPAL CORPORATION

CARL BREWER, MAYOR

STATE OF KANSAS }  
 COUNTY OF SEDGWICK } SS

THIS INSTRUMENT WAS ACKNOWLEDGED BEFORE ME ON \_\_\_\_\_, 2009,  
 BY CARL BREWER, MAYOR, CITY OF WICHITA, KANSAS, MUNICIPAL CORPORATION.

\_\_\_\_\_, NOTARY PUBLIC

MY APPOINTMENT EXPIRES:

THIS PLAT OF ASR INTAKE SITE ADDITION HAS BEEN SUBMITTED TO AND APPROVED BY THE WICHITA-SEDGWICK COUNTY METROPOLITAN AREA PLANNING COMMISSION, WICHITA, KANSAS.

DATED THIS \_\_\_\_\_ DAY OF \_\_\_\_\_, 2009.

WICHITA-SEDGWICK COUNTY METROPOLITAN AREA PLANNING COMMISSION

\_\_\_\_\_, CHAIR  
 DARRRELL DOWNING

\_\_\_\_\_, SECRETARY  
 JOHN L. SCHLEGEL

REVIEWED IN ACCORDANCE WITH K.S.A. 58-2005 ON THIS \_\_\_\_\_ DAY OF \_\_\_\_\_, 2009.

TRICIA L. ROBELLO, LS #1246  
 DEPUTY COUNTY SURVEYOR  
 SEDGWICK COUNTY KANSAS

THIS PLAT IS APPROVED AND ALL DEDICATIONS SHOWN HEREON, IF ANY, ARE ACCEPTED BY THE BOARD OF COUNTY COMMISSIONERS OF SEDGWICK COUNTY, KANSAS, THIS \_\_\_\_\_ DAY OF \_\_\_\_\_, 2009.

\_\_\_\_\_, CHAIRMAN  
 KELLY PARKS

\_\_\_\_\_, COUNTY CLERK  
 KELLY B. ARNOLD

ENTERED ON TRANSFER RECORD THIS \_\_\_\_\_ DAY OF \_\_\_\_\_, 2009.

\_\_\_\_\_, COUNTY CLERK  
 KELLY B. ARNOLD

THIS IS TO CERTIFY THAT THIS INSTRUMENT WAS FILED FOR RECORD IN THE REGISTER OF DEEDS OFFICE AT \_\_\_\_\_ A.M. - P.M., ON THE \_\_\_\_\_ DAY OF \_\_\_\_\_, 2009.

\_\_\_\_\_, REGISTER OF DEEDS  
 BILL WEEK

\_\_\_\_\_, DEPUTY  
 TONYA BUCKINGHAM

Saved: 10-06-2009 3:39:00 PM by AET  
 C:\Users\AET\Desktop\10-06-2009 3:39:00 PM  
 C:\Users\AET\Desktop\10-06-2009 3:39:00 PM