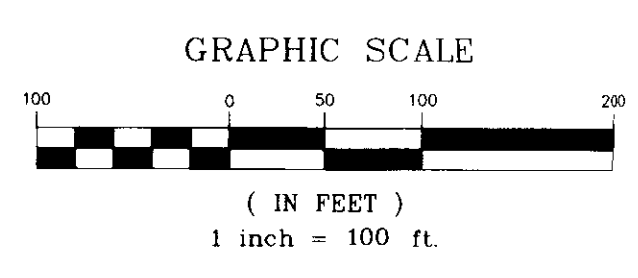
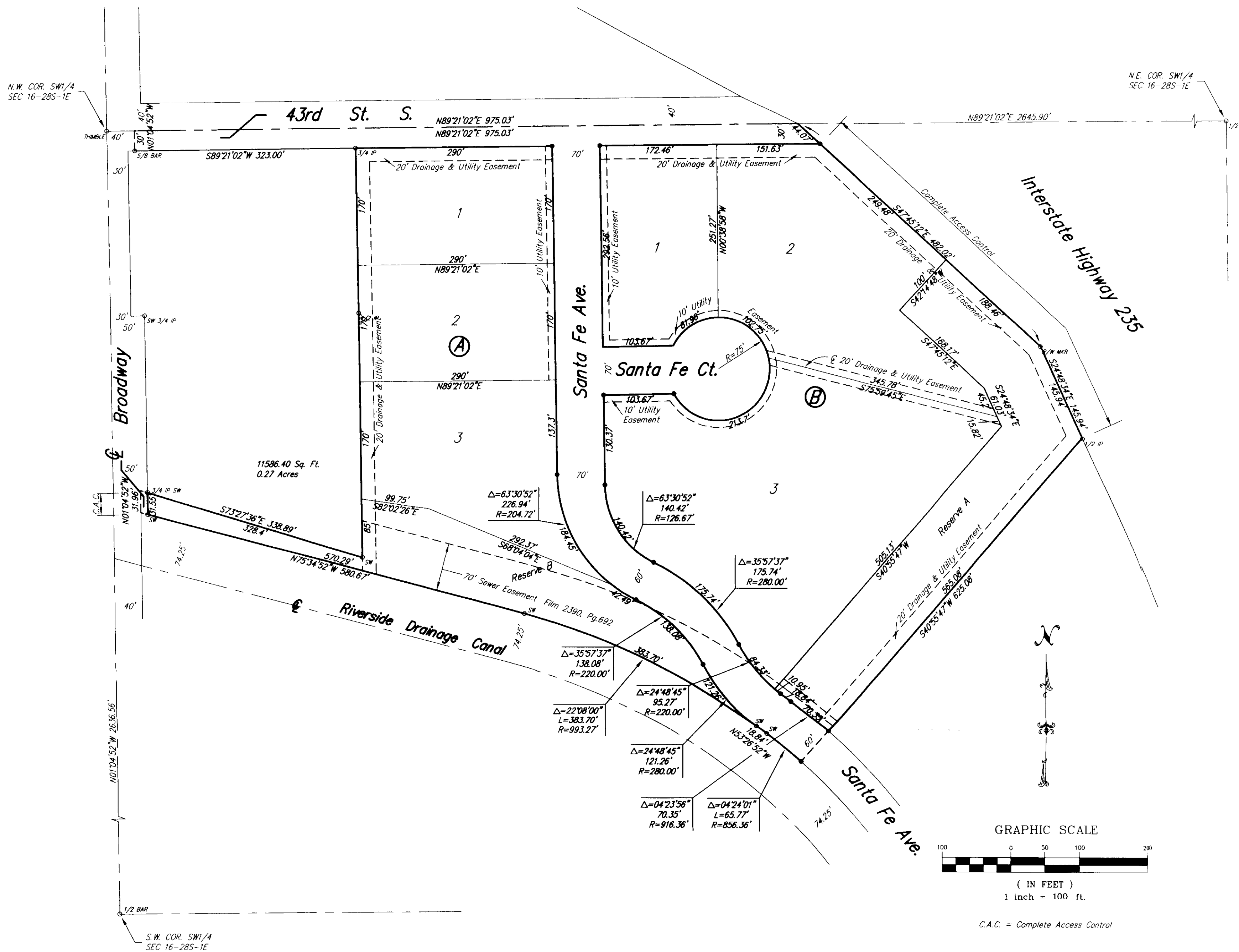


# M A A ADDITION

WICHITA, SEDGWICK COUNTY, KANSAS

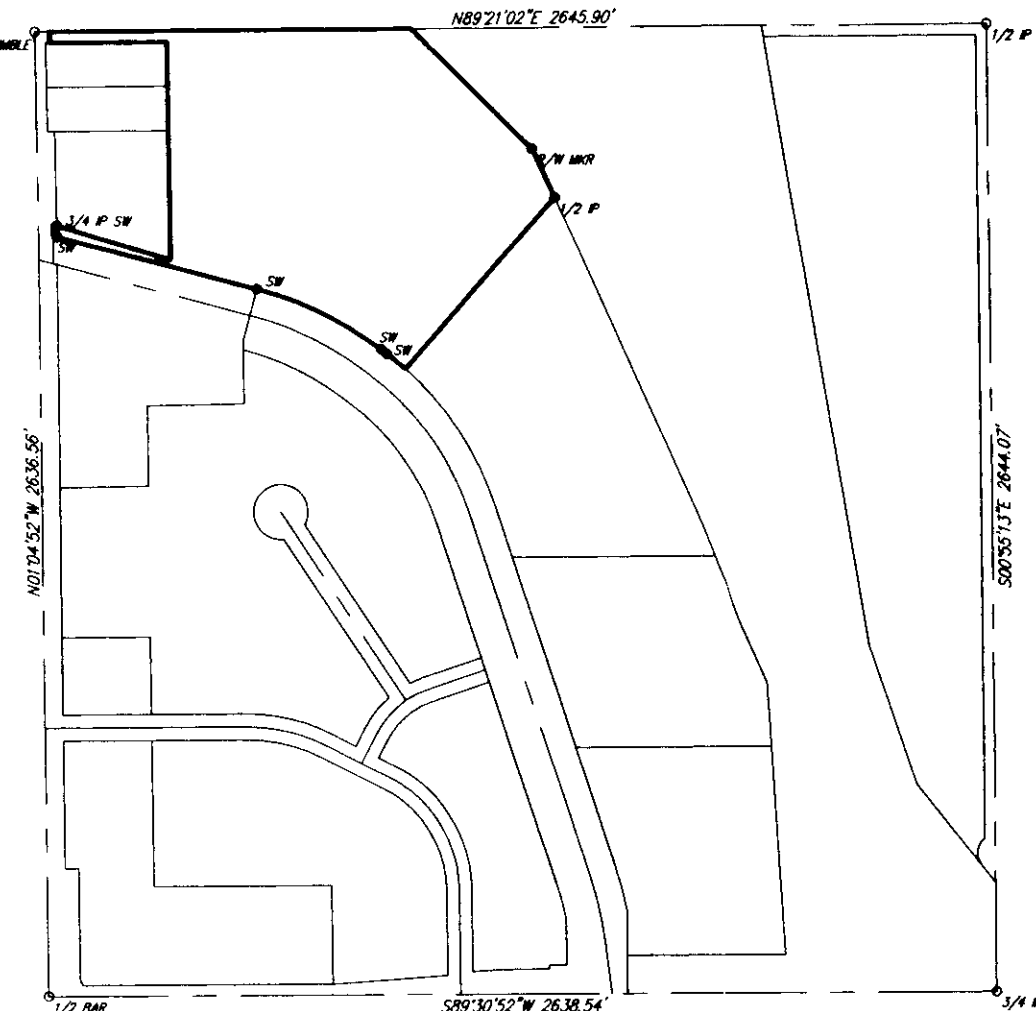


C.A.C. = Complete Access Control

Benchmark: Square Cut on top of curb between S 2 Curb inlets on NEly side of Santa Fe Ave. near the SEly most corner of Subject Property. Elevation = 1272.23 NGVD

Minimum Building Pad Elevation for Lowest Opening into Structures	
Lots 1, 2 & 3 Block A	1275.0 NGVD
Lots 1, 2 & 3 Block B	1275.0 NGVD

- 1/2" = CITY OF WICHITA CONTROL THIMBLE (FOUND)
- 1/2" BAR = 1/2" STEEL BAR IN 5" HOLE (FOUND)
- 5/8" BAR = 5/8" STEEL BAR (FOUND)
- 1/2" P = 1/2" IRON PIPE (FOUND)
- 3/4" P = 3/4" IRON PIPE (FOUND)
- 3/4" P SM = 3/4" IRON PIPE W/SANDLEWOOD CAP (FOUND)
- SM = 1/2" IRON PIPE W/SANDLEWOOD CAP (FOUND)
- R/W MKR = 4"x4" CONCRETE RIGHT-OF-WAY MARKER (FOUND)



State of Kansas) SS  
Sedgwick County)

We, Savoy Company, P.A., Surveyors in aforesaid county and state do hereby certify that, under the supervision of the undersigned, we have surveyed and platted "M A A ADDITION", Wichita, Sedgwick County, Kansas and that the accompanying plat is a true and correct exhibit of the property surveyed, described as follows:

That part of the SW1/4 of Sec. 16, Twp. 28-S, R-1-E of the 6th P.M., Sedgwick County, Kansas, lying North and East to the Riverside Drainage Canal as condemned in District Court Case No. 48670 and north of the North line of Brooking By-Pass 2nd Addition and west of the West line of Interstate Highway No. 235 as condemned in District Court Case A-76777, Except the south 240 feet of the north 270 feet of the west 363 feet thereof and Except Akman Addition, and Except the west 40 feet for highway.

All Public easements and dedications being vacated by virtue of K.S.A. 12-512(b).

Savoy Company, P.A.

Date: 17 Jan 08  
*Mark A. Savoy*  
Mark A. Savoy PLS #788  
Surveyor

Know all men by these presents that I, the undersigned, have caused the land described in the surveyors certificate to be platted into Lots, Blocks and Streets to be known as "M A A ADDITION", Wichita, Sedgwick County, Kansas. The streets are hereby dedicated to and for the use of the public. The utility easements are hereby granted as indicated for the construction and maintenance of all public utilities. The drainage and utility easements are hereby granted as indicated for the construction and maintenance of all public utilities and for drainage purposes. Reserve "A" is hereby reserved for a Detention Pond and for drainage purposes. Reserve "A" shall be owned and maintained by the owners of Lots 2 & 3, Block A. Reserve "B" is hereby reserved as utility easement and for drainage purposes. Reserve "B" shall be owned and maintained by the Riverside Drainage District. Access controls are hereby granted to the appropriate governing body as indicated on the face of the plat. A drainage plan has been developed for this plat and all drainage easements and rights-of-way shall remain at established grades or modified with the approval of the Engineer of the appropriate governing body, and unobstructed to allow for the conveyance of stormwater. The Minimum Building Pad elevation for Lowest Opening into Structures for all Lots is 1275.0 NGVD.

MAA, L.C., a Kansas Limited Liability company  
*Brad Phillips*  
Brad Phillips Officer

*Brook Phillips*  
Brook Phillips Officer

State of Kansas) SS  
Sedgwick County)

The foregoing instrument acknowledged before me, this \_\_\_\_\_ day of Jan, 2008, by Brad Phillips and Brook Phillips, Officers of MAA, L.C., a Kansas Limited Liability company, on behalf of the company.

My App't. Exp \_\_\_\_\_  
*Kathy Smith*  
Kathy Smith Notary Public

Reviewed in accordance with K.S.A. 58-2005 on this \_\_\_\_\_ day of \_\_\_\_\_, 2008.

Deputy County Surveyor  
Sedgwick County, Kansas  
*Tricia L. Robello*, L.S. #1246

This plat of "M A A ADDITION", Wichita, Sedgwick County, Kansas, has been submitted to and approved by the Wichita-Sedgwick County Metropolitan Area Planning Commission, Wichita, Kansas. Dated this \_\_\_\_\_ day of \_\_\_\_\_, 2008.

Wichita-Sedgwick County Metropolitan Area Planning Commission

*M.S. Mitchell* Chairman

*John L. Schlegel* Secretary

This plat approved and all dedications shown hereon, are hereby accepted by the City Council of the City of Wichita, Kansas, dated this \_\_\_\_\_ day of \_\_\_\_\_, 2008.

*Carl Brewer* Mayor

*Karen Sublett* City Clerk

Entered on transfer record this \_\_\_\_\_ day of \_\_\_\_\_, 2008.

*Donald Brace* County Clerk

State of Kansas) SS  
Sedgwick County)

This is to certify that this plat has been filed for record in the office of the Register of Deeds, this \_\_\_\_\_ day of \_\_\_\_\_, 2008, at \_\_\_\_\_ o'clock \_\_\_\_\_ M: and is duly recorded.

*Bill Meek* Register of Deeds

*Tonya Buckingham* Deputy



Savoy Company, P.A.  
Land Surveyors

PH (316) 265-0005  
FAX (316) 265-0275