

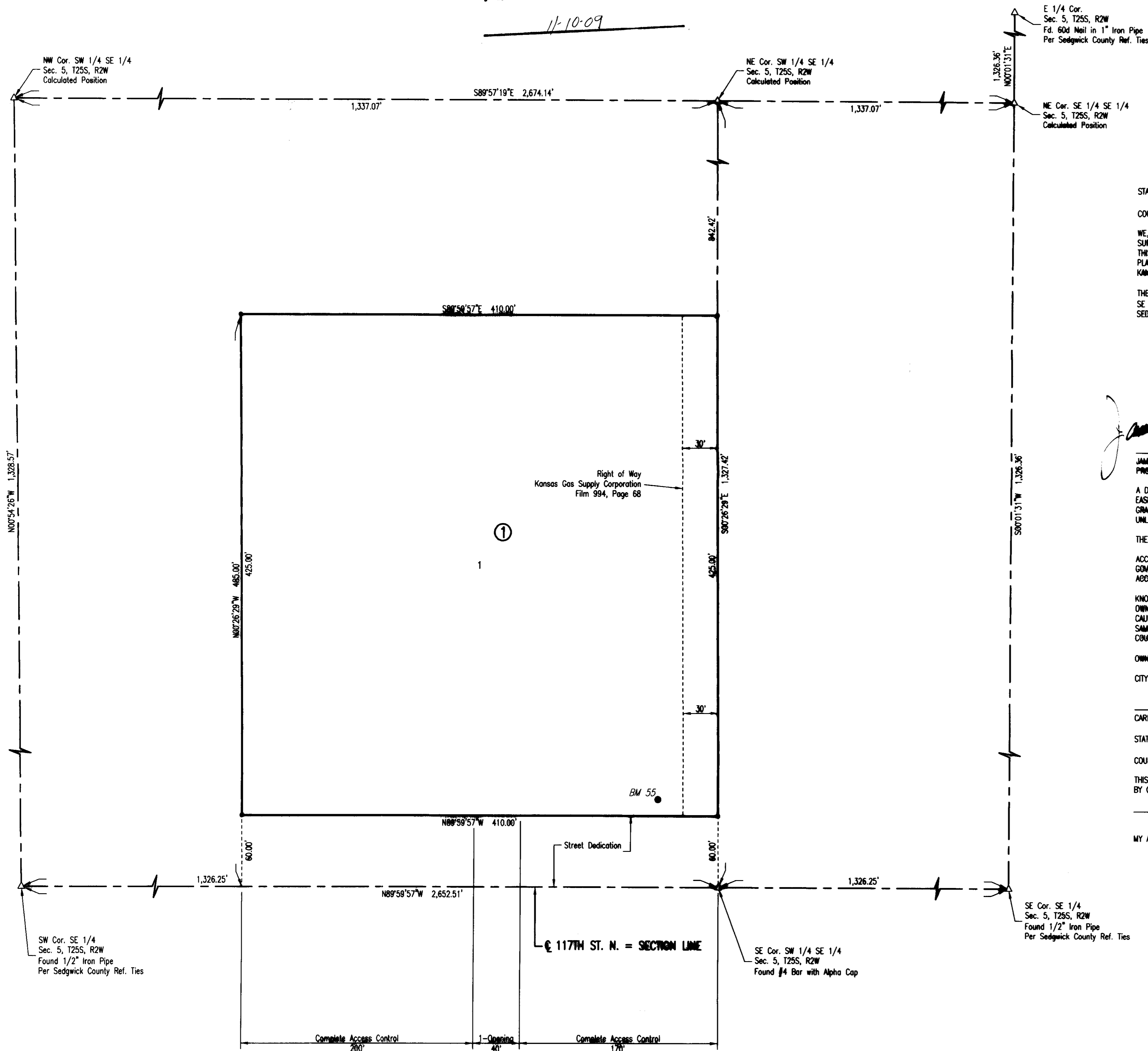
FILE COPY

ASR MR-55 WELL SITE ADDITION

AN ADDITION TO SEDGWICK COUNTY, KANSAS

FINAL TRACING REC'D

1/10/09



SCALE: 1" = 50'

- = 1/2" REBAR W/PEC CAP UNLESS OTHERWISE NOTED
- △ = SECTION CORNER

BENCHMARKS

BM 55

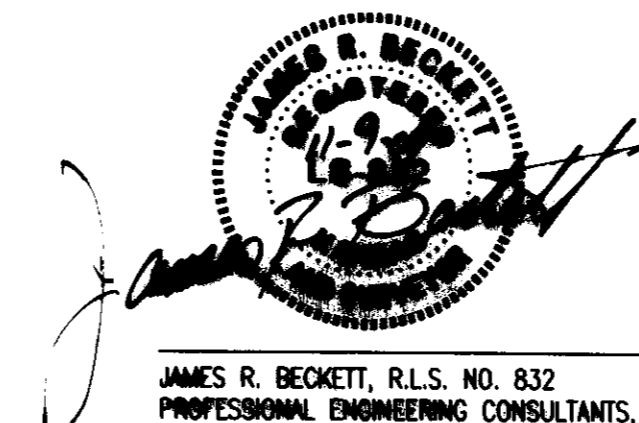
A CHISELED SQUARE IN THE CENTER OF THE DOORWAY, ON THE CONCRETE FLOOR OF THE EXISTING BUILDING, LOCATED AT THE CITY OF WICHITA WELL HOUSE #55, ON THE NORTH SIDE OF 117TH ST. NORTH, WEST OF 183RD ST. WEST, IN SEDGWICK COUNTY.

ELEV. 1404.22 NAVD88

STATE OF KANSAS)
COUNTY OF SEDGWICK) SS

WE, PROFESSIONAL ENGINEERING CONSULTANTS, P.A., ENGINEERS AND SURVEYORS, BY AFORESAID STATE AND COUNTY, DO HEREBY CERTIFY THAT ON THIS 10TH DAY OF JANUARY, 2009, WE HAVE SURVEYED AND PLATTED ASR MR-55 WELL SITE ADDITION, AN ADDITION TO SEDGWICK COUNTY, KANSAS, INTO A LOT AND A BLOCK. THE SAME BEING DESCRIBED AS FOLLOWS:

THE SOUTH 485.00 FEET OF THE EAST 410.00 FEET OF THE SW 1/4 OF THE SE 1/4, SECTION 5, TOWNSHIP 25 SOUTH, RANGE 2 WEST OF THE 6TH P.M., SEDGWICK COUNTY, KANSAS.



JAMES R. BECKETT, R.L.S. NO. 832
PROFESSIONAL ENGINEERING CONSULTANTS, P.A.

A DRAINAGE PLAN HAS BEEN APPROVED FOR THIS PLAT. ALL DRAINAGE EASEMENTS, RESERVES, AND RIGHTS-OF-WAY SHALL REMAIN AT ESTABLISHED GRADES AND UNOBSTRUCTED TO ALLOW FOR THE CONVEYANCE OF STORMWATER, UNLESS MODIFIED WITH THE APPROVAL OF THE COUNTY ENGINEER.

THE STREETS ARE HEREBY DEDICATED TO AND FOR THE USE OF THE PUBLIC.

ACCESS CONTROLS AS INDICATED ARE HEREBY GRANTED TO THE APPROPRIATE GOVERNING BODY AND SHALL BE IN ACCORDANCE WITH THE SEDGWICK COUNTY ACCESS MANAGEMENT STANDARDS.

KNOW ALL MEN BY THESE PRESENTS THAT WE, THE UNDERSIGNED PROPERTY OWNERS OF THE LAND AS ABOVE SET FORTH IN THE SURVEYOR'S CERTIFICATE, HAVE CAUSED THE LAND TO BE SURVEYED AND PLATTED INTO A LOT AND A BLOCK. THE SAME TO BE KNOWN AS ASR MR-55 WELL SITE ADDITION, AN ADDITION TO SEDGWICK COUNTY, KANSAS.

OWNER(S):

CITY OF WICHITA, KANSAS MUNICIPAL CORPORATION

CARL BREWER, MAYOR

STATE OF KANSAS)
COUNTY OF SEDGWICK) SS

THIS INSTRUMENT WAS ACKNOWLEDGED BEFORE ME ON _____, 2009, BY CARL BREWER, MAYOR, CITY OF WICHITA, KANSAS, MUNICIPAL CORPORATION.

_____, NOTARY PUBLIC

MY APPOINTMENT EXPIRES: _____

THIS PLAT OF ASR MR-55 WELL SITE ADDITION HAS BEEN SUBMITTED TO AND APPROVED BY THE WICHITA-SEDGWICK COUNTY METROPOLITAN AREA PLANNING COMMISSION, WICHITA, KANSAS.

DATED THIS ____ DAY OF _____, 2009.

WICHITA-SEDGWICK COUNTY METROPOLITAN AREA PLANNING COMMISSION

_____, CHAIR

G. NELSON VAN FLEET

_____, SECRETARY

JOHN L. SCHLEGEL

REVIEWED IN ACCORDANCE WITH K.S.A. 58-2005 ON THIS _____ DAY OF _____, 2009.

TRICIA L. ROBELLO, LS #1246
DEPUTY COUNTY SURVEYOR
SEDGWICK COUNTY KANSAS

THIS PLAT IS APPROVED AND ALL DEDICATIONS SHOWN HEREON, IF ANY, ARE ACCEPTED BY THE BOARD OF COUNTY COMMISSIONERS OF SEDGWICK COUNTY, KANSAS, THIS _____ DAY OF _____, 2009.

_____, CHAIRMAN

KELLY PARKS

_____, COUNTY CLERK

KELLY B. ARNOLD

ENTERED ON TRANSFER RECORD THIS _____ DAY OF _____, 2009.

_____, COUNTY CLERK

KELLY B. ARNOLD

THIS IS TO CERTIFY THAT THIS INSTRUMENT WAS FILED FOR RECORD IN THE REGISTER OF DEEDS OFFICE AT _____ A.M. - P.M., ON THE _____ DAY OF _____, 2009.

_____, REGISTER OF DEEDS

BILL MEEK

_____, DEPUTY

TONYA BUCKINGHAM