

We, Reiss and Goodness, Inc., Land Surveyors in aforesaid county and state, do hereby certify that, under the supervision of the undersigned, we have surveyed and platted Rentals Sales Estate Addition, Wichita, Sedgwick, Kansas, and that the accompanying plat is a true and correct exhibit of the property surveyed, described as follows:

The foregoing instrument acknowledged before me, this 20<sup>th</sup> day of October, 2009, by Bounleng Kammavongsa and Phoukhong Phetkhamchanh.

*Jennifer L. Haines*  
Jennifer L. Haines  
Notary Public  
My appointment expires: 1-26-12

LEGAL DESCRIPTION:

Beginning at the Southwest corner of the North Half of the North Half of the Northwest Quarter of Section 20, Township 26 South, Range 1 East of the 6<sup>th</sup> P.M., Sedgwick County, Kansas; thence North on the Section Line 100 feet; thence East parallel to the South line of said North Half of the North Half of the Northwest Quarter 180 feet; thence North 87 feet; thence East 518.82 feet; thence South 187 feet; thence West 698.82 feet to the point of beginning, EXCEPT that part taken for street purposes.

We, Garden Plain State Bank, holders of a mortgage on the above described property, do hereby consent to the plat of Rentals Sales Estate Addition, Wichita, Sedgwick County, Kansas.

*Patrick F. Walden*  
Patrick F. Walden, President and C.E.O.

Reiss and Goodness, Inc.

State of Kansas)  
County of Sedgwick) SS

*Robert G. Previtara*  
Robert G. Previtara  
Land Surveyor  
Oct. 20, 2009

The foregoing instrument was acknowledged before me this 21<sup>st</sup> day of October, 2009, by Patrick F. Walden, President and C.E.O., on behalf of Garden Plain State Bank.

*Amy L. Hammond*  
Amy L. Hammond  
Notary Public  
7/9/2013

My Appointment Expires: 7/9/2013

This plat of "Rentals Sales Estate Addition", Wichita, Sedgwick County, Kansas, has been submitted to and approved by the Wichita-Sedgwick County Metropolitan Area Planning Commission, Wichita, Kansas. Dated this \_\_\_\_\_ day of \_\_\_\_\_, 2009.

Wichita-Sedgwick County Metropolitan Area Planning Commission

Chairman  
*G. Nelson Van Fleet*  
Secretary  
*John L. Schlegel*

This plat approved and all dedications shown hereon accepted by the City Council of the City of Wichita, Kansas, this \_\_\_\_\_ day of \_\_\_\_\_, 2009.

At the Direction of the City Council  
Mayor  
*Carl Brewer*  
City Clerk  
*Karen Sublett*

Reviewed in accordance with K.S.A. 58-2005 on this \_\_\_\_\_ day of \_\_\_\_\_, 2009.

Deputy County Surveyor  
Sedgwick County, Kansas  
*Tricia L. Robello, LS #1246*

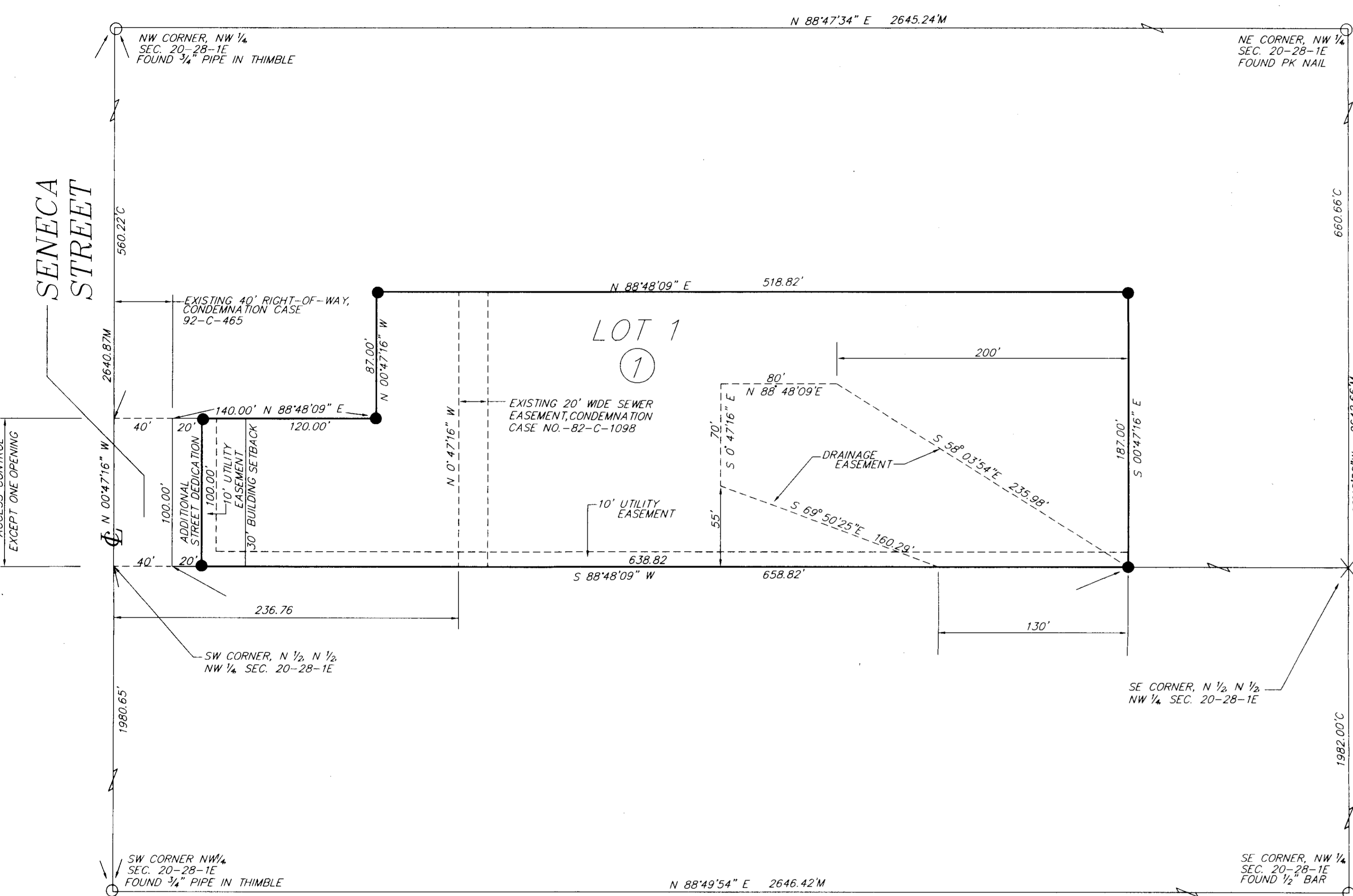
Entered on transfer record this \_\_\_\_\_ day of \_\_\_\_\_, 2009

County Clerk  
*Kelly B. Arnold*

State of Kansas)  
Sedgwick County) SS

This is to certify that this plat has been filed for record in the office of the Register of Deeds, this \_\_\_\_\_ day of \_\_\_\_\_, 2009 at \_\_\_\_\_ o'clock \_\_\_\_\_ M., and is duly recorded.

Register of Deeds  
*Bill Meek*  
Deputy  
*Tonya Buckingham*

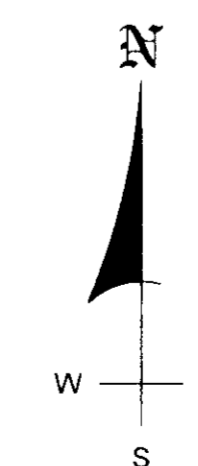


Know all men by these presents that we, the undersigned, have caused the land described in the surveyor's certificate to be platted into a Lot, a Block, and a Street to be known as "Rentals Sales Estate Addition", Wichita, Sedgwick County, Kansas. Utility easements are hereby granted for the construction and maintenance of all public utilities. Drainage easements are hereby granted to the public as indicated for drainage purposes. The street is hereby dedicated to and for the use of the public. Access Controls as indicated are hereby granted to the appropriate governing body. A drainage plan has been developed for this plat; all drainage easements and reserves shall remain at established grades, or as modified with the approval of the City Engineer, and unobstructed to allow for the conveyance of storm water.

*Bounleng Kammavongsa*  
Bounleng Kammavongsa

*Phoukhong Phetkhamchanh*  
Phoukhong Phetkhamchanh

- LEGEND  
C = CALCULATED DISTANCE  
M = MEASURED DISTANCE  
X = CALCULATED POINT  
● = SET 5/8" Rebar LS#77



0' 50'  
SCALE: 1" = 50'

FINAL PLAT

RENTALS SALES ESTATE ADDITION

WICHITA, SEDGWICK COUNTY, KANSAS

2009

FINAL TRACING REC'D

10-23-09

FILE COPY

SUB 2009-61