

FINAL TRACING REC'D

1-26-10
SUB 2009-74

ASR MR-51 WELL SITE ADDITION

AN ADDITION TO SEDGWICK COUNTY, KANSAS



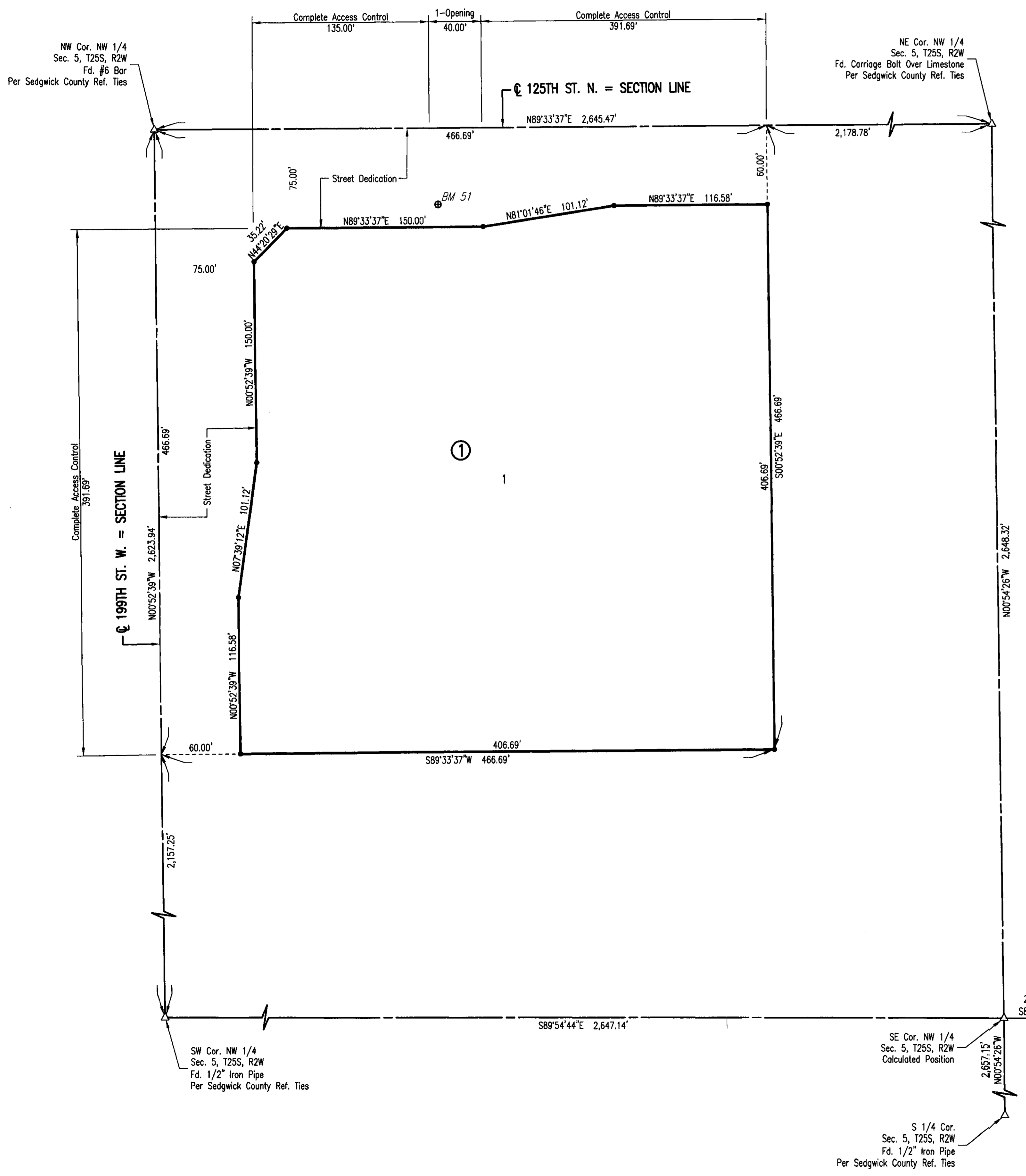
SCALE: 1" = 50'

- = 1/2" REBAR W/PEC CAP UNLESS OTHERWISE NOTED
- △ = SECTION CORNER

BENCHMARKS

BM 51
A CHISELED SQUARE ON THE NORTHEAST CORNER OF A CONCRETE WELL PUMP BASE, LOCATED AT THE CITY OF WICHITA WELL HOUSE #51, AT THE SOUTHEAST CORNER OF INTERSECTION OF 125TH ST. NORTH AND 199TH ST. WEST, IN SEDGWICK COUNTY.

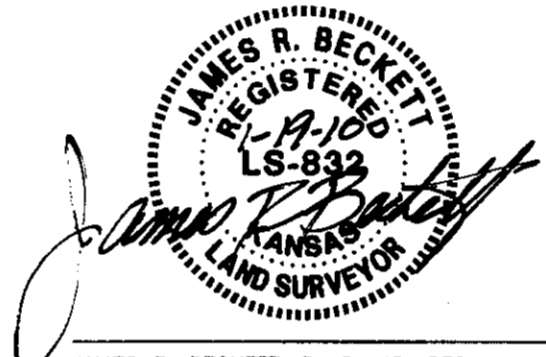
ELEV. 1409.27 NAVD88



STATE OF KANSAS }
COUNTY OF SEDGWICK } SS

WE, PROFESSIONAL ENGINEERING CONSULTANTS, P.A., ENGINEERS AND SURVEYORS IN AFORESAID STATE AND COUNTY, DO HEREBY CERTIFY THAT ON THIS 17TH DAY OF DECEMBER, 2009, WE HAVE SURVEYED AND PLATTED ASR MR-51 WELL SITE ADDITION, AN ADDITION TO SEDGWICK COUNTY, KANSAS, INTO A LOT AND A BLOCK. THE SAME BEING DESCRIBED AS FOLLOWS:

THE NORTH 466.69 FEET OF THE WEST 466.69 FEET OF THE NORTHWEST QUARTER OF SECTION 5, TOWNSHIP 25 SOUTH, RANGE 2 WEST, OF THE 6TH P.M., SEDGWICK COUNTY, KANSAS.



JAMES R. BECKETT, R.L.S. NO. 832
PROFESSIONAL ENGINEERING CONSULTANTS, P.A.

A DRAINAGE PLAN HAS BEEN APPROVED FOR THIS PLAT. ALL DRAINAGE EASEMENTS, RESERVES, AND RIGHTS-OF-WAY SHALL REMAIN AT ESTABLISHED GRADES AND UNOBSTRUCTED TO ALLOW FOR THE CONVEYANCE OF STORMWATER, UNLESS MODIFIED WITH THE APPROVAL OF THE COUNTY ENGINEER.

THE STREETS ARE HEREBY DEDICATED TO AND FOR THE USE OF THE PUBLIC.

ACCESS CONTROLS AS INDICATED ARE HEREBY GRANTED TO THE APPROPRIATE GOVERNING BODY AND SHALL BE IN ACCORDANCE WITH THE SEDGWICK COUNTY ACCESS MANAGEMENT STANDARDS.

KNOW ALL MEN BY THESE PRESENTS THAT WE, THE UNDERSIGNED PROPERTY OWNERS OF THE LAND AS ABOVE SET FORTH IN THE SURVEYOR'S CERTIFICATE, HAVE CAUSED THE LAND TO BE SURVEYED AND PLATTED INTO A LOT AND A BLOCK. THE SAME TO BE KNOWN AS ASR MR-51 WELL SITE ADDITION, AN ADDITION TO SEDGWICK COUNTY, KANSAS.

OWNER:
CITY OF WICHITA, KANSAS MUNICIPAL CORPORATION

CARL BREWER, MAYOR

STATE OF KANSAS }
COUNTY OF SEDGWICK } SS

THIS INSTRUMENT WAS ACKNOWLEDGED BEFORE ME ON _____, 2010,
BY CARL BREWER.

_____, NOTARY PUBLIC

MY APPOINTMENT EXPIRES: _____

THIS PLAT OF ASR MR-51 WELL SITE ADDITION HAS BEEN SUBMITTED TO AND APPROVED BY THE WICHITA-SEGWICK COUNTY METROPOLITAN AREA PLANNING COMMISSION, WICHITA, KANSAS.

DATED THIS ____ DAY OF _____, 2010.

WICHITA-SEGWICK COUNTY METROPOLITAN AREA PLANNING COMMISSION

_____, CHAIR
G. NELSON VAN FLEET

_____, SECRETARY
JOHN L. SCHLEGEL

REVIEWED IN ACCORDANCE WITH K.S.A. 58-2005 ON THIS _____ DAY OF _____, 2010.

TRICIA L. ROBELLO, LS #1246
DEPUTY COUNTY SURVEYOR
SEGWICK COUNTY KANSAS

THIS PLAT IS APPROVED AND ALL DEDICATIONS SHOWN HEREON, IF ANY, ARE ACCEPTED BY THE BOARD OF COUNTY COMMISSIONERS OF SEDGWICK COUNTY, KANSAS, THIS _____ DAY OF _____, 2010.

_____, CHAIRMAN
KARL PETERJOHN

_____, COUNTY CLERK
KELLY B. ARNOLD

ENTERED ON TRANSFER RECORD THIS _____ DAY OF _____, 2010.

_____, COUNTY CLERK
KELLY B. ARNOLD

THIS IS TO CERTIFY THAT THIS INSTRUMENT WAS FILED FOR RECORD IN THE REGISTER OF DEEDS OFFICE AT _____ A.M. - P.M., ON THE _____ DAY OF _____, 2010.

_____, REGISTER OF DEEDS
BILL MEEK

_____, DEPUTY
TONYA BUCKINGHAM

Plt. Scale 1:50 01-19-2010 2:36:13 PM By: AEE
 C:\2007\07685\005\ASR Plats\07685-005 Final MR-51