

**FINAL PLAT
FIREPOINT ADDITION
Wichita, Sedgwick County, Kansas**

State of Kansas) SS
Sedgwick County)

We, Savoy Company, P.A., Surveyors in aforesaid county and state do hereby certify that, under the supervision of the undersigned, we have surveyed and platted "FIREPOINT ADDITION", Wichita, Sedgwick County, Kansas and that the accompanying plat is a true and correct exhibit of the property surveyed, described as:

Lot 18, Comotara Industrial Park Fifth Addition to Wichita, Sedgwick County, Kansas, AND All of Lots 1 and 2, Block 4, Lots 2, 3 and part of Lots 4 and 5, Block 3, and part of Toben Street in Mediterranean Plaza Addition to Wichita, Sedgwick County, Kansas, more particularly described as follows:

Beginning at the N.E. Corner of Lot 2, in said Block 4; thence S00°56'47"E along the east line of said Lot 2, 565.43 feet; thence S44°40'15"W along the southeasterly line of said Lot 2 and extended, 433.87 feet to the easterly most corner of Lot 5, in said Block 3; thence N45°19'55"W along the northeasterly line of said Lot 5, 7.10 feet to the P.C. of a curve to the left having a radius of 65 feet; thence westerly along said curve and through a central angle of 46°03'43" an arc distance of 52.26 feet; thence S88°36'22"W, 150.32 feet to the P.C. of a curve to the right having a radius of 135 feet; thence northwesterly along said curve and through a central angle of 45°24'40" an arc distance of 107.00 feet; thence N45°58'58"W, 219.57 feet; thence S44°01'02"W, 215.00 feet to the southwesterly line of Lot 4, in said Block 3; thence N45°58'58"W along the southwesterly line of said Lot 4, 180.20 feet; thence N51°45'01"W along the southwesterly line of said Lot 4, 158.92 feet to the westerly most S.W. Corner of said Lot 4; thence N09°02'53"E along the westerly line of Lot 3, in said Block 3, 31.49 feet; thence N00°07'53"W along the west line of said Lots 3 and 2, 1051.55 feet to the N.W. Corner of Lot 2, in said Block 3; thence N89°07'38"E along the north line of said Lot 2 and the north line of said Lot 18, Comotara Industrial Park Fifth Addition, 546.21 feet to the N.E. Corner of said Lot 18; thence S00°56'47"E along the east line of said Lot 18, 504.23 feet to the north line of Lot 1, in said Block 4; thence N89°16'32"E along the north line of Lots 1 and 2, in said Block 3, 600.09 feet to the place of beginning.

All Public easements and dedications being vacated by virtue of K.S.A. 12-512(b).
Savoy Company, P.A.

Date 4th day of March 2010
Mark A. Savoy, RLS #788
Surveyor

Know all men by these presents that We, the undersigned, have caused the land described in the surveyors certificate to be platted into Lots, Blocks and a Street to be known as "FIREPOINT ADDITION", Wichita, Sedgwick County, Kansas. The utility easements are hereby granted as indicated for the construction and maintenance of all public utilities. The drainage easements are hereby granted as indicated for drainage purposes. A drainage plan has been developed for this plat and all drainage easements, rights-of-way, or reserves shall remain at established grades, or as modified with the approval of the City Engineer, and unobstructed to allow for the conveyance of stormwater. Access Control is hereby granted to the appropriate governing body and is as indicated on the face of the plat. Minimum Pad Elevation is as indicated on the face of the plat.

Webb Road, LLC
Name: CHRISTIAN A. ABLEH
Title: member
The State Bank of Kansas
Name: JAC. L. JENSIK
Title: President

State of Kansas) SS
Sedgwick County)
The foregoing instrument acknowledged before me, this 4th day of March 2010, by Christian A. Ableh of Webb Road, LLC, on behalf of the Company.
Deborah L. Oden Notary Public

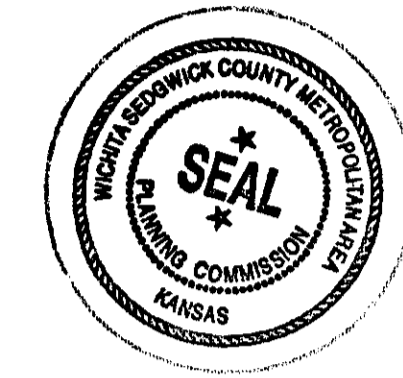
My App't. Exp. 8/12/2010
DEBORAH L. ODEN
NOTARY PUBLIC
STATE OF KANSAS
My App't. Exp. _____

State of Kansas) SS
Sedgwick County)
The foregoing instrument acknowledged before me, this 4th day of March 2010, by Jac. L. Jenzik of The State Bank of Kansas on behalf of the Company.
Peggy A. Anderson Notary Public
My App't. Exp. 12-28-13

PEGGY A. ANDERSON
Notary Public - State of Kansas
My App't. Expires 12-28-13

This plat of "FIREPOINT ADDITION", Wichita, Sedgwick County, Kansas, has been submitted to and approved by the Wichita-Sedgwick County Metropolitan Area Planning Commission, Wichita, Kansas.

Dated this 4th day of March, 2010.
Wichita-Sedgwick County Metropolitan Area Planning Commission



G. Nelson Van Fleet Chair
G. Nelson Van Fleet
John L. Schlegel Secretary
John L. Schlegel

This plat approved and all dedications shown hereon, accepted by the City Council of the City of Wichita, Kansas, this _____ day of _____, 2010.

Carl Brewer Mayor

Karen Sublett City Clerk

Reviewed in accordance with K.S.A. 58-2005 on this 4th day of March, 2010.
J. Robello Deputy County Surveyor
Robello, LS #1246
Sedgwick County Kansas

Entered on transfer record this _____ day of _____, 2010.

Kelly Arnold County Clerk

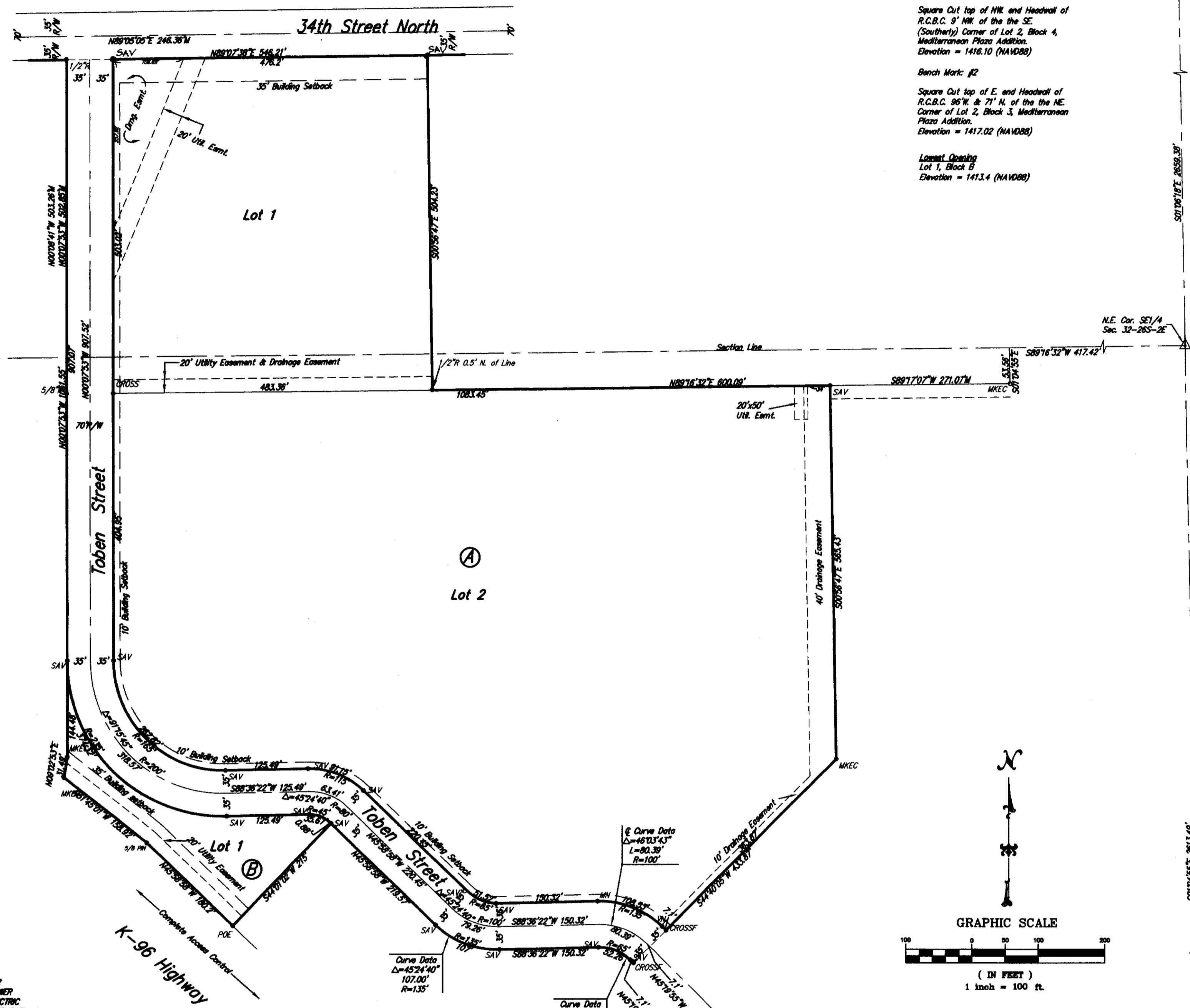
State of Kansas) SS
Sedgwick County)
This is to certify that this plat has been filed for record in the office of the Register of Deeds, this _____ day of _____, 2010, at o'clock _____ M. and is duly recorded.

Bill Meek Register of Deeds

Tonya Buckingham Deputy

Note:
This plat is subject to the Provisions of Firepoint Planned Unit Development, PUD-23 on file with the Metropolitan Area Planning Dept.

Savoy Company, P.A.
Land Surveyors
433 S. Hydraulic, Wichita, KS 67211-1911
PH (316) 265-0005
FAX (316) 265-0275
www.savoyco.com



- LEGEND**
- G = GAS MAIN
 - W = WATER MAIN
 - SS = SANITARY SEWER
 - SWS = STORM WATER SEWER
 - USE = UNDER GROUND ELECTRIC
 - UT = UNDER GROUND TELEPHONE
- B.M.** BENCH MARK
RELE. PED. TELEPHONE PEDESTAL
E.B. ELECTRIC BOX
F.H. FIRE HYDRANT
ICV IRRIGATION CONTROL VALVE
L.P. LIGHT POLE
W.M. WATER METER
W.V. WATER VALVE

- LEGEND:**
- P = Plotted
 - M = Measured
 - D = Described
 - C = Calculated
 - Ch = Chord
- * MREC = 1/2" REBAR W/MREC CAP (FOUND)
 - * PSE = 1/2" REBAR W/POE CAP (FOUND)
 - * SAV = 1/2" REBAR W/SAV CAP (SET)
 - * TW = CITY OF WICHITA CONTROL (FOUND)
 - * 5/8" R = 5/8" REBAR (FOUND)
 - * 1/2" R = 1/2" REBAR (FOUND)
 - * 3/4" IP = 3/4" IRON PIPE (FOUND)
 - * W = 3/4" WIRE (SET)
 - * W = CHISELED V-WITCH (SET)
 - * CROSS = CHISELED CROSS (FOUND)
 - * CROSS = CHISELED CROSS (SET)

POE & ASSOCIATES, INC.
CONSULTING ENGINEERS
5940 E. Central, Suite 200W Wichita, KS 67208 316/685-4114 FAX 316/685-4444

FINAL TRACING RECD FILE COPY