

FINAL TRACING REC'D

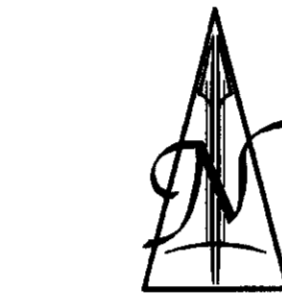
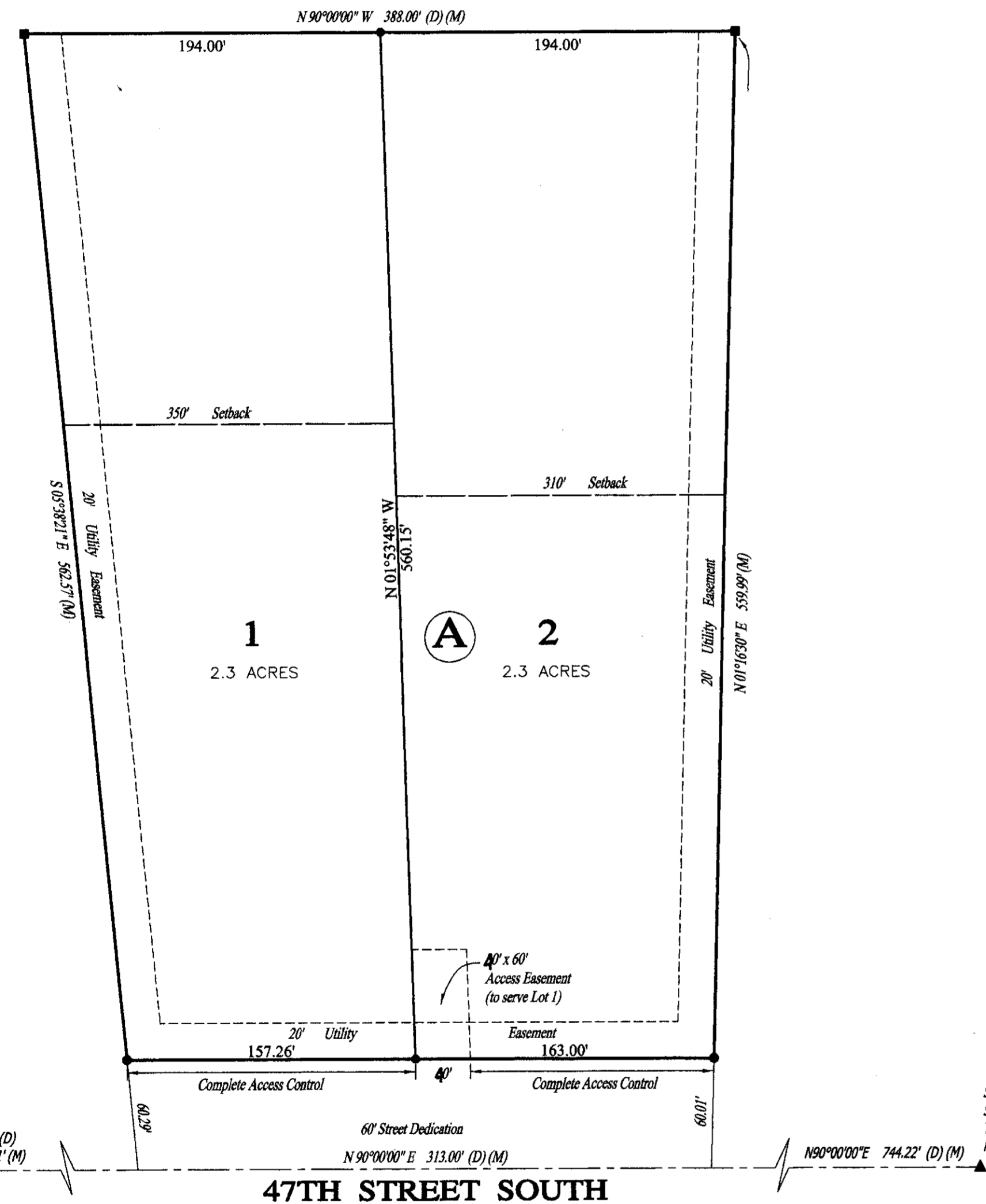
SUB 2007-00110

7-15-10

FINAL PLAT OF "AFTON LAKESIDE ESTATES SECOND ADDITION"

SEDGWICK COUNTY, KANSAS

IN THE SOUTHWEST QUARTER OF SECTION 14 TOWNSHIP 28 SOUTH, RANGE 3 WEST OF THE SIXTH P.M.



SCALE : 1" = 60' Bearing Basis Assumed

- Legend for symbols: triangle for section corner, square for #4 rebar with I.D. cap, circle for #4 rebar set with I.D. cap, (D) for described in deed, (M) for measured.

State of Kansas ) Sedgwick County ) ss

Terra Tech Land Surveying, Inc., a corporation registered and authorized to practice Land Surveying in the State of Kansas, hereby certifies that it has surveyed and platted "AFTON LAKESIDE ESTATES SECOND ADDITION", Sedgwick County, Kansas, and the accompanying plat is a true and correct exhibit of such survey described as:

Beginning 1,580 feet East of the Southwest corner of the Southwest Quarter of Section 14, Township 28 South, Range 3 West of the Sixth Principal Meridian, Sedgwick County, Kansas; thence East 313 feet; thence North 620 feet; thence West 388 feet; thence Southeast to the Point of Beginning.

Said tract contains 5.0 acres and is subject to any easements, agreements, rights-of-way and restrictions of record.

TERRA TECH LAND SURVEYING, INC.

Michele Webster LS#958 Date



Know all men by these presents that the undersigned, owners of the land described in the Surveyor's Certificate, have caused the same to be surveyed and platted into Lots, a Block, and a Street, to be known as "AFTON LAKESIDE ESTATES SECOND ADDITION", Sedgwick County, Kansas. The utility easements as shown hereon are hereby granted for the construction and maintenance of all public utilities. Access controls shall be as depicted on the face of the plat and are hereby granted to the appropriate governing body. A drainage plan has been developed for this plat and all drainage easements, rights-of-way, or reserves shall remain at established grades or as modified with the approval of the County Engineer, and unobstructed to allow for the conveyance of storm water.

LIGHTS, CAMERA, ACTION, INC.

Bob Copeland, President Tammy Copeland, Trustee

State of Kansas ) Sedgwick County ) ss

This instrument was acknowledged before me this \_\_\_ day of \_\_\_, 2010 by Bob Copeland, President, and Tammy Copeland, Trustee, of Lights, Camera, Action, Inc., a Kansas corporation, on behalf of the corporation.

Notary Public

My Commission Expires: \_\_\_\_\_

This plat of "AFTON LAKESIDE ESTATES SECOND ADDITION", Sedgwick County, Kansas, has been submitted to and approved by the Wichita-Sedgwick County Metropolitan Area Planning Commission, Wichita, Kansas.

Dated this \_\_\_ day of \_\_\_, 2007.

WICHITA-SEDGWICK COUNTY METROPOLITAN AREA PLANNING COMMISSION

G. Nelson VanFleet, Chairman

John L. Schlegel, Secretary

State of Kansas ) Sedgwick County ) ss

The dedications shown on the plat, if any, are hereby accepted by the Board of County Commissioners, Sedgwick County, Kansas, on \_\_\_, 2010

(Seal)

Karl Peterjohn, Commission Chairman

Kelly Arnold, County Clerk

(Seal)

Entered on transfer record this \_\_\_ day of \_\_\_, 2010

Kelly Arnold, County Clerk

State of Kansas ) Sedgwick County ) ss

This is to certify that this instrument was filed for record in the Register of Deeds Office, at \_\_\_ o'clock \_\_\_, M., on the \_\_\_ day of \_\_\_, 2010

Bill Meek, Register of Deeds

Tonya Buckingham, Deputy

Reviewed in accordance with K.S.A. 58-2005 on this \_\_\_ day of \_\_\_, 2010

Tricia L. Robello, LS#1246 Deputy County Surveyor Sedgwick County, Kansas

Southwest Corner of the SW 1/4 of Sec. 14, T28S, R3W of the 6th P. M. (1/2" Iron Pipe)

Southeast Corner of the SW 1/4 of Sec. 14, T28S, R3W of the 6th P. M. (#6 Rebar)