

FINAL TRACING RECORD

5-12-10

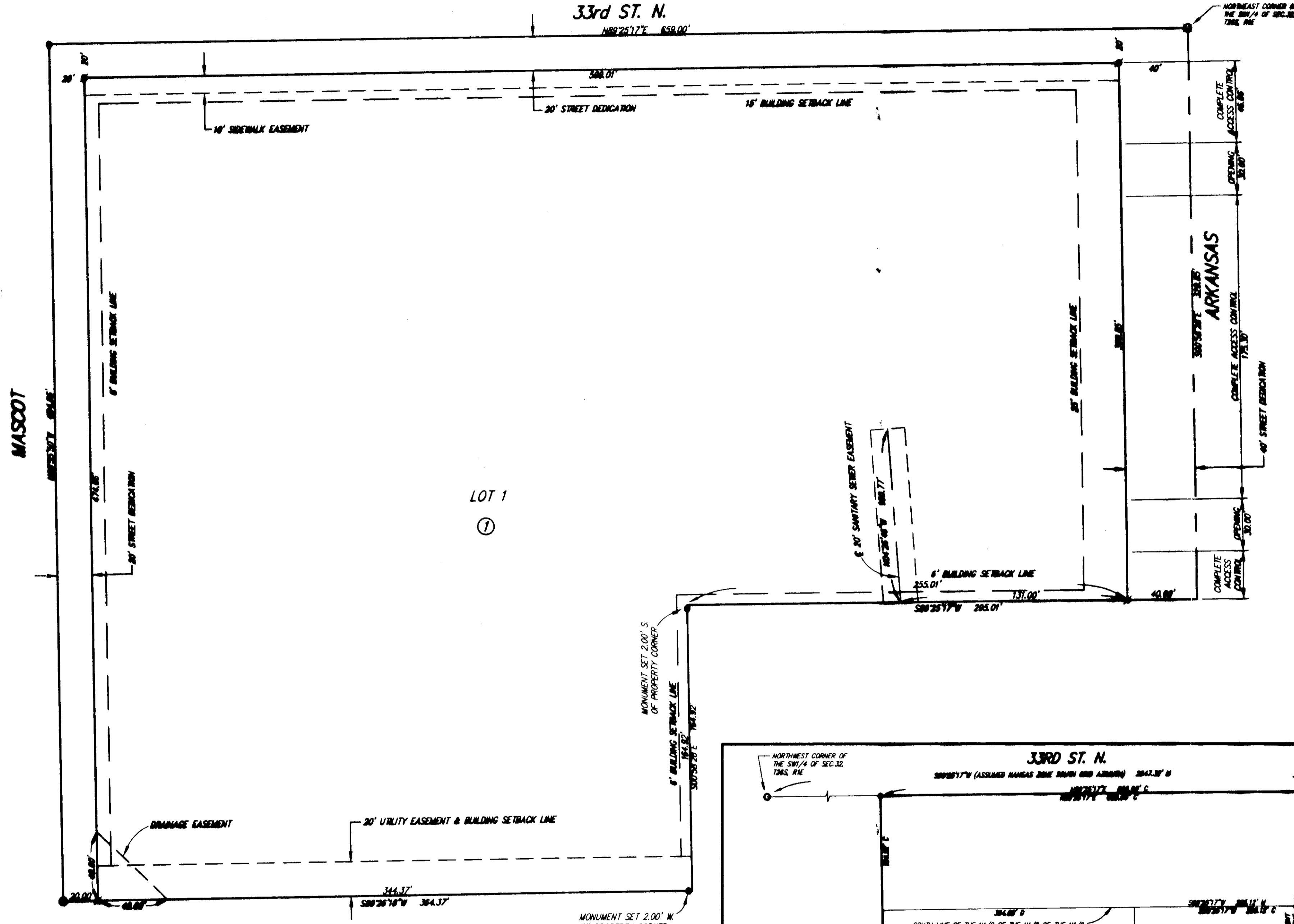
Sub 2010-00010

NORTH ELEMENTARY SCHOOL ADDITION

Wichita, Sedgwick County, Kansas

33rd ST. N.

N82°25'17"E 659.00'



LOT 1

①

MONUMENT SET 2.00' W. OF PROPERTY CORNER

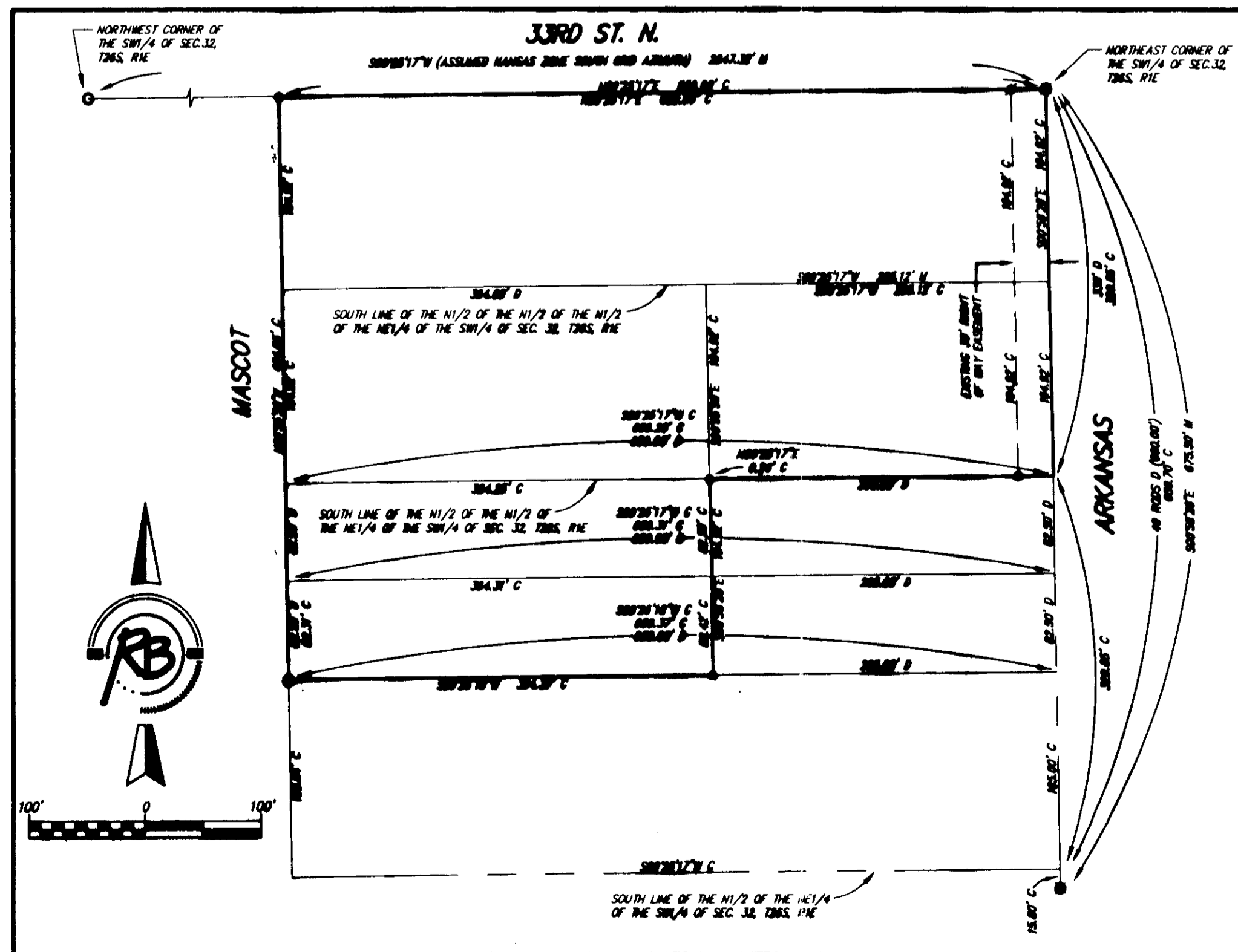


GRAPHIC SCALE



- M = Measured
C = Calculated
D = Described
- SURVEY MARKER LEGEND**
- 3/4" IRON PIPE (FOUND - ORIGIN UNKNOWN)
 - 3/4" IRON PIPE IN THIMBLE (FOUND - ORIGIN UNKNOWN)
 - 1/2" REBAR W/RUGGLES & BOHM CAP (SET)
 - 5/8" REBAR W/RUGGLES & BOHM CAP (SET)

BENCHMARK: CHISELED SQUARE ON THE TOP OF CURB AT THE SOUTH CURB RETURN AT THE SOUTHEAST CORNER OF 33RD ST. N. AND ARKANSAS AVE. ELEVATION = 1317.54 (NA 8000)



SOUTH LINE OF THE N1/2 OF THE N1/4 OF THE SW1/4 OF SEC. 32, T26S, R1E

State of Kansas) SS
Sedgwick County)

We, Ruggles & Bohm, P.A., Land Surveyors in aforesaid county and state, do hereby certify that, under the supervision of the undersigned, we have surveyed and platted "NORTH ELEMENTARY SCHOOL ADDITION", Wichita, Sedgwick County, Kansas, and that the accompanying plat is a true and correct exhibit of the property surveyed, described as follows:

The N1/2 of the N1/2 of the E1/2 of a tract of ground described as follows: Commencing at the Northeast Corner of the SW1/4 of Sec. 32, T26S, R1E of the 6th P.M., Sedgwick County, Kansas; thence south 40 rods; thence west to the West line of the E1/2 of said SW1/4; thence north to the North line of said SW1/4; thence east to the place of beginning.

The West 364 feet of the S1/2 of the N1/2 of the NE1/4 of the NE1/4 of the SW1/4 of Sec. 32, T26S, R1E of the 6th P.M., in Sedgwick County, Kansas.

Beginning 330 feet South of the Northeast Corner of the SW1/4 of Sec. 32, T26S, R1E of the 6th P.M., Sedgwick County, Kansas; thence west 659 feet; thence south 82.5 feet; thence east 659 feet; thence north 82.5 feet to the point of beginning, EXCEPT the East 295 feet thereof.

Beginning at a point on the East Line of the SW1/4 of Sec. 32, T26S, R1E of the 6th P.M., in Sedgwick County, Kansas, and 412.5 feet South of the Northeast Corner of the SW1/4 of said Sec. 32, thence west parallel with the North line of said SW1/4 a distance of 659 feet; thence south 82.5 feet; thence east 659 feet to a point on the East line of said SW1/4 of said Sec. 32; thence north 82.5 feet to the point of beginning, EXCEPT the East 295 feet thereof.

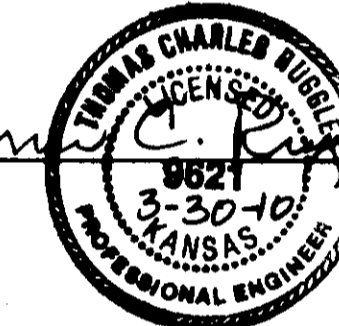
The north 58 feet of the S1/2 of the N1/2 of the NE1/4 of the NE1/4 of the SW1/4 of Sec. 32, T26S, R1E of the 6th P.M., Sedgwick County, Kansas, EXCEPT the west 364 feet thereof.

The south 107 feet of the S1/2 of the N1/2 of the NE1/4 of the NE1/4 of the SW1/4 of Sec. 32, T26S, R1E of the 6th P.M., Sedgwick County, Kansas, EXCEPT the west 364 feet thereof.

All public easements and dedications are hereby vacated by virtue of K.S.A. 12-512(b).

Ruggles & Bohm, P.A.

Thomas C. Ruggles
Thomas C. Ruggles
Land Surveyor



Know all men by these presents that we, the undersigned, have caused the land described in the surveyor's certificate to be platted into a Lot, a Block and a Street, to be known as "NORTH ELEMENTARY SCHOOL ADDITION", Wichita, Sedgwick County, Kansas. The utility easements are hereby granted for the construction and maintenance of all public utilities. The sidewalk easement is hereby granted for the use of the public. Access Controls as indicated are hereby granted to the appropriate governing body. The street is hereby dedicated to and for the use of the public. A drainage plan has been developed for this plat and all drainage easements shall remain at established grades, or as modified with the approval of the City Engineer, and unobstructed to allow for the conveyance of storm water.

Unified School District 259

Barbara Fuller
Barbara Fuller, President

State of Kansas) SS
Sedgwick County)

The foregoing instrument acknowledged before me, this 5th day of April, 2010, by Barbara Fuller, President, on behalf of the Board of Unified School District 259.

My appointment expires 6/30/11

This plat of "NORTH ELEMENTARY SCHOOL ADDITION", Wichita, Sedgwick County, Kansas, has been submitted to and approved by the Wichita-Sedgwick County Metropolitan Area Planning Commission, Wichita, Kansas.

Dated this _____ day of _____, 2010.

Wichita-Sedgwick County Metropolitan Area Planning Commission

Chair

Secretary

This plat approved and all dedications shown hereon accepted by the City Council of the City of Wichita, Kansas, this _____ day of _____, 2010.

At the Direction of the City Council

Mayor

City Clerk

City Clerk

Reviewed in accordance with K.S.A. 58-2005 on this _____ day of _____, 2010.

Deputy County Surveyor
Sedgwick County Kansas
Tricia L. Robello, LS #1246

Entered on transfer record this _____ day of _____, 2010.

County Clerk
Kelly B. Arnold

State of Kansas) SS
Sedgwick County)

This is to certify that this plat has been filed for record in the office of the Register of Deeds, this _____ day of _____, 2010, at _____ o'clock _____ M., and is duly recorded.

Register of Deeds
Bill Meek

Deputy
Tonya Buckingham



Ruggles & Bohm, P.A.
Engineering, Surveying, Land Planning

924 North Main (316) 264-8008
Wichita, Kansas 67203 (316) 264-4621 fax
www.rbkansas.com E-mail: info@rbkansas.com

DWG FILE: SURVEY BASE
PROJECT NO. 3547P
MARCH 30, 2010