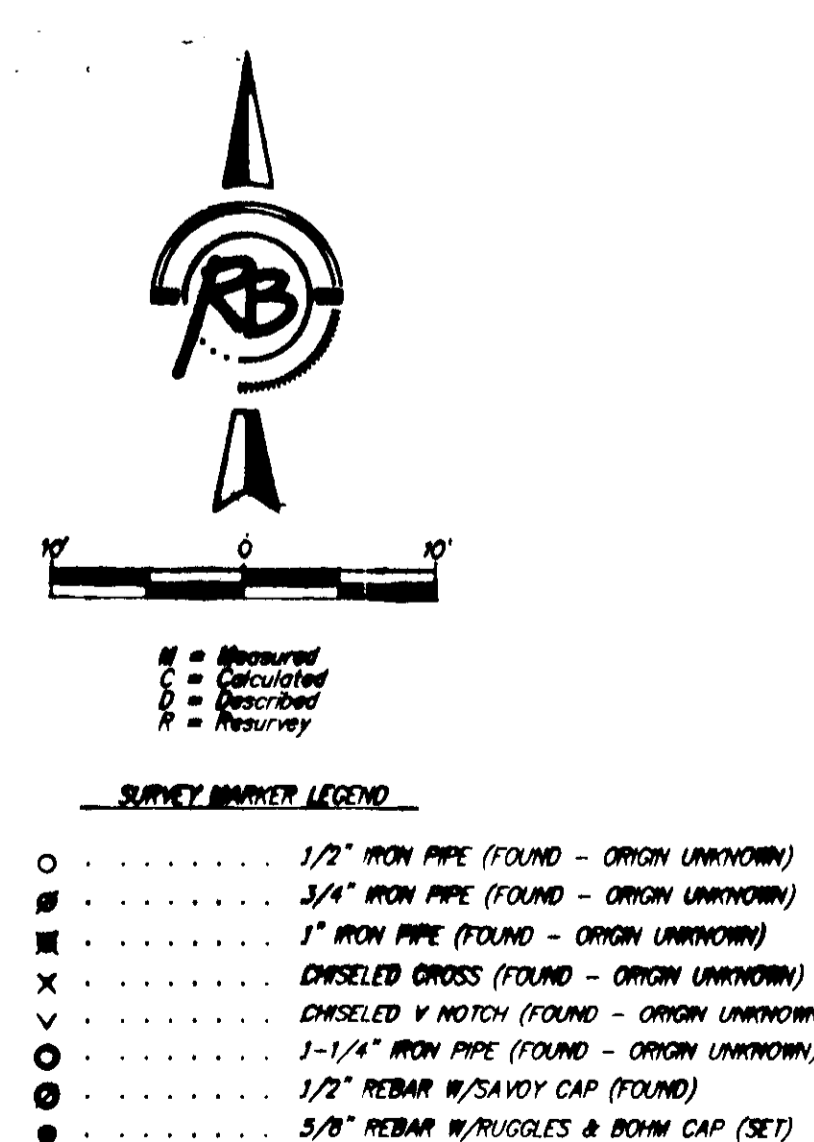
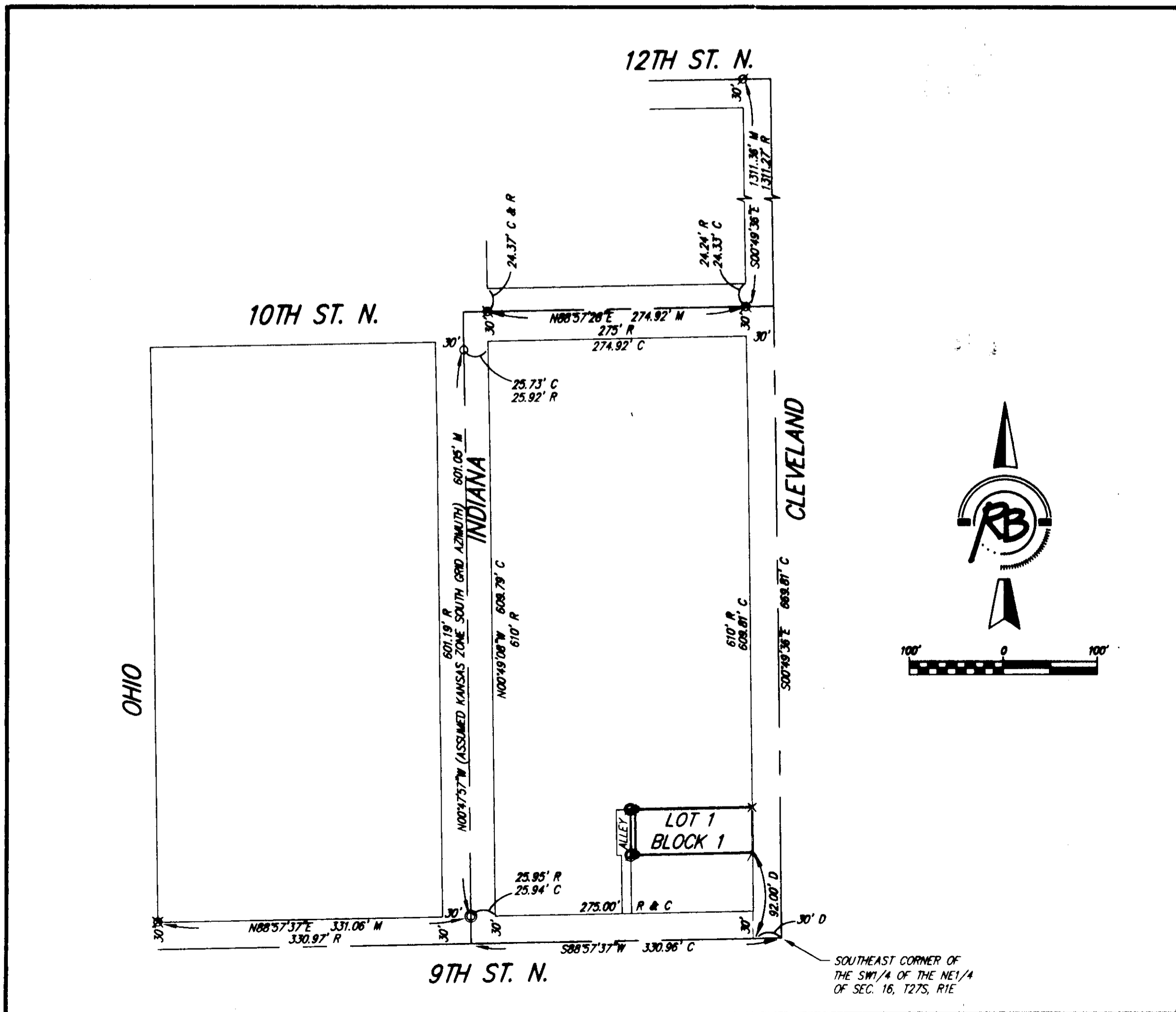
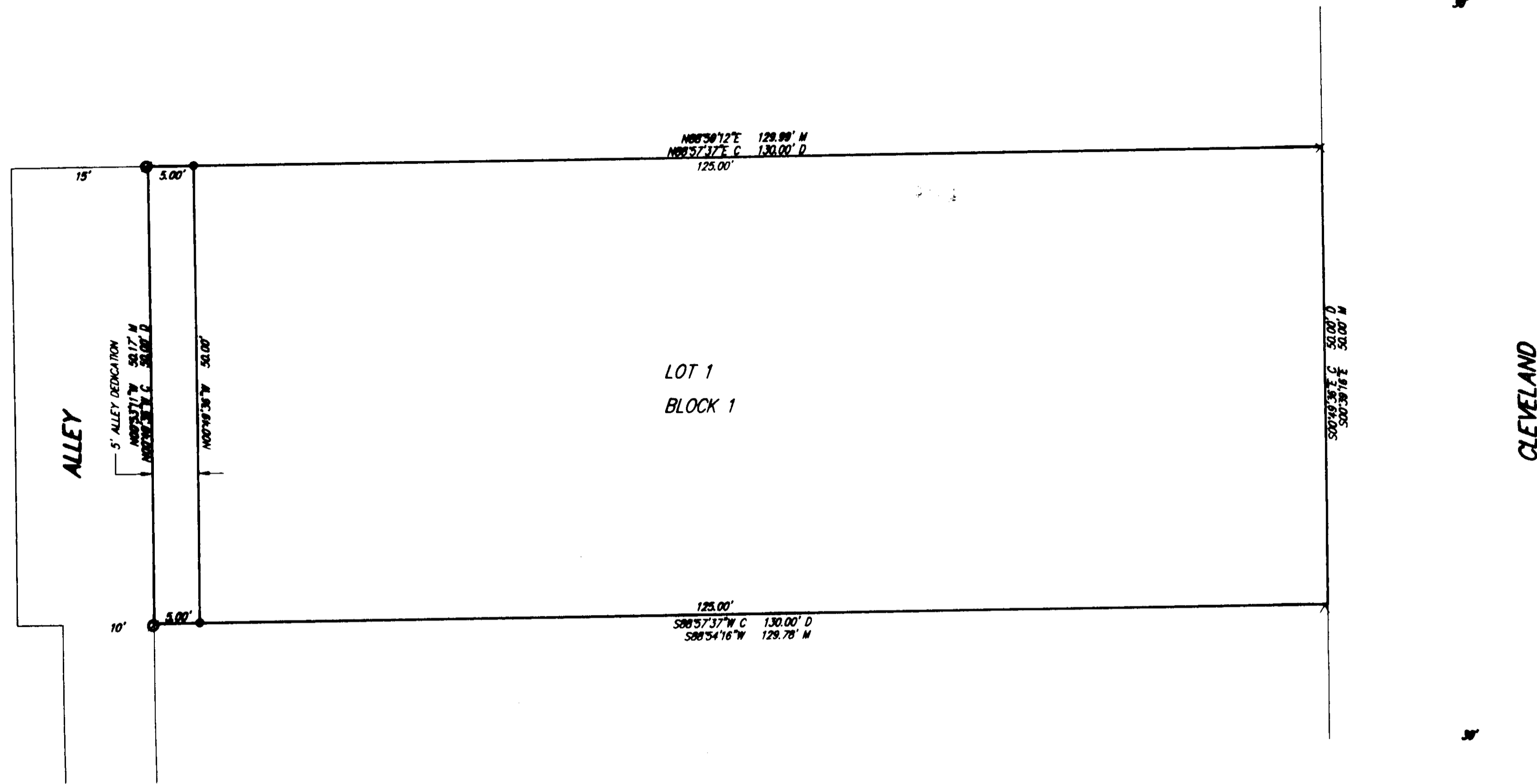


HISTORICAL DUNBAR THEATER

an Addition to Wichita, Sedgwick County, Kansas



- SURVEY MARKER LEGEND**
- 1/2" IRON PIPE (FOUND - ORIGIN UNKNOWN)
 - ⊠ 3/4" IRON PIPE (FOUND - ORIGIN UNKNOWN)
 - 1" IRON PIPE (FOUND - ORIGIN UNKNOWN)
 - ⊕ CHISELED CROSS (FOUND - ORIGIN UNKNOWN)
 - ∇ CHISELED V NOTCH (FOUND - ORIGIN UNKNOWN)
 - ⊙ 1-1/4" IRON PIPE (FOUND - ORIGIN UNKNOWN)
 - ⊖ 1/2" REBAR W/SAVOY CAP (FOUND)
 - 5/8" REBAR W/RUGGLES & BOHM CAP (SET)

State of Kansas)
 Sedgwick County) SS

We, Ruggles & Bohm, P.A., Land Surveyors in aforesaid county and state, do hereby certify that, under the supervision of the undersigned, we have surveyed and platted "HISTORICAL DUNBAR THEATER", an Addition to Wichita, Sedgwick County, Kansas, and that the accompanying plat is a true and correct exhibit of the property surveyed, described as follows:

Beginning 92 feet North and 30 feet West of the Southeast corner of the Southwest Quarter of the Northeast Quarter of Section 16, Township 27 South, Range 1 East of the 6th P.M., Sedgwick County, Kansas; thence West, 130 feet; thence North, 50 feet; thence East, 130 feet; thence South, 50 feet to the place of beginning.

All public easements and dedications are hereby vacated by virtue of K.S.A. 12-512(b).

Ruggles & Bohm, P.A.

William K. Clevenger
 Land Surveyor
 William K. Clevenger

Know all men by these presents that we, the undersigned, have caused the land described in the surveyor's certificate to be platted into a Lot, a Block and an Alley to be known as "HISTORICAL DUNBAR THEATER", an Addition to Wichita, Sedgwick County, Kansas. The alley is hereby dedicated to and for the use of the public. A drainage plan has been developed for this plat and all drainage easements shall remain at established grades, or as modified with the approval of the City Engineer, and unobstructed to allow for the conveyance of storm water.

Power Community
 Development Corporation

James W. Arbertha
 Executive Director
 James W. Arbertha

State of Kansas)
 Sedgwick County) SS

The foregoing instrument acknowledged before me, this 15th day of OCTOBER, 2010, by James W. Arbertha, Executive Director, on behalf of Power Community Development Corporation.

Vesta Florence
 Notary Public

My appointment expires 7/5/2014

Sedgwick County, Kansas

Vesta Florence
 Notary Public, State of Kansas
 My Appt Expires 7/5/2014

This plat of "HISTORICAL DUNBAR THEATER", an Addition to Wichita, Sedgwick County, Kansas, has been submitted to and approved by the Wichita-Sedgwick County Metropolitan Area Planning Commission, Wichita, Kansas.

Dated this 23rd day of September, 2010.

Wichita-Sedgwick County Metropolitan Area Planning Commission

Debra Miller Stevens
 Chair
John L. Schlegel
 Secretary
 John L. Schlegel

This plat approved and all dedications shown hereon accepted by the City Council of the City of Wichita, Kansas, this ___ day of _____, 2010.

At the Direction of the City Council

Carl Brewer
 Mayor
Karen Sublett
 City Clerk

Reviewed in accordance with K.S.A. 58-2005 on this 22nd day of October, 2010.

L. Robello
 Deputy County Surveyor
 Sedgwick County Kansas
 L. Robello, LS #1246

Entered on transfer record this ___ day of _____, 2010.

Kelly B. Arnold
 County Clerk

State of Kansas)
 Sedgwick County) SS

This is to certify that this plat has been filed for record in the office of the Register of Deeds, this ___ day of _____, 2010, at ___ o'clock ___ M, and is duly recorded.

Bill Meek
 Register of Deeds

Tonya Buckingham
 Deputy



Ruggles & Bohm, P.A.
 Engineering, Surveying, Land Planning

DWG FILE: SURVEY BASE
 PROJECT NO. 3687P
 SEPTEMBER 30, 2010

924 North Main (316) 264-8008
 Wichita, Kansas 67203 (316) 264-4821 fax
 www.rbkansas.com E-mail: info@rbkansas.com