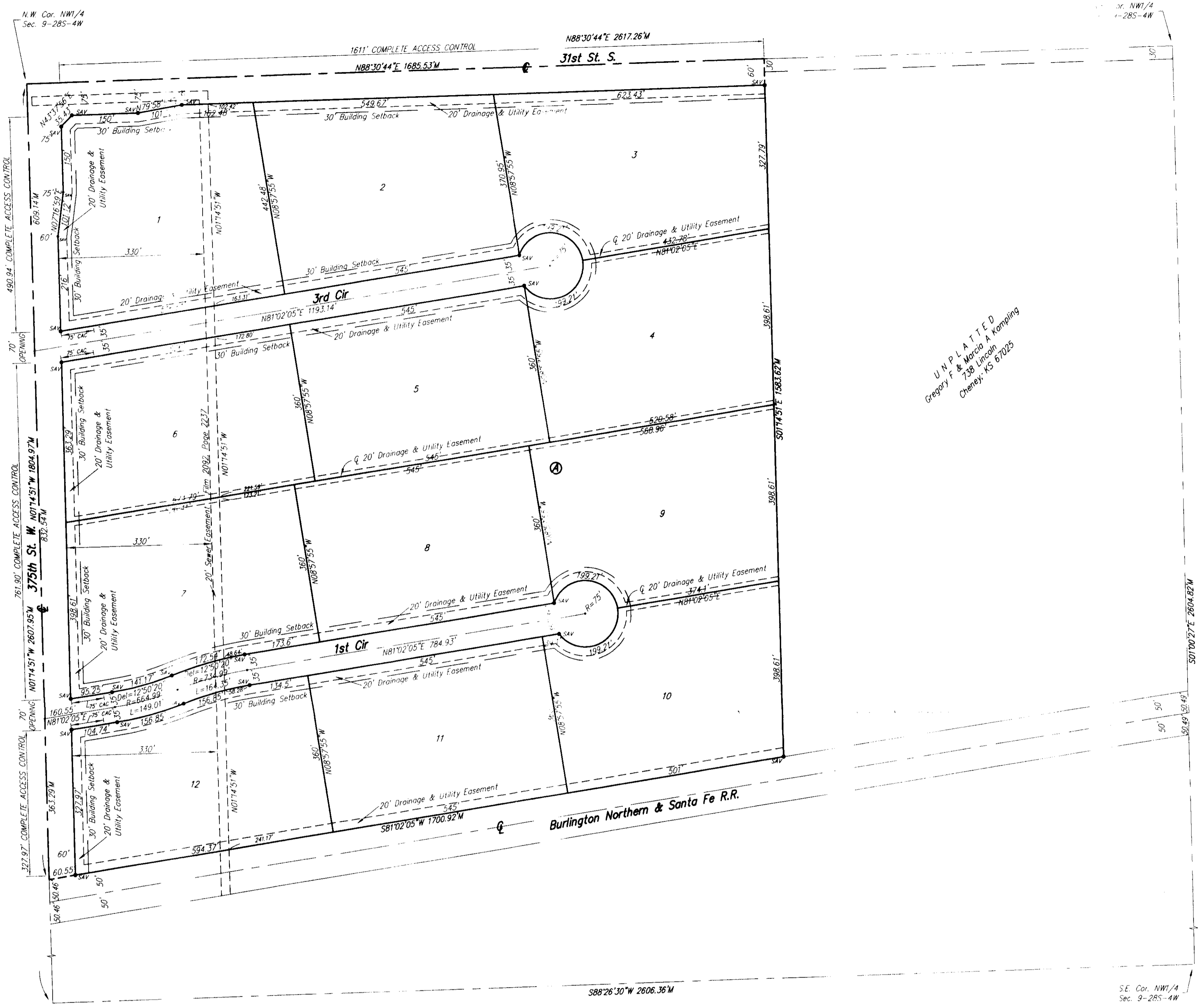


# SANTA FE CROSSING

## AN ADDITION TO SEDGWICK COUNTY, KANSAS



UNPLATTED  
 Gregory F. & Marcia A. Kampling  
 Cheney, KS 67025

State of Kansas) SS  
 Sedgwick County)  
 We, Savoy Company, P.A., Surveyors in aforesaid county and state do hereby certify that, under the supervision of the undersigned, we have surveyed and platted "SANTA FE CROSSING", an Addition to Sedgwick County, Kansas and that the accompanying plat is a true and correct exhibit of the property surveyed, described as:  
 That part of the NW1/4 of Sec. 9, Twp. 28-S, R-4-W of the 6th P.M., Sedgwick County, Kansas, described as beginning at the N.W. Corner thereof; thence N88°30'44"E, along the north line of said NW1/4, 1685.53 feet; thence S01°14'51"E, parallel with the west line of said NW1/4, 1583.62 feet to the north right-of-way of the Burlington Northern & Santa Fe Railway; thence S81°02'05"W, along said Railway right-of-way, 1700.92 feet to the west line of said NW1/4; thence N01°14'51"W, along the west line of said NW1/4, 1804.97 feet to the point of beginning.

All Public easements and dedications being vacated by virtue of K.S.A. 12-512(b).  
 Savoy Company, P.A.  
 Date 26 January 2011 Mark A. Savoy Surveyor  
Mark A. Savoy RLS #788

Know all men by these presents that we, the undersigned, have caused the land described in the surveyors certificate to be platted into Lots, a Block and Streets to be known as "SANTA FE CROSSING", an Addition to Sedgwick County, Kansas. The Streets are hereby dedicated to and for the use of the public. The Drainage and Utility easements are hereby granted for the construction and maintenance of all public utilities and for drainage purposes. A drainage plan has been developed for this plat and all drainage easements, rights-of-way, or reserves shall remain at established grades, or as modified with the approval of the appropriate governing Engineer, and unobstructed to allow for the conveyance of stormwater. Access Control is hereby granted to the appropriate governing body and is as shown on the face of the plat.

Gregory F. Kampling  
Marcia A. Kampling

This plat of "SANTA FE CROSSING", an Addition to Sedgwick County, Kansas, has been submitted to and approved by the Wichita-Sedgwick County Metropolitan Area Planning Commission, Wichita, Kansas.

Dated this \_\_\_\_\_ day of \_\_\_\_\_, 20\_\_\_\_.  
 Wichita-Sedgwick County Metropolitan Area Planning Commission  
 \_\_\_\_\_ Chairman  
Debra Miller Stevens  
 \_\_\_\_\_ Secretary  
John L. Schlegel

This plat approved and all dedications shown hereon, are hereby accepted by the Board of County Commissioners, Sedgwick County, Kansas, this \_\_\_\_\_ day of \_\_\_\_\_, 20\_\_\_\_.

\_\_\_\_\_ Chairman  
Karl Peterjohn  
 \_\_\_\_\_ County Clerk  
Kelly B. Arnold

Reviewed in accordance with K.S.A. 58-2005 on this \_\_\_\_\_ day of \_\_\_\_\_, 20\_\_\_\_.  
 \_\_\_\_\_ Deputy County Surveyor  
Tricia L. Robello, LS #1246

Entered on transfer record this \_\_\_\_\_ day of \_\_\_\_\_, 20\_\_\_\_.  
 \_\_\_\_\_ County Clerk  
Kelly B. Arnold

State of Kansas) SS  
 Sedgwick County)  
 The foregoing instrument acknowledged before me, this \_\_\_\_\_ day of \_\_\_\_\_, 20\_\_\_\_, by Gregory F. Kampling and Marcia A. Kampling, husband and wife.  
 \_\_\_\_\_ Notary Public  
 My App't. Exp. \_\_\_\_\_  
NANCY A. BURNETT  
 Notary Public, State of Kansas  
 My Appt. Expires \_\_\_\_\_

State of Kansas) SS  
 Sedgwick County)  
 This is to certify that this plat has been filed for record in the office of the Register of Deeds, this \_\_\_\_\_ day of \_\_\_\_\_, 20\_\_\_\_, at o'clock \_\_\_\_M: and is duly recorded.  
 \_\_\_\_\_ Register of Deeds  
Bill Meek  
 \_\_\_\_\_ Deputy  
Tonya Buckingham

We the, the undersigned, holders of a mortgage on the above described property, do hereby consent to the plat of "SANTA FE CROSSING", an Addition to Sedgwick County, Kansas.  
 The Citizens State Bank of Cheney  
Roger F. Brown

State of Kansas) SS  
 Sedgwick County)  
 The foregoing instrument acknowledged before me, this \_\_\_\_\_ day of \_\_\_\_\_, 20\_\_\_\_, by \_\_\_\_\_ of The Citizens State Bank of Cheney, on behalf of the Bank.  
 \_\_\_\_\_ Notary Public  
 My App't. Exp. \_\_\_\_\_  
NANCY A. BURNETT  
 Notary Public, State of Kansas  
 My Appt. Expires \_\_\_\_\_

