

FINAL TRACING REC'D 5-4-11  
 SUB 2010-05  
 FILE COPY

# ASR M-34 WELL SITE ADDITION

AN ADDITION TO SEDGWICK COUNTY, KANSAS



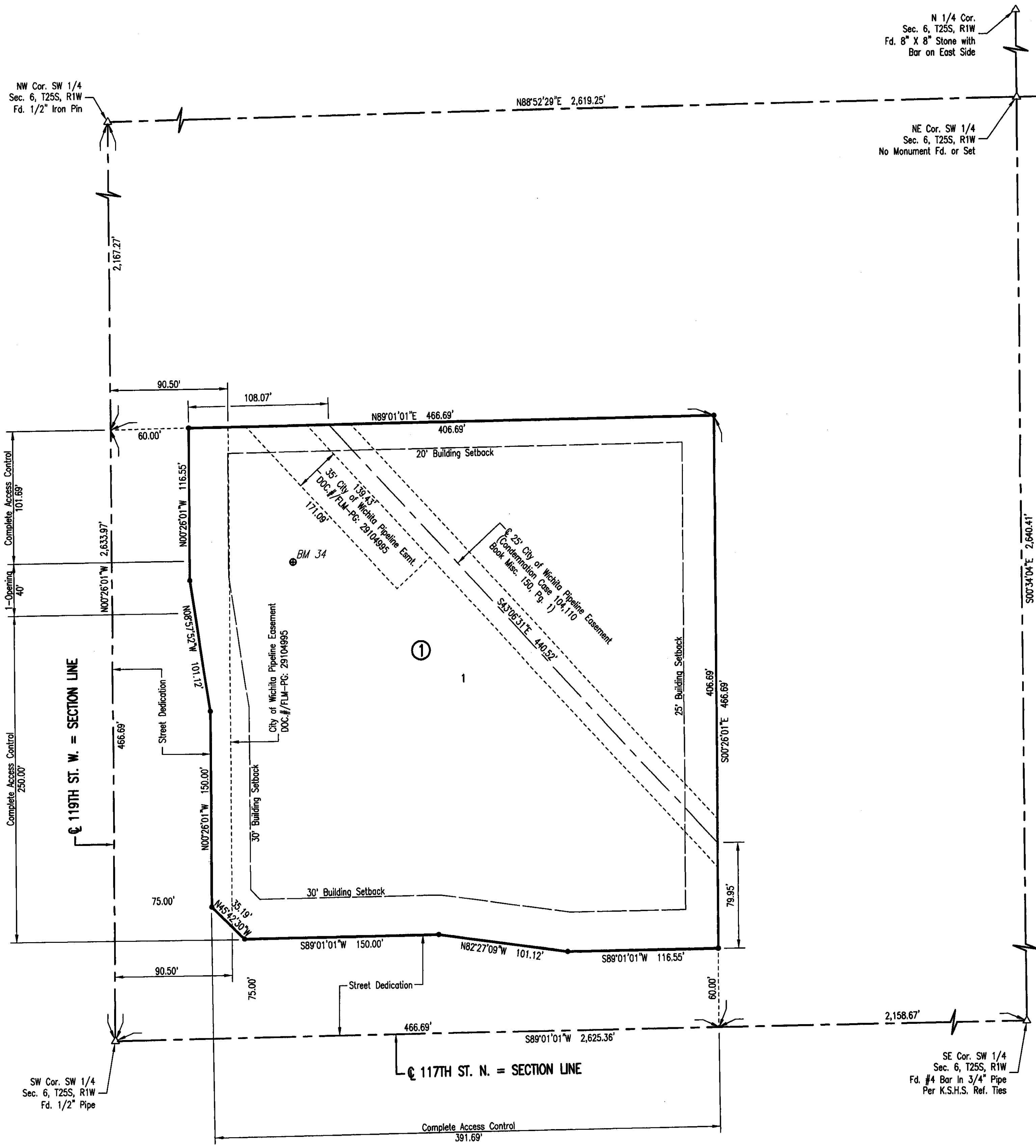
SCALE: 1" = 50'

• = 1/2" REBAR W/PEC CAP UNLESS OTHERWISE NOTED  
 △ = SECTION CORNER

**BENCHMARKS**

BM 34  
 A CHISELED SQUARE ON THE SOUTHWEST CORNER OF A CONCRETE WELL PUMP BASE, LOCATED AT THE CITY OF WICHITA WELL HOUSE #34 AT THE NORTHEAST CORNER OF THE INTERSECTION OF 117TH ST. NORTH, AND 119TH ST. WEST, IN SEDGWICK COUNTY.

ELEV. 1383.40 NAVD88



STATE OF KANSAS )  
 ) SS  
 COUNTY OF SEDGWICK )

WE, PROFESSIONAL ENGINEERING CONSULTANTS, P.A., ENGINEERS AND SURVEYORS IN AFORESAID STATE AND COUNTY, DO HEREBY CERTIFY THAT ON THIS 3RD DAY OF May, 2011, WE HAVE SURVEYED AND PLATTED ASR M-34 WELL SITE ADDITION, AN ADDITION TO SEDGWICK COUNTY, KANSAS, INTO A LOT, AND A BLOCK. THE SAME BEING DESCRIBED AS FOLLOWS:

THE SOUTH 466.69 FEET OF THE WEST 466.69 FEET OF THE SOUTHWEST QUARTER OF SECTION 6, TOWNSHIP 25 SOUTH, RANGE 1 WEST, OF THE 6TH P.M., SEDGWICK COUNTY, KANSAS.

ALL PUBLIC EASEMENTS LYING WITHIN THE ABOVE DESCRIBED TRACT OF LAND ARE HEREBY VACATED AND REPLATTED BY VIRTUE OF KSA 12-512(b) AMENDED.

*James R. Beckett*  
 JAMES R. BECKETT, R.L.S. NO. 832  
 PROFESSIONAL ENGINEERING CONSULTANTS, P.A.

A DRAINAGE PLAN HAS BEEN APPROVED FOR THIS PLAT. ALL DRAINAGE EASEMENTS, RESERVES, AND RIGHTS-OF-WAY SHALL REMAIN AT ESTABLISHED GRADES AND UNOBSTRUCTED TO ALLOW FOR THE CONVEYANCE OF STORMWATER, UNLESS MODIFIED WITH THE APPROVAL OF THE COUNTY ENGINEER.

THE STREETS ARE HEREBY DEDICATED TO AND FOR THE USE OF THE PUBLIC.

ACCESS CONTROLS AS INDICATED ARE HEREBY GRANTED TO THE APPROPRIATE GOVERNING BODY AND SHALL BE IN ACCORDANCE WITH THE SEDGWICK COUNTY ACCESS MANAGEMENT STANDARDS.

KNOW ALL MEN BY THESE PRESENTS THAT WE, THE UNDERSIGNED PROPERTY OWNERS OF THE LAND AS ABOVE SET FORTH IN THE SURVEYOR'S CERTIFICATE, HAVE CAUSED THE LAND TO BE SURVEYED AND PLATTED INTO A LOT, AND A BLOCK. THE SAME TO BE KNOWN AS ASR M-34 WELL SITE ADDITION, AN ADDITION TO SEDGWICK COUNTY, KANSAS.

OWNER(S):  
 CITY OF WICHITA, KANSAS MUNICIPAL CORPORATION

CARL BREWER, MAYOR  
 STATE OF KANSAS )  
 ) SS  
 COUNTY OF SEDGWICK )

THIS INSTRUMENT WAS ACKNOWLEDGED BEFORE ME ON \_\_\_\_\_, 2011, BY CARL BREWER, MAYOR, CITY OF WICHITA, KANSAS, MUNICIPAL CORPORATION.

MY APPOINTMENT EXPIRES:

THIS PLAT OF ASR M-34 WELL SITE ADDITION HAS BEEN SUBMITTED TO AND APPROVED BY THE WICHITA-SEDGWICK COUNTY METROPOLITAN AREA PLANNING COMMISSION, WICHITA, KANSAS.

DATED THIS \_\_\_\_ DAY OF \_\_\_\_\_, 2011.

WICHITA-SEDGWICK COUNTY METROPOLITAN AREA PLANNING COMMISSION

\_\_\_\_\_, CHAIR  
 DEBRA MILLER STEVENS

\_\_\_\_\_, SECRETARY  
 JOHN L. SCHLEGEL

REVIEWED IN ACCORDANCE WITH K.S.A. 58-2005 ON THIS \_\_\_\_ DAY OF \_\_\_\_\_, 2011.

TRICIA L. ROBELLO, LS #1246  
 DEPUTY COUNTY SURVEYOR  
 SEDGWICK COUNTY KANSAS

THIS PLAT IS APPROVED AND ALL DEDICATIONS SHOWN HEREON, IF ANY, ARE ACCEPTED BY THE BOARD OF COUNTY COMMISSIONERS OF SEDGWICK COUNTY, KANSAS, THIS \_\_\_\_ DAY OF \_\_\_\_\_, 2011.

\_\_\_\_\_, CHAIRMAN  
 DAVID M. UNRUH

\_\_\_\_\_, COUNTY CLERK  
 KELLY B. ARNOLD

ENTERED ON TRANSFER RECORD THIS \_\_\_\_ DAY OF \_\_\_\_\_, 2011.

\_\_\_\_\_, COUNTY CLERK  
 KELLY B. ARNOLD

THIS IS TO CERTIFY THAT THIS INSTRUMENT WAS FILED FOR RECORD IN THE REGISTER OF DEEDS OFFICE AT \_\_\_\_ A.M. - P.M., ON THE \_\_\_\_ DAY OF \_\_\_\_\_, 2011.

\_\_\_\_\_, REGISTER OF DEEDS  
 BILL MEEK

\_\_\_\_\_, DEPUTY  
 TONYA BUCKINGHAM

Plat Scale 1/50' 05-03-2011 2:26:35 PM by JOSH I. SULLARD  
 C:\2007\07885\005\ASR Plats\07885-005 Final M-34