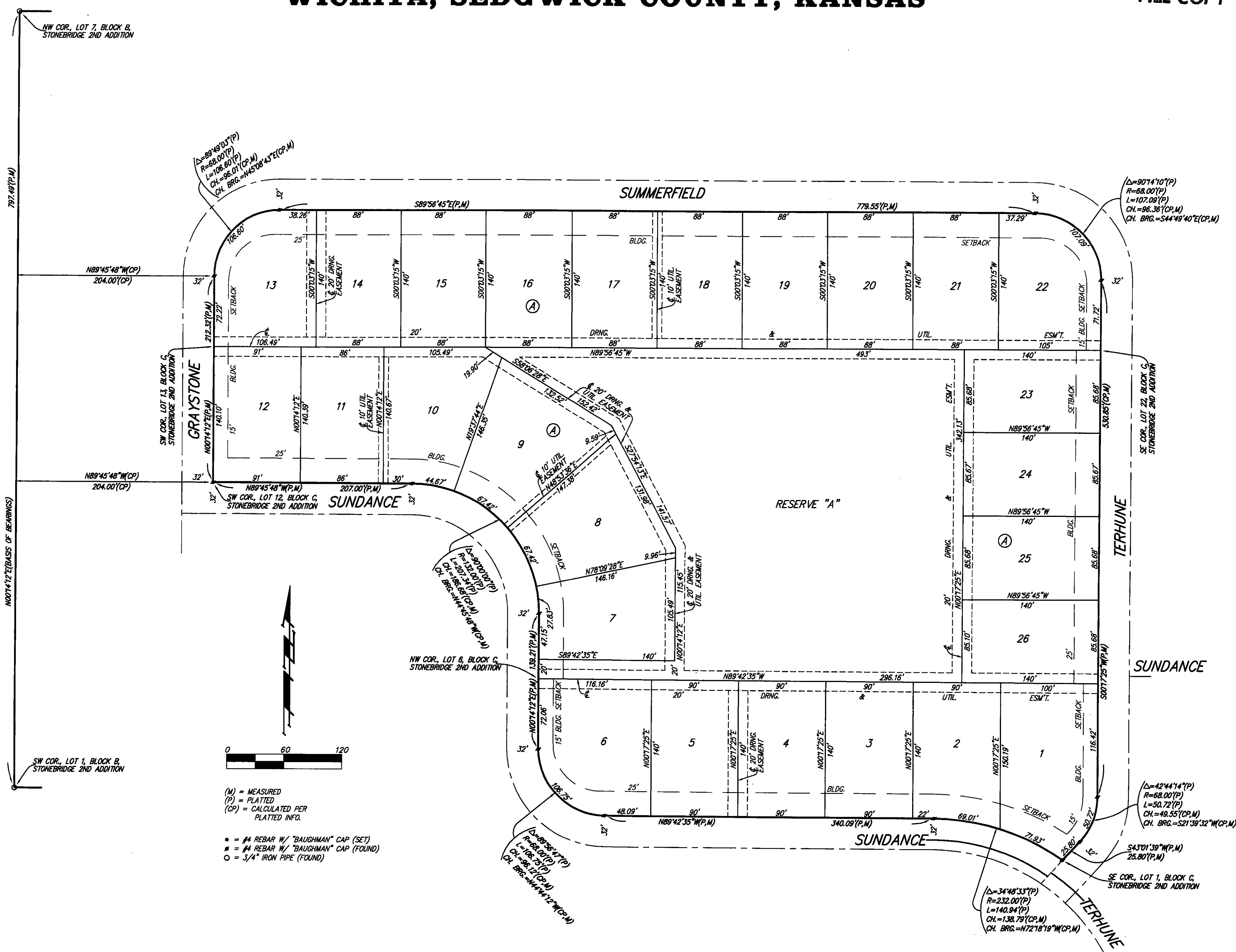


STONEBRIDGE 3RD ADDITION

WICHITA, SEDGWICK COUNTY, KANSAS

FINAL TRACING REC'D 4-15-11

FILE COPY



(M) = MEASURED
(P) = PLATTED
(CP) = CALCULATED PER PLATTED INFO.

• = #4 REBAR W/ "BAUGHMAN" CAP (SET)
• = #4 REBAR W/ "BAUGHMAN" CAP (FOUND)
○ = 3/4" IRON PIPE (FOUND)

State of Kansas) SS We, Baughman Company, P.A., Surveyors in Sedgwick County, Kansas do hereby certify that we have surveyed and platted "STONEBRIDGE 3RD ADDITION", Wichita, Sedgwick County, Kansas and that the accompanying plat is a true and correct exhibit of the property surveyed, described as and being a replat of all of Lots 1, 2, 3, 4, 5, 6, 7, 8, 9, 10, 11, 12, 13, 14, 15, 16, 17, 18, 19, 20, 21, 22, 23, 24, 25, 26, 27, 28, 29, 30, Block C, Stonebridge 2nd Addition, Sedgwick County, Kansas, together with all of Terhune Ct as dedicated in said Stonebridge 2nd Addition.

Existing public easements, setbacks, and dedications being vacated by virtue of K.S.A. 12-512(b).

All being situated in the Southeast Quarter of Section 12, Township 27 South, Range 2 East of the Sixth Principal Meridian, Sedgwick County, Kansas

Baughman Company, P.A.

This plat of "STONEBRIDGE 3RD ADDITION", Wichita, Sedgwick County, Kansas has been submitted to and approved by the Wichita-Sedgwick County Metropolitan Area Planning Commission, Wichita, Kansas.

Dated this _____ day of _____, 2011.
Wichita-Sedgwick County Metropolitan Area Planning Commission

Debra Miller Stevens, Chair

John L. Schlegel, Secretary

This plat approved and all dedications shown hereon accepted by the City Council of the City of Wichita, Kansas, this _____ day of _____, 2011.

Carl Brewer, Mayor

Karen Sublett, City Clerk

LOT	BLOCK	ELEVATION	
		NGVD29	NAVD88
2-5	A	1345.0	1345.48
7-10	A	1345.0	1345.48
15-21	A	1345.0	1345.48
23-26	A	1345.0	1345.48

BENCHMARK:
□ CUT, TOP OF CURB, SOUTH SIDE OF SUNDANCE AS DEDICATED IN SAVANNAH AT CASTLE ROCK RANCH 7TH ADDITION, 25± WEST OF THE WEST LINE OF THE SE 1/4 OF SEC. 12, TWP. 27-S, R-2-E. ELEV. = 1347.53 NAVD88
ELEV. = 1347.81 NAVD88

80# NAIL IN HIGH LINE POLE, 30' SOUTH OF S1/4 COR., SEC. 12, TWP. 27-S, R-2-E. ELEV. = 1348.58 NGVD29 (PER COUNTY RECORD)
ELEV. = 1348.06 NAVD88 (CALCULATED PER COUNTY RECORD)

NOTE:
A MASTER GRADING PLAN FOR DRAINAGE HAS BEEN DEVELOPED FOR THIS SUBDIVISION AND IS ON FILE WITH THE CITY OF WICHITA, KANSAS. ALL DRAINAGE EASEMENTS, RIGHTS-OF-WAY, OR RESERVES SHALL REMAIN AT ESTABLISHED GRADES OR AS NOTED WITH THE APPROVAL OF THE CITY ENGINEER OF THE CITY OF WICHITA, KANSAS. NO OBSTRUCTIONS WHICH IMPEDE THE FLOW OF THIS DRAINAGE SYSTEM SHALL BE ALLOWED.

Michael G. Conrey, Surveyor
18-071
2011

Know all men by these presents that we, the undersigned, have caused the land in the surveyors certificate to be platted into Lots, a Block, and a Reserve, to be known as "STONEBRIDGE 3RD ADDITION", Wichita, Sedgwick County, Kansas. The utility easements are hereby granted as indicated for the construction and maintenance of all public utilities. The drainage easements are hereby granted as indicated for drainage purposes. The drainage and utility easements are hereby granted as indicated for drainage purposes and for the construction and maintenance of all public utilities. Reserve "A" is hereby reserved for lakes, landscaping, open space, berms, sidewalks, drainage purposes, access purposes, and utilities as confined to easements. Reserve "A" shall be owned and maintained by the homeowners association for the addition. The Minimum Building Pad Elevations for the lowest opening to the structures shall be as indicated on the face of the plat.

FLKS Land Development, LLC
a Kansas limited liability company

Steven R. Barrett, Member

Reviewed in accordance with K.S.A. 58-2005 on this _____ day of _____, 2011.

Tricia L. Robella, L.S. #1246
Deputy County Surveyor
Sedgwick County, Kansas

Entered on transfer record this _____ day of _____, 2011.

Kelly B. Arnold, County Clerk

We, the undersigned holders of mortgages on the above described property, do hereby consent to this plat of "STONEBRIDGE 3RD ADDITION", Wichita, Sedgwick County, Kansas.

Commerce Bank, N.A.
Collin Stieben, SVP

State of Kansas) SS The foregoing instrument acknowledged before me, this 14th day of April, 2011, by Steven R. Barrett, Member of FLKS Land Development, LLC, a Kansas limited liability company, on behalf of the limited liability company.

JUDITH M. TERHUNE
Notary Public - State of Kansas
My Appl. Expires 11-7-13

Judith M. Terhune, Notary Public

My App't. Exp. 11-7-13

State of Kansas) SS This is to certify that this plat has been filed for record in the office of the Register of Deeds, this _____ day of _____, 2011 at _____ o'clock _____ M.; and is duly recorded.

Bill Meek, Register of Deeds

Tonya Buckingham, Deputy

State of Kansas) SS The foregoing instrument acknowledged before me, this 14 day of April, 2011, by Collin Stieben, S.V.P. of Commerce Bank, N.A., on behalf of the bank.

JOHANNA V. COLLAZO
Notary Public - State of Kansas
My Appl. Expires 3-24-15

Johanna V. Collazo, Notary Public

My App't. Exp. 3-24-15

Baughman Company, P.A.
315 Ella St. Wichita, KS 67211 P 31662771 F 316620149
Baughman ENGINEERING | SURVEYING | PLANNING | LANDSCAPE ARCHITECTURE