

SUB 2010-59

FILE COPY

FINAL TRACING REC'D 2-15-11

FINAL PLAT

# MOORINGS ADDITION REPLAT RESERVE B

AN ADDITION TO WICHITA, SEDGWICK COUNTY, KANSAS

## PLANNING COMMISSION CERTIFICATE

This plat of "MOORINGS ADDITION REPLAT RESERVE B" has been submitted to and approved by the Wichita-Sedgwick County Metropolitan Area Planning Commission, Wichita, Kansas.

Dated this \_\_\_ day of \_\_\_\_\_, 2011

WICHITA-SEDGWICK COUNTY METROPOLITAN AREA PLANNING COMMISSION

\_\_\_\_\_, Chair  
Debra Miller Stevens, Chair

Attest: \_\_\_\_\_, Secretary  
John L. Schlegel, Secretary

## GOVERNING BODY CERTIFICATE

The dedications shown on this plat are hereby accepted and this plat is hereby approved by the governing body of the City of Wichita, Kansas.

Dated this \_\_\_ day of \_\_\_\_\_, 2011

At the direction of the City Council.

\_\_\_\_\_, Mayor  
Carl Brewer, Mayor

Attest: \_\_\_\_\_, City Clerk  
Karen Sublett, City Clerk

## TRANSFER RECORD

STATE OF KANSAS, SEDGWICK COUNTY) ss:

Entered on transfer record this \_\_\_ day of \_\_\_\_\_, 2011

\_\_\_\_\_, County Clerk  
Kelly B. Arnold, County Clerk

## REGISTER OF DEEDS CERTIFICATE

STATE OF KANSAS, SEDGWICK COUNTY) ss:

This is to certify that this instrument was filed for record in the Register of Deeds office this \_\_\_ day of \_\_\_\_\_, 2011, at \_\_\_\_\_ o'clock \_M; and is duly recorded.

\_\_\_\_\_, Register of Deeds  
Bill Meek, Register of Deeds

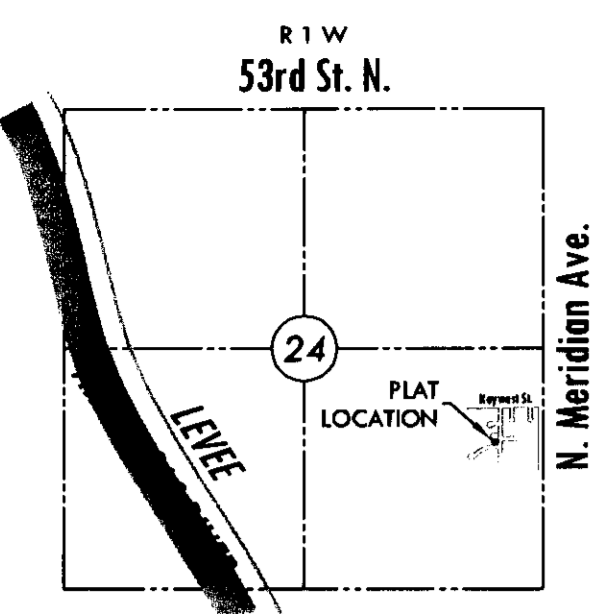
Attest: \_\_\_\_\_, Deputy  
Tonya E. Buckingham, Deputy

## COUNTY SURVEYOR

STATE OF KANSAS, SEDGWICK COUNTY) ss:

Reviewed in accordance with K.S.A. 58-2005 on this \_\_\_ day of \_\_\_\_\_, 2011.

\_\_\_\_\_, Deputy County Surveyor  
Tricia L. Robello, LS #1246  
Deputy County Surveyor  
Sedgwick County, Kansas



### VICINITY MAP

### CERTIFICATE OF SURVEY

I, Gregory J. Allison, a registered land surveyor in Kansas, do hereby certify that I have been in responsible charge of surveying and platting of "MOORINGS ADDITION REPLAT RESERVE B," an addition to Wichita, Sedgwick County, Kansas, into a Lot, and a Block, the same being accurately set forth in the accompanying plat and described herein:

A replat of Reserve B, The Moorings, Wichita, Sedgwick County, Kansas.

All easements, right-of-ways, setbacks, reserves, together with a portion of the easement by Condemnation Case No. 104, 110 recorded on Misc. Book 150, Page 1, together with any and all other public dedications within the above described property, are hereby vacated and replatted by virtue of K.S.A. 12-512(b).

I hereby certify that the details of this plat are correct to the best of my knowledge and belief this \_\_\_ day of \_\_\_\_\_, 2011.



Gregory J. Allison, PE, LS #1257  
MKEC Engineering Consultants, Inc.  
411 North Webb Road  
Wichita, Kansas 67206

### OWNER'S CERTIFICATES

Know all men by these presents that the undersigned property owner of the land above set forth in the Registered Land Surveyor's Certificate, has caused the same to be surveyed and platted into a Lot, and a Block, the same to be known as "MOORINGS ADDITION REPLAT RESERVE B," an addition to Wichita, Sedgwick County, Kansas.

Easements for the construction and maintenance of public utilities and drainage, as indicated on the accompanying plat are hereby granted to the public.

A drainage plan has been developed for this plat. All drainage easements, rights-of-way, or reserves shall remain at established grades or as modified with the approval of the applicable City or County Engineer, and unobstructed to allow for the conveyance of storm water.

Lot 1, Block 1 is required to adhere to the minimum pad elevation as shown on the "Minimum Pad Elevation" table.

This plat shall conform to the recitals of Moorings Residential Community Unit Plan DP-78.

The Moorings Home Owners Association, a Kansas not for profit corporation

\_\_\_\_\_, President  
Richard W. Hula, President

STATE OF KANSAS, SEDGWICK COUNTY) ss:

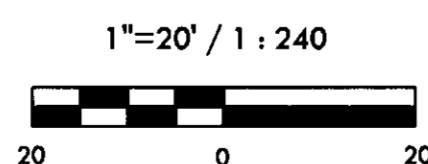
This instrument was acknowledged before me on \_\_\_ day of \_\_\_\_\_, 2011, by Richard W. Hula, President, The Moorings Home Owners Association, a Kansas not for profit corporation.

IN WITNESS WHEREOF, I have hereunto set my hand and affixed my official seal, the day and year last above written.

\_\_\_\_\_, Notary Public  
Notary Public:  
My Term Expires: \_\_\_\_\_

### LEGEND

- Found survey monument see annotation for type
- Set 3/4" rebar w/ MKEC CLS 39 id cap unless otherwise noted
- (M) Measured
- (P) Platted



Basis of Bearing: Platted Bearing of S00°00'30"E along the E. line.  
This plat is surveyed and platted on NAD88-09 using Kansas state plane south zone coordinates, modified to the surface, having a combined adjustment scale factor of 1.000120014

### BENCH MARK

BM #1 City of Wichita disc NW. corner of Meridian and Keywest.  
Elev.=1329.86 (NAVD88)

| MINIMUM PAD ELEVATION<br>LOWEST OPENING |       |                     |
|---|-------|---------------------|
| LOT                                     | BLOCK | ELEVATION<br>NAVD88 |
| 1                                       | 1     | 1324.9              |

