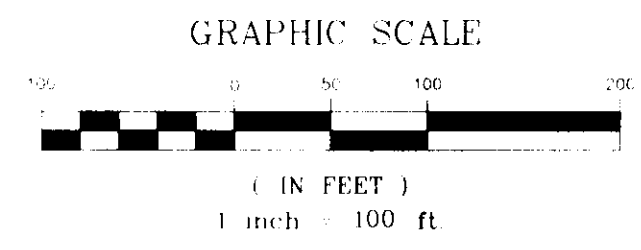
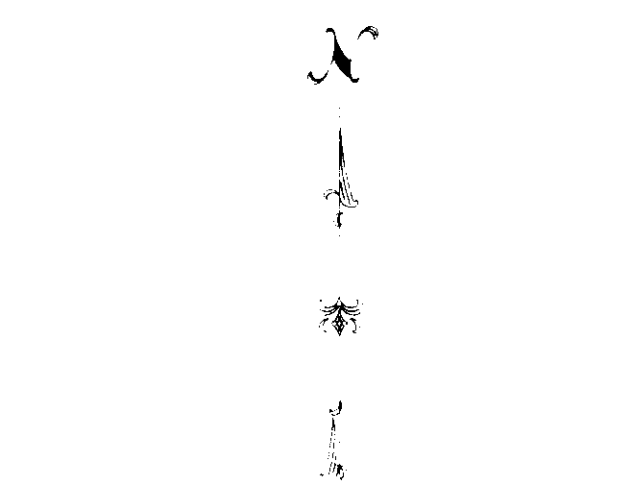
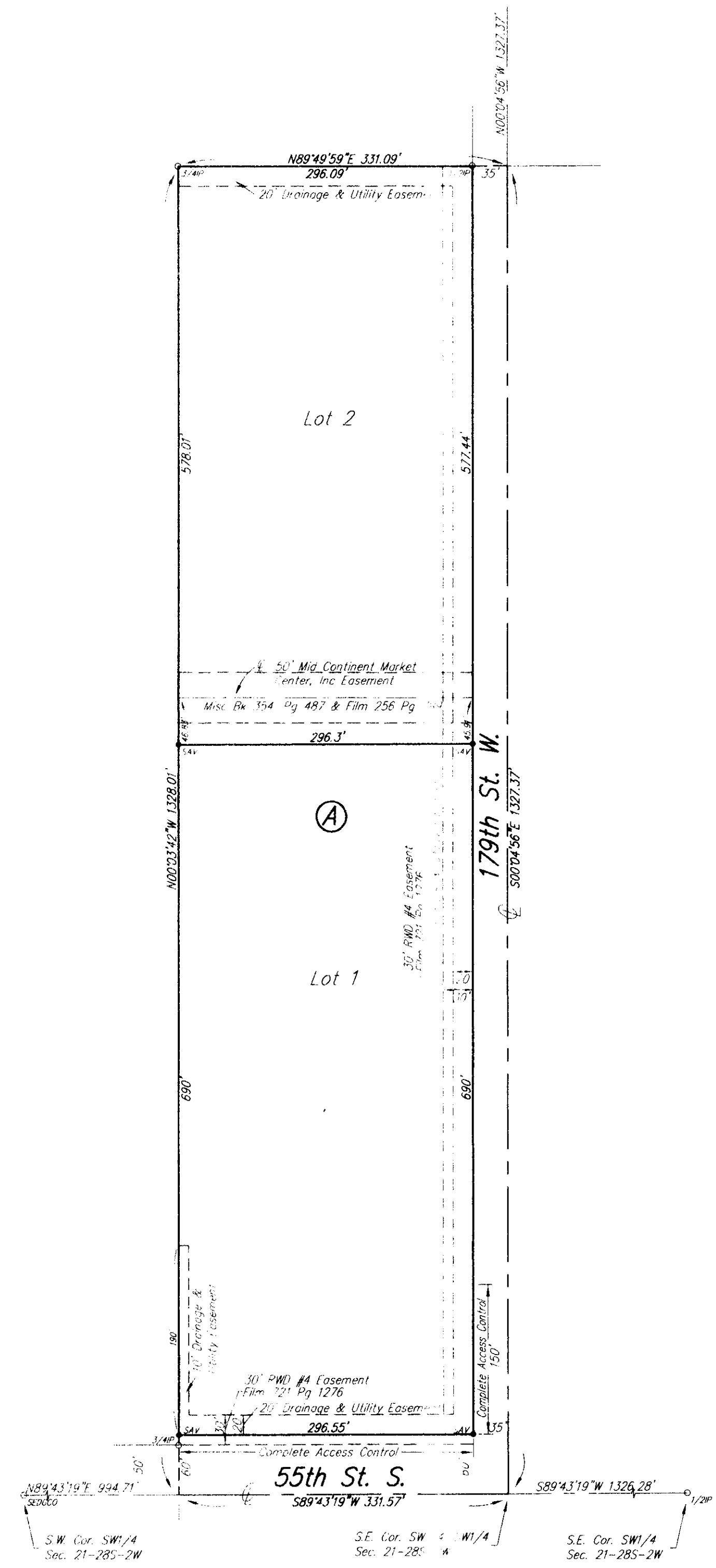
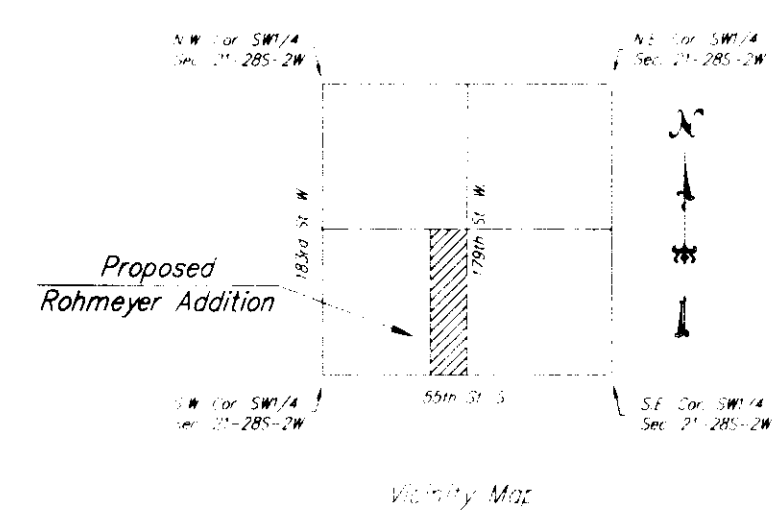


ROHMEYER ADDITION

Sedgwick County, Kansas



SURVEY MARKER LEGEND
 1/2" IRON PIPE (TOP)
 1/2" IRON PIPE (SIDE)
 30000' - SEDGWICK COUNTY CAP
 1/2" IRON PIPE (SET)



State of Kansas) SS
Sedgwick County)

We, Savoy Company, P.A., Surveyors in aforesaid county and state do hereby certify that, under the supervision of the undersigned, we have surveyed and platted "ROHMEYER ADDITION", Sedgwick County, Kansas and that the accompanying plat is a true and correct exhibit of the property surveyed, described as follows:

The E1/2, of the E1/2 of the SW1/4 of the SW1/4 of Sec. 21, Twp.28S, R-2-W of the 6th P.M., Sedgwick County, Kansas.

All Public easements and dedications being vacated by virtue of K.S.A. 12-512(b).
Savoy Company, P.A.

Date: 23 SEP 11

 Mark M. Savoy RLS #788 Surveyor

Know all men by these presents that we, the undersigned, have caused the land described in the surveyors certificate to be platted into Lots, a Block and Streets to be known as "ROHMEYER ADDITION", Sedgwick County, Kansas. The streets are hereby dedicated to and for the use of the public. The utility and drainage easements are hereby granted as indicated for the construction and maintenance of all public utilities and for drainage purposes. A drainage plan has been developed for this plat and all drainage easements and rights-of-way shall remain at established grades or modified with the approval of the Engineer of the appropriate governing body, and unobstructed to allow for the conveyance of stormwater. Access control is hereby granted as indicated on the face of the plat.

Linda M. Rohmeyer

State of Kansas) SS
Sedgwick County)

The foregoing instrument acknowledged before me, this 23rd day of September 2011, by Linda M. Rohmeyer, a single person.

My App't. Exp 10/30/11

 Linda S. Hamby Notary Public
 LINDA S. HAMBY
 NOTARY PUBLIC
 STATE OF KANSAS

This plat of "ROHMEYER ADDITION", Sedgwick County, Kansas has been submitted to and approved by the Wichita-Sedgwick County Metropolitan Area Planning Commission, Wichita, Kansas.

Dated this _____ day of _____, 20____.

Wichita-Sedgwick County Metropolitan Area Planning Commission

Debra Miller Stevens Chair

John L. Schlegel Secretary

This plat approved and all dedications shown hereon, are hereby accepted by the Board of County Commissioners, Sedgwick County, Kansas, this _____ day of _____, 20____.

Dave Unruh Chairman

Kelly B. Arnold County Clerk

Reviewed in accordance with K.S.A. 58-2005 on this _____ day of _____, 20____.

 Deputy County Surveyor
 Sedgwick County, Kansas
 Tricia L. Robello, L.S. #1246

Entered on transfer record this _____ day of _____, 20____.

Kelly B. Arnold County Clerk

State of Kansas) SS
Sedgwick County)

This is to certify that this plat has been filed for record in the office of the Register of Deeds, this _____ day of _____, 20____, at _____ o'clock _____ M: and is duly recorded.

Bill Meek Register of Deeds

Tonya Buckingham Deputy



Savoy Company, P.A.
 Land Surveyors
 PH (316) 265-0005
 FAX (316) 265-0275