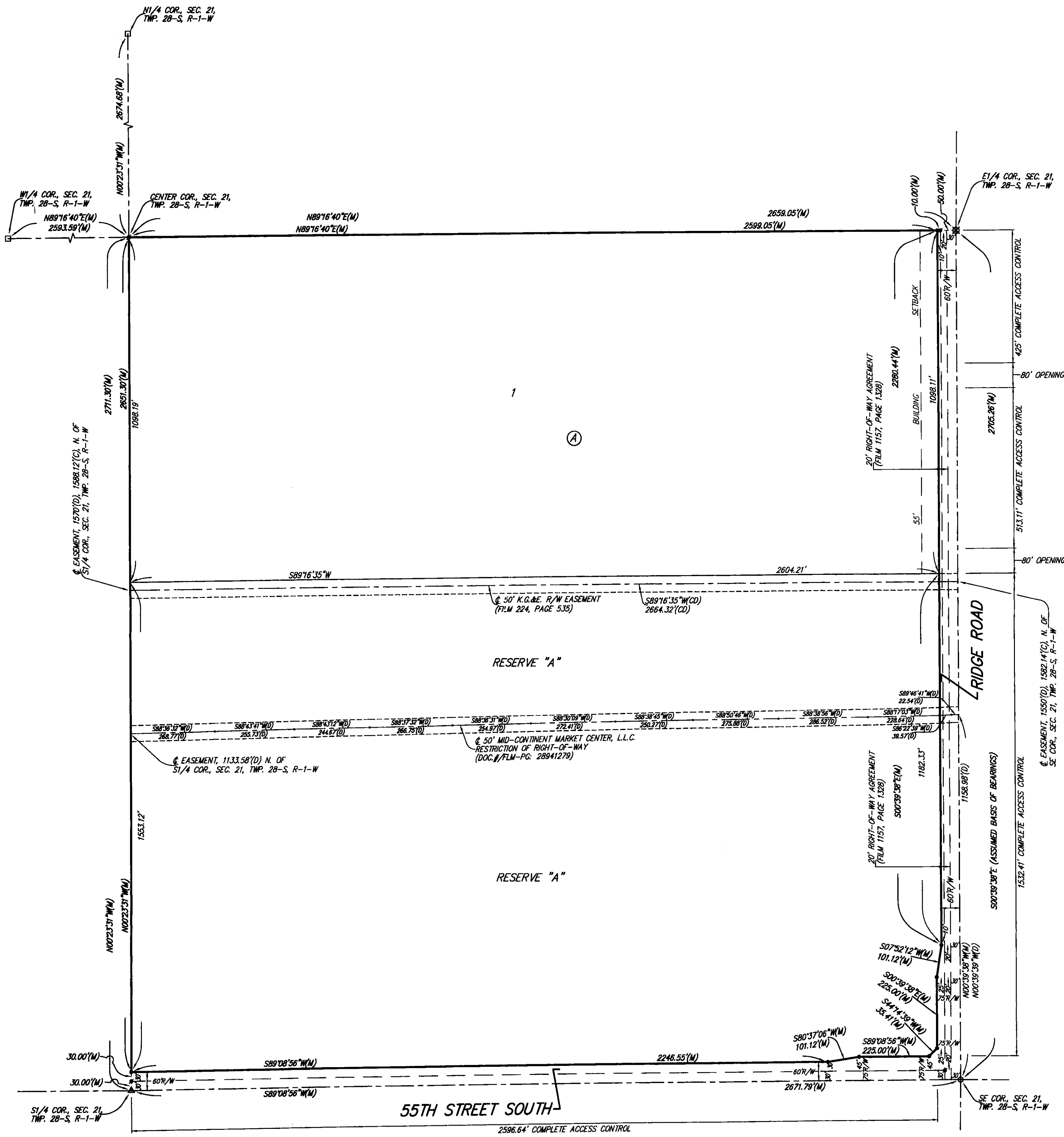


RESOURCE RECOVERY MANAGEMENT ADDITION

SEDGWICK COUNTY, KANSAS

SUB 2011-47



State of Kansas) SS We, Baughman Company, P.A., Surveyors in
Sedgwick County) aforesaid county and state do hereby certify that we have surveyed and
platted "RESOURCE RECOVERY MANAGEMENT ADDITION", Sedgwick County,
Kansas and that the accompanying plat is a true and correct exhibit
of the property surveyed, described as the Southeast Quarter of Section 21,
Township 28 South, Range 1 West of the Sixth Principal Meridian, Sedgwick
County, all being subject to road rights-of-way of record.

Existing public easements and dedications
being vacated by virtue of K.S.A. 12-512b.

Baughman Company, P.A.

Michael G. Conrey
Michael G. Conrey, Surveyor

This plat of "RESOURCE RECOVERY
MANAGEMENT ADDITION", Sedgwick County, Kansas has been submitted to
and approved by the Wichita-Sedgwick County Metropolitan Area Planning
Commission, Wichita, Kansas.

Dated this _____ day of _____, 2011.
Wichita-Sedgwick County Metropolitan Area Planning Commission

_____, Chair
Shawn Farney

_____, Secretary
John L. Schlegel

This plat approved and all dedications
shown hereon accepted by the City Council of the City of Wichita,
Kansas, this _____ day of _____, 2012.

_____, Mayor
Carl Brewer

_____, City Clerk
Karen Sublett

This plat approved and all dedications shown
hereon accepted by the Board of Commissioners of Sedgwick County,
Kansas, this _____ day of _____, 2012.

_____, Chairman
David M. Unruh, First District

ATTEST: _____, County Clerk
Kelly B. Arnold

Reviewed in accordance with K.S.A. 58-2005
on this _____ day of _____, 2012.

_____, Deputy County Surveyor
Tricia L. Robello, L.S. #1246
Sedgwick County, Kansas

Entered on transfer record this _____ day
of _____, 2012.

_____, County Clerk
Kelly B. Arnold

State of Kansas) SS This is to certify that this plat has been
Sedgwick County) filed for record in the office of the Register of Deeds, this _____ day
of _____, 2012 at _____ o'clock _____ M; and is duly recorded.

_____, Register of Deeds
Bill Meek

_____, Deputy
Tonya Buckingham

Know all men by these presents that we,
the undersigned, have caused the land in the surveyors certificate to be
platted into a Lot, a Block, a Reserve and Streets, to be known as
"RESOURCE RECOVERY MANAGEMENT ADDITION", Sedgwick County, Kansas.
The streets are hereby dedicated to and for the use of the public.
Reserve "A" is hereby reserved for open space, lakes, detention/retention
purposes, berms, landscaping, drainage purposes, agricultural and
agriculture related uses, pipelines and related appurtenances as confined to
easement, and electric lines and related appurtenances as confined to
easement. Reserve "A" shall be owned and maintained by the owner of
Lot 1, Block A. Access controls shall be as depicted on the face of the
plat and are hereby granted to the appropriate governing body. The
Minimum Building Pad Elevations for the lowest opening to the structures
shall be as indicated on the face of the plat.

Resource Recovery Management, LLC

John E. Dugan
John E. Dugan, President

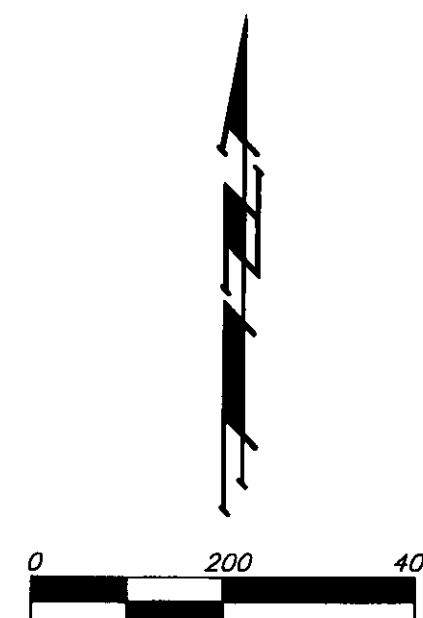
State of Kansas) SS The foregoing instrument acknowledged before
Sedgwick County) me, this _____ day of _____, 2012, by John E. Dugan, President
of the Resource Recovery Management, LLC, on behalf of the limited
liability company.

JUDITH M. TERHUNE
Notary Public - State of Kansas
My App. Expires 11-7-13

Judith M. Terhune
JUDITH M. TERHUNE, Notary Public

My App't. Exp. 11-7-13

MINIMUM BUILDING PAD ELEVATIONS FOR LOWEST OPENING TO THE STRUCTURES		
LOT	BLOCK	ELEVATION
1	A	1311.0



- = #4 REBAR W/ "BAUGHMAN" CAP (SET)
- = #4 REBAR W/ "BAUGHMAN" CAP (FOUND)
- = 3/4" IRON (FOUND)
- ⊗ = #4 REBAR (FOUND)
- = 1/2" IRON (FOUND)
- △ = STONE (FOUND)

BENCHMARK:

BRASS DISC IN CONCRETE, 13" NORTH & 51' WEST
OF THE E1/4 COR., SEC. 21, TWP. 28-S, R-1-W.
ELEV. = 1313.30 NAVD83

TOP OF 1/2" IRON PIPE FLUSH WITH PAVEMENT =
MONUMENT AT SOUTHEAST CORNER OF SEC. 21,
TWP. 28-S, R-1-W.
ELEV. = 1309.82 NAVD83

(M) = MEASURED
(D) = DESCRIBED
(C) = CALCULATED
(CD) = CALCULATED PER
DESCRIBED INFO.

NOTE:
A DRAINAGE PLAN HAS BEEN DEVELOPED FOR THIS SUBDIVISION AND IS ON
FILE IN THE OFFICE OF THE COUNTY ENGINEER OR THE ENGINEER FOR THE
APPROPRIATE GOVERNING BODY. DRAINAGE INTENT SHALL REMAIN AS
DEPICTED OR AS MODIFIED WITH THE APPROVAL OF THE COUNTY ENGINEER OR
THE ENGINEER FOR THE APPROPRIATE GOVERNING BODY. NO OBSTRUCTIONS
WHICH IMPEDE THE FLOW OF THIS DRAINAGE PLAN SHALL BE ALLOWED.

Baughman Company, P.A.
315 Ellis St. Wichita, KS 67211 P 316-262-7271 F 316-262-0149
Baughman ENGINEERING | SURVEYING | PLANNING | LANDSCAPE ARCHITECTURE