

LAMPTON BROTHERS 2ND ADDITION

FINAL TRACING REC'D 1/11/12 Wichita, Sedgwick County, Kansas

State of Kansas) SS
Sedgwick County) FILE COPY

State of Kansas) SS
Sedgwick County)

We, Ruggles & Bohm, P.A., Land Surveyors in aforesaid county and state, do hereby certify that, under the supervision of the undersigned, we have surveyed and platted "LAMPTON BROTHERS 2ND ADDITION", an Addition to Wichita, Sedgwick County, Kansas, and that the accompanying plat is a true and correct exhibit of the property surveyed, described as follows:

The foregoing instrument acknowledged before me, this 10th day of January, 2012, by Douglas Lampton, President/CEO, on behalf of Lampton Brothers Investments, Inc., Notary Public

Lot 1, Block 1, AND Reserve A, Lampton Brothers Addition, an Addition to Wichita, Sedgwick County, Kansas.

My appointment expires May 20, 2015



Lots 1, 3, 5, 7, 9, 11, 13, 15, 17 and 19 on Dover, now Mosley, Throckmorton's Addition to Wichita, Sedgwick County, Kansas.

This plat of "LAMPTON BROTHERS 2ND ADDITION", an Addition to Wichita, Sedgwick County, Kansas, has been submitted to and approved by the Wichita-Sedgwick County Metropolitan Area Planning Commission, Wichita, Kansas.

The east 25 feet of the W1/2 of Lot 1, the E1/2 of Lot 1, and all of Lots 3, 5, 7 and 9, on Dover Street, now Mosley Avenue, and Lots 10 and 12 on Cannon street, now Mead Avenue, all in Hiltons Addition to Hiltons Addition to Wichita, Sedgwick County, Kansas.

Dated this ___ day of _____, 2012.

Wichita-Sedgwick County Metropolitan Area Planning Commission

Shawn Farney, Chair

John L. Schlegel, Secretary

This plat approved and all dedications shown hereon accepted by the City Council of the City of Wichita, Kansas, this ___ day of _____, 2012.

At the Direction of the City Council

Carl Brewer, Mayor

Karen Sublett, City Clerk

Reviewed in accordance with K.S.A. 58-2005 on this ___ day of _____, 2012.

Tricia L. Robello, LS #1246, Deputy County Surveyor Sedgwick County Kansas

Entered on transfer record this ___ day of _____, 2012.

Kelly B. Arnold, County Clerk

State of Kansas) SS
Sedgwick County)

This is to certify that this plat has been filed for record in the office of the Register of Deeds, this ___ day of _____, 2012, at ___ o'clock ___ M, and is duly recorded.

Bill Meek, Register of Deeds

Tonya Buckingham, Deputy



Ruggles & Bohm, P.A.

Land Surveyor

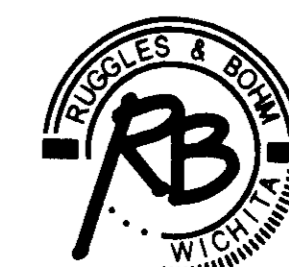
William K. Clevenger

Know all men by these presents that we, the undersigned, have caused the land described in the surveyor's certificate to be platted into a Lot, a Block, and a Reserve, to be known as "LAMPTON BROTHERS 2ND ADDITION", an Addition to Wichita, Sedgwick County, Kansas. The utility easements are hereby granted for the construction and maintenance of all public utilities. The drainage easement is hereby granted to the public as indicated for drainage purposes. Access Controls as indicated are hereby granted to the appropriate governing body. Reserve "A" is hereby reserved for irrigation, landscaping, berms, ponds, drainage, drainage structures, and utilities confined to easements. A drainage plan has been developed for this plat and all drainage easements shall remain at established grades, or as modified with the approval of the City Engineer, and unobstructed to allow for the conveyance of stormwater.

Lampton Brothers Investment, Inc.

Douglas Lampton, President/CEO

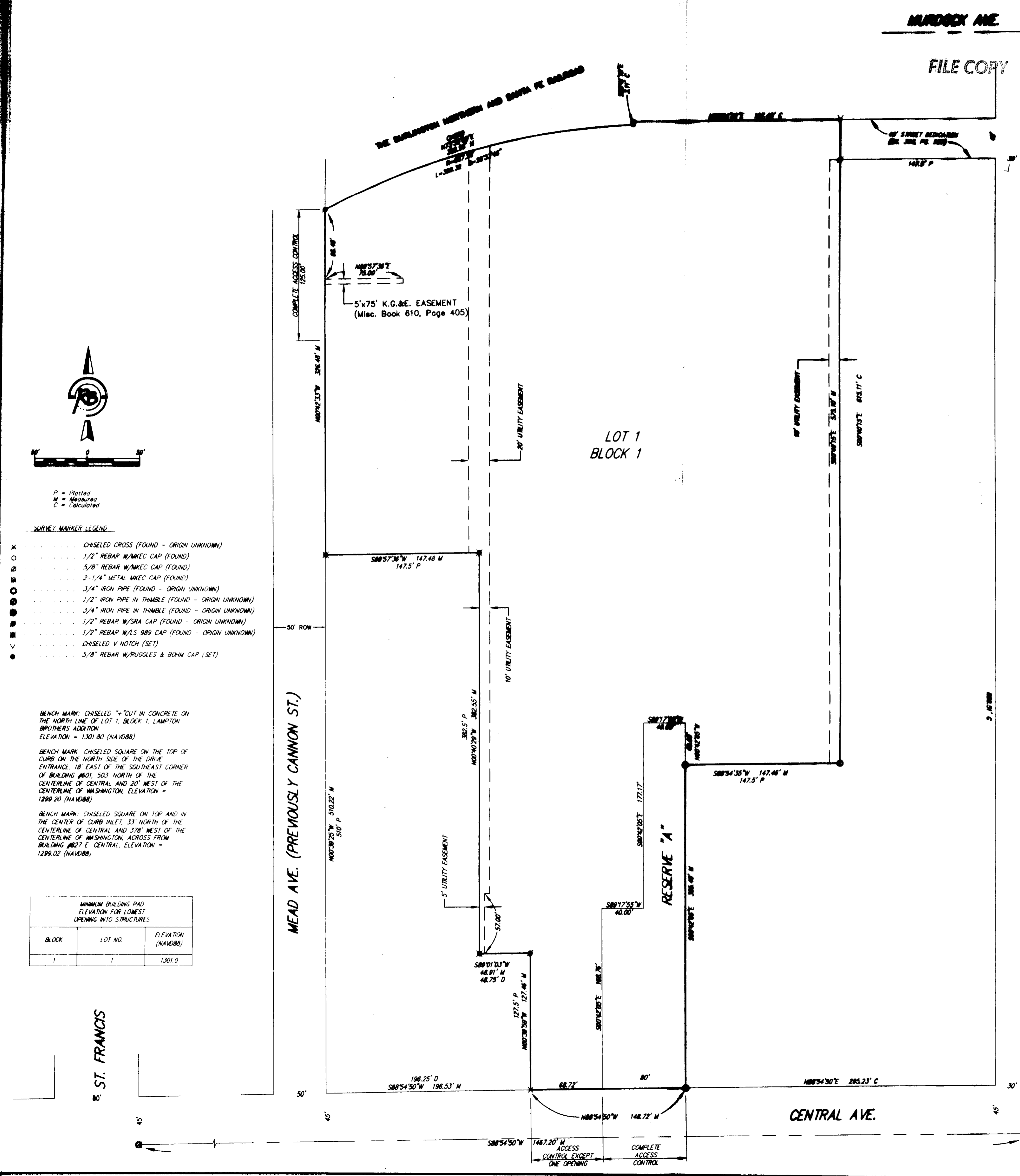
DWG FILE: SURVEY BASE
PROJECT NO. 3856P
JANUARY 10, 2012



Ruggles & Bohm, P.A.

Engineering, Surveying, Land Planning

924 North Main (316) 264-8008
Wichita, Kansas 67203 (316) 264-4621 fax
www.rbkansas.com E-mail: info@rbkansas.com



- MARKER LEGEND**
- CHISELED CROSS (FOUND - ORIGIN UNKNOWN)
 - 1/2" REBAR W/ W/KEC CAP (FOUND)
 - 5/8" REBAR W/ W/KEC CAP (FOUND)
 - 2-1/4" METAL W/KEC CAP (FOUND)
 - 3/4" IRON PIPE (FOUND - ORIGIN UNKNOWN)
 - 1/2" IRON PIPE IN THIMBLE (FOUND - ORIGIN UNKNOWN)
 - 3/4" IRON PIPE IN THIMBLE (FOUND - ORIGIN UNKNOWN)
 - 1/2" REBAR W/SRA CAP (FOUND - ORIGIN UNKNOWN)
 - 1/2" REBAR W/S 989 CAP (FOUND - ORIGIN UNKNOWN)
 - CHISELED V NOTCH (SET)
 - 5/8" REBAR W/RUGGLES & BOHM CAP (SET)

BENCH MARK: CHISELED "4" OUT IN CONCRETE ON THE NORTH LINE OF LOT 1, BLOCK 1, LAMPTON BROTHERS ADDITION. ELEVATION = 1301.80 (NAVD88)

BENCH MARK: CHISELED SQUARE ON THE TOP OF CURB ON THE NORTH SIDE OF THE DRIVE ENTRANCE, 18' EAST OF THE SOUTHEAST CORNER OF BUILDING #601, 50.3' NORTH OF THE CENTERLINE OF CENTRAL AND 20' WEST OF THE CENTERLINE OF WASHINGTON. ELEVATION = 1299.20 (NAVD88)

BENCH MARK: CHISELED SQUARE ON TOP AND IN THE CENTER OF CURB INLET, 33' NORTH OF THE CENTERLINE OF CENTRAL AND 378' WEST OF THE CENTERLINE OF WASHINGTON, ACROSS FROM BUILDING #627 E. CENTRAL. ELEVATION = 1299.02 (NAVD88)

BLOCK	LOT NO	ELEVATION (NAVD88)
1	1	1301.0

ST. FRANCIS

MURDOCK AVE

FILE COPY

40' STREET DEDICATION

148.5' P

148.5' P

148.5' P

148.5' P

148.5' P

148.5' P

148.5' P

148.5' P

148.5' P

148.5' P

148.5' P

148.5' P

148.5' P

148.5' P

148.5' P

148.5' P

148.5' P

148.5' P

148.5' P

148.5' P

148.5' P

148.5' P