

State of Kansas) SS We, Carlson-Baughman Company, P.A., Surveyors in aforesaid county and state do hereby certify that we have surveyed and platted "ROMAN WINTER ADDITION", Sedgwick County, Kansas, and that the accompanying plat is a true and correct exhibit of the property surveyed, described as a tract of land situated in Government Lot 2 and the East Half of the Northwest Quarter of Section 7, Township 26 South, Range 2 West of the Sixth Principal Meridian, Sedgwick County, Kansas, more particularly described as follows:

Beginning at the Southwest Corner of said Northwest Quarter, also known as the Southwest Corner of said Government Lot 2; THENCE N 01°02'02" W along the West Line of said Northwest Quarter a distance of 661.61 feet; THENCE N 88°26'23" E parallel with the South line of said Northwest Quarter a distance of 251.96 feet; THENCE S 01°02'02" E parallel with the West line of said Northwest Quarter a distance of 95.83 feet; THENCE N 88°26'23" E parallel with the South line of said Northwest Quarter a distance of 125.65 feet; THENCE S 46°01'33" E a distance of 283.15 feet; THENCE S 01°02'02" E parallel with the West line of said Northwest Quarter a distance of 170.69 feet; THENCE N 88°26'23" E parallel with the South line of said Northwest Quarter a distance of 611.60 feet; THENCE S 01°02'02" E parallel with the West line of said Northwest Quarter to the South line of said Northwest Quarter a distance of 193.00 feet; THENCE S 88°26'23" W along the South line of said Northwest Quarter a distance of 1189.41 feet to the POINT OF BEGINNING.

Said tract contains 10.30 acres more or less and is subject to any road rights-of-way of record.

Existing public easements and dedications being vacated by virtue of K.S.A. 12-512b.

Carlson-Baughman Company, P.A.

Brian L. Peltier
 Brian L. Peltier, L.S. #1517, Surveyor

OWNER'S CERTIFICATE
 Know all men by these presents that the undersigned property owners of the land above set forth in the Certificate of Survey, has caused the same to be surveyed and platted into Lots, a Block, and a Reserve the same to be known as "ROMAN WINTER ADDITION", Sedgwick County, Kansas.

The utility easements are hereby granted as indicated for the construction and maintenance of all public utilities. The street is hereby dedicated to and for the use of the public. Reserve "A" is hereby reserved for access purposes to and from Lots 1, 2, and 3, Block A. Reserve "A" shall be owned and maintained by the owner of Lot 3, Block A. Access controls shall be as depicted on the face of the plat and are hereby granted to the appropriate governing body.

Owner of Lot 1 and Lot 2: Raymond F. Winter, Charles C. Winter, Marilyn R. Wetta, and Sharon A. Lies, Co-Trustees of the Roman C. Winter and Frances J. Winter Revocable Living Trust dated the 26th day of March, 1992, and amended on March 28th, 2007.

Raymond F. Winter
 Raymond F. Winter, Co-Trustee

Charles C. Winter
 Charles C. Winter, Co-Trustee

State of Kansas) SS The foregoing instrument acknowledged before me, this 11th day of February, 2012, by Raymond F. Winter and Charles C. Winter, Co-Trustees of the Roman C. Winter and Frances J. Winter Revocable Living Trust dated the 26th day of March, 1992, and amended on March 28th, 2007, on behalf of the trust.

Suzanne M. Vaughn, Notary Public

My App'l. Exp. 6/14/2014

Marilyn R. Wetta
 Marilyn R. Wetta, Co-Trustee

Sharon A. Lies
 Sharon A. Lies, Co-Trustee

State of Kansas) SS The foregoing instrument acknowledged before me, this 11th day of February, 2012, by Marilyn R. Wetta and Sharon A. Lies, Co-Trustees of the Roman C. Winter and Frances J. Winter Revocable Living Trust dated the 26th day of March, 1992, and amended on March 28th, 2007, on behalf of the trust.

Suzanne M. Vaughn, Notary Public

My App'l. Exp. 6/14/2014

Owner of Lot 3: Charles Daniel Lies and Sharon Ann Lies

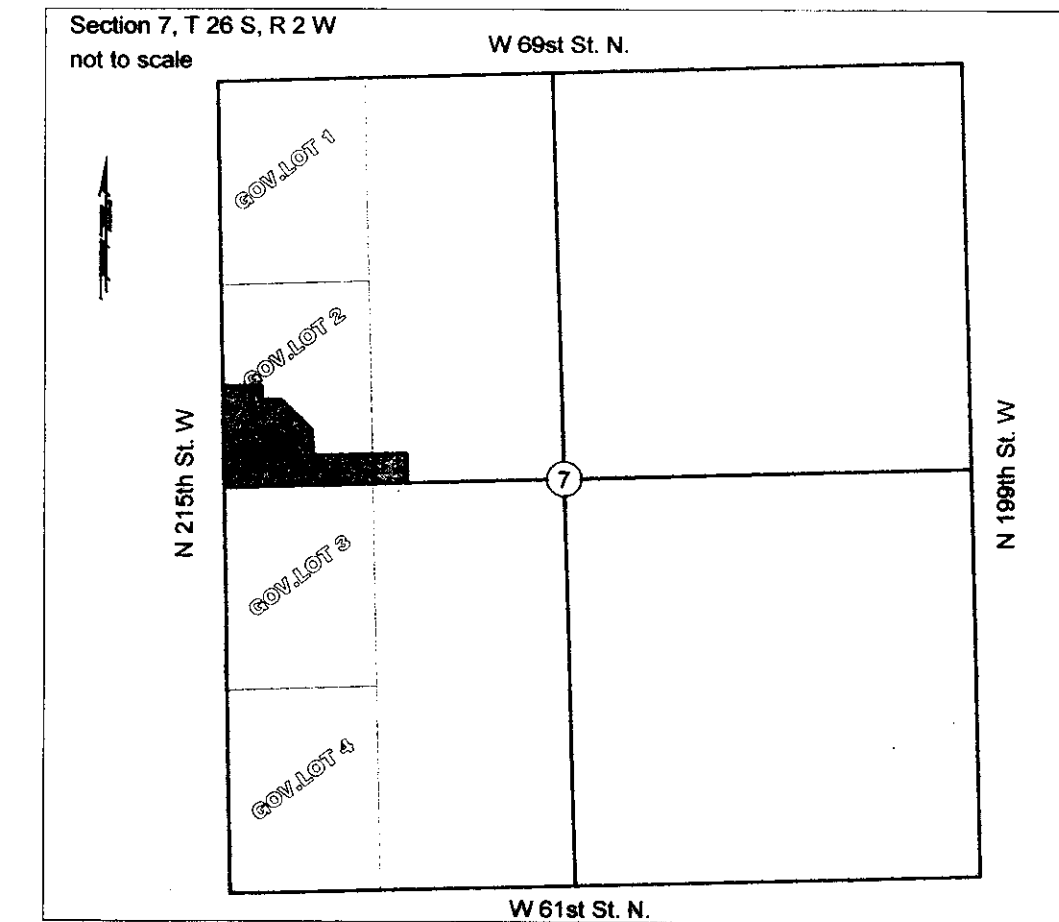
Charles Daniel Lies
 Charles Daniel Lies

Sharon Ann Lies
 Sharon Ann Lies

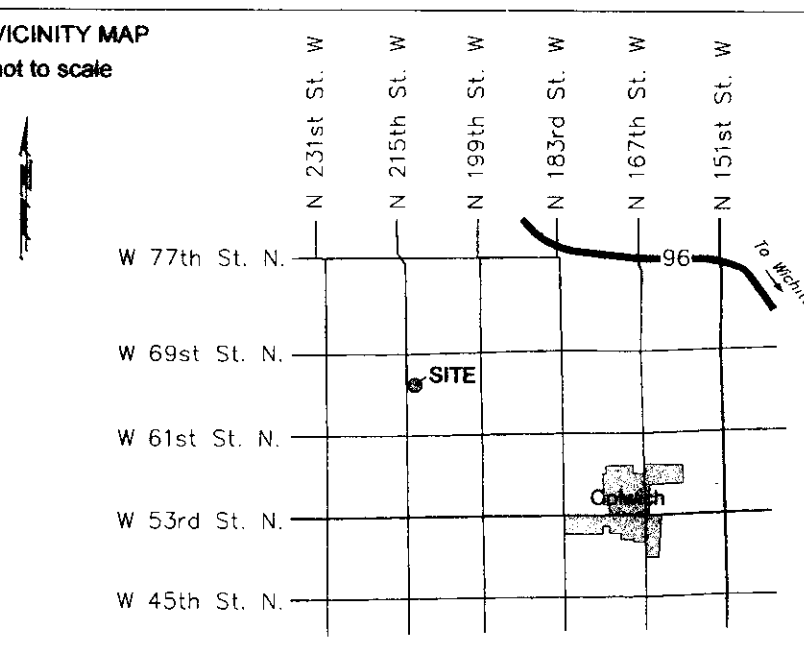
State of Kansas) SS The foregoing instrument acknowledged before me, this 11th day of February, 2012, by Charles Daniel Lies and Sharon Ann Lies, husband and wife.

Kathy E. Phipps, Notary Public

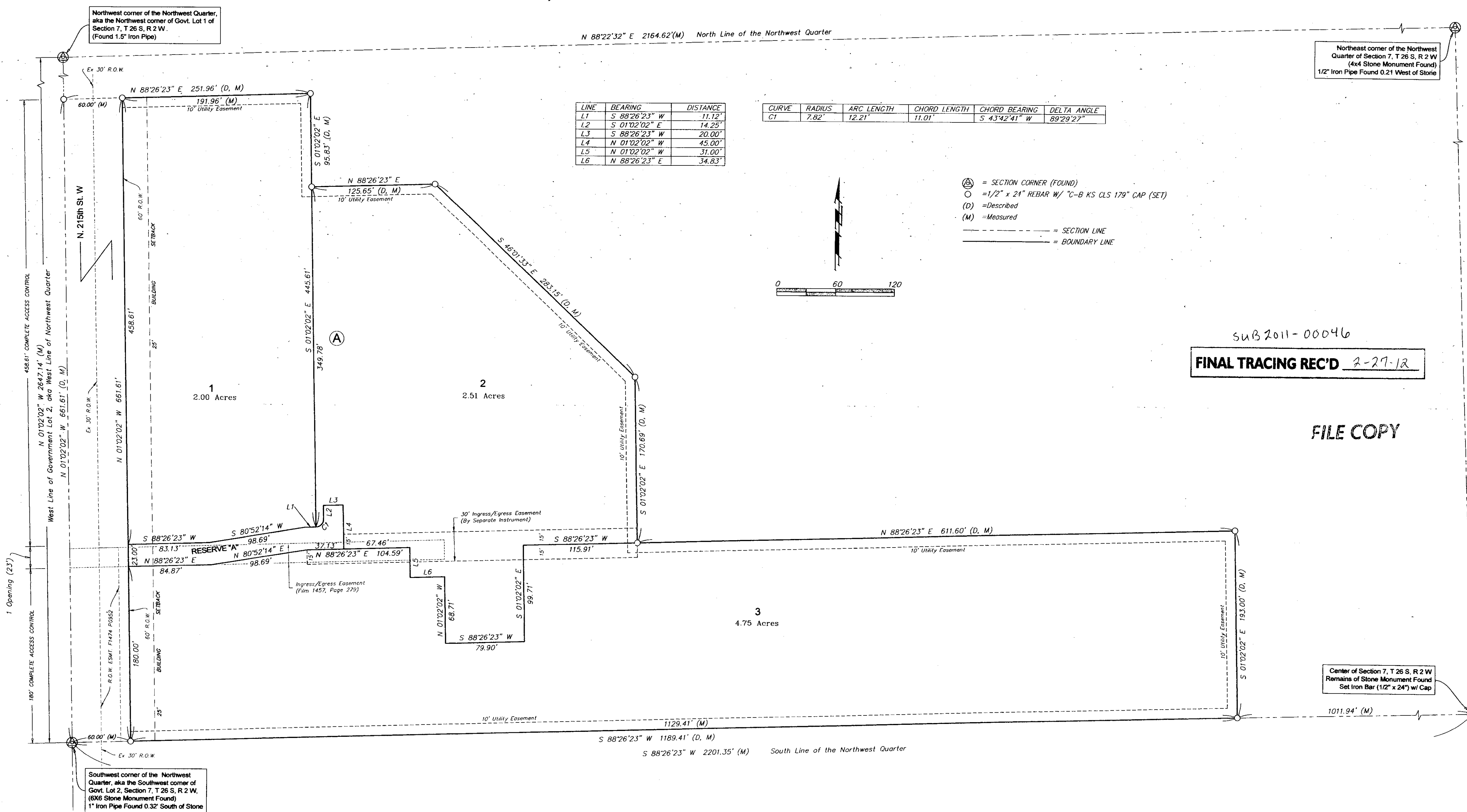
My App'l. Exp. 6-22-2013



NOTE: A MASTER GRADING PLAN FOR DRAINAGE HAS BEEN DEVELOPED FOR THIS SUBDIVISION AND IS ON FILE IN THE OFFICE OF THE COUNTY ENGINEER OR THE APPROPRIATE GOVERNING BODY. ALL DRAINAGE EASEMENTS, RIGHTS-OF-WAY, OR RESERVES SHALL REMAIN AT ESTABLISHED GRADES OR AS INDICATED WITH THE APPROVAL OF THE COUNTY ENGINEER OR THE ENGINEER FOR THE APPROPRIATE GOVERNING BODY, AND SHALL REMAIN UNRESTRICTED TO ALLOW FOR THE CONVEYANCE OF STORMWATER.



ROMAN WINTER ADDITION SEDGWICK COUNTY, KANSAS



sub 2011-00046
FINAL TRACING REC'D 2-27-12

FILE COPY

MORTGAGE CERTIFICATE

Legacy Bank, FKA State Bank of Colwich, holder of a mortgage on a portion of the above described property, does hereby consent to the plat of "ROMAN WINTER ADDITION, SEDGWICK COUNTY, KANSAS".

Legacy Bank, FKA State Bank of Colwich

Frank A. Suellentrop
 Frank A. Suellentrop, President

State of Kansas) SS The foregoing instrument acknowledged before me, this 21st day of February, 2012, by Frank A. Suellentrop, President of Legacy Bank.

My App'l. Exp. 02/01/2014

COUNTY SURVEYOR

State of Kansas) SS Sedgwick County) Reviewed in accordance with K.S.A. 58-2005 on this ___ day of ___, 2012.

Tricia L. Robello, LS #1246, Deputy County Surveyor, Sedgwick County, Kansas

PLANNING COMMISSION CERTIFICATE

This plat of "ROMAN WINTER ADDITION" has been submitted to and approved by the Wichita-Sedgwick County Metropolitan Area Planning Commission, Wichita, Kansas.

Dated this ___ day of ___, 2012

WICHITA-SEDGWICK COUNTY METROPOLITAN AREA PLANNING COMMISSION

Shawn Farney, Chair

John L. Schlegel, Secretary

GOVERNING BODY CERTIFICATE

The dedications shown on this plat are hereby accepted and this plat is hereby approved by the Board of County Commissioners of Sedgwick County, Kansas.

Dated this ___ day of ___, 2012

Tim R. Norton, Second District, Chairman

Kelly B. Arnold, County Clerk

TRANSFER RECORD

State of Kansas) SS Sedgwick County) Entered on transfer record this ___ day of ___, 2012

Kelly B. Arnold, County Clerk

REGISTER OF DEEDS CERTIFICATE

State of Kansas) SS Sedgwick County) This is to certify that this instrument was filed for record in the Register of Deeds office this ___ day of ___, 2012, at ___ o'clock ___ M.; and is duly recorded.

Bill Meek, Register of Deeds

Tonya E. Buckingham, Deputy

CB CARLSON-BAUGHMAN
 ENGINEERING | SURVEYING | GIS | MAPPING
 316.423.7770 | 450 N. 159th St. East, STE A | WICHITA, KANSAS 67203
 PROJECT NO. 11-07-648 | SURVEYED: TPH | DRAWN: TPH | APPROVED: BLP