

BRANDT COMMERCIAL 2ND ADDITION

TO WICHITA, SEDGWICK COUNTY, KANSAS

State of Kansas) SS
Sedgwick County)

We, Savoy Company, P.A., Surveyors in aforesaid county and state do hereby certify that, under the supervision of the undersigned, we have surveyed and platted "BRANDT COMMERCIAL 2ND ADDITION" to Wichita, Sedgwick County, Kansas and that the accompanying plat is a true and correct exhibit of the property surveyed, described as, and being a replat of:

Lots 1, 2 and 5, Block 1, Brandt Commercial Addition, to Wichita, Sedgwick County, Kansas, except that part of Lot 5 described as beginning at the Southwest corner of Lot 3, in said Block 1; thence N88°34'50"W, along the South line of said Lot 3 extended West, a distance of 30.00 feet; thence N03°44'55"W, parallel with the West line of said Lot 3, 150.00 feet to a point on the South line of said Lot 1; thence S88°34'50"E, along the South line of said Lot 1, 30.00 feet to the Northwest corner of said Lot 3; thence S03°44'55"E, along the West line of said Lot 3, 150.00 feet to the point of beginning.

This plat of "BRANDT COMMERCIAL 2ND ADDITION", Wichita, Sedgwick County, Kansas, has been submitted to and approved by the Wichita-Sedgwick County Metropolitan Area Planning Commission, Wichita, Kansas.

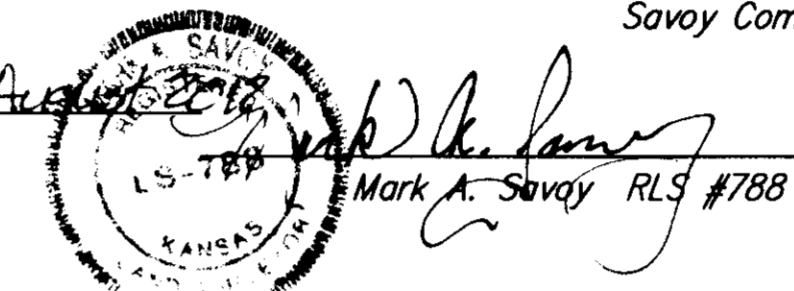
Dated this _____ day of _____, 2012.

Wichita-Sedgwick County Metropolitan Area Planning Commission

All Public easements and dedications being vacated by virtue of K.S.A. 12-512b.

Savoy Company, P.A.

Date 8 August 2012 _____ Surveyor



Know all men by these presents that We, the undersigned, have caused the land described in the surveyors certificate to be platted into Lots and a Block to be known as "BRANDT COMMERCIAL 2ND ADDITION" to Wichita, Sedgwick County, Kansas. The utility easements are hereby granted for the construction and maintenance of all public utilities. The drainage easement is hereby granted as indicated for drainage purposes. The wall easements are hereby granted as indicated for the construction and maintenance of a private screening wall and utility main lines and service lines are allowed to cross the easements. A drainage plan has been developed for this plat and all drainage easements, rights-of-way, or reserves shall remain at established grades, or as modified with the approval of the City Engineer, and unobstructed to allow for the conveyance of stormwater. Access Control is hereby granted as shown on face of the Plat.

Thirteenth & Maize LLC

Alicino Cruzero Managing Member

Kansas CVS Pharmacy, L.L.C.
a Kansas limited liability company

Kristine L. Donabedian Assistant Secretary

This plat approved and all dedications shown hereon, accepted by the City Council of the City of Wichita, Kansas, this _____ day of _____, 2012.

Carl Brewer Mayor

Karen Sublett City Clerk

Reviewed in accordance with K.S.A. 58-2005 on this _____ day of _____, 2012.

Tricia L. Robello, LS #1246 Deputy County Surveyor Sedgwick County Kansas

State of Kansas) SS
Sedgwick County)

The foregoing instrument acknowledged before me, this 16th day of August 2012, by Alicino Cruzero, Managing Member of Thirteenth & Maize LLC, a Kansas limited liability company, on behalf of the company.

Notary Public

My App't. Exp. _____

Entered on transfer record this _____ day of _____, 2012.

Kelly B. Arnold County Clerk

State of Kansas) SS
Sedgwick County)

This is to certify that this plat has been filed for record in the office of the Register of Deeds, this _____ day of _____, 2012, at o'clock _____ M. and is duly recorded.

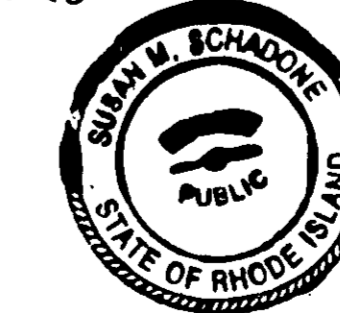
Bill Meek Register of Deeds

Tonya Buckingham Deputy

State of Rhode Island) SS
County of Providence)

The foregoing instrument acknowledged before me, this 14th day of August 2012, by Kristine L. Donabedian Assistant Secretary of Kansas CVS Pharmacy, L.L.C., a Kansas limited liability company, on behalf of the company.

Susan M. Schadone Notary Public
My App't. Exp. 03/09/2016 ISS# 46180 Susan M. Schadone



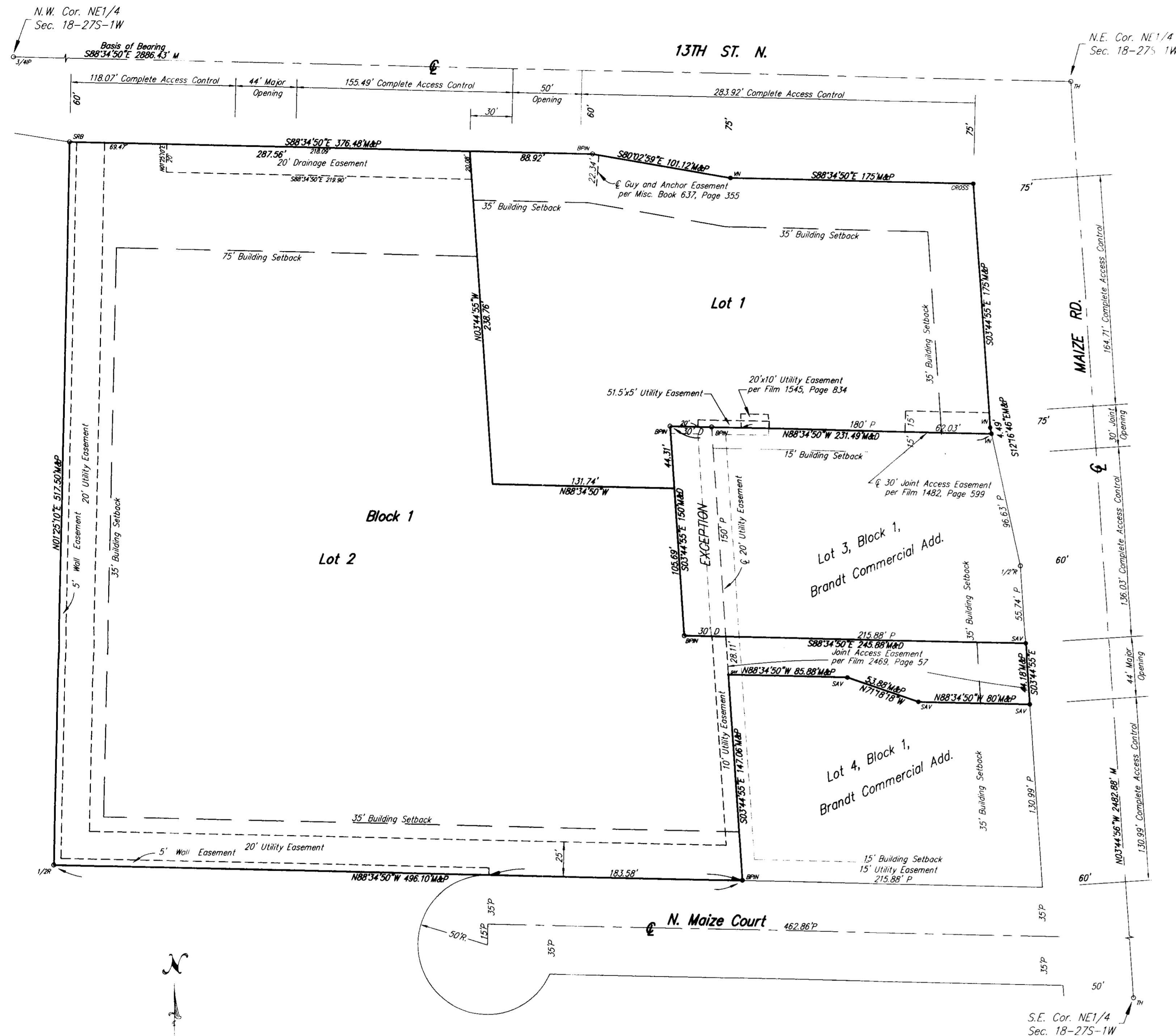
Savoy Company, P.A.
Land Surveyors

PH (316) 265-0065
FAX (316) 265-0275

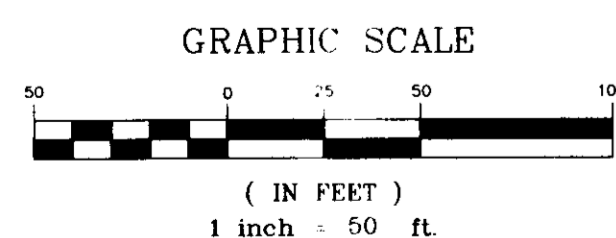
433 S. Hydraulic, Wichita, KS 67211-1911

www.savoyco.com

PROJECT NO. 120D12850 P



Note: For Additional Building Setback Requirements See Associated Community Unit Plan DP-214.



LEGEND

- * 3/4" IP 3/4" IRON PIPE (FOUND)
- * TH CITY OF WICHITA CONTROL
- * 1/2" R 1/2" REBAR (FOUND)
- * SKV 1/2" REBAR W/BAUGHMAN CAP (SET)
- * BPN 1/2" REBAR W/BAUGHMAN CAP (FOUND)
- * SRB 1/2" REBAR W/SRB CAP (FOUND)
- * CROSS CHISELED CROSS (FOUND)
- * V-NOTCH CHISELED V-NOTCH (FOUND)

M = Measured
D = Described
P = Platted

ELEVATIONS = NAVD88

On Site Benchmarks:

B.M. #1: Square Cut top of Walk @ S.E. Corner Lot 2, Block 1, Brandt Commercial Addition
Elevation = 1345.59 NAVD88

B.M. #2: "X" Cut on Walk 100' W. & 10' S. N.E. Corner of Lot 2, Block 1, Brandt Commercial Addition
Elevation = 1348.49 NAVD88

B.M. #3: Square Cut top of Curb @ N.W. Corner Lot 2, Block 1, Brandt Commercial Addition
Elevation = 1347.43 NAVD88

