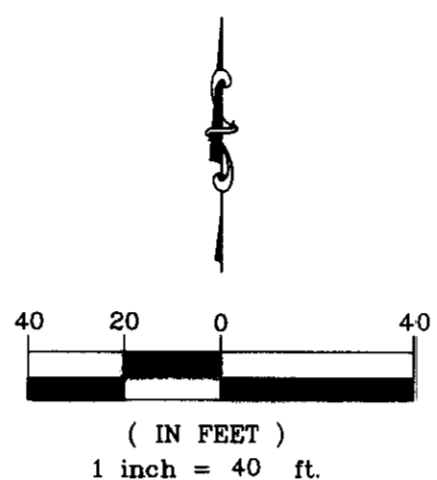
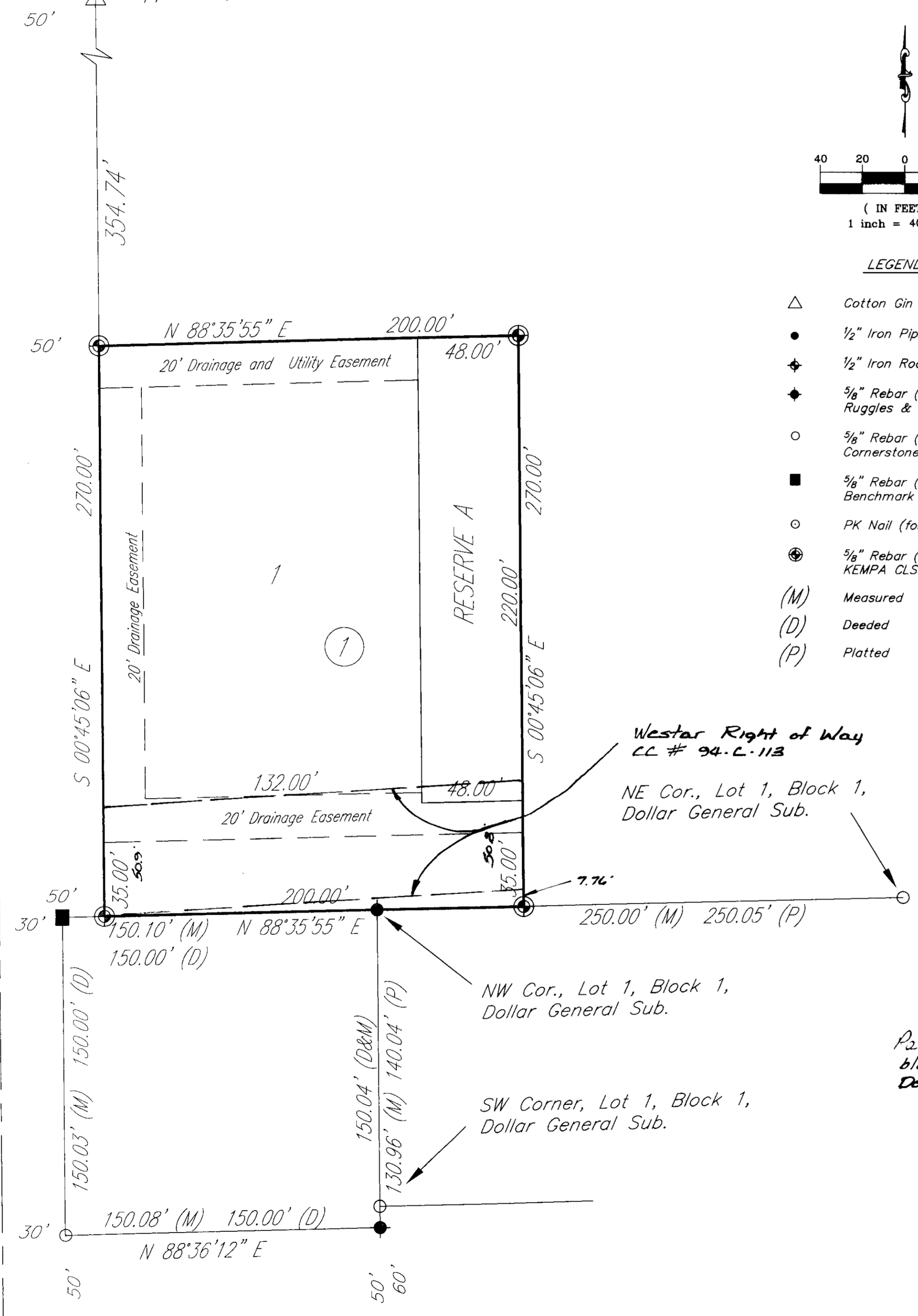


NW Cor, NE 1/4, SW 1/4,
Sec. 14, T26S, R1E

SW Cor., Lot 1,
Opportunity Center Addition

Clifton Street

S 00°45'06" E



LEGEND

- △ Cotton Gin Spindle (found)
- 1/2" Iron Pipe (found)
- ◆ 1/2" Iron Rod (found)
- ◆ 5/8" Rebar (found) Ruggles & Bohm
- 5/8" Rebar (found) Cornerstone Surveying
- 5/8" Rebar (found) Benchmark Surveying
- PK Nail (found)
- ⊙ 5/8" Rebar (set) KEMPA CLS #157
- (M) Measured
- (D) Deeded
- (P) Platted

Wester Right of Way
CL # 94-C-113
NE Cor., Lot 1, Block 1,
Dollar General Sub.

NW Cor., Lot 1, Block 1,
Dollar General Sub.

SW Corner, Lot 1, Block 1,
Dollar General Sub.

Parcel is covered with a
blanket easement by KG & E
Dec. # / Fim. Pg: 20552579

SW Cor, SE 1/4, SW 1/4
Sec. 14, T26S, R1E

47th Street South

FINAL TRACING REC'D 8-22-12

FILE COPY U-Save Tire Addition
Sub2011-58 Sedgwick County, Kansas

Part of the SW 1/4, Section 14, Township 28 South, Range 1 East of the 6th. P.M.

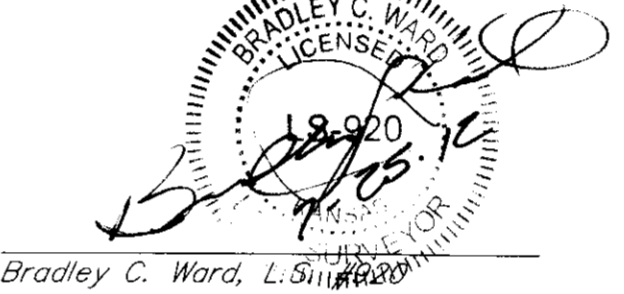
State of Kansas)
County of Sedgwick) SS

I, Bradley C. Ward, a licensed land surveyor of the State of Kansas, do hereby certify that the following described tract of land was surveyed on the 17th day of November, 2011 and the accompanying final plat prepared and that all the monuments shown herein actually exist and their positions are correctly shown to the best of my knowledge and belief:

LEGAL DESCRIPTION

The South 270 feet of the West 200 feet of the following described parcel:
That part of the Southeast Quarter of the Southwest Quarter of Section 14, Township 28 South, Range 1 East of the Sixth Principal Meridian, Sedgwick County, Kansas, lying West of the Atchison, Topeka, and Santa Fe Railway Company right-of-way; EXCEPT the West 180 feet of the South 200 feet thereof; AND EXCEPT the North 1125.22 feet of the West 50 feet thereof for highway; AND EXCEPT the South 50 feet thereof for road; AND EXCEPT that part platted as Opportunity Center Addition, Sedgwick County, Kansas; AND EXCEPT that part platted as Dollar General Subdivision, an Addition to Sedgwick County, Kansas.

All easements and Rights of Way within said tract are hereby vacated by virtue of K.S.A. 17-1001.



State of Kansas)
County of Sedgwick) SS

Know all men by these presents, that we, the undersigned, have caused the land described in the surveyor's certificate to be platted into a Lot, Block and Reserve, to be known as U-Save Tire Addition, Sedgwick County, Kansas. Any easements are hereby granted as indicated for constructing, maintaining, operating, and repairing public utilities. Reserve A is platted for drainage, utilities, landscaping and irrigation. A drainage plan has been developed for the plot and all drainage easements, rights-of-way, or reserves shall remain at established grades or as modified with the approval of the applicable City or County Engineer, and unobstructed to allow for the conveyance of stormwater. And further that the land contained herein is held and shall be conveyed subject to any applicable restrictions, reservations and covenants now on file or hereafter filed in the Office of the Register of Deeds of Sedgwick County, Kansas.

Owners:

Stanley Swope
By: Stanley Swope Date: 8-1-12
Maureen Swope
By: Maureen Swope Date: 8-1-12

State of Kansas)
County of Sedgwick) SS

This instrument was acknowledged before me on this 1st day of August, 2012, Stanley Swope, Owner.

Joanne Doris Swanland
Notary Public
My Commission Expires: 11-18-13

State of Kansas)
County of Sedgwick) SS

This instrument was acknowledged before me on this 1st day of August, 2012, Maureen Swope, Owner.

Joanne Doris Swanland
Notary Public
My Commission Expires: 11-18-13

State of Kansas)
County of Sedgwick) SS

This plat of U-Save Tire Addition, Sedgwick County, Kansas, has been submitted to and approved by the Wichita-Sedgwick County Metropolitan Area Planning Commission, Sedgwick County, Kansas. Dated this 23 day of DECEMBER, 2012.

Shawn Farney
Shawn Farney, Chair

John L. Schlegel, Secretary

State of Kansas)
County of Sedgwick) SS

This plat approved and all dedications shown hereon accepted by the City Council of the City of Wichita, Kansas, this _____ day of _____, 2012.

At the Direction of the City Council

Carl Brewer, Mayor

Karen Sublett, City Clerk

This plat approved and all dedications shown hereon accepted by the Board of County Commissioners of Sedgwick County, Kansas, this _____ day of _____, 2012.

At the Direction of the Board of County Commissioners

Tim R. Norton, Second District

Kelly B. Arnold, County Clerk

Entered on transfer record this _____ day of _____, 2012.

Kelly B. Arnold, County Clerk

Approved as to form:

Gary Rebenstorf, Director of Law

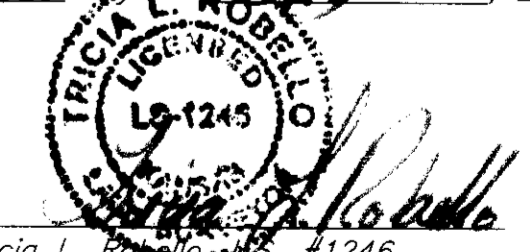
State of Kansas)
County of Sedgwick) SS

This is to certify that this plat has been filed for record in the Office of the Register of Deeds this _____ day of _____, 2012, at _____ o'clock _____ M; and is duly recorded.

Bill Meek, Register of Deeds

Tonya Buckingham, Deputy

Reviewed in accordance with K.S.A. 58-2005 on this _____ day of _____, 2012.



Tricia L. Robella, L.S. #1246
Deputy County Surveyor
Sedgwick County, Kansas

Filename: 11094\U-SAVE TIRES FINAL PLAT.dwg prepared: 7-25-2012

kemiller engineering

516 S. Market, Wichita, KS 67202 316/284-0242