

TIMBER RIDGE 5TH ADDITION

WICHITA, SEDGWICK COUNTY, KANSAS

State of Kansas) SS We, Baughman Company, P.A., Surveyors in Sedgwick County do hereby certify that we have surveyed and platted "TIMBER RIDGE 5TH ADDITION", Wichita, Sedgwick County, Kansas and that the accompanying plat is a true and correct exhibit of the property surveyed, described as and being a replat of Lot 5, Timber Ridge 4th Addition, Wichita, Sedgwick County, Kansas, EXCEPT that part described as beginning of the southwest corner of Lot 4 in said Timber Ridge 4th Addition; thence N86°30'23"E along the south line of said Lot 4, 135.00 feet to the southeast corner of said Lot 4; thence S02°50'33"E along the extended east line of said Lot 4, 20.00 feet; thence S86°30'23"W, 135.00 feet to an intersection with the extended west line of said Lot 4; thence N02°50'33"W, 20.00 feet to the point of beginning.

All being situated in the Northwest Quarter of Section 8, Township 27 South, Range 1 West of the Sixth Principal Meridian, Sedgwick County, Kansas

Existing public easements and dedications being vacated by virtue of K.S.A. 12-512b.

Baughman Company, P.A.



Michael G. Conrey, Surveyor

This plat of "TIMBER RIDGE 5TH ADDITION", Wichita, Sedgwick County, Kansas has been submitted to and approved by the Wichita-Sedgwick County Metropolitan Area Planning Commission, Wichita, Kansas.

Dated this _____ day of _____, 2012, Wichita-Sedgwick County Metropolitan Area Planning Commission

Shawn Farney, Chair

John L. Schlegel, Secretary

This plat approved and all dedications shown hereon accepted by the City Council of the City of Wichita, Kansas this _____ day of _____, 2012.

Carl Brewer, Mayor

Karen Sublett, City Clerk

Reviewed in accordance with K.S.A. 58-2005 on this _____ day of _____, 2012.

Tricia L. Robello, L.S. #1246, Deputy County Surveyor, Sedgwick County, Kansas

Bennington Place, LLC, a Kansas limited liability company
Michael J. Brand, Member

State of Kansas) SS The foregoing instrument acknowledged before me, this 17th day of August, 2012, by Michael J. Brand, Member of the Bennington Place, LLC, a Kansas limited liability company, on behalf of the limited liability company.



Judith M. Terhune, Notary Public

My App't. Exp. 11-7-13

Entered on transfer record this _____ day of _____, 2012.

Kelly B. Arnold, County Clerk

We, the undersigned holders of a mortgage on the above described property, do hereby consent to this plat of "TIMBER RIDGE 5TH ADDITION", Wichita, Sedgwick County, Kansas.

INTRUST Bank, N.A.

State of Kansas) SS The foregoing instrument acknowledged before me, this _____ day of _____, 2012, by _____ of INTRUST Bank, N.A., on behalf of the bank.

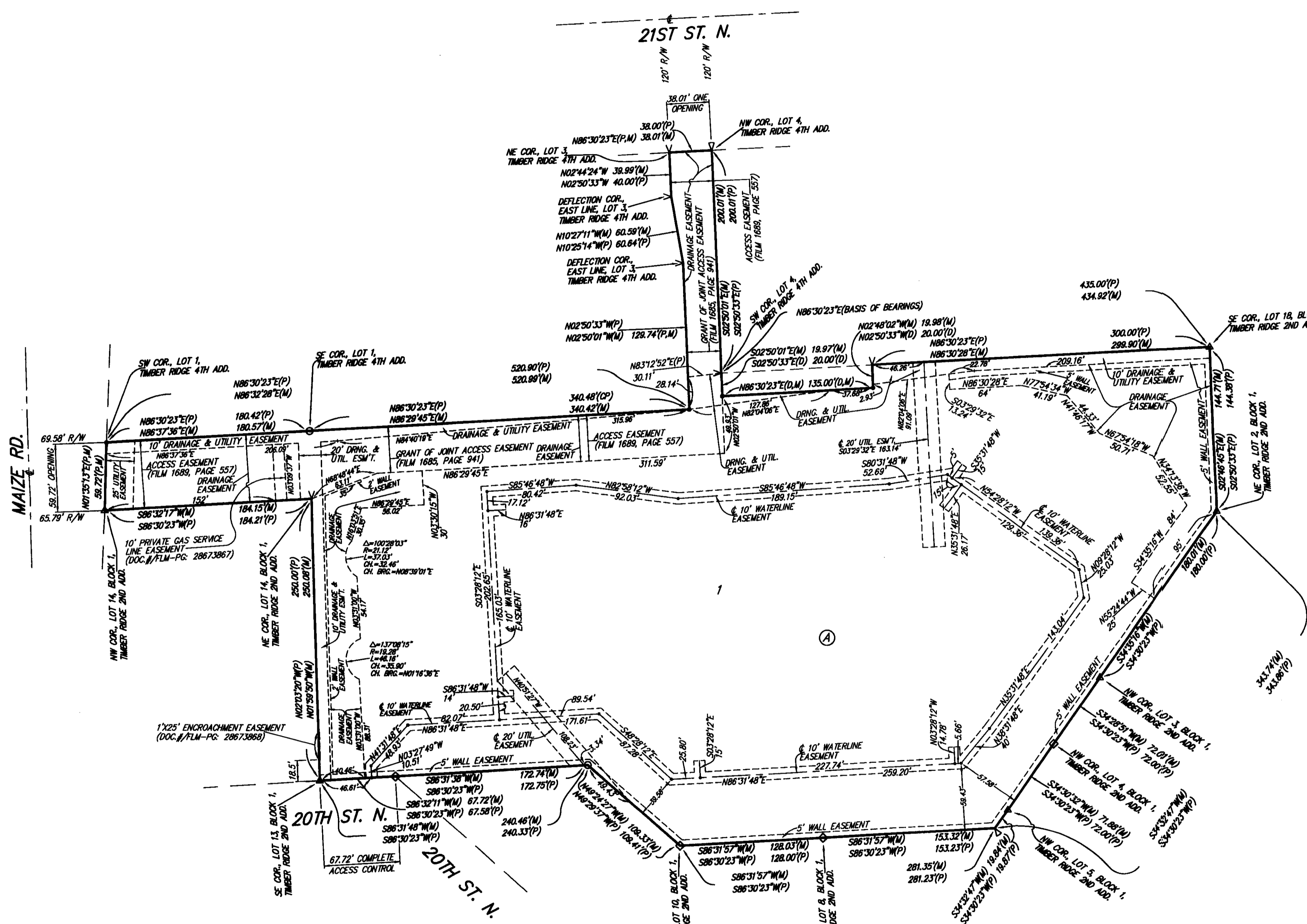
_____, Notary Public

My App't. Exp. _____

State of Kansas) SS This is to certify that this plat has been filed for record in the office of the Register of Deeds, this _____ day of _____, 2012 at _____ o'clock _____ M.; and is duly recorded.

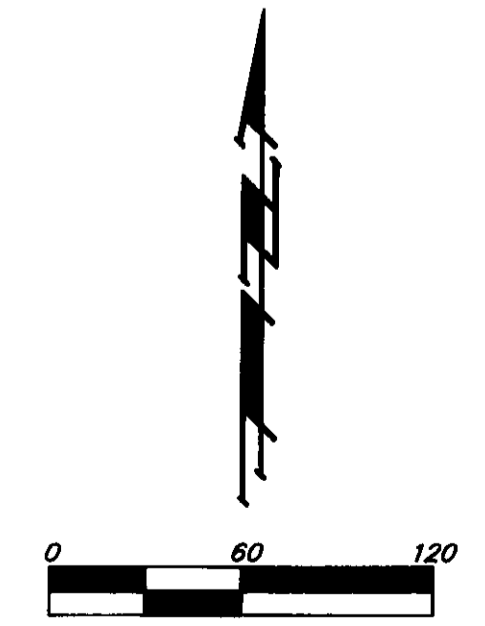
Bill Meek, Register of Deeds

Tonya Buckingham, Deputy



- = #4 REBAR W/ "BAUGHMAN" CAP (SET)
- △ = #4 REBAR W/ "BAUGHMAN" CAP (FOUND)
- = #4 REBAR (FOUND)
- = #4 REBAR W/ "SMB" CAP (FOUND)
- ∩ = "V" NOTCH (FOUND)
- ∩ = "V" NOTCH (SET)

- (M) = MEASURED
- (P) = PLATTED
- (D) = DESCRIBED
- (CP) = CALCULATED PER PLATTED INFO.



NOTE: A drainage plan has been developed for this subdivision and is on file with the City of Wichita, Kansas. Drainage intent shall remain as depicted or as modified with the approval of the City Engineer of the City of Wichita, Kansas. No obstructions which impede the flow of this drainage plan shall be allowed.

NOTE: ADDITIONAL BUILDING SETBACK REQUIREMENTS AND RESTRICTIONS PER COMMUNITY UNIT PLAN DP-197.