

CVS CENTRAL & OLIVER ADDITION

WICHITA, SEDGWICK COUNTY, KANSAS

This plat of "CVS CENTRAL & OLIVER ADDITION", Wichita, Sedgwick County, Kansas, has been submitted to and approved by the Wichita-Sedgwick County Metropolitan Area Planning Commission, Wichita, Kansas.

Dated this _____ day of _____, 2012.

Wichita-Sedgwick County Metropolitan Area Planning Commission

David Dennis Chair

John L. Schlegel Secretary

This plat approved and all dedications shown hereon, accepted by the City Council of the City of Wichita, Kansas, this _____ day of _____, 2012.

Carl Brewer Mayor

Karen Sublett City Clerk

Reviewed in accordance with K.S.A. 58-2005 on this _____ day of _____, 2012.

Tricia L. Robello, LS #1246 Deputy County Surveyor Sedgwick County Kansas

Entered on transfer record this _____ day of _____, 2012.

Kelly B. Arnold County Clerk

State of Kansas) SS
Sedgwick County)

This is to certify that this plat has been filed for record in the office of the Register of Deeds, this _____ day of _____, 2012, at o'clock _____ M. and is duly recorded.

Bill Meek Register of Deeds

Tanya Buckingham Deputy

State of Kansas) SS
Sedgwick County)

We, Savoy Company, P.A., Surveyors in aforesaid county and state do hereby certify that, under the supervision of the undersigned, we have surveyed and platted "CVS CENTRAL & OLIVER ADDITION" Wichita, Sedgwick County, Kansas and that the accompanying plat is a true and correct exhibit of the property surveyed, described as:

That part of Lots 28, 29, 30, 31, 32, 33, 34 and 35, Block 4, and part of Lots 26, 27, 28, 29 and 30, Block 14, and part of vacated Elm Street in East Highlands, Sedgwick County, Kansas, described as follows: Beginning at a point on the South line of the North 11.00 feet of Lot 35, in said Block 4, said point being 15.00 feet East of the West line of said Block 4; thence S89°11'59"E, 225.59 feet to a point 11.00 feet South of the North line of Lot 28, in said Block 4; thence S00°52'31"E, 156.97 feet to a point on the South line of Lot 26, in said Block 14; thence S89°12'09"W, along said South line 17.86 feet; thence S00°52'31"E, 133.53 feet to a point 6.50 feet North of the South line of Lot 30, in said Block 14; thence S89°11'59"W, parallel with and 6.50 feet North of the South line of said Block 14, 163.42 feet; thence N46°17'32"W, 62.03 feet to a point 15.00 feet East of the West line of Lot 29, in said Block 4; thence N00°54'21"W, parallel with and 15.00 feet East of the West line of said Block 4, 247.02 feet to the point of beginning.

All Public easements and dedications being vacated by virtue of K.S.A. 12-512b.

Date _____ Savoy Company, P.A.

Mark A. Savoy RLS #788 Surveyor

Know all men by these presents that We, the undersigned, have caused the land described in the surveyor's certificate to be platted into a Lot and a Block to be known as "CVS CENTRAL & OLIVER ADDITION" Wichita, Sedgwick County, Kansas. The utility easement is hereby granted for the construction and maintenance of all public utilities. A drainage plan has been developed for this plat and all drainage easements, rights-of-way, or reserves shall remain at established grades, or as modified with the approval of the City Engineer, and unobstructed to allow for the conveyance of stormwater. Access Control is hereby granted as shown on face of the Plat.

Central and Oliver Holdings LLC

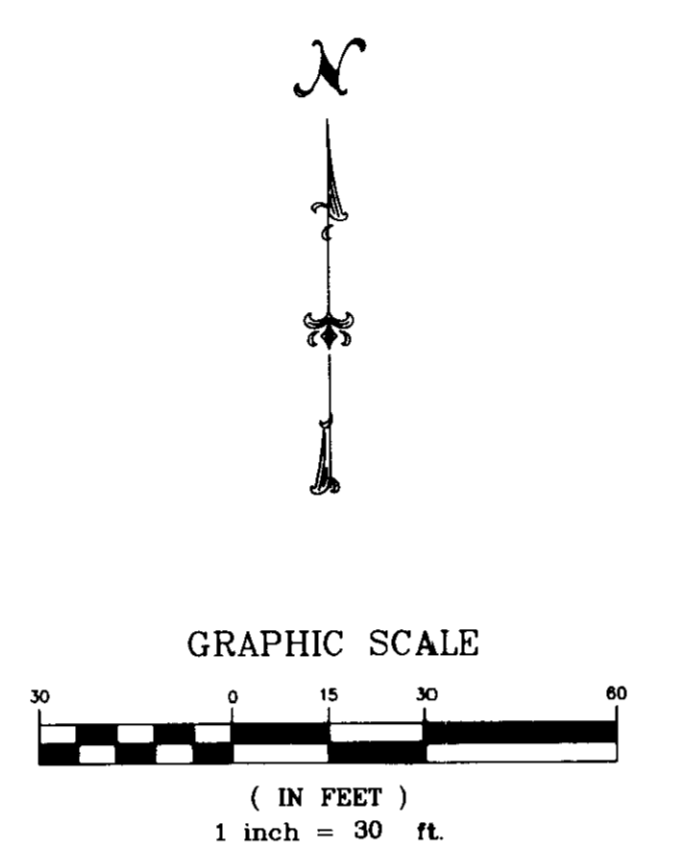
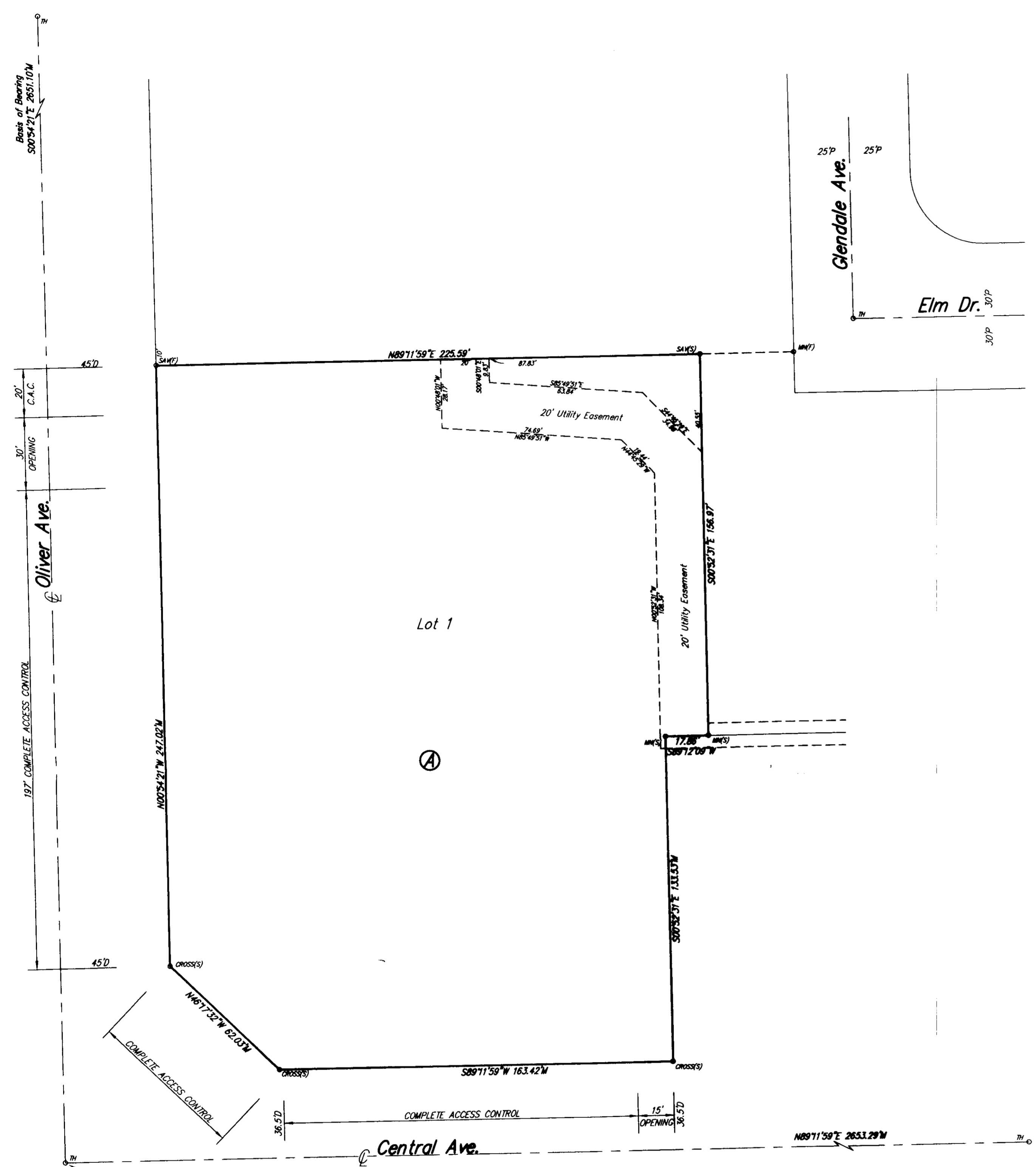
Member

State of Kansas) SS
Sedgwick County)

The foregoing instrument acknowledged before me, this _____ day of _____ 2012, by _____, a Member of Central and Oliver Holdings LLC, a Kansas limited liability company, on behalf of the company.

Notary Public

My App't. Exp. _____



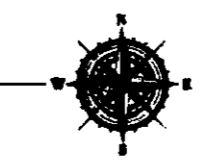
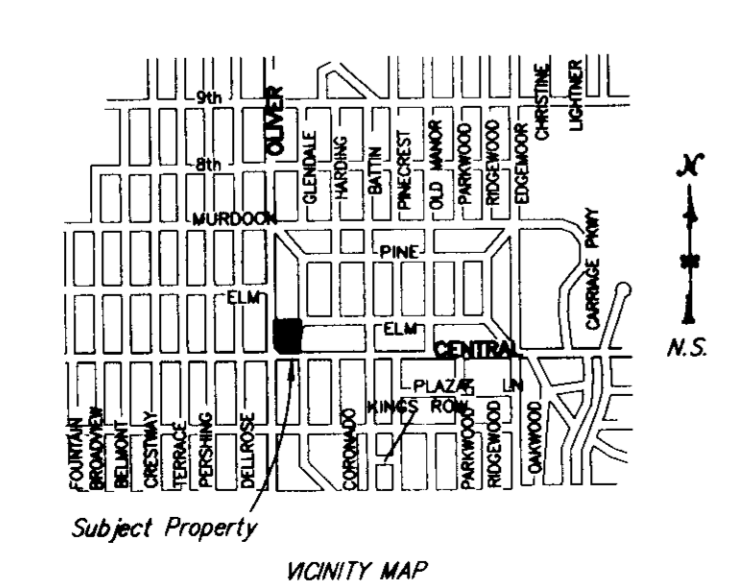
1767 MW PAD

SITE BENCHMARKS:
Benchmark #1
Square Cut Top Curb @ the N. End Curb
Return 84"N. of the Centerline of Central and 34"E. of the Centerline of Oliver
Elevation = 1366.02 (NAVD 88)

Benchmark #2
Square Cut Top Curb @ the S. End Curb
Return 35"W. of the Centerline of Glendale and 14"S. of the Centerline of Elm
Elevation = 1361.62 (NAVD 88)

- LEGEND:
- M = Measured
 - C = Calculated
 - D = Described
- 1/2" IP 1/2" IRON PIPE (FOUND)
 - 3/4" IP 3/4" IRON PIPE (FOUND)
 - TM CITY OF WICHITA CONTROL MONUMENT (FOUND)
 - MN(F) MAG NAIL (FOUND)
 - MN(S) MAG NAIL (SET)
 - IN CHISELED V-NOTCH (FOUND)
 - CROSS(F) CHISELED CROSS (FOUND)
 - CROSS(S) CHISELED CROSS (SET)
 - SAW(F) 1/2" REBAR W/SAVOY CAP (FOUND)
 - SAW(S) 1/2" REBAR W/SAVOY CAP (SET)

SW. Cor. SW1/4
Sec. 13, Twp. 27S, R-1-E



Savoy Company, P.A.
Land Surveyors
433 S. Hydraulic, Wichita, KS 67211-1911
PH (316) 265-0005
FAX (316) 265-0075
www.savoyco.com