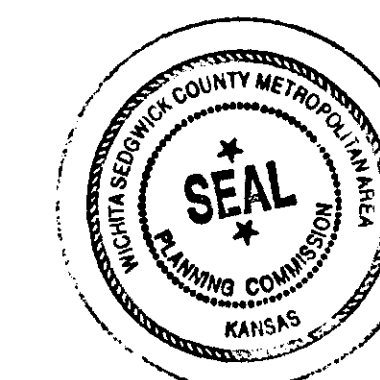


# NORTH FORTY ESTATES

## AN ADDITION TO SEDGWICK COUNTY, KANSAS

This plat of "NORTH FORTY ESTATES", an Addition to Sedgwick County, Kansas has been submitted to and approved by the Wichita-Sedgwick County Metropolitan Area Planning Commission, Wichita, Kansas.  
Dated this 6<sup>th</sup> day of DECEMBER, 2012.

Wichita-Sedgwick County Metropolitan Area Planning Commission



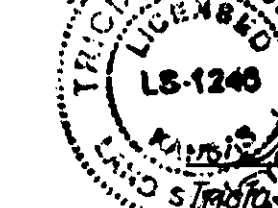
Chair  
David Dennis  
Secretary  
John L. Schlegel

This plat approved and all dedications shown hereon, are hereby accepted by the Board of County Commissioners, Sedgwick County, Kansas, this \_\_\_\_\_ day of \_\_\_\_\_, 2012.

Chairman  
Tim R. Norton, Second District

County Clerk  
Kelly B. Arnold

Reviewed in accordance with K.S.A. 58-2005 on this 17<sup>th</sup> day of December, 2012.



Deputy County Surveyor  
Sedgwick County, Kansas  
L. Robello, L.S. #1246

Entered on transfer record this \_\_\_\_\_ day of \_\_\_\_\_, 2012.

County Clerk  
Kelly B. Arnold

State of Kansas) SS  
Sedgwick County)

This is to certify that this plat has been filed for record in the office of the Register of Deeds, this \_\_\_\_\_ day of \_\_\_\_\_, 2012, at \_\_\_\_\_ o'clock \_\_\_\_\_ M. and is duly recorded.

Register of Deeds  
Bill Meek

Deputy  
Tonya Buckingham

State of Kansas) SS  
Sedgwick County)

We, Savoy Company, P.A., Surveyors in aforesaid county and state do hereby certify that, under the supervision of the undersigned, we have surveyed and platted "NORTH FORTY ESTATES", an Addition to Sedgwick County, Kansas and that the accompanying plat is a true and correct exhibit of the property surveyed, described as follows:

The North 855.00 feet of the East 282.00 feet of the North Half of the SE 1/4 of Sec. 4, Twp. 26-S, R-2-W of the 6th P.M., Sedgwick County, Kansas.

All Public easements and dedications being vacated by virtue of "K.S.A. 12-512b amended".

Savoy Company, P.A.

Date: 6 Dec 12  
Mark A. Savoy RLS #788 Surveyor

Know all men by these presents that we, the undersigned, have caused the land described in the surveyors certificate to be platted into Lots, A Block, a Reserve and a Street to be known as "NORTH FORTY ESTATES" an Addition to Sedgwick County, Kansas. The street is hereby dedicated to and for the use of the public. The utility and drainage easements are hereby granted as indicated for the construction and maintenance of all public utilities and for drainage purposes. Reserve "A" is hereby reserved for a Private Drive. The utility easement is hereby granted as indicated for the construction and maintenance of all public utilities. Reserve "A" shall be owned and maintained by the owners of Lot 1, Block A and Lot 2, Block A North Forty Estates, an Addition to Sedgwick County, Kansas. Lot 1, Block A and Lot 2, Block A shall have access to 167th Street West by way of Reserve "A". A drainage plan has been developed for this plat and all drainage easements and rights-of-way shall remain at established grades or modified with the approval of the Engineer of the appropriate governing body, and unobstructed to allow for the conveyance of stormwater. Access control is hereby granted as indicated on the face of the plat.

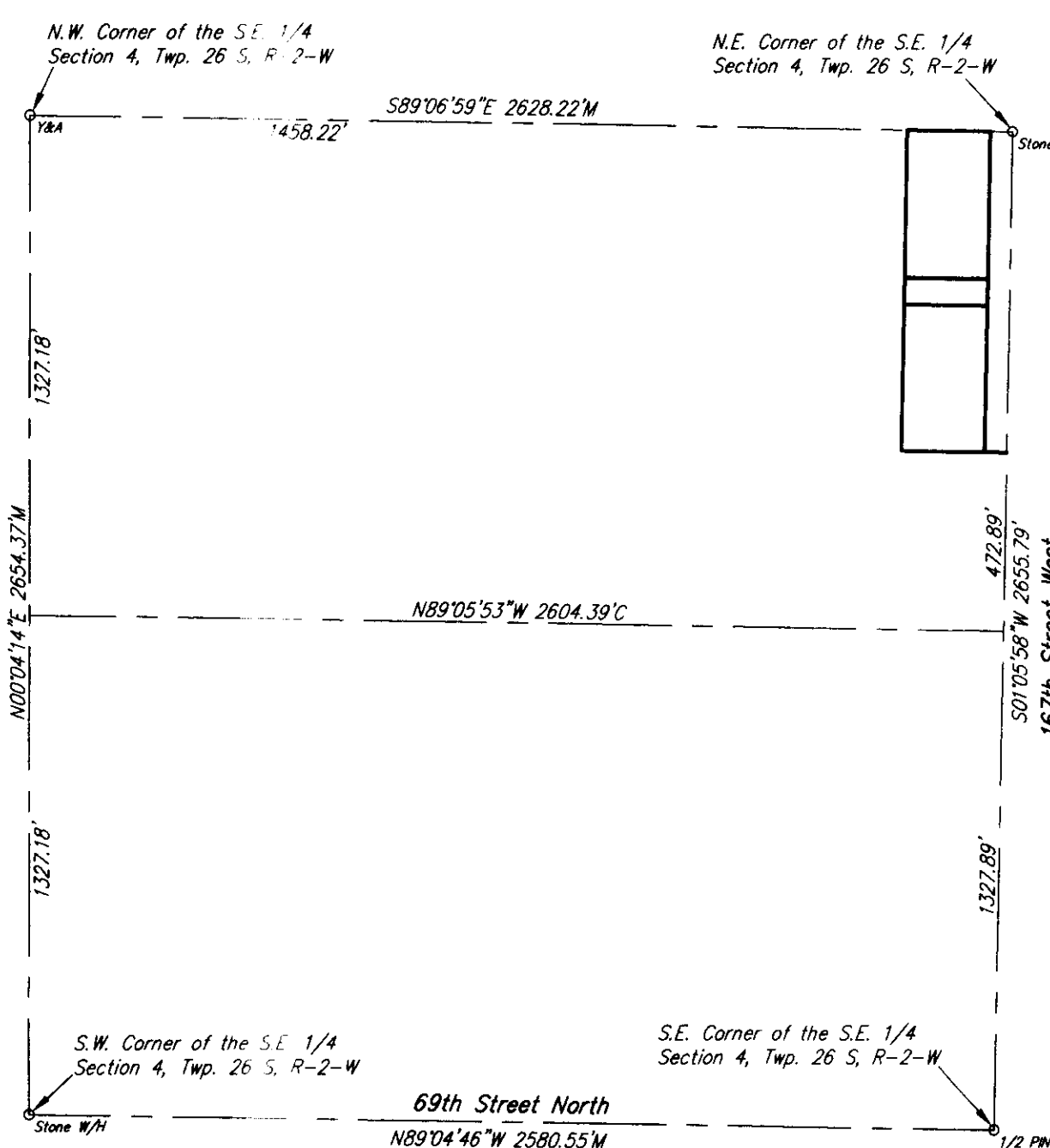
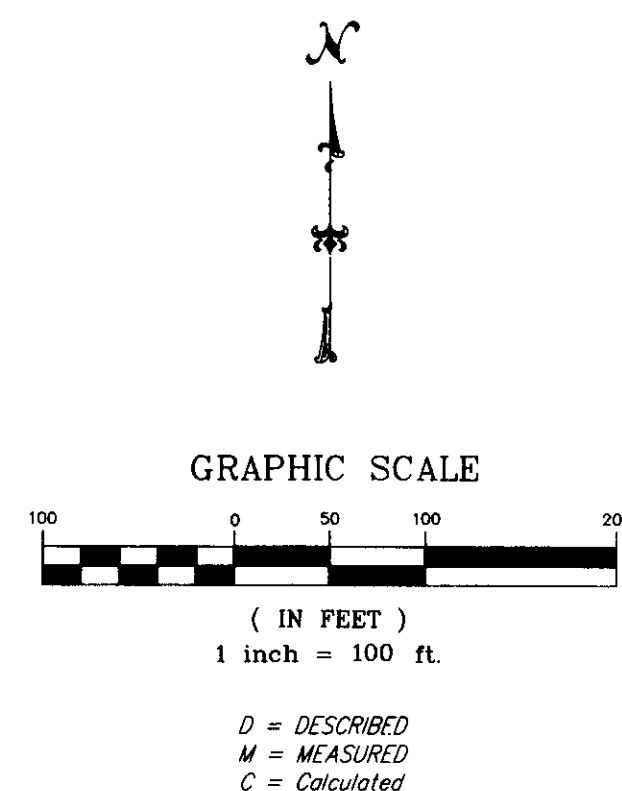
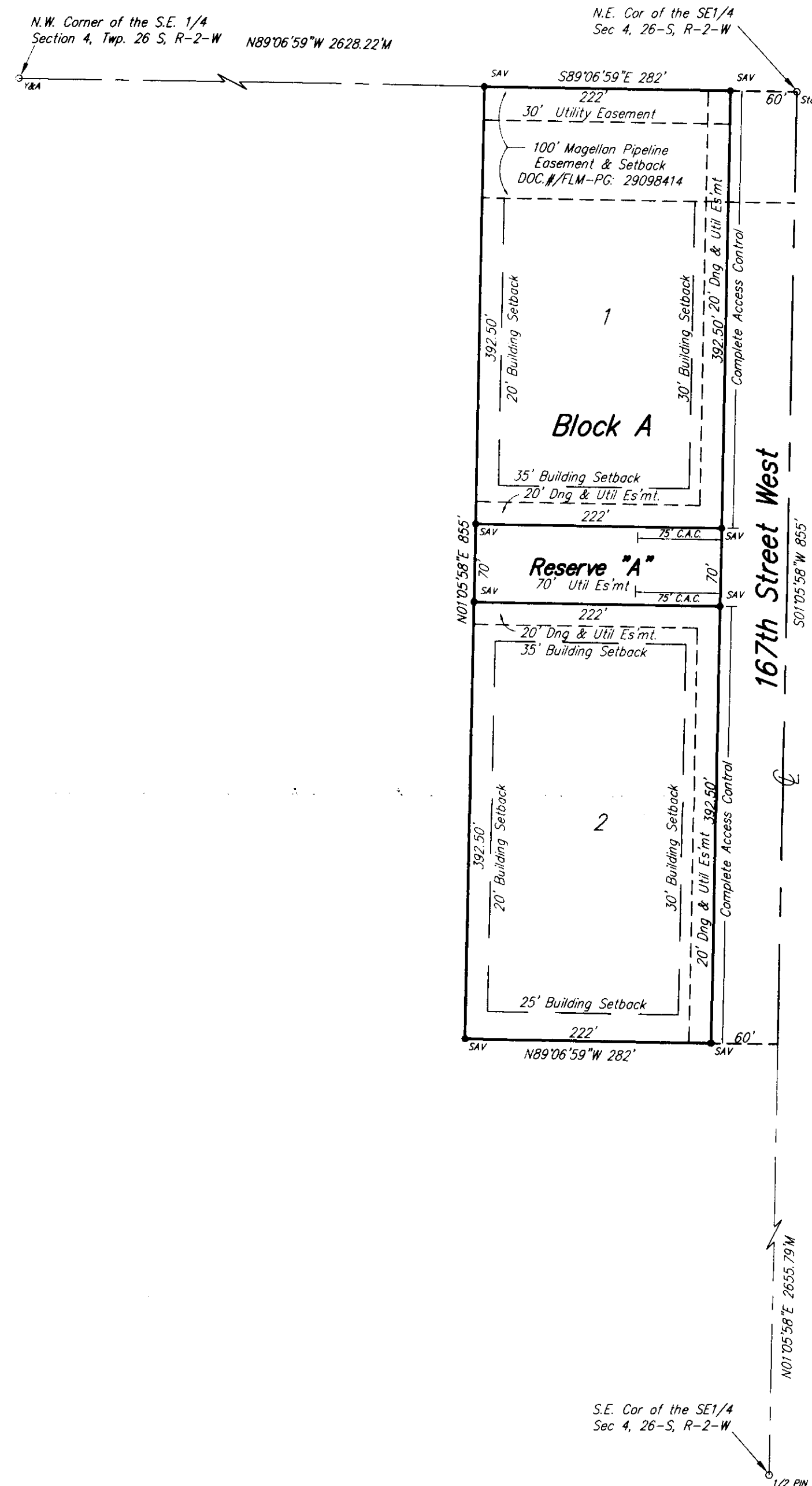
Timothy A. Stolz  
Timothy A. Stolz

Betty M. Stolz  
Betty M. Stolz

State of Kansas) SS  
Sedgwick County)

The foregoing instrument acknowledged before me, this 15<sup>th</sup> day of December, 2012, by Timothy A. Stolz and Betty M. Stolz, husband and wife.

My App't. Exp 10/30/15  
Linda S Hamby Notary Public



Savoy Company, P.A.  
Land Surveyors

433 S. Hydraulic, Wichita, KS 67211-1911  
www.savoyco.com