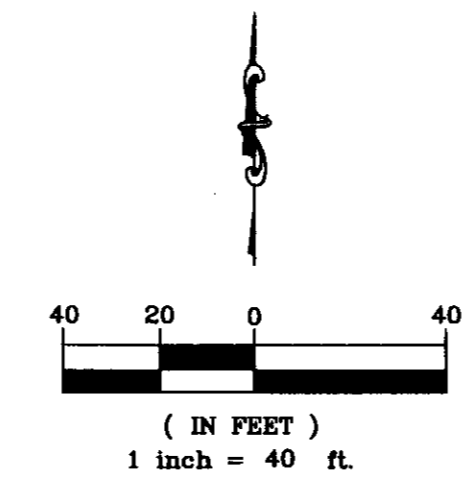
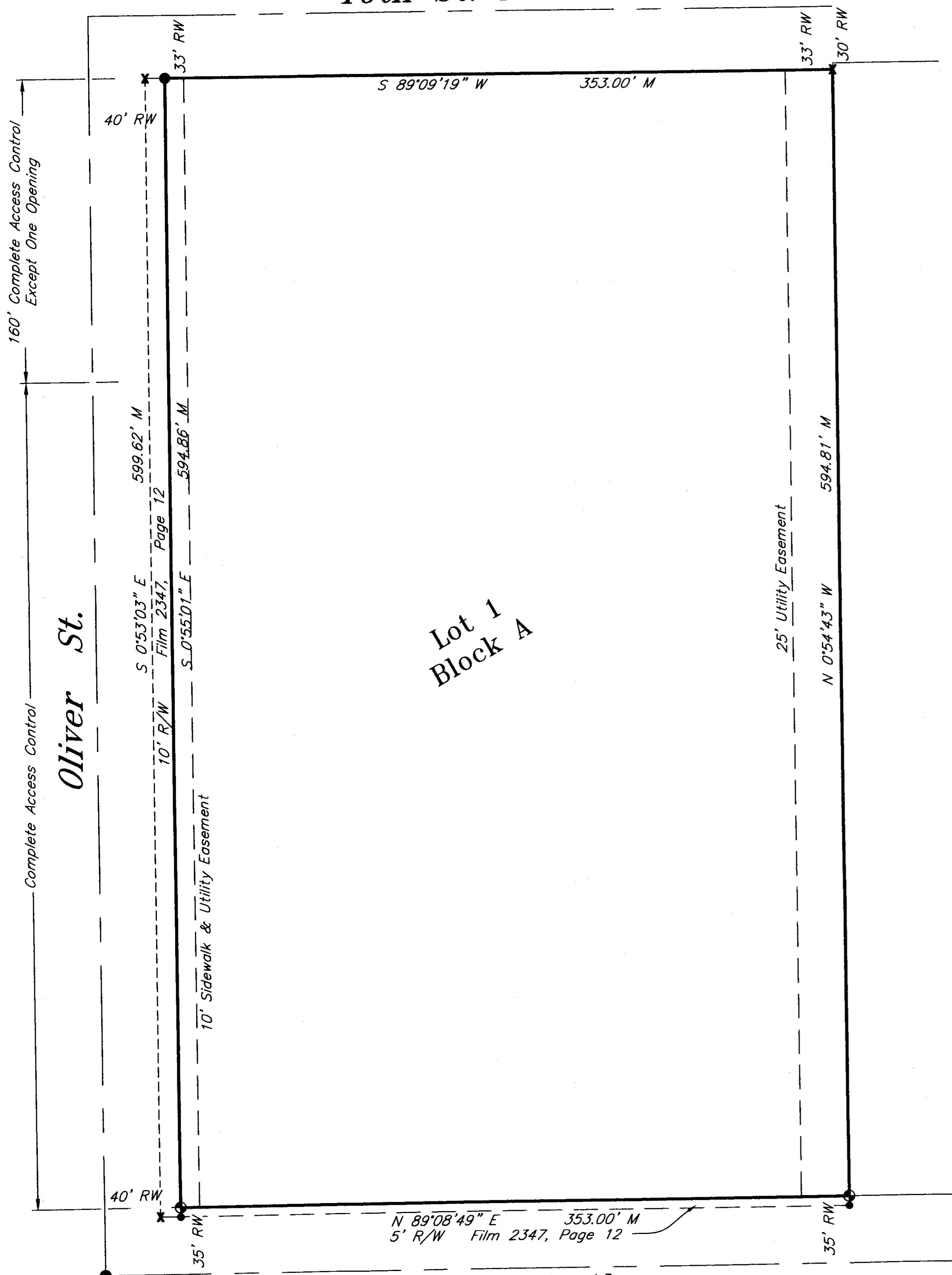


# Adams Elementary School Addition Wichita, Sedgwick County, Kansas

FILE COPY  
S4132012-25

Part of the NW 1/4, Section 13, Township 27 South, Range 1 East of the 6th. P.M.

10th St. North



**LEGEND:**

- 1/2" Rebar (found) Baughman
- x "X" Cut (found)
- 3/4" Iron Pipe
- ◆ 5/8" Rebar (set) KEMPA CLS #157
- M Measured

State of Kansas )  
County of Sedgwick ) SS

I, Bradley C. Ward, a licensed land surveyor of the State of Kansas, do hereby certify that the following described tract of land was surveyed on the 20th day of September, 2012 and the accompanying final plat prepared and that all the monuments shown herein actually exist and their positions are correctly shown to the best of my knowledge and belief:

**LEGAL DESCRIPTION**

Beginning 30 feet East of the Southwest Corner of the Northwest 1/4; thence East 363 feet; thence North 630 feet; thence West 363 feet, to a point 30 feet East of West Line of Northwest 1/4; thence South 630 feet, to Point of Beginning; Section 13, Township 27 South, Range 1 East, of the Sixth Principal Meridian, Sedgwick County, Kansas.

All easements and rights-of-way within said tract are hereby vacated by virtue of KSA 12-512b amended.

*Bradley C. Ward*  
 BRADLEY C. WARD  
 LAND SURVEYOR  
 #920

Bradley C. Ward, L.S. #920

State of Kansas )  
County of Sedgwick ) SS

Know all men by these presents, that we, the undersigned, have caused the land described in the surveyor's certificate to be platted into a Lot and Block, to be known as Adams Elementary School Addition, Wichita, Sedgwick County, Kansas. The streets are hereby dedicated to and for the use of the public as denoted on the plat. Any easements are hereby granted as indicated for constructing, maintaining, operating, and repairing public utilities. The access controls are hereby granted to the appropriate governing body as shown hereon. A drainage plan has been developed for the plat and shall remain at established grades or as modified with the approval of the applicable City or County Engineer, and unobstructed to allow for the conveyance of stormwater. And further that the land contained herein is held and shall be conveyed subject to any applicable restrictions, reservations and covenants now on file or hereafter filed in the Office of the Register of Deeds of Sedgwick County, Kansas.

By: *Lynn Rogers* 12/6/12  
 Lynn Rogers, President  
 Unified School District #259 Date

State of Kansas )  
County of Sedgwick ) SS

This instrument was acknowledged before me on this 6th day of December, 2012, by Lynn Rogers, President, Unified School District #259.

*Mike Willome*  
Notary Public

My Commission Expires: 6/30/15



State of Kansas )  
City of Wichita ) SS

This plat of Adams Elementary School Addition, Wichita, Sedgwick County, Kansas, has been submitted to and approved by the Wichita-Sedgwick County Metropolitan Area Planning Commission, Wichita, Kansas. Dated this \_\_\_\_\_ day of \_\_\_\_\_, 2012.  
Wichita-Sedgwick County Metropolitan Area Planning Commission.

David Dennis, Chair

John L. Schlegel, Secretary

State of Kansas )  
City of Wichita ) SS

This plat approved and all dedications shown hereon accepted by the City Council of the City of Wichita, Kansas, this \_\_\_\_\_ day of \_\_\_\_\_, 2012.

At the Direction of the City Council

Carl Brewer, Mayor

Karen Sublett, City Clerk

Entered on transfer record this \_\_\_\_\_ day of \_\_\_\_\_, 2012.

Kelly B. Arnold, County Clerk

State of Kansas )  
County of Sedgwick ) SS

This is to certify that this plat has been filed for record in the Office of the Register of Deeds this \_\_\_\_\_ day of \_\_\_\_\_, 2012, at \_\_\_\_\_ o'clock \_\_\_\_\_M; and is duly recorded.

Bill Meek, Register of Deeds

Tonya Buckingham, Deputy

Reviewed in accordance with K.S.A. 58-2005 on this \_\_\_\_\_ day of \_\_\_\_\_, 2012.

Tricia L. Robello, L.S. #1246  
Deputy County Surveyor  
Sedgwick County, Kansas

SW Cor NW 1/4  
Sec 13 T27S R1E

9th St. North

12/14/12

516 S. Market, Wichita, KS 67202 (316)264-0242