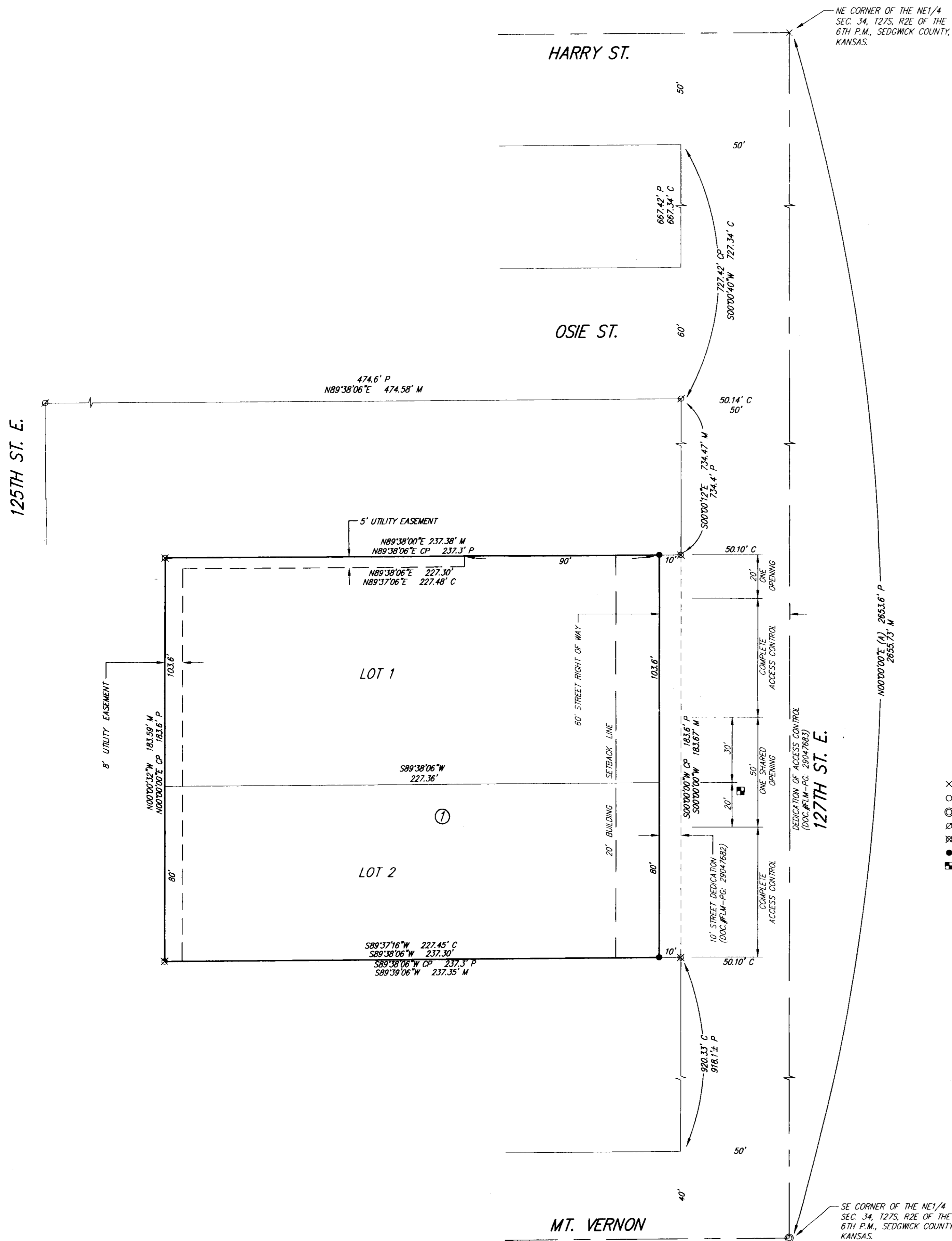


FINAL TRACING REC'D 3-28-13

sub2612-37

# JOHNSON ESTATES

an Addition to Wichita, Sedgwick County, Kansas



BENCHMARK: CHISELED SQUARE ON THE SOUTH END OF RCP, AT THE SOUTHERLY ENTRANCE TO 1807 S. 127TH ST. E. ELEVATION = 1341.28 (NAVD88)

- (A) = Assumed Basis of Bearing  
 P = Plotted (McEvoy Addition)  
 M = Measured  
 C = Calculated  
 D = Described  
 CP = Calculated from Plotted
- SURVEY MARKER LEGEND
- X ..... CHISELED CROSS (FOUND - ORIGIN UNKNOWN)
  - ..... 1/2" REBAR W/CAP (FOUND - ORIGIN UNKNOWN)
  - ⊙ ..... REBAR WITH SEDGWICK COUNTY DISC (FOUND)
  - ⊗ ..... 5/8" REBAR W/SRB CAP (FOUND)
  - ⊗ ..... 1/2" REBAR W/RUGGLES & BOHM CAP (FOUND)
  - ..... 1/2" REBAR W/RUGGLES & BOHM CAP (SET)
  - ..... BENCH MARK

State of Kansas)  
SS  
Sedgwick County)

We, Ruggles & Bohm, P.A., Land Surveyors in aforesaid county and state, do hereby certify that, under the supervision of the undersigned, we have surveyed and platted "JOHNSON ESTATES", an Addition to Wichita, Sedgwick County, Kansas, being a replat of part of Mc Evoy Addition, and that the accompanying plat is a true and correct exhibit of the property surveyed, described as follows:

Lot 5, Block D, except the east 10 feet thereof for street purposes, Mc Evoy Addition, Sedgwick County, Kansas.

All public easements and dedications are hereby vacated by virtue of K.S.A. 12-512b, as amended.

Ruggles & Bohm, P.A.  
 James D. Hestermann  
 Land Surveyor  
 2/14/2013

Know all men by these presents that we, the undersigned, have caused the land described in the surveyor's certificate to be platted into Lots and a Block, to be known as "JOHNSON ESTATES", an Addition to Wichita, Sedgwick County, Kansas. The utility easements are hereby granted for the construction and maintenance of all public utilities. A drainage plan has been developed for this plat and all drainage easements, rights-of-way, or reserves shall remain at established grades, or as modified with the approval of the City Engineer, and unobstructed to allow for the conveyance of stormwater. Access Controls have been granted by separate instrument, recorded as DOC.#FLM-PG: 29047683.

Jay and Bonnie Johnson Living Trust dated May 27, 2010

Jay W. Johnson, Trustee  
 Bonnie A. Johnson, Trustee

State of Kansas)  
SS  
Sedgwick County)

The foregoing instrument acknowledged before me, this 8<sup>TH</sup> day of FEBRUARY, 2013, by Jay W. Johnson and Bonnie A. Johnson, Trustees of the Jay and Bonnie Johnson Living Trust dated May 27, 2010.

William K. Clevenger, Notary Public  
 My appointment expires 11/15/16

We the undersigned, holders of a mortgage on a portion of the above described property, do hereby consent to this plat of "JOHNSON ESTATES", an Addition to Wichita, Sedgwick County, Kansas.

Bank of the West  
 Tera L. Schaecher, Senior Vice President



Nebraska  
State of Kansas)  
Douglas SS  
Sedgwick County)

The foregoing instrument acknowledged before me this 22<sup>ND</sup> day of March, 2013, by Tera L. Schaecher, Senior Vice President of Bank of the West, on behalf of the Bank.

Scott A. Schmidt, Notary Public  
 My appointment expires 2/12/2016

This plat of "JOHNSON ESTATES", an Addition to Wichita, Sedgwick County, Kansas, has been submitted to and approved by the Wichita-Sedgwick County Metropolitan Area Planning Commission, Wichita, Kansas.

Dated this \_\_\_ day of \_\_\_, 2013.  
 Wichita-Sedgwick County Metropolitan Area Planning Commission  
 David Dennis, Chair  
 John L. Schlegel, Secretary

This plat approved and all dedications shown hereon accepted by the City Council of the City of Wichita, Kansas, this \_\_\_ day of \_\_\_, 2013.

At the Direction of the City Council  
 Carl Brewer, Mayor  
 Karen Sublett, City Clerk

Reviewed in accordance with K.S.A. 58-2005 on this \_\_\_ day of \_\_\_, 2013.

Deputy County Surveyor  
 Tricia L. Robello, LS #1246

Entered on transfer record this \_\_\_ day of \_\_\_, 2013.  
 Kelly B. Arnold, County Clerk

State of Kansas)  
SS  
Sedgwick County)

This is to certify that this plat has been filed for record in the office of the Register of Deeds, this \_\_\_ day of \_\_\_, 2013, at \_\_\_ o'clock \_\_\_ M, and is duly recorded.

Register of Deeds  
 Bill Meek  
 Deputy  
 Tonya Buckingham

