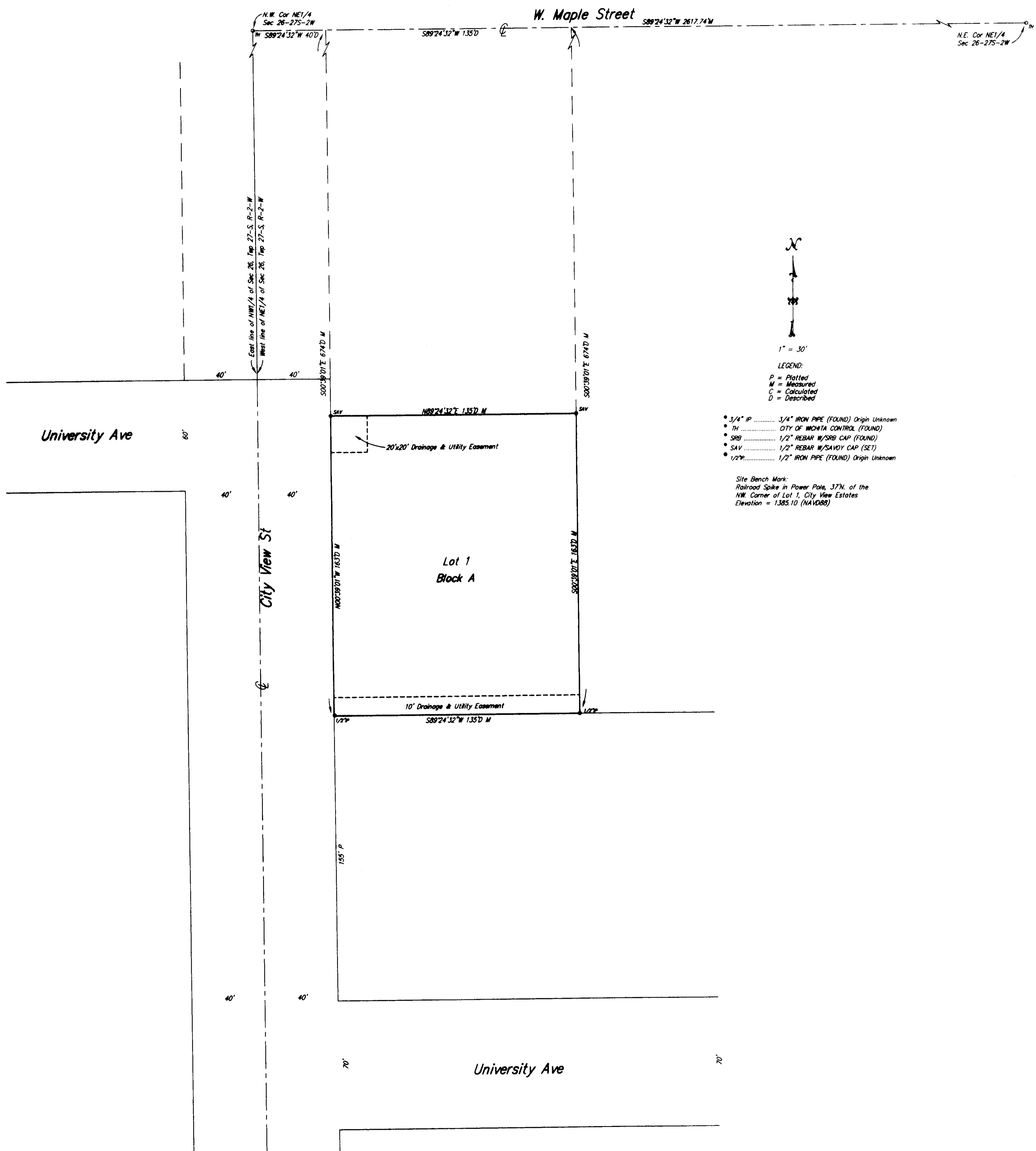


**CITY VIEW ESTATES**  
WICHITA, SEDGWICK COUNTY, KANSAS



State of Kansas) SS  
Sedgwick County)

We, Savoy Company, P.A., Surveyors in aforesaid county and state do hereby certify that, under the supervision of the undersigned, we have surveyed and platted "CITY VIEW ESTATES", Wichita, Sedgwick County, Kansas and that the accompanying plat is a true and correct exhibit of the property surveyed, described as follows:

The South 163 feet of that part of the NE1/4 of Sec. 26, Twp. 27-S, R-2-W of the 6th P.M., Sedgwick County, Kansas, described as beginning at a point 40 feet East of the N.W. Corner of said NE1/4; thence East, along the North line of said NE1/4, 135 feet; thence South, parallel with the West line of said NE1/4, 674 feet; thence West, parallel with the North line of said NE1/4, 135 feet to a point 40 feet East of the West line of said NE1/4; thence North, parallel with the West line of said NE1/4, 674 feet to the point of beginning.

All Public easements and dedications being vacated by virtue of K.S.A. 12-512b, as amended.

Savoy Company, P.A.

Date 12 April 2013  
*Mark A. Savoy* RLS #1788  
Surveyor

This plat of "CITY VIEW ESTATES", an Addition to Sedgwick County, Kansas has been submitted to and approved by the Wichita-Sedgwick County Metropolitan Area Planning Commission, Wichita, Sedgwick County, Kansas.  
Dated this \_\_\_\_\_ day of \_\_\_\_\_, 2013.

Wichita-Sedgwick County Metropolitan Area Planning Commission

\_\_\_\_\_  
David Dennis Chair  
\_\_\_\_\_  
John L. Schlegel Secretary

This plat approved and all dedications shown hereon, accepted by the City Council of the City of Wichita, Kansas, this \_\_\_\_\_ day of \_\_\_\_\_, 2013.

\_\_\_\_\_  
Carl Brewer Mayor  
\_\_\_\_\_  
Karen Sublett City Clerk

Know all men by these presents that We, the undersigned, have caused the land described in the surveyor's certificate to be platted into a Lot and a Block to be known as "CITY VIEW ESTATES" Wichita, Sedgwick County, Kansas. The drainage and utility easement is hereby granted for drainage purposes and for the construction and maintenance of all public utilities. A drainage plan has been developed for this plat and all drainage easements, rights-of-way, or reserves shall remain at established grades, or as modified with the approval of the City Engineer, and unobstructed to allow for the conveyance of stormwater.

*Franklin W. Couch*  
Franklin W. Couch  
*Theresa L. Couch*  
Theresa L. Couch

Reviewed in accordance with K.S.A. 58-2005 on this \_\_\_\_\_ day of \_\_\_\_\_, 2013.

\_\_\_\_\_  
Deputy County Surveyor  
Sedgwick County Kansas  
Tricia L. Robello, LS #1246

Entered on transfer record this \_\_\_\_\_ day of \_\_\_\_\_, 2013.

\_\_\_\_\_  
County Clerk  
Kelly B. Arnold

State of Kansas) SS  
Sedgwick County)

The foregoing instrument acknowledged before me, this 12<sup>th</sup> day of April, 2013, by Franklin W. Couch and Theresa L. Couch, husband and wife.

*Linda S. Hamby*  
Linda S. Hamby Notary Public  
My App't. Exp. 10/30/15  
LINDA S. HAMBY  
NOTARY PUBLIC  
STATE OF KANSAS

State of Kansas) SS  
Sedgwick County)

This is to certify that this plat has been filed for record in the office of the Register of Deeds, this \_\_\_\_\_ day of \_\_\_\_\_, 2013, at \_\_\_\_\_ o'clock \_\_\_\_\_ M. and is duly recorded.

\_\_\_\_\_  
Register of Deeds  
Bill Meek  
\_\_\_\_\_  
Deputy  
Tonya Buckingham

